

Converting Colors

XYZ(54.9479, 52.8117, 55.5383)

Have a look what the booklet for
XYZ(54.9479, 52.8117, 55.5383)
contains.

XYZ(54.9411, 52.7068, 55.4218)	3
<i>Conversions</i>	4
<i>Details</i>	6
<i>Harmonies</i>	12
<i>Previews</i>	24
<i>Color Blindness Simulation</i>	28
<i>CSS Examples</i>	31

Color

**XYZ(54.9411, 52.7068,
55.4218)**

Conversions

Conversions Part 1

Format	Color
Hex	D9B8BD
RGB	217, 184, 189
RGB Percent	85%, 72%, 74%
CMY	0.1490, 0.2784, 0.2588
CMYK	0.00, 0.15, 0.13, 0.15
HSL	351°, 30%, 79%
HSV	351°, 15%, 85%
XYZ	54.9411, 52.7068, 55.4218
YIQ	194.4370, 18.0630, 8.5510

Conversions

Conversions Part 2

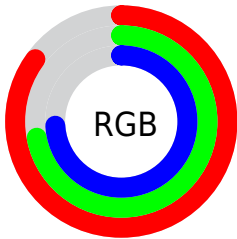
Format	Color
R _Y B	217, 184, 189
Decimal	14268605
CIE Lab	77.70, 12.62, 1.87
CIE LCh	78, 12.759, 8.415
Yxy	52.7068, 0.3369, 0.3232
Android (android.graphics.Color)	4292458685 (0xFFD9B8BD)
YUV	194.4370, -2.6804, 19.7878
Hunter-Lab	72.5994, 8.0344, 5.5581

Details

The XYZ color **54.9411, 52.7068, 55.4218** is a light color, and the websafe version is hex **FFCCCC**. A complement of this color would be **56.4658, 64.5709, 71.7780**, and the grayscale version is **51.5462, 54.2306, 59.0571**.

A 20% lighter version of the original color is **88.8815, 90.1727, 99.1067**, and **27.4605, 25.6916, 26.8042** is the 20% darker color. If you saturate the color by 10%, you get **48.9011, 43.6247, 44.1650**, and if you desaturate by 10%, it is **61.9294, 63.2780, 68.2481**.

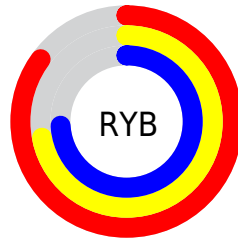
Distribution



Red (85%)

Green (72%)

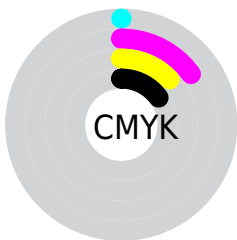
Blue (74%)



Red (85%)

Yellow (72%)

Blue (74%)

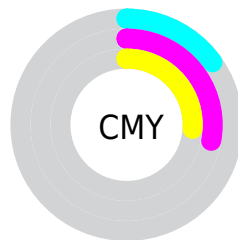


Cyan (0%)

Magenta (15%)

Yellow (13%)

Black (15%)



Cyan (15%)


Magenta (28%)


Yellow (26%)

Brightness & Saturation Gradients


These gradients show how the XYZ color 54.9411, 52.7068, 55.4218 changes by changing the brightness by 10 percent. The first figure shows a shift by +10% for each color and the second figure -10%.


Similar to the brightness gradients but the following saturation gradients show a change of the XYZ color 54.9411, 52.7068, 55.4218 by changing the saturation by 10% instead.


 54.9411, 52.7068,
55.4218

 54.9411, 52.7068,
55.4218


395.8287,
397.1592, 424.8358

 39.5882, 37.5688,
39.3387

 96.6035, 94.1728,
99.6360

 27.4004, 25.6482,
26.7134

123.6437,
121.2695, 128.6042

 18.0123, 16.5606,
17.1276


155.3104,
153.1213, 162.7044

 11.0586, 9.9217,
10.1626

191.9689,
190.1125, 202.3553

 6.1738, 5.3471,
5.3999

233.9847,
232.6274, 247.9753

 2.9927, 2.4523,
2.4209

281.7230,

 1.1499, 0.8526,

281.0506, 299.9830

0.7978

335.5492,
335.7664, 358.7970

■ 0.0663, 0.0000,
0.0000

■ 0.0000, 0.0000,
0.0000

■ 54.9411, 52.7068,
55.4218

■ 54.9411, 52.7068,
55.4218

■ 48.9011, 43.6247,
44.1650

■ 61.9294, 63.2780,
68.2481

■ 43.7639, 35.9580,
34.4139

■ 69.8998, 75.3937,
82.6975

■ 39.4873, 29.6374,
26.1053

■ 78.8901, 89.1149,
98.8255

■ 36.0236, 24.5849,
19.1703

■ 82.4256, 93.4919,
108.3092

■ 33.3204, 20.7145,
13.5341

■ 31.3194, 17.9295,
9.1150

■ 29.9532, 16.1178,
5.8213

■ 29.1409, 15.1427,
3.5481

■ 28.8881, 14.8609,
2.7743

Harmonies

Analogous

The Analogous color harmony consists of three colors that are next to each other on the color wheel.



54.6419, 52.7068, 62.5375



54.9411, 52.7068, 55.4218



53.9090, 52.7068, 49.3480

Triad

The Triadic color harmony groups three colors that are evenly spaced from another and form a triangle on the color wheel.



54.9411, 52.7068, 55.4218



47.2038, 52.7068, 47.3807



48.3699, 52.7068, 70.9835

Complementary

The Complementary color scheme is a pair of colors which are on the opposite of each other on the color wheel.



54.9411, 52.7068, 55.4218



56.4658, 64.5709, 71.7780

Split Complementary

Split-complementary colors differ from the complementary color scheme. The scheme consists of three colors, the original color and two neighbors of the complement color.



46.4676, 52.7068, 66.2587



54.9411, 52.7068, 55.4218



45.8099, 52.7068, 52.5306

Square

The Square scheme is like the rectangle color scheme, but the four colors are evenly spaced on the color wheel.



54.9411, 52.7068, 55.4218



49.4046, 52.7068, 44.9616



45.5449, 52.7068, 59.4017



50.7942, 52.7068, 71.9176

Rectangle

The Rectangle color scheme consists of four colors that form a rectangle on the color wheel.



54.9411, 52.7068, 55.4218



52.6243, 52.7068, 46.5677



45.5449, 52.7068, 59.4017



47.6505, 52.7068, 69.7683

Sweetspot

The Sweet Spot groups the original color and five complimentary colors.



54.9426, 52.7092, 55.4229



89.4232, 91.4558, 98.6714



56.6740, 53.2160, 72.9310



18.9772, 19.3281, 20.8223



0.0000, 0.0000, 0.0000



20.3446, 21.4041, 23.3091

Same Dimension

The Same Dimension uses a secret algorithm to generate beautiful new colors.



54.9426, 52.7092, 55.4229



76.4661, 71.8705, 74.8418



56.7838, 57.2447, 53.4067



13.1360, 13.0835, 13.9774



17.5115, 9.0056, 1.8076



1.1603, 0.5938, 0.2530

Inverse Universe

The Inverse Universe completely reimagines the original color for something new.



54.9426, 52.7092, 55.4229



76.4661, 71.8705, 74.8418



54.3648, 59.3446, 74.2357



13.1360, 13.0835, 13.9774



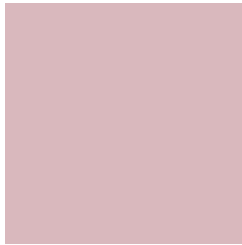
17.5115, 9.0056, 1.8076



1.1603, 0.5938, 0.2530

Previews

White Background



This preview shows how the XYZ color 54.9411, 52.7068, 55.4218 looks on a white background.

Color Contrast Check

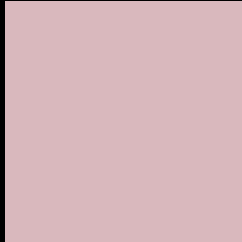
Large Text (above 18pt) WCAG AA × Fail

Any Text WCAG AA × Fail

Large Text (above 18pt) WCAG AAA × Fail

Any Text WCAG AAA × Fail

Black Background



This preview shows how the XYZ color 54.9411, 52.7068, 55.4218 looks on a black background.

Color Contrast Check

Large Text (above 18pt) WCAG AA ✓ Pass

Any Text WCAG AA ✓ Pass

Large Text (above 18pt) WCAG AAA ✓ Pass

Any Text WCAG AAA ✓ Pass

If you want to check with other color combinations, try the [Color Contrast Checker](#).

XYZ 54.9411, 52.7068, 55.4218

Background



This preview shows how black text looks on a background with the XYZ color 54.9411, 52.7068, 55.4218.



This preview shows how white text looks on a background with the XYZ color 54.9411, 52.7068,

55.4218.

Color Blindness Simulation

Color vision deficiency is a very complex topic, and I could not describe the different causes any better than Wikipedia does, so if you want to learn more, you should check out their [article about color blindness](#).

Dichromacy



Original Color

54.9411, 52.7068, 55.4218

Protanopia

50.7621, 52.7140, 57.9514

Deuteranopia

53.8956, 52.7890, 55.4928



Tritanopia

55.9250, 52.8036, 60.0679

Trichromacy



Original Color

54.9411, 52.7068, 55.4218

Protanomaly

52.1262, 52.4687, 57.2493

Deuteranomaly

54.2658, 52.6682, 55.4500

Tritanomaly

55.5845, 52.6674, 58.2751

Monochromacy



Original Color

54.9411, 52.7068, 55.4218

Achromatopsia

51.2775, 53.9479, 58.7493

Achromatomaly

52.2850, 53.1892, 57.3800

CSS Examples

Text

The CSS property to change the color of the text to XYZ 54.9411, 52.7068, 55.4218 is called "color". The color property can be set on classes, ids or directly on the HTML element.

This example shows how text in the color `rgb(217, 184, 189)` looks like.

```
.text, #text, p{  
    color:rgb(217, 184, 189)  
}
```

If you want to add a text shadow in that color use the text-shadow property, you can generate a text shadow directly with our [CSS Text Shadow Generator](#).

Here you see how black text with a 4 pixel rgb(217, 184, 189) colored shadow looks like.

```
.shadow{ text-shadow: 4px 4px 2px rgb(217, 184, 189) }
```

Border

The CSS property to change the border of an element to XYZ 54.9411, 52.7068, 55.4218 is called "border". The border property can be set on classes, ids or directly on the HTML element.

This example shows the color as border, it can be applied via the CSS property "border" or "border-color".

```
.border, #border, table{ border:4px solid rgb(217, 184, 189) }
```


If only the border color should be changed use the property `border-color`.

```
.border{ border-color:rgb(217, 184, 189) }
```

If you want to add a box shadow in that color use:

Here you see how a box with a 4 pixel `rgb(217, 184, 189)` colored shadow looks like.

```
.boxshadow{ -moz-box-shadow:4px 4px 4px  
4px rgb(217, 184, 189); -webkit-box-  
shadow:4px 4px 4px 4px rgb(217, 184, 189);  
box-shadow:4px 4px 4px 4px rgb(217, 184,  
189) }
```

Background

The CSS property to change the background color of an element to XYZ 54.9411, 52.7068, 55.4218 is called "background". The background property can be set on classes, ids or directly on the HTML element.

```
.background, #background, body{  
background: rgb(217, 184, 189) }
```

If only the background color should be changed can be used:

```
.background{ background-color: rgb(217,  
184, 189) }
```

This example shows the color as background, it is applied via the CSS property "background".

To optimize and compress your CSS code, you can use our [online CSS compressor and optimizer](#) based on csstidy. If you want to create a linear or radial gradient as background or border, check our [CSS Gradient Generator](#).

Hey! You found this booklet interesting? Support Converting Colors with the new Membership Option!

The pro membership hides all ads, plus gives you double the colors in the color bucket, and more awesome pro features!

[Learn more, Memberships starting at \\$2.50/m!](#)

**Follow me
on Twitter!**

@ConvertingColor