

Converting Colors

XYZ(54.9531, 54.8273, 50.8471)

Have a look what the booklet for
XYZ(54.9531, 54.8273, 50.8471)
contains.

XYZ(54.9706, 54.7211, 50.8450)	3
<i>Conversions</i>	4
<i>Details</i>	6
<i>Harmonies</i>	12
<i>Previews</i>	24
<i>Color Blindness Simulation</i>	28
<i>CSS Examples</i>	31

Color

**XYZ(54.9706, 54.7211,
50.8450)**

Conversions

Conversions Part 1

Format	Color
Hex	D8BEB4
RGB	216, 190, 180
RGB Percent	85%, 75%, 71%
CMY	0.1529, 0.2549, 0.2941
CMYK	0.00, 0.12, 0.17, 0.15
HSL	17°, 32%, 78%
HSV	17°, 17%, 85%
XYZ	54.9706, 54.7211, 50.8450
YIQ	196.6340, 18.7060, 2.4020

Conversions

Conversions Part 2

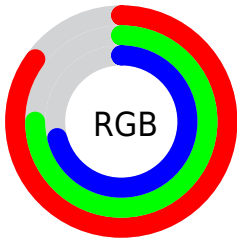
Format	Color
RYB	216, 194, 180
Decimal	14204596
CIELab	78.88, 7.62, 8.42
CIELCh	79, 11.354, 47.881
Yxy	54.7211, 0.3424, 0.3409
Android (android.graphics.Color)	4292394676 (0xFFD8BEB4)
YUV	196.6340, -8.2006, 16.9840
Hunter-Lab	73.9737, 3.1911, 11.0293

Details

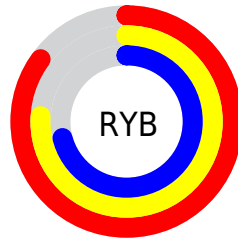
The XYZ color **54.9706, 54.7211, 50.8450** is a light color, and the websafe version is hex **CCCCCC**. A complement of this color would be **53.2881, 58.8026, 73.5078**, and the grayscale version is **52.8914, 55.6459, 60.5984**.

A 20% lighter version of the original color is **89.3361, 93.2277, 92.6431**, and **27.4744, 27.0007, 23.8423** is the 20% darker color. If you saturate the color by 10%, you get **49.7402, 47.5113, 39.0782**, and if you desaturate by 10%, it is **60.9085, 62.7961, 64.5407**.

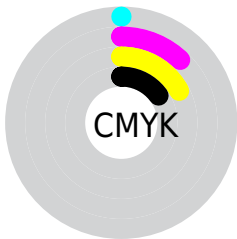
Distribution



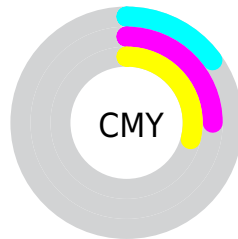
- Red (85%)
- Green (75%)
- Blue (71%)



- Red (85%)
- Yellow (76%)
- Blue (71%)



- Cyan (0%)
- Magenta (12%)
- Yellow (17%)
- Black (15%)





- Cyan (15%)
- Magenta (25%)
- Yellow (29%)

Brightness & Saturation Gradients


These gradients show how the XYZ color 54.9706, 54.7211, 50.8450 changes by changing the brightness by 10 percent. The first figure shows a shift by +10% for each color and the second figure -10%.

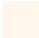
Similar to the brightness gradients but the following saturation gradients show a change of the XYZ color 54.9706, 54.7211, 50.8450 by changing the saturation by 10% instead.


 54.9706, 54.7211,
50.8450

 54.9706, 54.7211,
50.8450


395.9387,
404.8538, 406.7906

 39.6119, 39.1785,
35.7094


 96.6465, 97.1322,
92.8348

 27.4190, 26.8986,
23.9219


123.6943,
124.7695, 120.5260

 18.0263, 17.4971,
15.0641


155.3694,
157.2071, 153.2396

 11.0687, 10.5895,
8.7172

192.0369,
194.8294, 191.3939

 6.1807, 5.7915,
4.4629

234.0622,
238.0208, 235.4077

 2.9970, 2.7187,
1.8826

281.8107,

 1.1522, 0.9867,

287.1658, 285.6994

0.4816

335.6477,
342.6487, 342.6875

■ 0.0681, 0.0000,
0.0000

■ 0.0000, 0.0000,
0.0000

■ 54.9706, 54.7211,
50.8450

■ 54.9706, 54.7211,
50.8450

■ 49.7402, 47.5113,
39.0782

■ 60.9085, 62.7961,
64.5407

■ 45.1857, 41.1304,
29.1497

■ 67.5751, 71.7566,
80.2435

■ 41.2796, 35.5501,
20.9666

■ 74.9962, 81.6312,
98.0312

■ 37.9906, 30.7380,
14.4268

■ 81.3041, 91.6889,
108.0203

■ 35.2849, 26.6589,
9.4170

■ 82.1292, 93.3391,
108.2953

■ 33.1247, 23.2752,
5.8099

■ 31.4676, 20.5451,
3.4566

■ 30.2617, 18.4211,
2.1674

■ 29.9362, 17.8332,
1.8643

Harmonies

Analogous

The Analogous color harmony consists of three colors that are next to each other on the color wheel.



56.2435, 54.7211, 55.8533



54.9706, 54.7211, 50.8450



52.9256, 54.7211, 48.2564

Triad

The Triadic color harmony groups three colors that are evenly spaced from another and form a triangle on the color wheel.



54.9706, 54.7211, 50.8450



47.8892, 54.7211, 57.0150



53.3522, 54.7211, 72.1865

Complementary

The Complementary color scheme is a pair of colors which are on the opposite of each other on the color wheel.



54.9706, 54.7211, 50.8450



53.2881, 58.8026, 73.5078

Split Complementary

Split-complementary colors differ from the complementary color scheme. The scheme consists of three colors, the original color and two neighbors of the complement color.



51.1066, 54.7211, 72.5539



54.9706, 54.7211, 50.8450



47.9959, 54.7211, 63.4730

Square

The Square scheme is like the rectangle color scheme, but the four colors are evenly spaced on the color wheel.



54.9706, 54.7211, 50.8450



48.8632, 54.7211, 51.6425



49.1591, 54.7211, 69.2665



55.2907, 54.7211, 68.2962

Rectangle

The Rectangle color scheme consists of four colors that form a rectangle on the color wheel.



54.9706, 54.7211, 50.8450



51.4191, 54.7211, 48.1181



49.1591, 54.7211, 69.2665



52.6070, 54.7211, 72.7358

Sweetspot

The Sweet Spot groups the original color and five complimentary colors.



54.9721, 54.7236, 50.8462



90.1974, 93.4715, 97.4893



55.8301, 51.7179, 65.6883



19.1647, 19.8161, 20.5364



0.0000, 0.0000, 0.0000



20.3446, 21.4041, 23.3091

Same Dimension

The Same Dimension uses a secret algorithm to generate beautiful new colors.



54.9721, 54.7236, 50.8462



77.2552, 75.8518, 67.6958



59.0162, 62.8118, 52.1942



12.7014, 12.9770, 12.9961



17.7976, 10.7124, 1.1297



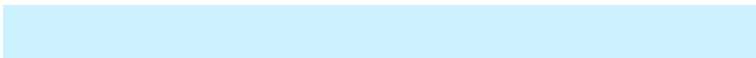
1.1430, 0.7853, 0.0913

Inverse Universe

The Inverse Universe completely reimagines the original color for something new.



53.2881, 58.8026, 73.5078



74.3562, 82.8661, 106.6835



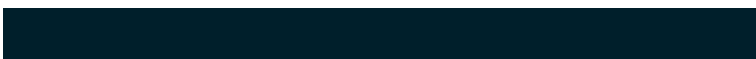
49.2866, 50.7995, 72.1739



12.4869, 13.4972, 15.8846



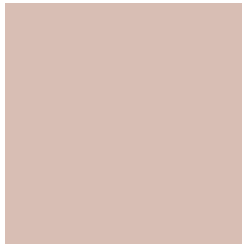
14.4657, 17.1933, 41.0094



0.9405, 1.1729, 2.4961

Previews

White Background



This preview shows how the XYZ color 54.9706, 54.7211, 50.8450 looks on a white background.

Color Contrast Check

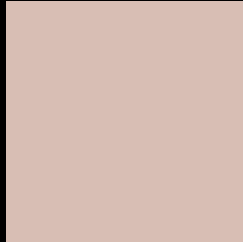
Large Text (above 18pt) WCAG AA × Fail

Any Text WCAG AA × Fail

Large Text (above 18pt) WCAG AAA × Fail

Any Text WCAG AAA × Fail

Black Background



This preview shows how the XYZ color 54.9706, 54.7211, 50.8450 looks on a black background.

Color Contrast Check

Large Text (above 18pt) WCAG AA ✓ Pass

Any Text WCAG AA ✓ Pass

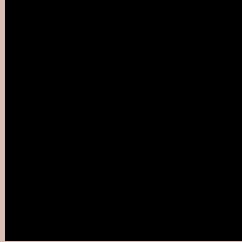
Large Text (above 18pt) WCAG AAA ✓ Pass

Any Text WCAG AAA ✓ Pass

If you want to check with other color combinations, try the [Color Contrast Checker](#).

XYZ 54.9706, 54.7211, 50.8450

Background



This preview shows how black text looks on a background with the XYZ color 54.9706, 54.7211, 50.8450.



This preview shows how white text looks on a background with the XYZ color 54.9706, 54.7211,

50.8450.

Color Blindness Simulation

Color vision deficiency is a very complex topic, and I could not describe the different causes any better than Wikipedia does, so if you want to learn more, you should check out their [article about color blindness](#).

Dichromacy



Original Color

54.9706, 54.7211, 50.8450

Protanopia

52.3157, 54.9642, 52.1078

Deuteranopia

55.9510, 54.9061, 50.8290



Tritanopia

57.5264, 54.8178, 62.8073

Trichromacy



Original Color

54.9706, 54.7211, 50.8450

Protanomaly

53.1426, 54.7415, 51.4813

Deuteranomaly

55.6492, 54.7505, 50.8149

Tritanomaly

56.5223, 54.7221, 58.0355

Monochromacy



Original Color

54.9706, 54.7211, 50.8450

Achromatopsia

53.0703, 55.8340, 60.8033

Achromatomaly

53.5976, 55.1825, 57.1166

CSS Examples

Text

The CSS property to change the color of the text to XYZ 54.9706, 54.7211, 50.8450 is called "color". The color property can be set on classes, ids or directly on the HTML element.

This example shows how text in the color `rgb(216, 190, 180)` looks like.

```
.text, #text, p{  
    color:rgb(216, 190, 180)  
}
```

If you want to add a text shadow in that color use the text-shadow property, you can generate a text shadow directly with our [CSS Text Shadow Generator](#).

Here you see how black text with a 4 pixel rgb(216, 190, 180) colored shadow looks like.

```
.shadow{ text-shadow: 4px 4px 2px rgb(216, 190, 180) }
```

Border

The CSS property to change the border of an element to XYZ 54.9706, 54.7211, 50.8450 is called "border". The border property can be set on classes, ids or directly on the HTML element.

This example shows the color as border, it can be applied via the CSS property "border" or "border-color".

```
.border, #border, table{ border:4px solid rgb(216, 190, 180) }
```


If only the border color should be changed use the property `border-color`.

```
.border{ border-color:rgb(216, 190, 180) }
```

If you want to add a box shadow in that color use:

Here you see how a box with a 4 pixel `rgb(216, 190, 180)` colored shadow looks like.

```
.boxshadow{ -moz-box-shadow:4px 4px 4px  
4px rgb(216, 190, 180); -webkit-box-  
shadow:4px 4px 4px 4px rgb(216, 190, 180);  
box-shadow:4px 4px 4px 4px rgb(216, 190,  
180) }
```

Background

The CSS property to change the background color of an element to XYZ 54.9706, 54.7211, 50.8450 is called "background". The background property can be set on classes, ids or directly on the HTML element.

```
.background, #background, body{  
background: rgb(216, 190, 180) }
```

If only the background color should be changed can be used:

```
.background{ background-color: rgb(216,  
190, 180) }
```

This example shows the color as background, it is applied via the CSS property "background".

To optimize and compress your CSS code, you can use our [online CSS compressor and optimizer](#) based on csstidy. If you want to create a linear or radial gradient as background or border, check our [CSS Gradient Generator](#).

Hey! You found this booklet interesting? Support Converting Colors with the new Membership Option!

The pro membership hides all ads, plus gives you double the colors in the color bucket, and more awesome pro features!

[Learn more, Memberships starting at \\$2.50/m!](#)

**Follow me
on Twitter!**

@ConvertingColor