

Converting Colors

XYZ(54.9885, 53.9021, 59.1421)

Have a look what the booklet for
XYZ(54.9885, 53.9021, 59.1421)
contains.

XYZ(54.9849, 53.9036, 59.1362)	3
<i>Conversions</i>	4
<i>Details</i>	6
<i>Harmonies</i>	12
<i>Previews</i>	24
<i>Color Blindness Simulation</i>	28
<i>CSS Examples</i>	31

Color

**XYZ(54.9849, 53.9036,
59.1362)**

Conversions

Conversions Part 1

Format	Color
Hex	D4BCC3
RGB	212, 188, 195
RGB Percent	83%, 74%, 76%
CMY	0.1686, 0.2627, 0.2353
CMYK	0.00, 0.11, 0.08, 0.17
HSL	343°, 22%, 78%
HSV	343°, 11%, 83%
XYZ	54.9849, 53.9036, 59.1362
YIQ	195.9740, 12.0570, 7.2650

Conversions

Conversions Part 2

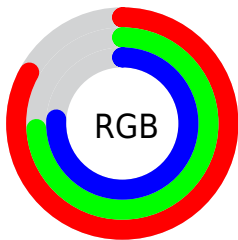
Format	Color
RYP	212, 188, 195
Decimal	13941955
CIE Lab	78.41, 9.70, -0.41
CIE LCh	78, 9.707, 357.581
Yxy	53.9036, 0.3272, 0.3208
Android (android.graphics.Color)	4292132035 (0xFFD4BCC3)
YUV	195.9740, -0.4802, 14.0548
Hunter-Lab	73.4191, 5.1986, 3.6376

Details

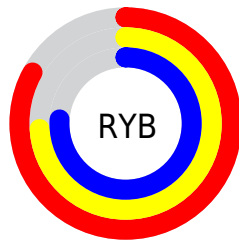
The XYZ color **54.9849, 53.9036, 59.1362** is a light color, and the websafe version is hex **CCCCCC**. A complement of this color would be **55.3040, 62.1874, 66.8491**, and the grayscale version is **52.4527, 55.1844, 60.0958**.

A 20% lighter version of the original color is **91.1614, 92.9896, 105.2395**, and **27.3763, 26.4191, 28.8558** is the 20% darker color. If you saturate the color by 10%, you get **49.1711, 44.8578, 49.2374**, and if you desaturate by 10%, it is **61.6379, 64.3530, 70.1587**.

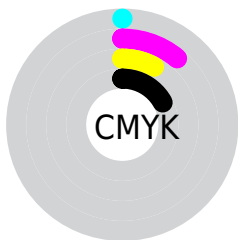
Distribution



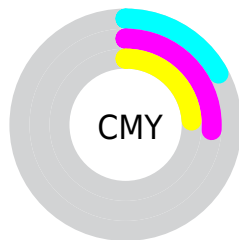
- Red (83%)
- Green (74%)
- Blue (76%)



- Red (83%)
- Yellow (74%)
- Blue (76%)



- Cyan (0%)
- Magenta (11%)
- Yellow (8%)
- Black (17%)



- Cyan (17%)
- Magenta (26%)
- Yellow (24%)

Brightness & Saturation Gradients

These gradients show how the XYZ color 54.9849, 53.9036, 59.1362 changes by changing the brightness by 10 percent. The first figure shows a shift by +10% for each color and the second figure -10%.

Similar to the brightness gradients but the following saturation gradients show a change of the XYZ color 54.9849, 53.9036, 59.1362 by changing the saturation by 10% instead.

■ 54.9849, 53.9036,
59.1362

■ 54.9849, 53.9036,
59.1362

395.9920,
401.7423, 439.1224

■ 39.6234, 38.5246,
42.3020

■ 96.6673, 95.9327,
105.1067

■ 27.4280, 26.3901,
29.0105

123.7189,
123.3516, 135.0800

■ 18.0331, 17.1157,
18.8431

155.3979,
155.5525, 170.2702

■ 11.0736, 10.3170,
11.3813

192.0698,
192.9199, 211.0958

■ 6.1840, 5.6097,
6.2065

234.0997,
235.8382, 257.9752

■ 2.9990, 2.6092,
2.9003

281.8532,

■ 1.1532, 0.9313,

284.6918, 311.3271

1.0439

335.6955,
339.8650, 371.5700

■ 0.0690, 0.0000,
0.0000

■ 0.0000, 0.0000,
0.0000

■ 54.9849, 53.9036,
59.1362

■ 54.9849, 53.9036,
59.1362

■ 49.1711, 44.8578,
49.2374

■ 61.6379, 64.3530,
70.1587

■ 44.1579, 37.1486,
40.4229

■ 69.1573, 76.2550,
82.3359

■ 39.9107, 30.7144,
32.6557

■ 77.5751, 89.6651,
95.7018

■ 36.3902, 25.4856,
25.8954

■ 80.9617, 92.7372,
108.2407

■ 33.5538, 21.3863,
20.0991

■ 31.3540, 18.3315,
15.2201

■ 29.7371, 16.2242,
11.2079

■ 28.6394, 14.9490,
8.0057

■ 28.0160, 14.3429,
5.8222

Harmonies

Analogous

The Analogous color harmony consists of three colors that are next to each other on the color wheel.



54.3915, 53.9036, 64.5031



54.9849, 53.9036, 59.1362



54.5527, 53.9036, 53.9632

Triad

The Triadic color harmony groups three colors that are evenly spaced from another and form a triangle on the color wheel.



54.9849, 53.9036, 59.1362



49.5549, 53.9036, 49.8681



49.2932, 53.9036, 68.0094

Complementary

The Complementary color scheme is a pair of colors which are on the opposite of each other on the color wheel.



54.9849, 53.9036, 59.1362



55.3040, 62.1874, 66.8491

Split Complementary

Split-complementary colors differ from the complementary color scheme. The scheme consists of three colors, the original color and two neighbors of the complement color.



48.0522, 53.9036, 63.6890



54.9849, 53.9036, 59.1362



48.2007, 53.9036, 53.2406

Square

The Square scheme is like the rectangle color scheme, but the four colors are evenly spaced on the color wheel.



54.9849, 53.9036, 59.1362



51.3887, 53.9036, 48.8135



47.6572, 53.9036, 58.2497



51.0791, 53.9036, 69.8203

Rectangle

The Rectangle color scheme consists of four colors that form a rectangle on the color wheel.



54.9849, 53.9036, 59.1362



53.7469, 53.9036, 51.2765



47.6572, 53.9036, 58.2497



48.8002, 53.9036, 66.7898

Sweetspot

The Sweet Spot groups the original color and five complimentary colors.



54.9864, 53.9060, 59.1374



91.7975, 94.8716, 103.5718



54.9904, 53.6731, 69.7496



19.4668, 20.0204, 21.8696



0.0000, 0.0000, 0.0000



20.3446, 21.4041, 23.3091

Same Dimension

The Same Dimension uses a secret algorithm to generate beautiful new colors.



54.9864, 53.9060, 59.1374



80.8919, 77.7765, 85.3976



55.2560, 55.6817, 55.4151



12.5707, 12.4798, 13.6796



17.3336, 8.8698, 3.7950



1.0813, 0.5493, 0.4177

Inverse Universe

The Inverse Universe completely reimagines the original color for something new.



54.9864, 53.9060, 59.1374



80.8919, 77.7765, 85.3976



54.9858, 60.1690, 71.0037



12.5707, 12.4798, 13.6796



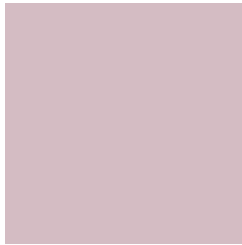
17.3336, 8.8698, 3.7950



1.0813, 0.5493, 0.4177

Previews

White Background



This preview shows how the XYZ color 54.9849, 53.9036, 59.1362 looks on a white background.

Color Contrast Check

Large Text (above 18pt) WCAG AA × Fail

Any Text WCAG AA × Fail

Large Text (above 18pt) WCAG AAA × Fail

Any Text WCAG AAA × Fail

Black Background



This preview shows how the XYZ color 54.9849, 53.9036, 59.1362 looks on a black background.

Color Contrast Check

Large Text (above 18pt) WCAG AA ✓ Pass

Any Text WCAG AA ✓ Pass

Large Text (above 18pt) WCAG AAA ✓ Pass

Any Text WCAG AAA ✓ Pass

If you want to check with other color combinations, try the [Color Contrast Checker](#).

XYZ 54.9849, 53.9036, 59.1362

Background



This preview shows how black text looks on a background with the XYZ color 54.9849, 53.9036, 59.1362.



This preview shows how white text looks on a background with the XYZ color 54.9849, 53.9036,

Color Blindness Simulation

Color vision deficiency is a very complex topic, and I could not describe the different causes any better than Wikipedia does, so if you want to learn more, you should check out their [article about color blindness](#).

Dichromacy



Original Color

54.9849, 53.9036, 59.1362

Protanopia

52.0280, 53.9529, 61.0979

Deuteranopia

54.9849, 53.9036, 59.1362



Tritanopia

55.8716, 53.9510, 63.3460

Trichromacy



Original Color

54.9849, 53.9036, 59.1362

Protanomaly

53.0660, 53.8494, 60.4204

Deuteranomaly

54.9849, 53.9036, 59.1362

Tritanomaly

55.5197, 53.8103, 61.4931

Monochromacy



Original Color

54.9849, 53.9036, 59.1362

Achromatopsia

52.4687, 55.2011, 60.1140

Achromatomaly

53.3909, 54.6820, 59.9652

CSS Examples

Text

The CSS property to change the color of the text to XYZ 54.9849, 53.9036, 59.1362 is called "color". The color property can be set on classes, ids or directly on the HTML element.

This example shows how text in the color rgb(212, 188, 195) looks like.

```
.text, #text, p{  
    color:rgb(212, 188, 195)  
}
```

If you want to add a text shadow in that color use the text-shadow property, you can generate a text shadow directly with our [CSS Text Shadow Generator](#).

Here you see how black text with a 4 pixel rgb(212, 188, 195) colored shadow looks like.

```
.shadow{ text-shadow: 4px 4px 2px rgb(212, 188, 195) }
```

Border

The CSS property to change the border of an element to XYZ 54.9849, 53.9036, 59.1362 is called "border". The border property can be set on classes, ids or directly on the HTML element.

This example shows the color as border, it can be applied via the CSS property "border" or "border-color".

```
.border, #border, table{ border:4px solid rgb(212, 188, 195) }
```


If only the border color should be changed use the property `border-color`.

```
.border{ border-color:rgb(212, 188, 195) }
```

If you want to add a box shadow in that color use:

Here you see how a box with a 4 pixel `rgb(212, 188, 195)` colored shadow looks like.

```
.boxshadow{ -moz-box-shadow:4px 4px 4px  
4px rgb(212, 188, 195); -webkit-box-  
shadow:4px 4px 4px 4px rgb(212, 188, 195);  
box-shadow:4px 4px 4px 4px rgb(212, 188,  
195) }
```

Background

The CSS property to change the background color of an element to XYZ 54.9849, 53.9036, 59.1362 is called "background". The background property can be set on classes, ids or directly on the HTML element.

```
.background, #background, body{  
background: rgb(212, 188, 195) }
```

If only the background color should be changed can be used:

```
.background{ background-color: rgb(212,  
188, 195) }
```

This example shows the color as background, it is applied via the CSS property "background".

To optimize and compress your CSS code, you can use our [online CSS compressor and optimizer](#) based on csstidy. If you want to create a linear or radial gradient as background or border, check our [CSS Gradient Generator](#).

Hey! You found this booklet interesting? Support Converting Colors with the new Membership Option!

The pro membership hides all ads, plus gives you double the colors in the color bucket, and more awesome pro features!

[Learn more, Memberships starting at \\$2.50/m!](#)

**Follow me
on Twitter!**

@ConvertingColor