

Converting Colors

XYZ(54.9962, 53.8774, 63.3198)

Have a look what the booklet for
XYZ(54.9962, 53.8774, 63.3198)
contains.

XYZ(54.9384, 53.7860, 63.3633)	3
<i>Conversions</i>	4
<i>Details</i>	6
<i>Harmonies</i>	12
<i>Previews</i>	24
<i>Color Blindness Simulation</i>	28
<i>CSS Examples</i>	31

Color

**XYZ(54.9384, 53.7860,
63.3633)**

Conversions

Conversions Part 1

Format	Color
Hex	D1BCCA
RGB	209, 188, 202
RGB Percent	82%, 74%, 79%
CMY	0.1804, 0.2627, 0.2078
CMYK	0.00, 0.10, 0.03, 0.18
HSL	320°, 19%, 78%
HSV	320°, 10%, 82%
XYZ	54.9384, 53.7860, 63.3633
YIQ	195.8750, 8.0220, 8.8060

Conversions

Conversions Part 2

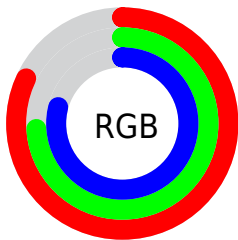
Format	Color
R _Y B	209, 188, 202
Decimal	13745354
CIE Lab	78.34, 9.88, -4.33
CIE LCh	78, 10.783, 336.341
Yxy	53.7860, 0.3192, 0.3125
Android (android.graphics.Color)	4291935434 (0xFFD1BCCA)
YUV	195.8750, 3.0196, 11.5106
Hunter-Lab	73.3389, 5.3717, 0.1119

Details

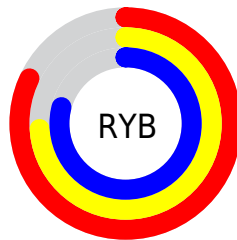
The XYZ color **54.9384, 53.7860, 63.3633** is a light color, and the websafe version is hex **CCCCCC**. A complement of this color would be **53.3919, 60.2339, 60.4449**, and the grayscale version is **52.3748, 55.1024, 60.0065**.

A 20% lighter version of the original color is **91.6407, 93.1814, 107.7636**, and **27.5268, 26.4346, 31.6685** is the 20% darker color. If you saturate the color by 10%, you get **49.9869, 45.1730, 57.7342**, and if you desaturate by 10%, it is **60.5768, 63.7117, 69.4065**.

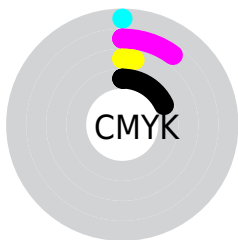
Distribution



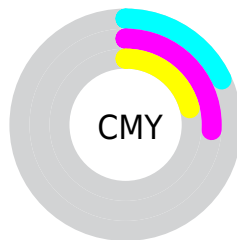
- Red (82%)
- Green (74%)
- Blue (79%)



- Red (82%)
- Yellow (74%)
- Blue (79%)



- Cyan (0%)
- Magenta (10%)
- Yellow (3%)
- Black (18%)



- Cyan (18%)
- Magenta (26%)
- Yellow (21%)

Brightness & Saturation Gradients

These gradients show how the XYZ color 54.9384, 53.7860, 63.3633 changes by changing the brightness by 10 percent. The first figure shows a shift by +10% for each color and the second figure -10%.

Similar to the brightness gradients but the following saturation gradients show a change of the XYZ color 54.9384, 53.7860, 63.3633 by changing the saturation by 10% instead.

■ 54.9384, 53.7860,
63.3633

■ 54.9384, 53.7860,
63.3633

395.8186,
401.2934, 455.0310

■ 39.5861, 38.4306,
45.6923

■ 96.5995, 95.7600,
111.2841

■ 27.3987, 26.3171,
31.6562

123.6391,
123.1473, 142.3710

■ 18.0110, 17.0610,
20.8364

155.3050,
155.3141, 178.7669

■ 11.0576, 10.2780,
12.8144

191.9627,
192.6447, 220.8904

■ 6.1732, 5.5837,
7.1716

233.9776,
235.5236, 269.1600

■ 2.9923, 2.5936,
3.4896

281.7149,

■ 1.1497, 0.9235,

284.3350, 323.9943

1.3497

335.5402,
339.4635, 385.8118

■ 0.0661, 0.0000,
0.1020

■ 0.0000, 0.0000,
0.0000

■ 54.9384, 53.7860,
63.3633

■ 54.9384, 53.7860,
63.3633

■ 49.9869, 45.1730,
57.7342

■ 60.5768, 63.7117,
69.4065

■ 45.6895, 37.8101,
52.5039

■ 66.9240, 74.9953,
75.8714

■ 42.0176, 31.6401,
47.6612

■ 74.0065, 87.6884,
82.7699

■ 38.9386, 26.5988,
43.1925

■ 76.3200, 90.7815,
88.2695

■ 36.4169, 22.6155,
39.0835

■ 77.3177, 91.1806,
93.5235

■ 34.4127, 19.6117,
35.3184

■ 78.3550, 91.5955,
98.9858

■ 32.8808, 17.4979,
31.8793

■ 79.4323, 92.0265,
104.6587

■ 31.7679, 16.1680,
28.7459

■ 80.1049, 92.2955,
108.2006

■ 30.9787, 15.4290,
25.8951

Harmonies

Analogous

The Analogous color harmony consists of three colors that are next to each other on the color wheel.



53.5702, 53.7860, 68.4559



54.9384, 53.7860, 63.3633



55.2716, 53.7860, 57.2867

Triad

The Triadic color harmony groups three colors that are evenly spaced from another and form a triangle on the color wheel.



54.9384, 53.7860, 63.3633



50.6741, 53.7860, 47.7334



47.9155, 53.7860, 65.7409

Complementary

The Complementary color scheme is a pair of colors which are on the opposite of each other on the color wheel.



54.9384, 53.7860, 63.3633



53.3919, 60.2339, 60.4449

Split Complementary

Split-complementary colors differ from the complementary color scheme. The scheme consists of three colors, the original color and two neighbors of the complement color.



47.1854, 53.7860, 59.8598



54.9384, 53.7860, 63.3633



48.7496, 53.7860, 49.6737

Square

The Square scheme is like the rectangle color scheme, but the four colors are evenly spaced on the color wheel.



54.9384, 53.7860, 63.3633



52.7714, 53.7860, 48.5298



47.4865, 53.7860, 54.0130



49.5072, 53.7860, 69.8935

Rectangle

The Rectangle color scheme consists of four colors that form a rectangle on the color wheel.



54.9384, 53.7860, 63.3633



54.8540, 53.7860, 53.5461



47.4865, 53.7860, 54.0130



47.5632, 53.7860, 63.8856

Sweetspot

The Sweet Spot groups the original color and five complimentary colors.



54.9399, 53.7883, 63.3645



92.2499, 95.0526, 105.9543



51.9997, 52.1746, 67.6525



19.5888, 20.0692, 22.5123



0.0000, 0.0000, 0.0000



20.3446, 21.4041, 23.3091

Same Dimension

The Same Dimension uses a secret algorithm to generate beautiful new colors.



54.9399, 53.7883, 63.3645



84.4539, 81.3668, 97.4790



53.7387, 53.3078, 57.0388



12.1363, 11.9392, 13.9933



19.1476, 9.5319, 16.2155



1.1066, 0.5474, 1.0963

Inverse Universe

The Inverse Universe completely reimagines the original color for something new.



54.9399, 53.7883, 63.3645



84.4539, 81.3668, 97.4790



54.6212, 60.7256, 66.9181



12.1363, 11.9392, 13.9933



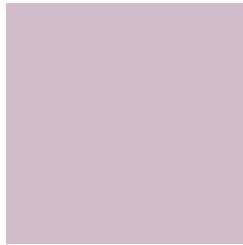
19.1476, 9.5319, 16.2155



1.1066, 0.5474, 1.0963

Previews

White Background



This preview shows how the XYZ color 54.9384, 53.7860, 63.3633 looks on a white background.

Color Contrast Check

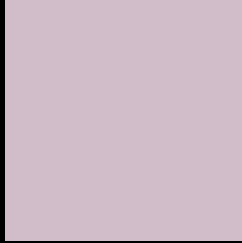
Large Text (above 18pt) WCAG AA × Fail

Any Text WCAG AA × Fail

Large Text (above 18pt) WCAG AAA × Fail

Any Text WCAG AAA × Fail

Black Background



This preview shows how the XYZ color 54.9384, 53.7860, 63.3633 looks on a black background.

Color Contrast Check

Large Text (above 18pt) WCAG AA ✓ Pass

Any Text WCAG AA ✓ Pass

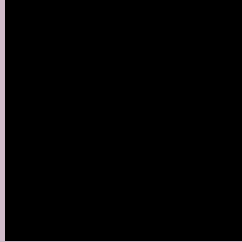
Large Text (above 18pt) WCAG AAA ✓ Pass

Any Text WCAG AAA ✓ Pass

If you want to check with other color combinations, try the [Color Contrast Checker](#).

XYZ 54.9384, 53.7860, 63.3633

Background



This preview shows how black text looks on a background with the XYZ color 54.9384, 53.7860, 63.3633.



This preview shows how white text looks on a background with the XYZ color 54.9384, 53.7860,

Color Blindness Simulation

Color vision deficiency is a very complex topic, and I could not describe the different causes any better than Wikipedia does, so if you want to learn more, you should check out their [article about color blindness](#).

Dichromacy



Original Color

54.9384, 53.7860, 63.3633

Protanopia

52.3375, 54.0170, 65.4255

Deuteranopia

54.9384, 53.7860, 63.3633



Tritanopia

55.0572, 53.8335, 63.9890

Trichromacy



Original Color

54.9384, 53.7860, 63.3633

Protanomaly

53.0831, 53.7634, 64.7063

Deuteranomaly

54.9384, 53.7860, 63.3633

Tritanomaly

55.0572, 53.8335, 63.9890

Monochromacy



Original Color

54.9384, 53.7860, 63.3633

Achromatopsia

52.4687, 55.2011, 60.1140

Achromatomaly

53.3504, 54.6347, 61.1598

CSS Examples

Text

The CSS property to change the color of the text to XYZ 54.9384, 53.7860, 63.3633 is called "color". The color property can be set on classes, ids or directly on the HTML element.

This example shows how text in the color rgb(209, 188, 202) looks like.

```
.text, #text, p{  
    color:rgb(209, 188, 202)  
}
```

If you want to add a text shadow in that color use the text-shadow property, you can generate a text shadow directly with our [CSS Text Shadow Generator](#).

Here you see how black text with a 4 pixel rgb(209, 188, 202) colored shadow looks like.

```
.shadow{ text-shadow: 4px 4px 2px rgb(209, 188, 202) }
```

Border

The CSS property to change the border of an element to XYZ 54.9384, 53.7860, 63.3633 is called "border". The border property can be set on classes, ids or directly on the HTML element.

This example shows the color as border, it can be applied via the CSS property "border" or "border-color".

```
.border, #border, table{ border:4px solid rgb(209, 188, 202) }
```


If only the border color should be changed use the property `border-color`.

```
.border{ border-color:rgb(209, 188, 202) }
```

If you want to add a box shadow in that color use:

Here you see how a box with a 4 pixel `rgb(209, 188, 202)` colored shadow looks like.

```
.boxshadow{ -moz-box-shadow:4px 4px 4px  
4px rgb(209, 188, 202); -webkit-box-  
shadow:4px 4px 4px 4px rgb(209, 188, 202);  
box-shadow:4px 4px 4px 4px rgb(209, 188,  
202) }
```

Background

The CSS property to change the background color of an element to XYZ 54.9384, 53.7860, 63.3633 is called "background". The background property can be set on classes, ids or directly on the HTML element.

```
.background, #background, body{  
background: rgb(209, 188, 202) }
```

If only the background color should be changed can be used:

```
.background{ background-color: rgb(209,  
188, 202) }
```

This example shows the color as background, it is applied via the CSS property "background".

To optimize and compress your CSS code, you can use our [online CSS compressor and optimizer](#) based on csstidy. If you want to create a linear or radial gradient as background or border, check our [CSS Gradient Generator](#).

Hey! You found this booklet interesting? Support Converting Colors with the new Membership Option!

The pro membership hides all ads, plus gives you double the colors in the color bucket, and more awesome pro features!

[Learn more, Memberships starting at \\$2.50/m!](#)

**Follow me
on Twitter!**

@ConvertingColor