

Converting Colors

XYZ(55.0449, 55.5432, 53.9604)

Have a look what the booklet for
XYZ(55.0449, 55.5432, 53.9604)
contains.

XYZ(54.9783, 55.6398, 53.7408)	3
<i>Conversions</i>	4
<i>Details</i>	6
<i>Harmonies</i>	12
<i>Previews</i>	24
<i>Color Blindness Simulation</i>	28
<i>CSS Examples</i>	31

Color

**XYZ(54.9783, 55.6398,
53.7408)**

Conversions

Conversions Part 1

Format	Color
Hex	D4C1B9
RGB	212, 193, 185
RGB Percent	83%, 76%, 73%
CMY	0.1686, 0.2431, 0.2745
CMYK	0.00, 0.09, 0.13, 0.17
HSL	18°, 24%, 78%
HSV	18°, 13%, 83%
XYZ	54.9783, 55.6398, 53.7408
YIQ	197.7690, 13.8920, 1.5400

Conversions

Conversions Part 2

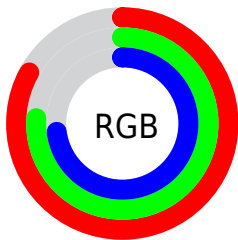
Format	Color
R _Y B	212, 196, 185
Decimal	13943225
CIE Lab	79.41, 5.36, 6.44
CIE LCh	79, 8.379, 50.241
Yxy	55.6398, 0.3345, 0.3385
Android (android.graphics.Color)	4292133305 (0xFFD4C1B9)
YUV	197.7690, -6.2951, 12.4806
Hunter-Lab	74.5921, 1.0277, 9.4982

Details

The XYZ color **54.9783, 55.6398, 53.7408** is a light color, and the websafe version is hex **CCCCCC**. A complement of this color would be **53.4838, 58.2522, 70.7128**, and the grayscale version is **53.5687, 56.3584, 61.3743**.

A 20% lighter version of the original color is **90.9929, 95.3622, 96.8300**, and **27.4476, 27.5902, 25.7086** is the 20% darker color. If you saturate the color by 10%, you get **49.7728, 48.5469, 41.7751**, and if you desaturate by 10%, it is **60.8532, 63.5363, 67.5773**.

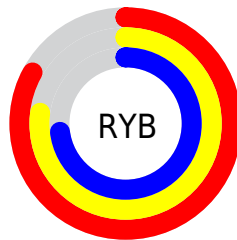
Distribution



Red (83%)

Green (76%)

Blue (73%)



Red (83%)

Yellow (77%)

Blue (73%)

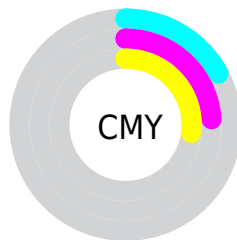


Cyan (0%)

Magenta (9%)

Yellow (13%)

Black (17%)



Cyan (17%)


Magenta (24%)

Yellow (27%)

Brightness & Saturation Gradients


These gradients show how the XYZ color 54.9783, 55.6398, 53.7408 changes by changing the brightness by 10 percent. The first figure shows a shift by +10% for each color and the second figure -10%.


Similar to the brightness gradients but the following saturation gradients show a change of the XYZ color 54.9783, 55.6398, 53.7408 by changing the saturation by 10% instead.


 54.9783, 55.6398,
53.7408

 54.9783, 55.6398,
53.7408


395.9674,
408.3326, 418.2675

 39.6181, 39.9142,
38.0027


 96.6577, 98.4777,
97.1461

 27.4238, 27.4717,
25.6829


123.7076,
126.3589, 125.6504

 18.0300, 17.9278,
16.3630


155.3848,
159.0606, 159.2472

 11.0713, 10.8981,
9.6242

192.0546,
196.9674, 198.3551

 6.1825, 5.9984,
5.0482

234.0824,
240.4636, 243.3925

 2.9981, 2.8441,
2.2163

281.8336,

 1.1527, 1.0509,

289.9336, 294.7780

0.6838

335.6735,
345.7618, 352.9301

■ 0.0686, 0.0000,
0.0000

■ 0.0000, 0.0000,
0.0000

■ 54.9783, 55.6398,
53.7408

■ 54.9783, 55.6398,
53.7408

■ 49.7728, 48.5469,
41.7751

■ 60.8532, 63.5363,
67.5773

■ 45.2076, 42.2247,
31.5960

■ 67.4161, 72.2532,
83.3570

■ 41.2581, 36.6487,
23.1178

■ 74.6906, 81.8163,
101.1526

■ 37.8963, 31.7905,
16.2465

■ 80.2218, 91.2575,
107.9941

■ 35.0919, 27.6197,
10.8789

■ 80.9616, 92.7372,
108.2407

■ 32.8117, 24.1035,
6.8996

■ 31.0183, 21.2062,
4.1760

■ 29.6683, 18.8881,
2.5491

■ 28.9207, 17.5353,
1.8604

Harmonies

Analogous

The Analogous color harmony consists of three colors that are next to each other on the color wheel.



55.9751, 55.6398, 57.4356



54.9783, 55.6398, 53.7408



53.4337, 55.6398, 51.9092

Triad

The Triadic color harmony groups three colors that are evenly spaced from another and form a triangle on the color wheel.



54.9783, 55.6398, 53.7408



49.7619, 55.6398, 59.0267



54.0102, 55.6398, 69.6896

Complementary

The Complementary color scheme is a pair of colors which are on the opposite of each other on the color wheel.



54.9783, 55.6398, 53.7408



53.4838, 58.2522, 70.7128

Split Complementary

Split-complementary colors differ from the complementary color scheme. The scheme consists of three colors, the original color and two neighbors of the complement color.



52.3380, 55.6398, 70.1713



54.9783, 55.6398, 53.7408



49.9088, 55.6398, 63.8419

Square

The Square scheme is like the rectangle color scheme, but the four colors are evenly spaced on the color wheel.



54.9783, 55.6398, 53.7408



50.4378, 55.6398, 54.8525



50.8435, 55.6398, 67.9811



55.4080, 55.6398, 66.6978

Rectangle

The Rectangle color scheme consists of four colors that form a rectangle on the color wheel.



54.9783, 55.6398, 53.7408



52.3113, 55.6398, 51.9215



50.8435, 55.6398, 67.9811



53.4607, 55.6398, 70.1563

Sweetspot

The Sweet Spot groups the original color and five complimentary colors.



54.9798, 55.6423, 53.7420



91.2041, 94.8668, 99.7304



55.4421, 53.0722, 64.6695



19.3707, 20.1037, 20.9888



0.0000, 0.0000, 0.0000



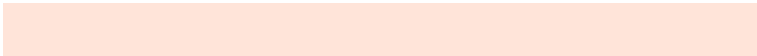
20.3446, 21.4041, 23.3091

Same Dimension

The Same Dimension uses a secret algorithm to generate beautiful new colors.



54.9798, 55.6423, 53.7420



81.4998, 81.7926, 76.9673



58.0164, 61.7153, 54.7542



12.7203, 13.0148, 13.0024



17.9304, 10.9781, 1.1739



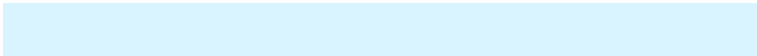
1.1530, 0.8052, 0.0947

Inverse Universe

The Inverse Universe completely reimagines the original color for something new.



53.4838, 58.2522, 70.7128



78.8397, 86.4309, 107.1353



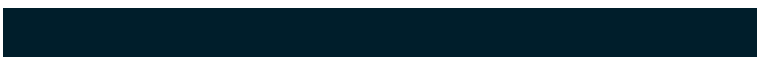
50.4901, 52.2647, 69.7148



12.4669, 13.4572, 15.8779



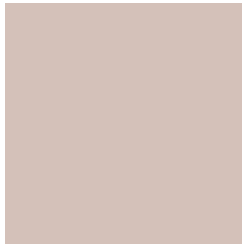
14.0772, 16.4161, 40.8798



0.9195, 1.1310, 2.4892

Previews

White Background



This preview shows how the XYZ color 54.9783, 55.6398, 53.7408 looks on a white background.

Color Contrast Check

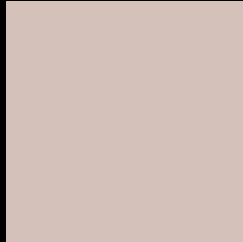
Large Text (above 18pt) WCAG AA × Fail

Any Text WCAG AA × Fail

Large Text (above 18pt) WCAG AAA × Fail

Any Text WCAG AAA × Fail

Black Background



This preview shows how the XYZ color 54.9783, 55.6398, 53.7408 looks on a black background.

Color Contrast Check

Large Text (above 18pt) WCAG AA ✓ Pass

Any Text WCAG AA ✓ Pass

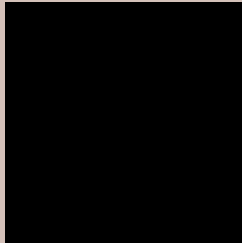
Large Text (above 18pt) WCAG AAA ✓ Pass

Any Text WCAG AAA ✓ Pass

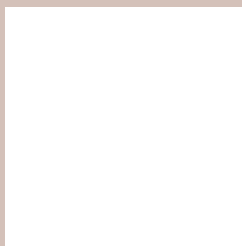
If you want to check with other color combinations, try the [Color Contrast Checker](#).

XYZ 54.9783, 55.6398, 53.7408

Background



This preview shows how black text looks on a background with the XYZ color 54.9783, 55.6398, 53.7408.



This preview shows how white text looks on a background with the XYZ color 54.9783, 55.6398,

Color Blindness Simulation

Color vision deficiency is a very complex topic, and I could not describe the different causes any better than Wikipedia does, so if you want to learn more, you should check out their [article about color blindness](#).

Dichromacy



Original Color

54.9783, 55.6398, 53.7408

Protanopia

53.3382, 55.7642, 54.9661

Deuteranopia

56.7916, 55.5877, 54.1906



Tritanopia

57.4572, 55.6818, 65.4769

Trichromacy



Original Color

54.9783, 55.6398, 53.7408

Protanomaly

53.8316, 55.6972, 54.3678

Deuteranomaly

56.1090, 55.5585, 54.2210

Tritanomaly

56.5554, 55.6350, 61.1839

Monochromacy



Original Color

54.9783, 55.6398, 53.7408

Achromatopsia

53.6758, 56.4712, 61.4971

Achromatomaly

53.9942, 56.0266, 58.4205

CSS Examples

Text

The CSS property to change the color of the text to XYZ 54.9783, 55.6398, 53.7408 is called "color". The color property can be set on classes, ids or directly on the HTML element.

This example shows how text in the color `rgb(212, 193, 185)` looks like.

```
.text, #text, p{  
    color:rgb(212, 193, 185)  
}
```

If you want to add a text shadow in that color use the text-shadow property, you can generate a text shadow directly with our [CSS Text Shadow Generator](#).

Here you see how black text with a 4 pixel rgb(212, 193, 185) colored shadow looks like.

```
.shadow{ text-shadow: 4px 4px 2px rgb(212, 193, 185) }
```

Border

The CSS property to change the border of an element to XYZ 54.9783, 55.6398, 53.7408 is called "border". The border property can be set on classes, ids or directly on the HTML element.

This example shows the color as border, it can be applied via the CSS property "border" or "border-color".

```
.border, #border, table{ border:4px solid rgb(212, 193, 185) }
```


If only the border color should be changed use the property `border-color`.

```
.border{ border-color:rgb(212, 193, 185) }
```

If you want to add a box shadow in that color use:

Here you see how a box with a 4 pixel `rgb(212, 193, 185)` colored shadow looks like.

```
.boxshadow{ -moz-box-shadow:4px 4px 4px  
4px rgb(212, 193, 185); -webkit-box-  
shadow:4px 4px 4px 4px rgb(212, 193, 185);  
box-shadow:4px 4px 4px 4px rgb(212, 193,  
185) }
```

Background

The CSS property to change the background color of an element to XYZ 54.9783, 55.6398, 53.7408 is called "background". The background property can be set on classes, ids or directly on the HTML element.

```
.background, #background, body{  
background: rgb(212, 193, 185) }
```

If only the background color should be changed can be used:

```
.background{ background-color: rgb(212,  
193, 185) }
```

This example shows the color as background, it is applied via the CSS property "background".

To optimize and compress your CSS code, you can use our [online CSS compressor and optimizer](#) based on csstidy. If you want to create a linear or radial gradient as background or border, check our [CSS Gradient Generator](#).

Hey! You found this booklet interesting? Support Converting Colors with the new Membership Option!

The pro membership hides all ads, plus gives you double the colors in the color bucket, and more awesome pro features!

[Learn more, Memberships starting at \\$2.50/m!](#)

**Follow me
on Twitter!**

@ConvertingColor