

Converting Colors

XYZ(55.0654, 56.8090, 47.5824)

Have a look what the booklet for
XYZ(55.0654, 56.8090, 47.5824)
contains.

XYZ(55.0143, 56.7931, 47.5978)	3
<i>Conversions</i>	4
<i>Details</i>	6
<i>Harmonies</i>	12
<i>Previews</i>	24
<i>Color Blindness Simulation</i>	28
<i>CSS Examples</i>	31

Color

**XYZ(55.0143, 56.7931,
47.5978)**

Conversions

Conversions Part 1

Format	Color
Hex	D6C4AD
RGB	214, 196, 173
RGB Percent	84%, 77%, 68%
CMY	0.1608, 0.2314, 0.3216
CMYK	0.00, 0.08, 0.19, 0.16
HSL	34°, 33%, 76%
HSV	34°, 19%, 84%
XYZ	55.0143, 56.7931, 47.5978
YIQ	198.7600, 18.1110, -3.3370

Conversions

Conversions Part 2

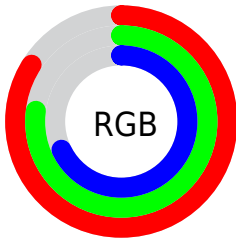
Format	Color
R _Y B	205, 214, 173
Decimal	14075053
CIE Lab	80.06, 2.63, 13.84
CIE LCh	80, 14.085, 79.248
Yxy	56.7931, 0.3451, 0.3563
Android (android.graphics.Color)	4292265133 (0xFFD6C4AD)
YUV	198.7600, -12.6997, 13.3655
Hunter-Lab	75.3612, -1.5756, 15.3055

Details

The XYZ color **55.0143, 56.7931, 47.5978** is a light color, and the websafe version is hex **CCCCCC**. A complement of this color would be **48.0018, 50.9998, 70.9327**, and the grayscale version is **54.2080, 57.0311, 62.1069**.

A 20% lighter version of the original color is **90.3689, 97.1120, 87.3803**, and **27.4223, 28.0974, 22.0672** is the 20% darker color. If you saturate the color by 10%, you get **51.0548, 51.9266, 36.8669**, and if you desaturate by 10%, it is **59.4412, 62.0627, 60.1222**.

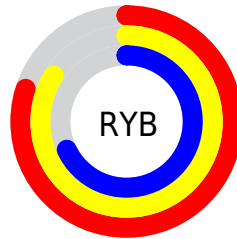
Distribution



Red (84%)

Green (77%)

Blue (68%)



Red (80%)

Yellow (84%)

Blue (68%)

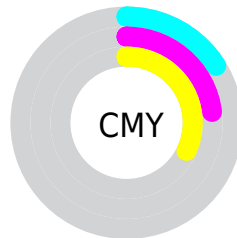


Cyan (0%)

Magenta (8%)

Yellow (19%)

Black (16%)



Cyan (16%)

Magenta (23%)

Yellow (32%)

Brightness & Saturation Gradients

These gradients show how the XYZ color 55.0143, 56.7931, 47.5978 changes by changing the brightness by 10 percent. The first figure shows a shift by +10% for each color and the second figure -10%.

Similar to the brightness gradients but the following saturation gradients show a change of the XYZ color 55.0143, 56.7931, 47.5978 by changing the saturation by 10% instead.

■ 55.0143, 56.7931,
47.5978

■ 55.0143, 56.7931,
47.5978

396.1017,
412.6736, 393.6583

■ 39.6471, 40.8392,
33.1508

■ 96.7101, 100.1632,
87.9646

■ 27.4465, 28.1934,
21.9699

123.7694,
128.3482, 114.7214

■ 18.0471, 18.4715,
13.6367

155.4567,
161.3790, 146.4185

■ 11.0837, 11.2890,
7.7326

192.1375,
199.6399, 183.4746

■ 6.1909, 6.2616,
3.8390

234.1770,
243.5155, 226.3080

■ 3.0033, 3.0048,
1.5374

281.9406,

■ 1.1555, 1.1342,

293.3900, 275.3374

0.2456

335.7937,
349.6479, 330.9813

■ 0.0708, 0.0070,
0.0000

■ 0.0000, 0.0000,
0.0000

■ 55.0143, 56.7931,
47.5978

■ 55.0143, 56.7931,
47.5978

■ 51.0548, 51.9266,
36.8669

■ 59.4412, 62.0627,
60.1222

■ 47.5400, 47.4444,
27.8421

■ 64.3481, 67.7384,
74.5148

■ 44.4520, 43.3373,
20.4341

■ 69.7525, 73.8328,
90.8502

■ 41.7694, 39.5928,
14.5437

■ 75.0843, 80.1213,
106.1153

■ 39.4690, 36.1973,
10.0610

■ 77.8233, 85.5995,
107.0284

■ 37.5244, 33.1360,
6.8607

■ 80.7062, 91.3652,
107.9893

■ 35.9049, 30.3920,
4.7951

■ 81.5417, 93.0362,
108.2678

■ 34.5622, 27.9413,
3.6233

■ 34.4567, 27.7463,
3.5395

Harmonies

Analogous

The Analogous color harmony consists of three colors that are next to each other on the color wheel.



57.6564, 56.7931, 50.6403



55.0143, 56.7931, 47.5978



52.1845, 56.7931, 48.1077

Triad

The Triadic color harmony groups three colors that are evenly spaced from another and form a triangle on the color wheel.



55.0143, 56.7931, 47.5978



48.9448, 56.7931, 67.1860



58.2616, 56.7931, 72.7186

Complementary

The Complementary color scheme is a pair of colors which are on the opposite of each other on the color wheel.



55.0143, 56.7931, 47.5978



48.0018, 50.9998, 70.9327

Split Complementary

Split-complementary colors differ from the complementary color scheme. The scheme consists of three colors, the original color and two neighbors of the complement color.



55.8165, 56.7931, 77.9599



55.0143, 56.7931, 47.5978



50.4635, 56.7931, 74.5755

Square

The Square scheme is like the rectangle color scheme, but the four colors are evenly spaced on the color wheel.



55.0143, 56.7931, 47.5978



48.7472, 56.7931, 58.9414



52.9590, 56.7931, 78.6680



59.5748, 56.7931, 64.8280

Rectangle

The Rectangle color scheme consists of four colors that form a rectangle on the color wheel.



55.0143, 56.7931, 47.5978



50.5695, 56.7931, 50.4078



52.9590, 56.7931, 78.6680



57.5408, 56.7931, 74.8774

Sweetspot

The Sweet Spot groups the original color and five complimentary colors.



55.0158, 56.7956, 47.5990



90.5786, 94.8433, 95.7372



52.1293, 47.9655, 56.0617



19.2868, 20.1831, 20.1985



0.0000, 0.0000, 0.0000



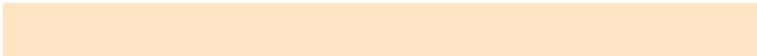
20.3446, 21.4041, 23.3091

Same Dimension

The Same Dimension uses a secret algorithm to generate beautiful new colors.



55.0158, 56.7956, 47.5990



79.3342, 81.4426, 63.9723



58.7268, 65.1003, 49.0064



12.9955, 13.5651, 13.0941



20.9321, 16.9813, 2.1745



1.3443, 1.1878, 0.1584

Inverse Universe

The Inverse Universe completely reimagines the original color for something new.



48.0018, 50.9998, 70.9327



67.0520, 71.2946, 104.8350



44.7723, 43.8628, 69.7253



12.1866, 12.8967, 15.7845



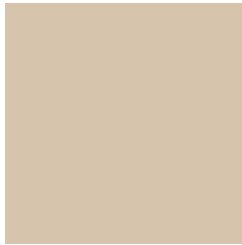
9.8518, 7.9653, 39.4714



0.6758, 0.6437, 2.4079

Previews

White Background



This preview shows how the XYZ color 55.0143, 56.7931, 47.5978 looks on a white background.

Color Contrast Check

Large Text (above 18pt) WCAG AA × Fail

Any Text WCAG AA × Fail

Large Text (above 18pt) WCAG AAA × Fail

Any Text WCAG AAA × Fail

Black Background



This preview shows how the XYZ color 55.0143, 56.7931, 47.5978 looks on a black background.

Color Contrast Check

Large Text (above 18pt) WCAG AA ✓ Pass

Any Text WCAG AA ✓ Pass

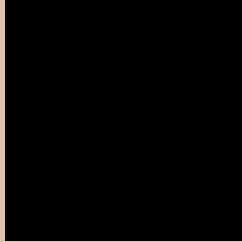
Large Text (above 18pt) WCAG AAA ✓ Pass

Any Text WCAG AAA ✓ Pass

If you want to check with other color combinations, try the [Color Contrast Checker](#).

XYZ 55.0143, 56.7931, 47.5978

Background



This preview shows how black text looks on a background with the XYZ color 55.0143, 56.7931, 47.5978.



This preview shows how white text looks on a background with the XYZ color 55.0143, 56.7931,

Color Blindness Simulation

Color vision deficiency is a very complex topic, and I could not describe the different causes any better than Wikipedia does, so if you want to learn more, you should check out their [article about color blindness](#).

Dichromacy



Original Color

55.0143, 56.7931, 47.5978

Protanopia

53.8465, 56.8541, 48.1803

Deuteranopia

57.9493, 56.6485, 47.9244



Tritanopia

58.6848, 56.6233, 66.2289

Trichromacy



Original Color

55.0143, 56.7931, 47.5978

Protanomaly

54.1846, 56.6901, 48.1309

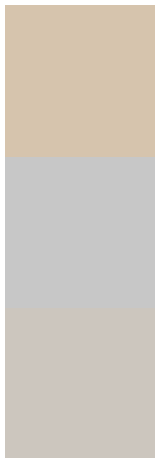
Deuteranomaly

56.8341, 56.7255, 47.9980

Tritanomaly

57.4228, 56.7867, 58.9734

Monochromacy



Original Color

55.0143, 56.7931, 47.5978

Achromatopsia

54.2854, 57.1125, 62.1955

Achromatomaly

54.3902, 56.9432, 56.8397

CSS Examples

Text

The CSS property to change the color of the text to XYZ 55.0143, 56.7931, 47.5978 is called "color". The color property can be set on classes, ids or directly on the HTML element.

This example shows how text in the color rgb(214, 196, 173) looks like.

```
.text, #text, p{  
    color:rgb(214, 196, 173)  
}
```

If you want to add a text shadow in that color use the text-shadow property, you can generate a text shadow directly with our [CSS Text Shadow Generator](#).

Here you see how black text with a 4 pixel rgb(214, 196, 173) colored shadow looks like.

```
.shadow{ text-shadow: 4px 4px 2px rgb(214, 196, 173) }
```

Border

The CSS property to change the border of an element to XYZ 55.0143, 56.7931, 47.5978 is called "border". The border property can be set on classes, ids or directly on the HTML element.

This example shows the color as border, it can be applied via the CSS property "border" or "border-color".

```
.border, #border, table{ border:4px solid rgb(214, 196, 173) }
```


If only the border color should be changed use the property `border-color`.

```
.border{ border-color:rgb(214, 196, 173) }
```

If you want to add a box shadow in that color use:

Here you see how a box with a 4 pixel `rgb(214, 196, 173)` colored shadow looks like.

```
.boxshadow{ -moz-box-shadow:4px 4px 4px  
4px rgb(214, 196, 173); -webkit-box-  
shadow:4px 4px 4px 4px rgb(214, 196, 173);  
box-shadow:4px 4px 4px 4px rgb(214, 196,  
173) }
```

Background

The CSS property to change the background color of an element to XYZ 55.0143, 56.7931, 47.5978 is called "background". The background property can be set on classes, ids or directly on the HTML element.

```
.background, #background, body{  
background: rgb(214, 196, 173) }
```

If only the background color should be changed can be used:

```
.background{ background-color: rgb(214,  
196, 173) }
```

This example shows the color as background, it is applied via the CSS property "background".

To optimize and compress your CSS code, you can use our [online CSS compressor and optimizer](#) based on csstidy. If you want to create a linear or radial gradient as background or border, check our [CSS Gradient Generator](#).

Hey! You found this booklet interesting? Support Converting Colors with the new Membership Option!

The pro membership hides all ads, plus gives you double the colors in the color bucket, and more awesome pro features!

[Learn more, Memberships starting at \\$2.50/m!](#)

**Follow me
on Twitter!**

@ConvertingColor