

Converting Colors

XYZ(55.0911, 54.0606, 59.8327)

Have a look what the booklet for
XYZ(55.0911, 54.0606, 59.8327)
contains.

XYZ(55.0984, 53.9490, 59.7338)	3
<i>Conversions</i>	4
<i>Details</i>	6
<i>Harmonies</i>	12
<i>Previews</i>	24
<i>Color Blindness Simulation</i>	28
<i>CSS Examples</i>	31

Color

**XYZ(55.0984, 53.9490,
59.7338)**

Conversions

Conversions Part 1

Format	Color
Hex	D4BCC4
RGB	212, 188, 196
RGB Percent	83%, 74%, 77%
CMY	0.1686, 0.2627, 0.2314
CMYK	0.00, 0.11, 0.08, 0.17
HSL	340°, 22%, 78%
HSV	340°, 11%, 83%
XYZ	55.0984, 53.9490, 59.7338
YIQ	196.0880, 11.7360, 7.5760

Conversions

Conversions Part 2

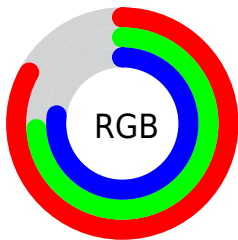
Format	Color
R _Y B	212, 188, 196
Decimal	13941956
CIE Lab	78.43, 9.87, -0.91
CIE LCh	78, 9.912, 354.722
Yxy	53.9490, 0.3264, 0.3196
Android (android.graphics.Color)	4292132036 (0xFFD4BCC4)
YUV	196.0880, -0.0434, 13.9548
Hunter-Lab	73.4500, 5.3641, 3.1969

Details

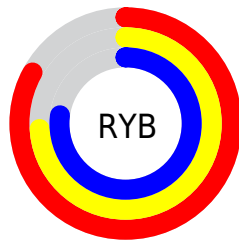
The XYZ color **55.0984, 53.9490, 59.7338** is a light color, and the websafe version is hex **CCCCCC**. A complement of this color would be **55.1837, 62.1393, 66.2153**, and the grayscale version is **52.5187, 55.2538, 60.1714**.

A 20% lighter version of the original color is **91.3203, 93.0532, 106.0765**, and **27.4511, 26.4490, 29.2495** is the 20% darker color. If you saturate the color by 10%, you get **49.3643, 44.9351, 50.2549**, and if you desaturate by 10%, it is **61.6524, 64.3588, 70.2352**.

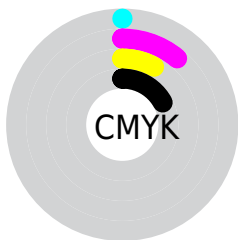
Distribution



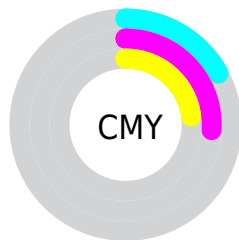
- Red (83%)
- Green (74%)
- Blue (77%)



- Red (83%)
- Yellow (74%)
- Blue (77%)



- Cyan (0%)
- Magenta (11%)
- Yellow (8%)
- Black (17%)



- Cyan (17%)
- Magenta (26%)
- Yellow (23%)

Brightness & Saturation Gradients

These gradients show how the XYZ color 55.0984, 53.9490, 59.7338 changes by changing the brightness by 10 percent. The first figure shows a shift by +10% for each color and the second figure -10%.

Similar to the brightness gradients but the following saturation gradients show a change of the XYZ color 55.0984, 53.9490, 59.7338 by changing the saturation by 10% instead.

■ 55.0984, 53.9490,
59.7338

■ 55.0984, 53.9490,
59.7338

396.4152,
401.9155, 441.3932

■ 39.7147, 38.5609,
42.7802

■ 96.8326, 95.9994,
105.9830

■ 27.4994, 26.4183,
29.3826

123.9138,
123.4304, 136.1157

■ 18.0871, 17.1368,
19.1224

155.6248,
155.6445, 171.4785

■ 11.1126, 10.3321,
11.5810

192.3310,
193.0262, 212.4900

■ 6.2105, 5.6197,
6.3400

234.3978,
235.9597, 259.5686

■ 3.0154, 2.6152,
2.9808

282.1905,

■ 1.1619, 0.9343,

284.8295, 313.1331

1.0848

336.0745,
340.0200, 373.6017

■ 0.0760, 0.0000,
0.0000

■ 0.0000, 0.0000,
0.0000

■ 55.0984, 53.9490,
59.7338

■ 55.0984, 53.9490,
59.7338

■ 49.3643, 44.9351,
50.2549

■ 61.6524, 64.3588,
70.2352

■ 44.4125, 37.2505,
41.7635

■ 69.0529, 76.2132,
81.7859

■ 40.2092, 30.8338,
34.2276

■ 77.3309, 89.5674,
94.4158

■ 36.7162, 25.6160,
27.6118

■ 80.5686, 92.5800,
106.1707

■ 33.8917, 21.5214,
21.8786

■ 80.9617, 92.7372,
108.2407

■ 31.6896, 18.4657,
16.9875

■ 30.0573, 16.3523,
12.8944

■ 28.9328, 15.0663,
9.5502

■ 28.2777, 14.4476,
7.2002

Harmonies

Analogous

The Analogous color harmony consists of three colors that are next to each other on the color wheel.



54.3963, 53.9490, 65.1581



55.0984, 53.9490, 59.7338



54.7556, 53.9490, 54.3676

Triad

The Triadic color harmony groups three colors that are evenly spaced from another and form a triangle on the color wheel.



55.0984, 53.9490, 59.7338



49.7261, 53.9490, 49.5248



49.1436, 53.9490, 67.9423

Complementary

The Complementary color scheme is a pair of colors which are on the opposite of each other on the color wheel.



55.0984, 53.9490, 59.7338



55.1837, 62.1393, 66.2153

Split Complementary

Split-complementary colors differ from the complementary color scheme. The scheme consists of three colors, the original color and two neighbors of the complement color.



47.9488, 53.9490, 63.3434



55.0984, 53.9490, 59.7338



48.2791, 53.9490, 52.7602

Square

The Square scheme is like the rectangle color scheme, but the four colors are evenly spaced on the color wheel.



55.0984, 53.9490, 59.7338



51.6223, 53.9490, 48.6925



47.6363, 53.9490, 57.7598



50.9331, 53.9490, 70.0854

Rectangle

The Rectangle color scheme consists of four colors that form a rectangle on the color wheel.



55.0984, 53.9490, 59.7338



53.9850, 53.9490, 51.5106



47.6363, 53.9490, 57.7598



48.6609, 53.9490, 66.6188

Sweetspot

The Sweet Spot groups the original color and five complimentary colors.



55.0999, 53.9514, 59.7350



91.8474, 94.8916, 103.8347



54.7706, 53.5598, 69.7394



19.4802, 20.0258, 21.9404



0.0000, 0.0000, 0.0000



20.3446, 21.4041, 23.3091

Same Dimension

The Same Dimension uses a secret algorithm to generate beautiful new colors.



55.0999, 53.9514, 59.7350



81.1014, 77.8604, 86.5010



55.0799, 55.3294, 55.3564



12.5922, 12.4884, 13.7930



17.4988, 8.9358, 4.6647



1.0933, 0.5541, 0.4808

Inverse Universe

The Inverse Universe completely reimagines the original color for something new.



55.0999, 53.9514, 59.7350



81.1014, 77.8604, 86.5010



55.1804, 60.5581, 71.0686



12.5922, 12.4884, 13.7930



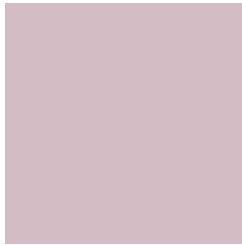
17.4988, 8.9358, 4.6647



1.0933, 0.5541, 0.4808

Previews

White Background



This preview shows how the XYZ color 55.0984, 53.9490, 59.7338 looks on a white background.

Color Contrast Check

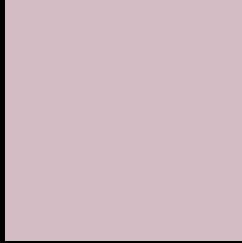
Large Text (above 18pt) WCAG AA × Fail

Any Text WCAG AA × Fail

Large Text (above 18pt) WCAG AAA × Fail

Any Text WCAG AAA × Fail

Black Background



This preview shows how the XYZ color 55.0984, 53.9490, 59.7338 looks on a black background.

Color Contrast Check

Large Text (above 18pt) WCAG AA ✓ Pass

Any Text WCAG AA ✓ Pass

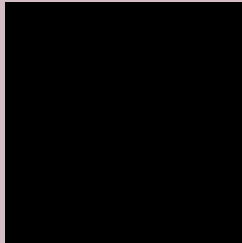
Large Text (above 18pt) WCAG AAA ✓ Pass

Any Text WCAG AAA ✓ Pass

If you want to check with other color combinations, try the [Color Contrast Checker](#).

XYZ 55.0984, 53.9490, 59.7338

Background



This preview shows how black text looks on a background with the XYZ color 55.0984, 53.9490, 59.7338.



This preview shows how white text looks on a background with the XYZ color 55.0984, 53.9490,

Color Blindness Simulation

Color vision deficiency is a very complex topic, and I could not describe the different causes any better than Wikipedia does, so if you want to learn more, you should check out their [article about color blindness](#).

Dichromacy



Original Color

55.0984, 53.9490, 59.7338

Protanopia

52.1437, 53.9992, 61.7075

Deuteranopia

55.0984, 53.9490, 59.7338



Tritanopia

55.8716, 53.9510, 63.3460

Trichromacy



Original Color

55.0984, 53.9490, 59.7338

Protanomaly

53.1810, 53.8954, 61.0260

Deuteranomaly

55.0984, 53.9490, 59.7338

Tritanomaly

55.6362, 53.8569, 62.1067

Monochromacy



Original Color

55.0984, 53.9490, 59.7338

Achromatopsia

52.4687, 55.2011, 60.1140

Achromatomaly

53.3909, 54.6820, 59.9652

CSS Examples

Text

The CSS property to change the color of the text to XYZ 55.0984, 53.9490, 59.7338 is called "color". The color property can be set on classes, ids or directly on the HTML element.

This example shows how text in the color rgb(212, 188, 196) looks like.

```
.text, #text, p{  
    color:rgb(212, 188, 196)  
}
```

If you want to add a text shadow in that color use the text-shadow property, you can generate a text shadow directly with our [CSS Text Shadow Generator](#).

Here you see how black text with a 4 pixel rgb(212, 188, 196) colored shadow looks like.

```
.shadow{ text-shadow: 4px 4px 2px rgb(212, 188, 196) }
```

Border

The CSS property to change the border of an element to XYZ 55.0984, 53.9490, 59.7338 is called "border". The border property can be set on classes, ids or directly on the HTML element.

This example shows the color as border, it can be applied via the CSS property "border" or "border-color".

```
.border, #border, table{ border:4px solid rgb(212, 188, 196) }
```


If only the border color should be changed use the property `border-color`.

```
.border{ border-color:rgb(212, 188, 196) }
```

If you want to add a box shadow in that color use:

Here you see how a box with a 4 pixel `rgb(212, 188, 196)` colored shadow looks like.

```
.boxshadow{ -moz-box-shadow:4px 4px 4px  
4px rgb(212, 188, 196); -webkit-box-  
shadow:4px 4px 4px 4px rgb(212, 188, 196);  
box-shadow:4px 4px 4px 4px rgb(212, 188,  
196) }
```

Background

The CSS property to change the background color of an element to XYZ 55.0984, 53.9490, 59.7338 is called "background". The background property can be set on classes, ids or directly on the HTML element.

```
.background, #background, body{  
background: rgb(212, 188, 196) }
```

If only the background color should be changed can be used:

```
.background{ background-color: rgb(212,  
188, 196) }
```

This example shows the color as background, it is applied via the CSS property "background".

To optimize and compress your CSS code, you can use our [online CSS compressor and optimizer](#) based on csstidy. If you want to create a linear or radial gradient as background or border, check our [CSS Gradient Generator](#).

Hey! You found this booklet interesting? Support Converting Colors with the new Membership Option!

The pro membership hides all ads, plus gives you double the colors in the color bucket, and more awesome pro features!

[Learn more, Memberships starting at \\$2.50/m!](#)

**Follow me
on Twitter!**

@ConvertingColor