

# Converting Colors

XYZ(55.0960, 52.9078, 49.9562)

Have a look what the booklet for  
XYZ(55.0960, 52.9078, 49.9562)  
contains.

<b>XYZ(55.0960, 52.9078, 49.9562)</b> .....	3
<b><i>Conversions</i></b> .....	4
<b><i>Details</i></b> .....	6
<b><i>Harmonies</i></b> .....	12
<b><i>Previews</i></b> .....	24
<b><i>Color Blindness Simulation</i></b> .....	28
<b><i>CSS Examples</i></b> .....	31

# Color

**XYZ(55.0960, 52.9078,  
49.9562)**

# Conversions

## Conversions Part 1

Format	Color
Hex	DDB8B3
RGB	221, 184, 179
RGB Percent	87%, 72%, 70%
CMY	0.1333, 0.2784, 0.2980
CMYK	0.00, 0.17, 0.19, 0.13
HSL	7°, 38%, 78%
HSV	7°, 19%, 87%
XYZ	55.0960, 52.9078, 49.9562
YIQ	194.4930, 23.6570, 6.2890

# Conversions

## Conversions Part 2

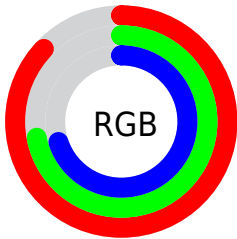
Format	Color
R <sub>Y</sub> B	221, 185, 179
Decimal	14530739
CIE Lab	77.82, 12.50, 7.50
CIE LCh	78, 14.580, 30.979
Yxy	52.9078, 0.3488, 0.3349
Android (android.graphics.Color)	4292720819 (0xFFDDB8B3)
YUV	194.4930, -7.6380, 23.2466
Hunter-Lab	72.7377, 7.9157, 10.1961

# Details

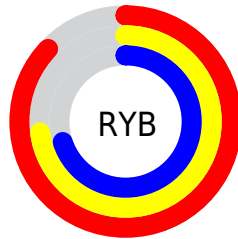
The XYZ color **55.0960, 52.9078, 49.9562** is a light color, and the websafe version is hex **FFCCCC**. A complement of this color would be **56.1970, 63.9145, 77.7820**, and the grayscale version is **51.6056, 54.2931, 59.1252**.

A 20% lighter version of the original color is **87.3955, 89.5783, 91.2814**, and **27.3992, 25.7383, 23.2626** is the 20% darker color. If you saturate the color by 10%, you get **49.2684, 44.5472, 37.8559**, and if you desaturate by 10%, it is **61.8412, 62.5294, 64.1309**.

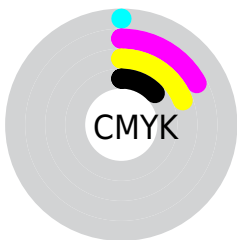
# Distribution



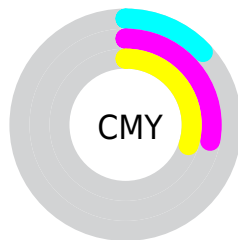
- Red (87%)
- Green (72%)
- Blue (70%)



- Red (87%)
- Yellow (73%)
- Blue (70%)



- Cyan (0%)
- Magenta (17%)
- Yellow (19%)
- Black (13%)




- Cyan (13%)
- Magenta (28%)
- Yellow (30%)


# Brightness & Saturation Gradients

These gradients show how the XYZ color 55.0960, 52.9078, 49.9562 changes by changing the brightness by 10 percent. The first figure shows a shift by +10% for each color and the second figure -10%.


Similar to the brightness gradients but the following saturation gradients show a change of the XYZ color 55.0960, 52.9078, 49.9562 by changing the saturation by 10% instead.




 55.0960, 52.9078,  
49.9562

 55.0960, 52.9078,  
49.9562


396.4062,  
397.9313, 403.2248

 39.7127, 37.7292,  
35.0077


 96.8291, 94.4687,  
91.5056

 27.4979, 25.7726,  
23.3852


123.9096,  
121.6197, 118.9436

 18.0860, 16.6536,  
14.6702


155.6200,  
153.5304, 151.3817

 11.1118, 9.9878,  
8.4442

192.3255,  
190.5850, 189.2387

 6.2099, 5.3909,  
4.2887

234.3915,  
233.1680, 232.9329

 3.0150, 2.4784,  
1.7850

282.1834,

 1.1617, 0.8658,

281.6638, 282.8830

0.4180

336.0665,  
336.4568, 339.5074

■ 0.0758, 0.0000,  
0.0000

■ 0.0000, 0.0000,  
0.0000

■ 55.0960, 52.9078,  
49.9562

■ 55.0960, 52.9078,  
49.9562

■ 49.2684, 44.5472,  
37.8559

■ 61.8412, 62.5294,  
64.1309

■ 44.3145, 37.3886,  
27.7295

■ 69.5370, 73.4538,  
80.4676

■ 40.1932, 31.3785,  
19.4730

■ 78.2198, 85.7297,  
99.0527

■ 36.8584, 26.4571,  
12.9716

■ 83.6290, 94.1123,  
108.3655

■ 34.2593, 22.5589,  
8.0980

■ 32.3394, 19.6112,  
4.7073

■ 31.0332, 17.5319,  
2.6290

■ 30.2527, 16.2204,  
1.5996

■ 30.1958, 16.1258,  
1.5211

# Harmonies

## Analogous

The Analogous color harmony consists of three colors that are next to each other on the color wheel.



55.9238, 52.9078, 57.3420



55.0960, 52.9078, 49.9562



52.9723, 52.9078, 45.0321

# Triad

The Triadic color harmony groups three colors that are evenly spaced from another and form a triangle on the color wheel.



55.0960, 52.9078, 49.9562



45.6796, 52.9078, 50.3764



50.3802, 52.9078, 74.6277

# Complementary

The Complementary color scheme is a pair of colors which are on the opposite of each other on the color wheel.



55.0960, 52.9078, 49.9562



56.1970, 63.9145, 77.7820

# Split Complementary

Split-complementary colors differ from the complementary color scheme. The scheme consists of three colors, the original color and two neighbors of the complement color.



47.6945, 52.9078, 72.3301



55.0960, 52.9078, 49.9562



45.0428, 52.9078, 57.8741

# Square

The Square scheme is like the rectangle color scheme, but the four colors are evenly spaced on the color wheel.



55.0960, 52.9078, 49.9562



47.5394, 52.9078, 45.2582



45.7668, 52.9078, 66.0029



53.1391, 52.9078, 72.0209



# Rectangle

The Rectangle color scheme consists of four colors that form a rectangle on the color wheel.



55.0960, 52.9078, 49.9562



51.1449, 52.9078, 43.5524



45.7668, 52.9078, 66.0029



49.4393, 52.9078, 74.4016

# Sweetspot

The Sweet Spot groups the original color and five complimentary colors.



55.0974, 52.9102, 49.9573



88.5339, 90.7541, 95.0557



58.3471, 52.5761, 72.1071



18.8044, 19.2183, 20.0377



0.0000, 0.0000, 0.0000



20.3446, 21.4041, 23.3091



# Same Dimension

The Same Dimension uses a secret algorithm to generate beautiful new colors.



55.0974, 52.9102, 49.9573



72.6795, 68.1331, 61.7540



59.7635, 62.2423, 51.5127



13.1804, 13.3001, 13.5981



17.5841, 9.4538, 0.8980



1.1816, 0.6972, 0.0723

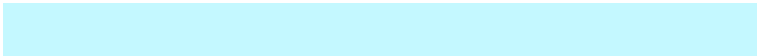


# Inverse Universe

The Inverse Universe completely reimagines the original color for something new.



56.1970, 63.9145, 77.7820



74.4773, 86.1451, 107.3100



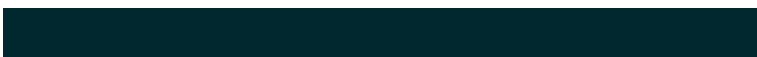
51.1798, 53.8799, 76.1095



13.3056, 14.5509, 16.7595



18.9304, 25.7303, 43.7071

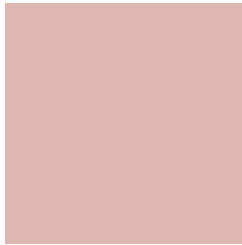


1.2646, 1.7433, 2.8443



# Previews

## White Background



This preview shows how the XYZ color 55.0960, 52.9078, 49.9562 looks on a white background.

## Color Contrast Check

Large Text (above 18pt) WCAG AA × Fail

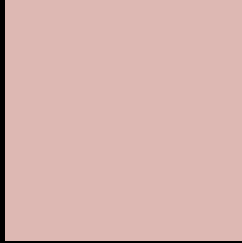
Any Text WCAG AA × Fail

Large Text (above 18pt) WCAG AAA × Fail

Any Text WCAG AAA × Fail



# Black Background



This preview shows how the XYZ color 55.0960, 52.9078, 49.9562 looks on a black background.

## Color Contrast Check

Large Text (above 18pt) WCAG AA ✓ Pass

Any Text WCAG AA ✓ Pass

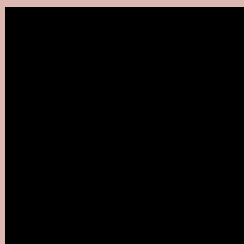
Large Text (above 18pt) WCAG AAA ✓ Pass

Any Text WCAG AAA ✓ Pass

If you want to check with other color combinations, try the [Color Contrast Checker](#).

**XYZ 55.0960, 52.9078, 49.9562**

## **Background**



This preview shows how black text looks on a background with the XYZ color 55.0960, 52.9078, 49.9562.



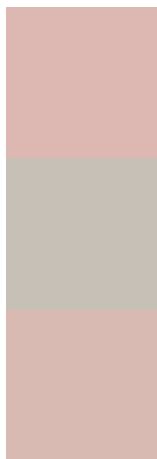
This preview shows how white text looks on a background with the XYZ color 55.0960, 52.9078,

49.9562.

# Color Blindness Simulation

Color vision deficiency is a very complex topic, and I could not describe the different causes any better than Wikipedia does, so if you want to learn more, you should check out their [article about color blindness](#).

## Dichromacy



### Original Color

55.0960, 52.9078, 49.9562

### Protanopia

50.6856, 53.1239, 52.3823

### Deuteranopia

54.0145, 52.9714, 50.0255



## Tritanopia

56.9191, 52.7212, 59.4008

# Trichromacy



## Original Color

55.0960, 52.9078, 49.9562

## Protanomaly

52.0947, 52.8944, 51.7199

## Deuteranomaly

54.3991, 52.8580, 49.9833

## Tritanomaly

56.1464, 52.7032, 55.9287

# Monochromacy



## Original Color

55.0960, 52.9078, 49.9562

## Achromatopsia

51.2775, 53.9479, 58.7493

## Achromatomaly

52.5006, 53.3384, 55.6724

# CSS Examples

## Text

The CSS property to change the color of the text to XYZ 55.0960, 52.9078, 49.9562 is called "color". The color property can be set on classes, ids or directly on the HTML element.

This example shows how text in the color `rgb(221, 184, 179)` looks like.

```
.text, #text, p{  
    color:rgb(221, 184, 179)  
}
```

If you want to add a text shadow in that color use the text-shadow property, you can generate a text shadow directly with our [CSS Text Shadow Generator](#).

Here you see how black text with a 4 pixel rgb(221, 184, 179) colored shadow looks like.

```
.shadow{ text-shadow: 4px 4px 2px rgb(221, 184, 179) }
```

## Border

The CSS property to change the border of an element to XYZ 55.0960, 52.9078, 49.9562 is called "border". The border property can be set on classes, ids or directly on the HTML element.

This example shows the color as border, it can be applied via the CSS property "border" or "border-color".

```
.border, #border, table{ border:4px solid rgb(221, 184, 179) }
```



If only the border color should be changed use the property `border-color`.

```
.border{ border-color:rgb(221, 184, 179) }
```

If you want to add a box shadow in that color use:

Here you see how a box with a 4 pixel `rgb(221, 184, 179)` colored shadow looks like.

```
.boxshadow{ -moz-box-shadow:4px 4px 4px 4px rgb(221, 184, 179); -webkit-box-shadow:4px 4px 4px 4px rgb(221, 184, 179); box-shadow:4px 4px 4px 4px rgb(221, 184, 179) }
```

# Background

The CSS property to change the background color of an element to XYZ 55.0960, 52.9078, 49.9562 is called "background". The background property can be set on classes, ids or directly on the HTML element.

```
.background, #background, body{  
background: rgb(221, 184, 179) }
```

If only the background color should be changed can be used:

```
.background{ background-color: rgb(221,  
184, 179) }
```

This example shows the color as background, it is applied via the CSS property "background".

To optimize and compress your CSS code, you can use our [online CSS compressor and optimizer](#) based on csstidy. If you want to create a linear or radial gradient as background or border, check our [CSS Gradient Generator](#).

Hey! You found this booklet interesting? Support Converting Colors with the new Membership Option!

The pro membership hides all ads, plus gives you double the colors in the color bucket, and more awesome pro features!

**[Learn more, Memberships starting at \\$2.50/m!](#)**

**Follow me  
on Twitter!**

@ConvertingColor