

Converting Colors

XYZ(55.1196, 54.1278, 48.9091)

Have a look what the booklet for
XYZ(55.1196, 54.1278, 48.9091)
contains.

XYZ(55.1324, 54.2008, 49.1510)	3
<i>Conversions</i>	4
<i>Details</i>	6
<i>Harmonies</i>	12
<i>Previews</i>	24
<i>Color Blindness Simulation</i>	28
<i>CSS Examples</i>	31

Color

**XYZ(55.1324, 54.2008,
49.1510)**

Conversions

Conversions Part 1

Format	Color
Hex	DBBCB1
RGB	219, 188, 177
RGB Percent	86%, 74%, 69%
CMY	0.1412, 0.2627, 0.3059
CMYK	0.00, 0.14, 0.19, 0.14
HSL	16°, 37%, 78%
HSV	16°, 19%, 86%
XYZ	55.1324, 54.2008, 49.1510
YIQ	196.0150, 22.0070, 3.1510

Conversions

Conversions Part 2

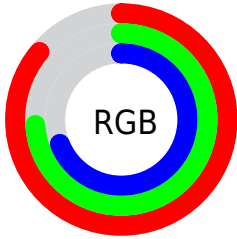
Format	Color
R _Y B	219, 192, 177
Decimal	14400689
CIE Lab	78.58, 9.32, 9.64
CIE LCh	79, 13.415, 45.969
Yxy	54.2008, 0.3479, 0.3420
Android (android.graphics.Color)	4292590769 (0xFFDBBCB1)
YUV	196.0150, -9.3744, 20.1578
Hunter-Lab	73.6212, 4.8355, 11.9516

Details

The XYZ color **55.1324, 54.2008, 49.1510** is a light color, and the websafe version is hex **FFCCCC**. A complement of this color would be **53.4731, 59.5718, 75.6983**, and the grayscale version is **52.5247, 55.2601, 60.1783**.

A 20% lighter version of the original color is **88.2987, 91.8446, 90.1647**, and **27.6119, 26.6757, 22.7624** is the 20% darker color. If you saturate the color by 10%, you get **49.8612, 46.8755, 37.4749**, and if you desaturate by 10%, it is **61.1436, 62.4445, 62.8033**.

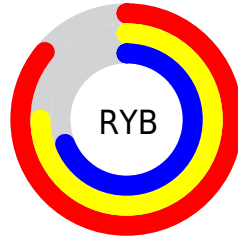
Distribution



Red (86%)

Green (74%)

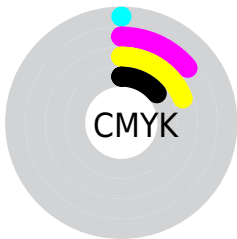
Blue (69%)



Red (86%)

Yellow (75%)

Blue (69%)

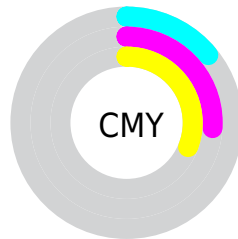


Cyan (0%)

Magenta (14%)

Yellow (19%)

Black (14%)



Cyan (14%)

Magenta (26%)

Yellow (31%)

Brightness & Saturation Gradients

These gradients show how the XYZ color 55.1324, 54.2008, 49.1510 changes by changing the brightness by 10 percent. The first figure shows a shift by +10% for each color and the second figure -10%.

Similar to the brightness gradients but the following saturation gradients show a change of the XYZ color 55.1324, 54.2008, 49.1510 by changing the saturation by 10% instead.

■ 55.1324, 54.2008,
49.1510

■ 55.1324, 54.2008,
49.1510

396.5419,
402.8753, 399.9760

■ 39.7420, 38.7622,
34.3728

■ 96.8821, 96.3690,
90.2990

■ 27.5208, 26.5748,
22.9005

123.9721,
123.8674, 117.5059

■ 18.1033, 17.2541,
14.3154

155.6927,
156.1546, 149.6928

■ 11.1243, 10.4159,
8.1991

192.4092,
193.6149, 187.2782

■ 6.2184, 5.6755,
4.1330

234.4871,
236.6327, 230.6807

■ 3.0203, 2.6488,
1.6986

282.2916,

■ 1.1645, 0.9513,

285.5924, 280.3188

0.3598

336.1880,
340.8785, 336.6111

■ 0.0781, 0.0000,
0.0000

■ 0.0000, 0.0000,
0.0000

■ 55.1324, 54.2008,
49.1510

■ 55.1324, 54.2008,
49.1510

■ 49.8612, 46.8755,
37.4749

■ 61.1436, 62.4445,
62.8033

■ 45.2961, 40.4292,
27.6796

■ 67.9181, 71.6296,
78.5143

■ 41.4074, 34.8304,
19.6666

■ 75.4834, 81.7877,
96.3661

■ 38.1609, 30.0428,
13.3273

■ 82.2797, 92.3124,
108.0892

■ 35.5198, 26.0274,
8.5411

■ 83.0235, 93.8001,
108.3372

■ 33.4427, 22.7420,
5.1708

■ 31.8826, 20.1394,
3.0548

■ 30.7724, 18.1621,
1.9355

■ 30.6955, 18.0240,
1.8611

Harmonies

Analogous

The Analogous color harmony consists of three colors that are next to each other on the color wheel.



56.5619, 54.2008, 55.0984



55.1324, 54.2008, 49.1510



52.7591, 54.2008, 45.9830

Triad

The Triadic color harmony groups three colors that are evenly spaced from another and form a triangle on the color wheel.



55.1324, 54.2008, 49.1510



46.7382, 54.2008, 55.5543



52.9281, 54.2008, 74.1548

Complementary

The Complementary color scheme is a pair of colors which are on the opposite of each other on the color wheel.



55.1324, 54.2008, 49.1510



53.4731, 59.5718, 75.6983

Split Complementary

Split-complementary colors differ from the complementary color scheme. The scheme consists of three colors, the original color and two neighbors of the complement color.



50.2931, 54.2008, 74.3034



55.1324, 54.2008, 49.1510



46.7799, 54.2008, 63.1139

Square

The Square scheme is like the rectangle color scheme, but the four colors are evenly spaced on the color wheel.



55.1324, 54.2008, 49.1510



47.9457, 54.2008, 49.4601



48.0618, 54.2008, 70.1186



55.2598, 54.2008, 69.7284

Rectangle

The Rectangle color scheme consists of four colors that form a rectangle on the color wheel.



55.1324, 54.2008, 49.1510



50.9892, 54.2008, 45.6826



48.0618, 54.2008, 70.1186



52.0469, 54.2008, 74.7188

Sweetspot

The Sweet Spot groups the original color and five complimentary colors.



55.1339, 54.2032, 49.1521



89.1867, 92.0596, 95.2732



56.3829, 51.0837, 66.8864



18.9582, 19.5259, 20.0889



0.0000, 0.0000, 0.0000



20.3446, 21.4041, 23.3091

Same Dimension

The Same Dimension uses a secret algorithm to generate beautiful new colors.



55.1339, 54.2032, 49.1521



74.7164, 72.2068, 62.4330



59.8277, 63.5908, 50.7167



13.3321, 13.6035, 13.6486



18.2771, 10.8398, 1.1290



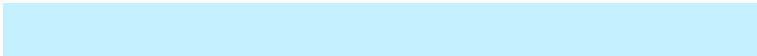
1.2540, 0.8421, 0.0964

Inverse Universe

The Inverse Universe completely reimagines the original color for something new.



53.4731, 59.5718, 75.6983



71.9584, 81.1073, 106.4704



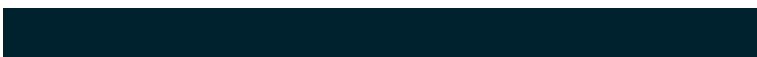
48.7949, 50.2155, 74.1389



13.1412, 14.2221, 16.7047



15.2967, 18.4628, 42.4959



1.0596, 1.3333, 2.7760

Previews

White Background



This preview shows how the XYZ color 55.1324, 54.2008, 49.1510 looks on a white background.

Color Contrast Check

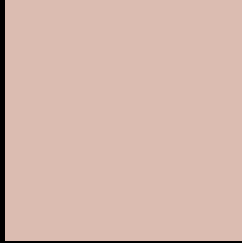
Large Text (above 18pt) WCAG AA × Fail

Any Text WCAG AA × Fail

Large Text (above 18pt) WCAG AAA × Fail

Any Text WCAG AAA × Fail

Black Background



This preview shows how the XYZ color 55.1324, 54.2008, 49.1510 looks on a black background.

Color Contrast Check

Large Text (above 18pt) WCAG AA ✓ Pass

Any Text WCAG AA ✓ Pass

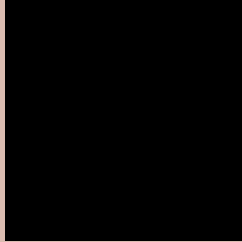
Large Text (above 18pt) WCAG AAA ✓ Pass

Any Text WCAG AAA ✓ Pass

If you want to check with other color combinations, try the [Color Contrast Checker](#).

XYZ 55.1324, 54.2008, 49.1510

Background



This preview shows how black text looks on a background with the XYZ color 55.1324, 54.2008, 49.1510.



This preview shows how white text looks on a background with the XYZ color 55.1324, 54.2008,

Color Blindness Simulation

Color vision deficiency is a very complex topic, and I could not describe the different causes any better than Wikipedia does, so if you want to learn more, you should check out their [article about color blindness](#).

Dichromacy



Original Color

55.1324, 54.2008, 49.1510

Protanopia

51.6174, 54.2964, 50.9397

Deuteranopia

55.4342, 54.3564, 49.1651



Tritanopia

57.7820, 54.3510, 61.4782

Trichromacy



Original Color

55.1324, 54.2008, 49.1510

Protanomaly

52.9987, 54.3638, 50.3478

Deuteranomaly

55.4342, 54.3564, 49.1651

Tritanomaly

56.7817, 54.2516, 56.7691

Monochromacy



Original Color

55.1324, 54.2008, 49.1510

Achromatopsia

52.4687, 55.2011, 60.1140

Achromatomaly

53.1571, 54.6514, 55.8912

CSS Examples

Text

The CSS property to change the color of the text to XYZ 55.1324, 54.2008, 49.1510 is called "color". The color property can be set on classes, ids or directly on the HTML element.

This example shows how text in the color `rgb(219, 188, 177)` looks like.

```
.text, #text, p{  
    color:rgb(219, 188, 177)  
}
```

If you want to add a text shadow in that color use the text-shadow property, you can generate a text shadow directly with our [CSS Text Shadow Generator](#).

Here you see how black text with a 4 pixel rgb(219, 188, 177) colored shadow looks like.

```
.shadow{ text-shadow: 4px 4px 2px rgb(219, 188, 177) }
```

Border

The CSS property to change the border of an element to XYZ 55.1324, 54.2008, 49.1510 is called "border". The border property can be set on classes, ids or directly on the HTML element.

This example shows the color as border, it can be applied via the CSS property "border" or "border-color".

```
.border, #border, table{ border:4px solid rgb(219, 188, 177) }
```


If only the border color should be changed use the property `border-color`.

```
.border{ border-color:rgb(219, 188, 177) }
```

If you want to add a box shadow in that color use:

Here you see how a box with a 4 pixel `rgb(219, 188, 177)` colored shadow looks like.

```
.boxshadow{ -moz-box-shadow:4px 4px 4px  
4px rgb(219, 188, 177); -webkit-box-  
shadow:4px 4px 4px 4px rgb(219, 188, 177);  
box-shadow:4px 4px 4px 4px rgb(219, 188,  
177) }
```

Background

The CSS property to change the background color of an element to XYZ 55.1324, 54.2008, 49.1510 is called "background". The background property can be set on classes, ids or directly on the HTML element.

```
.background, #background, body{  
background: rgb(219, 188, 177) }
```

If only the background color should be changed can be used:

```
.background{ background-color: rgb(219,  
188, 177) }
```

This example shows the color as background, it is applied via the CSS property "background".

To optimize and compress your CSS code, you can use our [online CSS compressor and optimizer](#) based on csstidy. If you want to create a linear or radial gradient as background or border, check our [CSS Gradient Generator](#).

Hey! You found this booklet interesting? Support Converting Colors with the new Membership Option!

The pro membership hides all ads, plus gives you double the colors in the color bucket, and more awesome pro features!

[Learn more, Memberships starting at \\$2.50/m!](#)

**Follow me
on Twitter!**

@ConvertingColor