

# Converting Colors

XYZ(55.1611, 54.3564, 54.8325)

Have a look what the booklet for  
XYZ(55.1611, 54.3564, 54.8325)  
contains.

<b>XYZ(55.1916, 54.4301, 54.6109)</b> .....	3
<b><i>Conversions</i></b> .....	4
<b><i>Details</i></b> .....	6
<b><i>Harmonies</i></b> .....	12
<b><i>Previews</i></b> .....	24
<b><i>Color Blindness Simulation</i></b> .....	28
<b><i>CSS Examples</i></b> .....	31

# Color

**XYZ(55.1916, 54.4301,  
54.6109)**

# Conversions

## Conversions Part 1

<b>Format</b>	<b>Color</b>
Hex	D7BDBB
RGB	215, 189, 187
RGB Percent	84%, 74%, 73%
CMY	0.1569, 0.2588, 0.2667
CMYK	0.00, 0.12, 0.13, 0.16
HSL	4°, 26%, 79%
HSV	4°, 13%, 84%
XYZ	55.1916, 54.4301, 54.6109
YIQ	196.5460, 16.1380, 4.8900

# Conversions

## Conversions Part 2

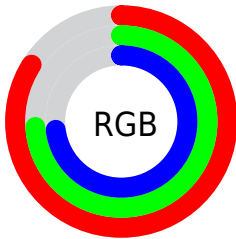
Format	Color
R <sub>Y</sub> B	215, 189, 187
Decimal	14138811
CIE Lab	78.71, 8.90, 4.39
CIE LCh	79, 9.924, 26.267
Yxy	54.4301, 0.3361, 0.3314
Android (android.graphics.Color)	4292328891 (0xFFD7BDBB)
YUV	196.5460, -4.7062, 16.1842
Hunter-Lab	73.7768, 4.4246, 7.7562

# Details

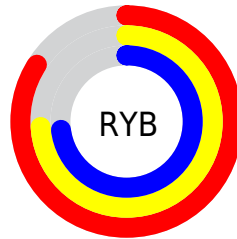
The XYZ color **55.1916, 54.4301, 54.6109** is a light color, and the websafe version is hex **CCCCCC**. A complement of this color would be **56.5533, 63.0585, 73.4815**, and the grayscale version is **52.8192, 55.5699, 60.5156**.

A 20% lighter version of the original color is **90.0701, 93.0359, 98.0045**, and **27.6044, 26.8031, 26.2729** is the 20% darker color. If you saturate the color by 10%, you get **49.0580, 45.5743, 42.0481**, and if you desaturate by 10%, it is **62.2639, 64.6106, 69.1880**.

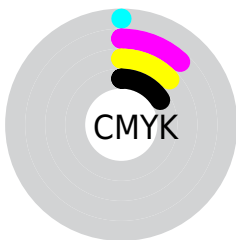
# Distribution



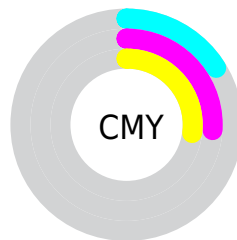
- Red (84%)
- Green (74%)
- Blue (73%)



- Red (84%)
- Yellow (74%)
- Blue (73%)



- Cyan (0%)
- Magenta (12%)
- Yellow (13%)
- Black (16%)




- Cyan (16%)
- Magenta (26%)
- Yellow (27%)


# Brightness & Saturation Gradients

These gradients show how the XYZ color 55.1916, 54.4301, 54.6109 changes by changing the brightness by 10 percent. The first figure shows a shift by +10% for each color and the second figure -10%.


Similar to the brightness gradients but the following saturation gradients show a change of the XYZ color 55.1916, 54.4301, 54.6109 by changing the saturation by 10% instead.

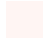



 55.1916, 54.4301,  
54.6109

 55.1916, 54.4301,  
54.6109


396.7624,  
403.7480, 421.6756

 39.7896, 38.9456,  
38.6938


 96.9683, 96.7055,  
98.4361

 27.5580, 26.7174,  
26.2156

124.0737,  
124.2651, 127.1812

 18.1315, 17.3611,  
16.7578


155.8110,  
156.6187, 161.0394

 11.1447, 10.4923,  
9.9018

192.5454,  
194.1505, 200.4292

 6.2323, 5.7266,  
5.2292

234.6425,  
237.2449, 245.7692

 3.0288, 2.6795,  
2.3213

282.4674,

 1.1690, 0.9668,

286.2864, 297.4779

0.7431

336.3856,  
341.6593, 355.9739

■ 0.0817, 0.0000,  
0.0000

■ 0.0000, 0.0000,  
0.0000

■ 55.1916, 54.4301,  
54.6109

■ 55.1916, 54.4301,  
54.6109

■ 49.0580, 45.5743,  
42.0481

■ 62.2639, 64.6106,  
69.1880

■ 43.8192, 37.9817,  
31.4077

■ 70.3072, 76.1594,  
85.8588

■ 39.4347, 31.5971,  
22.5960

■ 79.3580, 89.1272,  
104.7027

■ 35.8592, 26.3580,  
15.5098

■ 81.8346, 93.1872,  
108.2815

■ 33.0430, 22.1967,  
10.0359

■ 30.9310, 19.0380,  
6.0476

■ 29.4606, 16.7973,  
3.3989

■ 28.5579, 15.3758,  
1.9146

■ 28.2009, 14.7999,  
1.3703

# Harmonies

## Analogous

The Analogous color harmony consists of three colors that are next to each other on the color wheel.



55.5909, 54.4301, 59.9714



55.1916, 54.4301, 54.6109



53.8577, 54.4301, 50.7260

# Triad

The Triadic color harmony groups three colors that are evenly spaced from another and form a triangle on the color wheel.



55.1916, 54.4301, 54.6109



48.6597, 54.4301, 53.4652



51.4889, 54.4301, 70.7140

# Complementary

The Complementary color scheme is a pair of colors which are on the opposite of each other on the color wheel.



55.1916, 54.4301, 54.6109



56.5533, 63.0585, 73.4815

# Split Complementary

Split-complementary colors differ from the complementary color scheme. The scheme consists of three colors, the original color and two neighbors of the complement color.



49.6673, 54.4301, 68.7125



55.1916, 54.4301, 54.6109



48.0601, 54.4301, 58.5644

# Square

The Square scheme is like the rectangle color scheme, but the four colors are evenly spaced on the color wheel.



55.1916, 54.4301, 54.6109



50.0825, 54.4301, 50.0945



48.4242, 54.4301, 64.1766



53.4218, 54.4301, 69.4918



# Rectangle

The Rectangle color scheme consists of four colors that form a rectangle on the color wheel.



55.1916, 54.4301, 54.6109



52.6350, 54.4301, 49.3767



48.4242, 54.4301, 64.1766



50.8437, 54.4301, 70.3928

# Sweetspot

The Sweet Spot groups the original color and five complimentary colors.



55.1931, 54.4325, 54.6121



90.5039, 93.4663, 99.4969



57.8226, 54.7994, 70.5700



19.1941, 19.7505, 20.9300



0.0000, 0.0000, 0.0000



20.3446, 21.4041, 23.3091



# Same Dimension

The Same Dimension uses a secret algorithm to generate beautiful new colors.



55.1931, 54.4325, 54.6121



78.2469, 75.8127, 74.2616



58.3192, 60.6846, 55.6541



12.4939, 12.5621, 12.9269



16.8962, 8.9095, 0.8292



1.0447, 0.5885, 0.0585

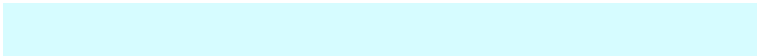


# Inverse Universe

The Inverse Universe completely reimagines the original color for something new.



56.5533, 63.0585, 73.4815



80.6756, 91.2175, 107.9624



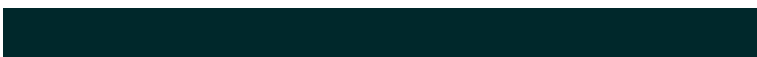
53.2141, 56.3801, 72.3684



12.7126, 13.9486, 15.9598



19.6700, 27.6017, 42.7441



1.2097, 1.7113, 2.5859



# Previews

## White Background



This preview shows how the XYZ color 55.1916, 54.4301, 54.6109 looks on a white background.

## Color Contrast Check

Large Text (above 18pt) WCAG AA × Fail

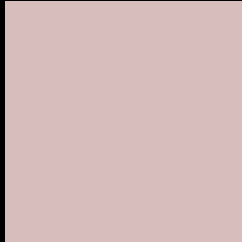
Any Text WCAG AA × Fail

Large Text (above 18pt) WCAG AAA × Fail

Any Text WCAG AAA × Fail



# Black Background



This preview shows how the XYZ color 55.1916, 54.4301, 54.6109 looks on a black background.

## Color Contrast Check

Large Text (above 18pt) WCAG AA ✓ Pass

Any Text WCAG AA ✓ Pass

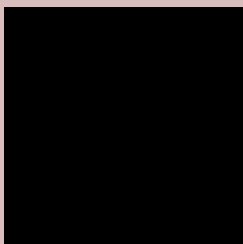
Large Text (above 18pt) WCAG AAA ✓ Pass

Any Text WCAG AAA ✓ Pass

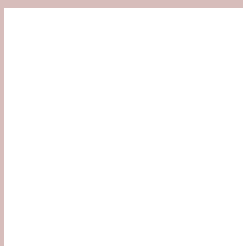
If you want to check with other color combinations, try the [Color Contrast Checker](#).

**XYZ 55.1916, 54.4301, 54.6109**

## **Background**



This preview shows how black text looks on a background with the XYZ color 55.1916, 54.4301, 54.6109.



This preview shows how white text looks on a background with the XYZ color 55.1916, 54.4301,



# Color Blindness Simulation

Color vision deficiency is a very complex topic, and I could not describe the different causes any better than Wikipedia does, so if you want to learn more, you should check out their [article about color blindness](#).

## Dichromacy



### Original Color

55.1916, 54.4301, 54.6109

### Protanopia

52.4055, 54.5806, 56.4882

### Deuteranopia

55.5681, 54.3060, 54.5671



## Tritanopia

56.9282, 54.5094, 62.7793

# Trichromacy



## Original Color

55.1916, 54.4301, 54.6109

## Protanomaly

53.2118, 54.3525, 55.8306

## Deuteranomaly

55.2718, 54.1532, 54.5532

## Tritanomaly

56.2659, 54.5509, 59.7884

# Monochromacy



## Original Color

55.1916, 54.4301, 54.6109

## Achromatopsia

53.0703, 55.8340, 60.8033

## Achromatomaly

53.8193, 55.2712, 58.2839

# CSS Examples

## Text

The CSS property to change the color of the text to XYZ 55.1916, 54.4301, 54.6109 is called "color". The color property can be set on classes, ids or directly on the HTML element.

This example shows how text in the color `rgb(215, 189, 187)` looks like.

```
.text, #text, p{  
    color:rgb(215, 189, 187)  
}
```

If you want to add a text shadow in that color use the text-shadow property, you can generate a text shadow directly with our [CSS Text Shadow Generator](#).

Here you see how black text with a 4 pixel rgb(215, 189, 187) colored shadow looks like.

```
.shadow{ text-shadow: 4px 4px 2px rgb(215, 189, 187) }
```

## Border

The CSS property to change the border of an element to XYZ 55.1916, 54.4301, 54.6109 is called "border". The border property can be set on classes, ids or directly on the HTML element.

This example shows the color as border, it can be applied via the CSS property "border" or "border-color".

```
.border, #border, table{ border:4px solid rgb(215, 189, 187) }
```



If only the border color should be changed use the property `border-color`.

```
.border{ border-color:rgb(215, 189, 187) }
```

If you want to add a box shadow in that color use:

Here you see how a box with a 4 pixel `rgb(215, 189, 187)` colored shadow looks like.

```
.boxshadow{ -moz-box-shadow:4px 4px 4px  
4px rgb(215, 189, 187); -webkit-box-  
shadow:4px 4px 4px 4px rgb(215, 189, 187);  
box-shadow:4px 4px 4px 4px rgb(215, 189,  
187) }
```

# Background

The CSS property to change the background color of an element to XYZ 55.1916, 54.4301, 54.6109 is called "background". The background property can be set on classes, ids or directly on the HTML element.

```
.background, #background, body{  
background: rgb(215, 189, 187) }
```

If only the background color should be changed can be used:

```
.background{ background-color: rgb(215,  
189, 187) }
```

This example shows the color as background, it is applied via the CSS property "background".

To optimize and compress your CSS code, you can use our [online CSS compressor and optimizer](#) based on csstidy. If you want to create a linear or radial gradient as background or border, check our [CSS Gradient Generator](#).

Hey! You found this booklet interesting? Support Converting Colors with the new Membership Option!

The pro membership hides all ads, plus gives you double the colors in the color bucket, and more awesome pro features!

**[Learn more, Memberships starting at \\$2.50/m!](#)**

**Follow me  
on Twitter!**

@ConvertingColor