

Converting Colors

XYZ(55.1650, 54.1105, 53.9912)

Have a look what the booklet for
XYZ(55.1650, 54.1105, 53.9912)
contains.

XYZ(55.1650, 54.1105, 53.9912)	3
<i>Conversions</i>	4
<i>Details</i>	6
<i>Harmonies</i>	12
<i>Previews</i>	24
<i>Color Blindness Simulation</i>	28
<i>CSS Examples</i>	31

Color

**XYZ(55.1650, 54.1105,
53.9912)**

Conversions

Conversions Part 1

Format	Color
Hex	D8BCBA
RGB	216, 188, 186
RGB Percent	85%, 74%, 73%
CMY	0.1529, 0.2627, 0.2706
CMYK	0.00, 0.13, 0.14, 0.15
HSL	4°, 28%, 79%
HSV	4°, 14%, 85%
XYZ	55.1650, 54.1105, 53.9912
YIQ	196.1440, 17.3300, 5.3140

Conversions

Conversions Part 2

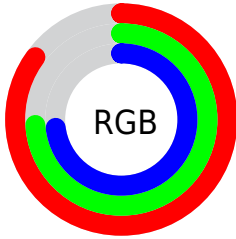
Format	Color
RYB	216, 188, 186
Decimal	14204090
CIELab	78.53, 9.63, 4.67
CIELCh	79, 10.707, 25.888
Yxy	54.1105, 0.3379, 0.3314
Android (android.graphics.Color)	4292394170 (0xFFD8BCBA)
YUV	196.1440, -5.0010, 17.4137
Hunter-Lab	73.5598, 5.1334, 7.9744

Details

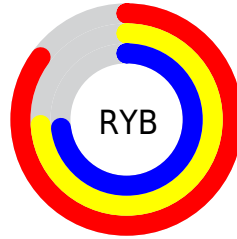
The XYZ color **55.1650, 54.1105, 53.9912** is a light color, and the websafe version is hex **CCCCCC**. A complement of this color would be **56.6905, 63.4887, 74.2328**, and the grayscale version is **52.5787, 55.3169, 60.2401**.

A 20% lighter version of the original color is **89.6177, 92.3722, 97.1107**, and **27.5956, 26.5985, 25.8699** is the 20% darker color. If you saturate the color by 10%, you get **49.0308, 45.2430, 41.4608**, and if you desaturate by 10%, it is **62.2508, 64.3245, 68.5526**.

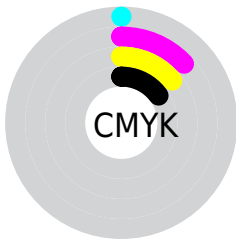
Distribution



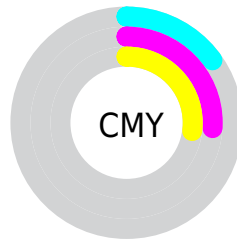
- Red (85%)
- Green (74%)
- Blue (73%)



- Red (85%)
- Yellow (74%)
- Blue (73%)



- Cyan (0%)
- Magenta (13%)
- Yellow (14%)
- Black (15%)





- Cyan (15%)
- Magenta (26%)
- Yellow (27%)

Brightness & Saturation Gradients


These gradients show how the XYZ color 55.1650, 54.1105, 53.9912 changes by changing the brightness by 10 percent. The first figure shows a shift by +10% for each color and the second figure -10%.


Similar to the brightness gradients but the following saturation gradients show a change of the XYZ color 55.1650, 54.1105, 53.9912 by changing the saturation by 10% instead.


 55.1650, 54.1105,
53.9912

 55.1650, 54.1105,
53.9912


396.6633,
402.5312, 419.2501

 39.7682, 38.6900,
38.2015


 96.9296, 96.2365,
97.5176

 27.5413, 26.5187,
25.8361


124.0281,
123.7107, 126.0914

 18.1188, 17.2121,
16.4764


155.7578,
155.9717, 159.7636

 11.1355, 10.3858,
9.7039

192.4843,
193.4038, 198.9528

 6.2260, 5.6555,
5.1000

234.5726,
236.3914, 244.0775

 3.0250, 2.6368,
2.2463

282.3884,

 1.1670, 0.9452,

285.3189, 295.5562

0.7009

336.2968,
340.5707, 353.8076

■ 0.0801, 0.0000,
0.0000

■ 0.0000, 0.0000,
0.0000

■ 55.1650, 54.1105,
53.9912

■ 55.1650, 54.1105,
53.9912

■ 49.0308, 45.2430,
41.4608

■ 62.2508, 64.3245,
68.5526

■ 43.8034, 37.6591,
30.8679

■ 70.3215, 75.9303,
85.2260

■ 39.4411, 31.3014,
22.1169

■ 79.4146, 88.9800,
104.0921

■ 35.8971, 26.1054,
15.1025

■ 82.1291, 93.3390,
108.2953

■ 33.1202, 22.0010,
9.7089

■ 31.0536, 18.9102,
5.8063

■ 29.6322, 16.7446,
3.2449

■ 28.7792, 15.4009,
1.8434

■ 28.4820, 14.9248,
1.3796

Harmonies

Analogous

The Analogous color harmony consists of three colors that are next to each other on the color wheel.



55.5815, 54.1105, 59.7537



55.1650, 54.1105, 53.9912



53.7379, 54.1105, 49.8165

Triad

The Triadic color harmony groups three colors that are evenly spaced from another and form a triangle on the color wheel.



55.1650, 54.1105, 53.9912



48.1460, 54.1105, 52.6420



51.1402, 54.1105, 71.2747

Complementary

The Complementary color scheme is a pair of colors which are on the opposite of each other on the color wheel.



55.1650, 54.1105, 53.9912



56.6905, 63.4887, 74.2328

Split Complementary

Split-complementary colors differ from the complementary color scheme. The scheme consists of three colors, the original color and two neighbors of the complement color.



49.1899, 54.1105, 69.0636



55.1650, 54.1105, 53.9912



47.4914, 54.1105, 58.0884

Square

The Square scheme is like the rectangle color scheme, but the four colors are evenly spaced on the color wheel.



55.1650, 54.1105, 53.9912



49.6804, 54.1105, 49.0757



47.8683, 54.1105, 64.1339



53.2211, 54.1105, 69.9934

Rectangle

The Rectangle color scheme consists of four colors that form a rectangle on the color wheel.



55.1650, 54.1105, 53.9912



52.4253, 54.1105, 48.3579



47.8683, 54.1105, 64.1339



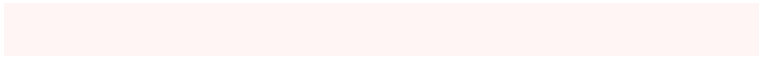
50.4482, 54.1105, 70.9114

Sweetspot

The Sweet Spot groups the original color and five complimentary colors.



55.1665, 54.1129, 53.9923



90.4891, 93.4368, 99.4920



58.0160, 54.5725, 71.0946



19.1904, 19.7431, 20.9287



0.0000, 0.0000, 0.0000



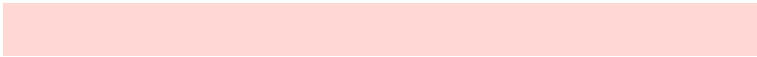
20.3446, 21.4041, 23.3091

Same Dimension

The Same Dimension uses a secret algorithm to generate beautiful new colors.



55.1665, 54.1129, 53.9923



77.2645, 74.3656, 72.3378



58.5383, 60.8566, 55.1163



12.4892, 12.5526, 12.9254



16.8864, 8.8900, 0.8259



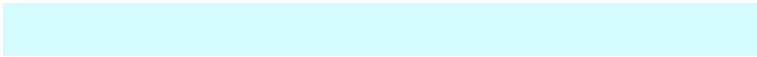
1.0424, 0.5840, 0.0578

Inverse Universe

The Inverse Universe completely reimagines the original color for something new.



56.6905, 63.4887, 74.2328



79.9438, 90.8514, 107.9303



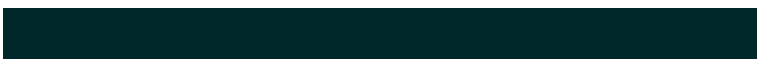
53.0684, 56.2445, 73.0255



12.7179, 13.9592, 15.9616



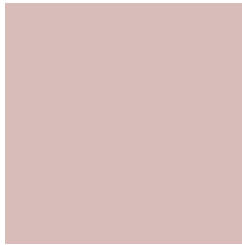
19.8099, 27.8816, 42.7908



1.2167, 1.7254, 2.5882

Previews

White Background



This preview shows how the XYZ color 55.1650, 54.1105, 53.9912 looks on a white background.

Color Contrast Check

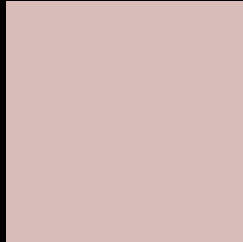
Large Text (above 18pt) WCAG AA × Fail

Any Text WCAG AA × Fail

Large Text (above 18pt) WCAG AAA × Fail

Any Text WCAG AAA × Fail

Black Background



This preview shows how the XYZ color 55.1650, 54.1105, 53.9912 looks on a black background.

Color Contrast Check

Large Text (above 18pt) WCAG AA ✓ Pass

Any Text WCAG AA ✓ Pass

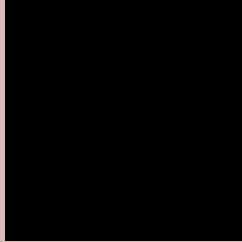
Large Text (above 18pt) WCAG AAA ✓ Pass

Any Text WCAG AAA ✓ Pass

If you want to check with other color combinations, try the [Color Contrast Checker](#).

XYZ 55.1650, 54.1105, 53.9912

Background



This preview shows how black text looks on a background with the XYZ color 55.1650, 54.1105, 53.9912.



This preview shows how white text looks on a background with the XYZ color 55.1650, 54.1105,

Color Blindness Simulation

Color vision deficiency is a very complex topic, and I could not describe the different causes any better than Wikipedia does, so if you want to learn more, you should check out their [article about color blindness](#).

Dichromacy



Original Color

55.1650, 54.1105, 53.9912

Protanopia

52.0303, 54.3998, 55.9020

Deuteranopia

55.1650, 54.1105, 53.9912



Tritanopia

56.8977, 54.1934, 62.1051

Trichromacy



Original Color

55.1650, 54.1105, 53.9912

Protanomaly

53.1036, 54.3092, 55.2608

Deuteranomaly

55.1650, 54.1105, 53.9912

Tritanomaly

56.2359, 54.2325, 59.1337

Monochromacy



Original Color

55.1650, 54.1105, 53.9912

Achromatopsia

52.4687, 55.2011, 60.1140

Achromatomaly

53.2130, 54.6422, 57.6115

CSS Examples

Text

The CSS property to change the color of the text to XYZ 55.1650, 54.1105, 53.9912 is called "color". The color property can be set on classes, ids or directly on the HTML element.

This example shows how text in the color `rgb(216, 188, 186)` looks like.

```
.text, #text, p{  
    color:rgb(216, 188, 186)  
}
```

If you want to add a text shadow in that color use the text-shadow property, you can generate a text shadow directly with our [CSS Text Shadow Generator](#).

Here you see how black text with a 4 pixel rgb(216, 188, 186) colored shadow looks like.

```
.shadow{ text-shadow: 4px 4px 2px rgb(216, 188, 186) }
```

Border

The CSS property to change the border of an element to XYZ 55.1650, 54.1105, 53.9912 is called "border". The border property can be set on classes, ids or directly on the HTML element.

This example shows the color as border, it can be applied via the CSS property "border" or "border-color".

```
.border, #border, table{ border:4px solid rgb(216, 188, 186) }
```


If only the border color should be changed use the property `border-color`.

```
.border{ border-color:rgb(216, 188, 186) }
```

If you want to add a box shadow in that color use:

Here you see how a box with a 4 pixel `rgb(216, 188, 186)` colored shadow looks like.

```
.boxshadow{ -moz-box-shadow:4px 4px 4px  
4px rgb(216, 188, 186); -webkit-box-  
shadow:4px 4px 4px 4px rgb(216, 188, 186);  
box-shadow:4px 4px 4px 4px rgb(216, 188,  
186) }
```

Background

The CSS property to change the background color of an element to XYZ 55.1650, 54.1105, 53.9912 is called "background". The background property can be set on classes, ids or directly on the HTML element.

```
.background, #background, body{  
background: rgb(216, 188, 186) }
```

If only the background color should be changed can be used:

```
.background{ background-color: rgb(216,  
188, 186) }
```

This example shows the color as background, it is applied via the CSS property "background".

To optimize and compress your CSS code, you can use our [online CSS compressor and optimizer](#) based on csstidy. If you want to create a linear or radial gradient as background or border, check our [CSS Gradient Generator](#).

Hey! You found this booklet interesting? Support Converting Colors with the new Membership Option!

The pro membership hides all ads, plus gives you double the colors in the color bucket, and more awesome pro features!

[Learn more, Memberships starting at \\$2.50/m!](#)

**Follow me
on Twitter!**

@ConvertingColor