

Converting Colors

XYZ(55.2000, 55.6765, 57.2732)

Have a look what the booklet for
XYZ(55.2000, 55.6765, 57.2732)
contains.

XYZ(55.0523, 55.6032, 57.1211)	3
<i>Conversions</i>	4
<i>Details</i>	6
<i>Harmonies</i>	12
<i>Previews</i>	24
<i>Color Blindness Simulation</i>	28
<i>CSS Examples</i>	31

Color

**XYZ(55.0523, 55.6032,
57.1211)**

Conversions

Conversions Part 1

Format	Color
Hex	D2C1BF
RGB	210, 193, 191
RGB Percent	82%, 76%, 75%
CMY	0.1765, 0.2431, 0.2510
CMYK	0.00, 0.08, 0.09, 0.18
HSL	6°, 17%, 79%
HSV	6°, 9%, 82%
XYZ	55.0523, 55.6032, 57.1211
YIQ	197.8550, 10.7740, 2.9820

Conversions

Conversions Part 2

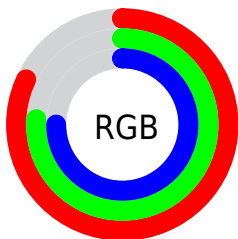
Format	Color
R_{YB}	210, 193, 191
Decimal	13812159
CIE Lab	79.39, 5.64, 3.16
CIE LCh	79, 6.460, 29.266
Yxy	55.6032, 0.3281, 0.3314
Android (android.graphics.Color)	4292002239 (0xFFD2C1BF)
YUV	197.8550, -3.3795, 10.6512
Hunter-Lab	74.5676, 1.2911, 6.7793

Details

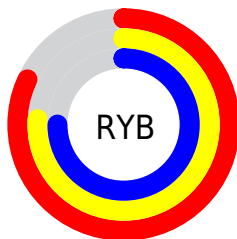
The XYZ color **55.0523, 55.6032, 57.1211** is a light color, and the websafe version is hex **CCCCCC**. A complement of this color would be **55.6744, 60.8401, 69.7824**, and the grayscale version is **53.6051, 56.3967, 61.4160**.

A 20% lighter version of the original color is **91.9042, 95.7268, 101.6289**, and **27.4831, 27.5597, 27.9158** is the 20% darker color. If you saturate the color by 10%, you get **49.0130, 46.9613, 44.5120**, and if you desaturate by 10%, it is **61.9536, 65.4376, 71.6537**.

Distribution



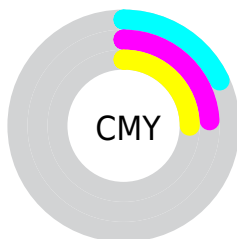
- Red (82%)
- Green (76%)
- Blue (75%)



- Red (82%)
- Yellow (76%)
- Blue (75%)



- Cyan (0%)
- Magenta (8%)
- Yellow (9%)
- Black (18%)





- Cyan (18%)
- Magenta (24%)
- Yellow (25%)

Brightness & Saturation Gradients


These gradients show how the XYZ color 55.0523, 55.6032, 57.1211 changes by changing the brightness by 10 percent. The first figure shows a shift by +10% for each color and the second figure -10%.

Similar to the brightness gradients but the following saturation gradients show a change of the XYZ color 55.0523, 55.6032, 57.1211 by changing the saturation by 10% instead.


 55.0523, 55.6032,
57.1211

 55.0523, 55.6032,
57.1211


396.2433,
408.1944, 431.4094

 39.6776, 39.8849,
40.6925


 96.7655, 98.4242,
102.1440

 27.4704, 27.4488,
27.7610


123.8346,
126.2956, 131.5753

 18.0652, 17.9106,
17.9081


155.5327,
158.9869, 166.1779

 11.0968, 10.8858,
10.7153

192.2249,
196.8824, 206.3703

 6.1997, 5.9901,
5.7640

234.2768,
240.3665, 252.5712

 3.0087, 2.8391,
2.6356

282.0535,

 1.1584, 1.0483,

289.8236, 305.1989

0.9108

335.9206,
345.6381, 364.6721

■ 0.0731, 0.0000,
0.0000

■ 0.0000, 0.0000,
0.0000

■ 55.0523, 55.6032,
57.1211

■ 55.0523, 55.6032,
57.1211

■ 49.0130, 46.9613,
44.5120

■ 61.9536, 65.4376,
71.6537

■ 43.7973, 39.4594,
33.7423

■ 69.7441, 76.4997,
88.1819

■ 39.3709, 33.0521,
24.7271

■ 78.4557, 88.8324,
106.7786

■ 35.6950, 27.6882,
17.3732

■ 80.3886, 92.4418,
108.2139

■ 32.7277, 23.3123,
11.5791

■ 30.4230, 19.8638,
7.2318

■ 28.7293, 17.2756,
4.2033

■ 27.5871, 15.4713,
2.3429

■ 26.9149, 14.3569,
1.4100

Harmonies

Analogous

The Analogous color harmony consists of three colors that are next to each other on the color wheel.



55.3795, 55.6032, 60.6338



55.0523, 55.6032, 57.1211



54.1325, 55.6032, 54.6146

Triad

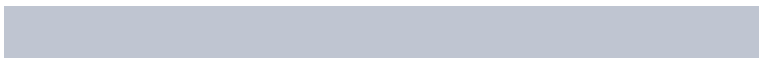
The Triadic color harmony groups three colors that are evenly spaced from another and form a triangle on the color wheel.



55.0523, 55.6032, 57.1211



50.7367, 55.6032, 56.9690



52.8173, 55.6032, 67.9603

Complementary

The Complementary color scheme is a pair of colors which are on the opposite of each other on the color wheel.



55.0523, 55.6032, 57.1211



55.6744, 60.8401, 69.7824

Split Complementary

Split-complementary colors differ from the complementary color scheme. The scheme consists of three colors, the original color and two neighbors of the complement color.



51.5863, 55.6032, 66.8844



55.0523, 55.6032, 57.1211



50.3971, 55.6032, 60.4511

Square

The Square scheme is like the rectangle color scheme, but the four colors are evenly spaced on the color wheel.



55.0523, 55.6032, 57.1211



51.6406, 55.6032, 54.5294



50.7056, 55.6032, 64.0977



54.0764, 55.6032, 66.9820

Rectangle

The Rectangle color scheme consists of four colors that form a rectangle on the color wheel.



55.0523, 55.6032, 57.1211



53.3145, 55.6032, 53.7997



50.7056, 55.6032, 64.0977



52.3866, 55.6032, 67.8262

Sweetspot

The Sweet Spot groups the original color and five complimentary colors.



55.0539, 55.6056, 57.1223



91.6982, 95.2283, 101.8270



56.6073, 55.5230, 67.4732



19.4400, 20.1161, 21.4008



0.0000, 0.0000, 0.0000



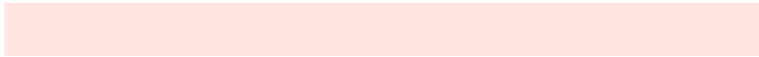
20.3446, 21.4041, 23.3091

Same Dimension

The Same Dimension uses a secret algorithm to generate beautiful new colors.



55.0539, 55.6056, 57.1223



83.3695, 83.3459, 84.3302



57.1975, 59.8930, 57.8368



11.9077, 12.0060, 12.3018



16.4247, 8.7824, 0.8295



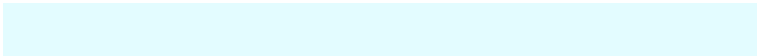
0.9532, 0.5607, 0.0580

Inverse Universe

The Inverse Universe completely reimagines the original color for something new.



55.6744, 60.8401, 69.7824



84.5363, 93.1897, 108.1396



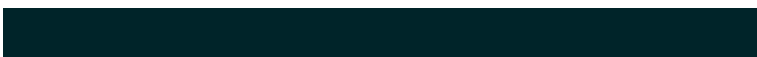
53.4510, 56.3933, 69.0413



12.0474, 13.1851, 15.1537



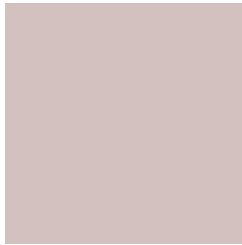
18.0902, 24.8269, 41.0311



1.0428, 1.4507, 2.3046

Previews

White Background



This preview shows how the XYZ color 55.0523, 55.6032, 57.1211 looks on a white background.

Color Contrast Check

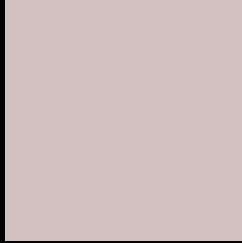
Large Text (above 18pt) WCAG AA × Fail

Any Text WCAG AA × Fail

Large Text (above 18pt) WCAG AAA × Fail

Any Text WCAG AAA × Fail

Black Background



This preview shows how the XYZ color 55.0523, 55.6032, 57.1211 looks on a black background.

Color Contrast Check

Large Text (above 18pt) WCAG AA ✓ Pass

Any Text WCAG AA ✓ Pass

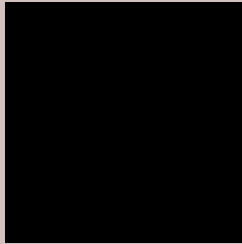
Large Text (above 18pt) WCAG AAA ✓ Pass

Any Text WCAG AAA ✓ Pass

If you want to check with other color combinations, try the [Color Contrast Checker](#).

XYZ 55.0523, 55.6032, 57.1211

Background



This preview shows how black text looks on a background with the XYZ color 55.0523, 55.6032, 57.1211.



This preview shows how white text looks on a background with the XYZ color 55.0523, 55.6032,

Color Blindness Simulation

Color vision deficiency is a very complex topic, and I could not describe the different causes any better than Wikipedia does, so if you want to learn more, you should check out their [article about color blindness](#).

Dichromacy



Original Color

55.0523, 55.6032, 57.1211

Protanopia

53.4530, 55.7476, 58.3952

Deuteranopia

56.8413, 55.5381, 57.5932



Tritanopia

56.9228, 55.7149, 66.1464

Trichromacy



Original Color

55.0523, 55.6032, 57.1211

Protanomaly

53.9314, 55.6734, 57.7727

Deuteranomaly

56.1696, 55.5144, 57.6241

Tritanomaly

56.2562, 55.7652, 63.0571

Monochromacy



Original Color

55.0523, 55.6032, 57.1211

Achromatopsia

53.6758, 56.4712, 61.4971

Achromatomaly

53.9474, 55.9765, 59.5910

CSS Examples

Text

The CSS property to change the color of the text to XYZ 55.0523, 55.6032, 57.1211 is called "color". The color property can be set on classes, ids or directly on the HTML element.

This example shows how text in the color `rgb(210, 193, 191)` looks like.

```
.text, #text, p{  
    color:rgb(210, 193, 191)  
}
```

If you want to add a text shadow in that color use the text-shadow property, you can generate a text shadow directly with our [CSS Text Shadow Generator](#).

Here you see how black text with a 4 pixel rgb(210, 193, 191) colored shadow looks like.

```
.shadow{ text-shadow: 4px 4px 2px rgb(210, 193, 191) }
```

Border

The CSS property to change the border of an element to XYZ 55.0523, 55.6032, 57.1211 is called "border". The border property can be set on classes, ids or directly on the HTML element.

This example shows the color as border, it can be applied via the CSS property "border" or "border-color".

```
.border, #border, table{ border:4px solid rgb(210, 193, 191) }
```


If only the border color should be changed use the property `border-color`.

```
.border{ border-color:rgb(210, 193, 191) }
```

If you want to add a box shadow in that color use:

Here you see how a box with a 4 pixel `rgb(210, 193, 191)` colored shadow looks like.

```
.boxshadow{ -moz-box-shadow:4px 4px 4px  
4px rgb(210, 193, 191); -webkit-box-  
shadow:4px 4px 4px 4px rgb(210, 193, 191);  
box-shadow:4px 4px 4px 4px rgb(210, 193,  
191) }
```

Background

The CSS property to change the background color of an element to XYZ 55.0523, 55.6032, 57.1211 is called "background". The background property can be set on classes, ids or directly on the HTML element.

```
.background, #background, body{  
background: rgb(210, 193, 191) }
```

If only the background color should be changed can be used:

```
.background{ background-color: rgb(210,  
193, 191) }
```

This example shows the color as background, it is applied via the CSS property "background".

To optimize and compress your CSS code, you can use our [online CSS compressor and optimizer](#) based on csstidy. If you want to create a linear or radial gradient as background or border, check our [CSS Gradient Generator](#).

Hey! You found this booklet interesting? Support Converting Colors with the new Membership Option!

The pro membership hides all ads, plus gives you double the colors in the color bucket, and more awesome pro features!

[Learn more, Memberships starting at \\$2.50/m!](#)

**Follow me
on Twitter!**

@ConvertingColor