

Converting Colors

XYZ(55.2019, 54.8496, 58.1222)

Have a look what the booklet for
XYZ(55.2019, 54.8496, 58.1222)
contains.

XYZ(55.4078, 55.1089, 58.1689)	3
<i>Conversions</i>	4
<i>Details</i>	6
<i>Harmonies</i>	12
<i>Previews</i>	24
<i>Color Blindness Simulation</i>	28
<i>CSS Examples</i>	31

Color

**XYZ(55.4078, 55.1089,
58.1689)**

Conversions

Conversions Part 1

Format	Color
Hex	D4BFC1
RGB	212, 191, 193
RGB Percent	83%, 75%, 76%
CMY	0.1686, 0.2510, 0.2431
CMYK	0.00, 0.10, 0.09, 0.17
HSL	354°, 20%, 79%
HSV	354°, 10%, 83%
XYZ	55.4078, 55.1089, 58.1689
YIQ	197.5070, 11.8740, 5.0740

Conversions

Conversions Part 2

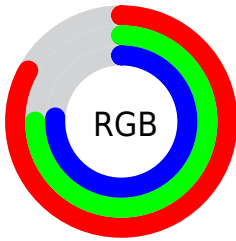
Format	Color
R _Y B	212, 191, 193
Decimal	13942721
CIE Lab	79.10, 7.75, 1.69
CIE LCh	79, 7.935, 12.291
Yxy	55.1089, 0.3285, 0.3267
Android (android.graphics.Color)	4292132801 (0xFFD4BFC1)
YUV	197.5070, -2.2220, 12.7104
Hunter-Lab	74.2354, 3.3169, 5.5067

Details

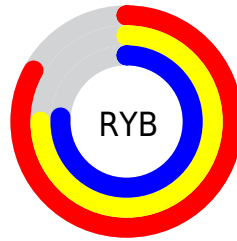
The XYZ color **55.4078, 55.1089, 58.1689** is a light color, and the websafe version is hex **CCCCCC**. A complement of this color would be **56.6643, 62.8178, 70.1143**, and the grayscale version is **53.3867, 56.1670, 61.1659**.

A 20% lighter version of the original color is **91.5996, 94.6211, 103.0584**, and **27.7267, 27.2385, 28.6071** is the 20% darker color. If you saturate the color by 10%, you get **49.1120, 45.7224, 46.1878**, and if you desaturate by 10%, it is **62.6536, 65.9497, 71.8376**.

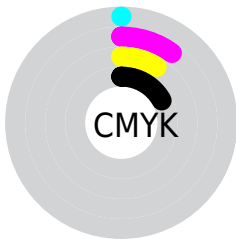
Distribution



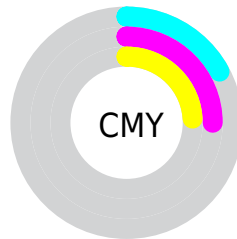
- Red (83%)
- Green (75%)
- Blue (76%)



- Red (83%)
- Yellow (75%)
- Blue (76%)



- Cyan (0%)
- Magenta (10%)
- Yellow (9%)
- Black (17%)



- Cyan (17%)
- Magenta (25%)
- Yellow (24%)

Brightness & Saturation Gradients

These gradients show how the XYZ color 55.4078, 55.1089, 58.1689 changes by changing the brightness by 10 percent. The first figure shows a shift by +10% for each color and the second figure -10%.

Similar to the brightness gradients but the following saturation gradients show a change of the XYZ color 55.4078, 55.1089, 58.1689 by changing the saturation by 10% instead.

■ 55.4078, 55.1089,
58.1689

■ 55.4078, 55.1089,
58.1689

397.5672,
406.3246, 435.4308

■ 39.9634, 39.4889,
41.5288

■ 97.2830, 97.7005,
103.6860

■ 27.6941, 27.1403,
28.4097

124.4446,
125.4409, 133.4001

■ 18.2345, 17.6786,
18.3930

156.2427,
157.9902, 168.3093

■ 11.2192, 10.7195,
11.0602

193.0425,
195.7329, 208.8322

■ 6.2828, 5.8785,
5.9926

235.2096,
239.0532, 255.3872

■ 3.0601, 2.7714,
2.7719

283.1091,

■ 1.1856, 1.0136,

288.3357, 308.3930

0.9794

337.1065,
343.9647, 368.2680

■ 0.0950, 0.0000,
0.0000

■ 0.0000, 0.0000,
0.0000

■ 55.4078, 55.1089,
58.1689

■ 55.4078, 55.1089,
58.1689

■ 49.1120, 45.7224,
46.1878

■ 62.6536, 65.9497,
71.8376

■ 43.7223, 37.7215,
35.8255

■ 70.8816, 78.2952,
87.2523

■ 39.1982, 31.0426,
27.0134

■ 80.1283, 92.2026,
104.4726

■ 35.4946, 25.6146,
19.6770

■ 80.9616, 92.7372,
108.2407

■ 32.5619, 21.3595,
13.7354

■ 30.3454, 18.1905,
9.0998

■ 28.7831, 16.0091,
5.6715

■ 27.8023, 14.6985,
3.3373

■ 27.2832, 14.0534,
1.9525

Harmonies

Analogous

The Analogous color harmony consists of three colors that are next to each other on the color wheel.



55.3306, 55.1089, 62.6931



55.4078, 55.1089, 58.1689



54.6617, 55.1089, 54.3315

Triad

The Triadic color harmony groups three colors that are evenly spaced from another and form a triangle on the color wheel.



55.4078, 55.1089, 58.1689



50.3592, 55.1089, 53.7884



51.4596, 55.1089, 68.6908

Complementary

The Complementary color scheme is a pair of colors which are on the opposite of each other on the color wheel.



55.4078, 55.1089, 58.1689



56.6643, 62.8178, 70.1143

Split Complementary

Split-complementary colors differ from the complementary color scheme. The scheme consists of three colors, the original color and two neighbors of the complement color.



50.1614, 55.1089, 66.0587



55.4078, 55.1089, 58.1689



49.5350, 55.1089, 57.3933

Square

The Square scheme is like the rectangle color scheme, but the four colors are evenly spaced on the color wheel.



55.4078, 55.1089, 58.1689



51.7345, 55.1089, 51.8891



49.4633, 55.1089, 61.8778



53.0295, 55.1089, 68.9242

Rectangle

The Rectangle color scheme consists of four colors that form a rectangle on the color wheel.



55.4078, 55.1089, 58.1689



53.8064, 55.1089, 52.6179



49.4633, 55.1089, 61.8778



50.9778, 55.1089, 68.0513

Sweetspot

The Sweet Spot groups the original color and five complimentary colors.



55.4093, 55.1113, 58.1701



91.5632, 94.7779, 102.3380



57.0659, 55.7045, 70.0323



19.4038, 19.9952, 21.5379



0.0000, 0.0000, 0.0000



20.3446, 21.4041, 23.3091

Same Dimension

The Same Dimension uses a secret algorithm to generate beautiful new colors.



55.4093, 55.1113, 58.1701



81.9112, 80.3497, 84.0891



57.0725, 58.7917, 57.6331



12.4707, 12.4398, 13.1532



16.8573, 8.6792, 1.2866



1.0336, 0.5302, 0.1662

Inverse Universe

The Inverse Universe completely reimagines the original color for something new.



55.4093, 55.1113, 58.1701



81.9112, 80.3497, 84.0891



54.8694, 58.8276, 70.7509



12.4707, 12.4398, 13.1532



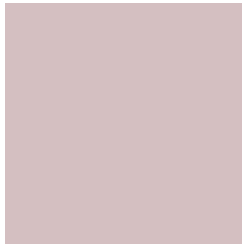
16.8573, 8.6792, 1.2866



1.0336, 0.5302, 0.1662

Previews

White Background



This preview shows how the XYZ color 55.4078, 55.1089, 58.1689 looks on a white background.

Color Contrast Check

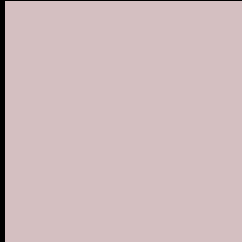
Large Text (above 18pt) WCAG AA × Fail

Any Text WCAG AA × Fail

Large Text (above 18pt) WCAG AAA × Fail

Any Text WCAG AAA × Fail

Black Background



This preview shows how the XYZ color 55.4078, 55.1089, 58.1689 looks on a black background.

Color Contrast Check

Large Text (above 18pt) WCAG AA ✓ Pass

Any Text WCAG AA ✓ Pass

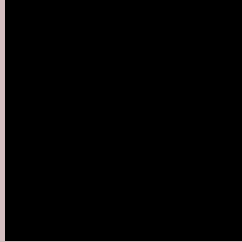
Large Text (above 18pt) WCAG AAA ✓ Pass

Any Text WCAG AAA ✓ Pass

If you want to check with other color combinations, try the [Color Contrast Checker](#).

XYZ 55.4078, 55.1089, 58.1689

Background



This preview shows how black text looks on a background with the XYZ color 55.4078, 55.1089, 58.1689.



This preview shows how white text looks on a background with the XYZ color 55.4078, 55.1089,

Color Blindness Simulation

Color vision deficiency is a very complex topic, and I could not describe the different causes any better than Wikipedia does, so if you want to learn more, you should check out their [article about color blindness](#).

Dichromacy



Original Color

55.4078, 55.1089, 58.1689

Protanopia

52.9186, 55.1125, 59.4784

Deuteranopia

56.3580, 55.2761, 58.1510



Tritanopia

56.8282, 55.0510, 64.7575

Trichromacy



Original Color

55.4078, 55.1089, 58.1689

Protanomaly

53.9312, 55.3160, 58.8735

Deuteranomaly

56.0634, 55.1242, 58.1373

Tritanomaly

56.2794, 55.1432, 62.3210

Monochromacy



Original Color

55.4078, 55.1089, 58.1689

Achromatopsia

53.6758, 56.4712, 61.4971

Achromatomaly

54.1075, 55.7122, 60.1263

CSS Examples

Text

The CSS property to change the color of the text to XYZ 55.4078, 55.1089, 58.1689 is called "color". The color property can be set on classes, ids or directly on the HTML element.

This example shows how text in the color rgb(212, 191, 193) looks like.

```
.text, #text, p{  
    color:rgb(212, 191, 193)  
}
```

If you want to add a text shadow in that color use the text-shadow property, you can generate a text shadow directly with our [CSS Text Shadow Generator](#).

Here you see how black text with a 4 pixel rgb(212, 191, 193) colored shadow looks like.

```
.shadow{ text-shadow: 4px 4px 2px rgb(212, 191, 193) }
```

Border

The CSS property to change the border of an element to XYZ 55.4078, 55.1089, 58.1689 is called "border". The border property can be set on classes, ids or directly on the HTML element.

This example shows the color as border, it can be applied via the CSS property "border" or "border-color".

```
.border, #border, table{ border:4px solid rgb(212, 191, 193) }
```


If only the border color should be changed use the property `border-color`.

```
.border{ border-color:rgb(212, 191, 193) }
```

If you want to add a box shadow in that color use:

Here you see how a box with a 4 pixel `rgb(212, 191, 193)` colored shadow looks like.

```
.boxshadow{ -moz-box-shadow:4px 4px 4px  
4px rgb(212, 191, 193); -webkit-box-  
shadow:4px 4px 4px 4px rgb(212, 191, 193);  
box-shadow:4px 4px 4px 4px rgb(212, 191,  
193) }
```

Background

The CSS property to change the background color of an element to XYZ 55.4078, 55.1089, 58.1689 is called "background". The background property can be set on classes, ids or directly on the HTML element.

```
.background, #background, body{  
background: rgb(212, 191, 193) }
```

If only the background color should be changed can be used:

```
.background{ background-color: rgb(212,  
191, 193) }
```

This example shows the color as background, it is applied via the CSS property "background".

To optimize and compress your CSS code, you can use our [online CSS compressor and optimizer](#) based on csstidy. If you want to create a linear or radial gradient as background or border, check our [CSS Gradient Generator](#).

Hey! You found this booklet interesting? Support Converting Colors with the new Membership Option!

The pro membership hides all ads, plus gives you double the colors in the color bucket, and more awesome pro features!

[Learn more, Memberships starting at \\$2.50/m!](#)

**Follow me
on Twitter!**

@ConvertingColor