

Converting Colors

XYZ(55.2202, 55.2382, 64.0615)

Have a look what the booklet for
XYZ(55.2202, 55.2382, 64.0615)
contains.

XYZ(55.3613, 55.2765, 64.2515)	3
<i>Conversions</i>	4
<i>Details</i>	6
<i>Harmonies</i>	12
<i>Previews</i>	24
<i>Color Blindness Simulation</i>	28
<i>CSS Examples</i>	31

Color

**XYZ(55.3613, 55.2765,
64.2515)**

Conversions

Conversions Part 1

Format	Color
Hex	CFC0CB
RGB	207, 192, 203
RGB Percent	81%, 75%, 80%
CMY	0.1882, 0.2470, 0.2039
CMYK	0.00, 0.07, 0.02, 0.19
HSL	316°, 14%, 78%
HSV	316°, 7%, 81%
XYZ	55.3613, 55.2765, 64.2515
YIQ	197.7390, 5.4090, 6.6010

Conversions

Conversions Part 2

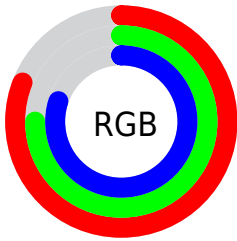
Format	Color
R_{YB}	207, 192, 203
Decimal	13615307
CIE Lab	79.20, 7.22, -3.61
CIE LCh	79, 8.075, 333.406
Yxy	55.2765, 0.3166, 0.3161
Android (android.graphics.Color)	4291805387 (0xFFCFC0CB)
YUV	197.7390, 2.5937, 8.1219
Hunter-Lab	74.3482, 2.8058, 0.8054

Details

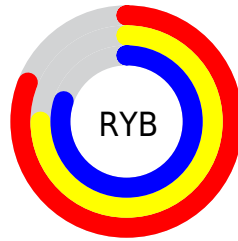
The XYZ color **55.3613, 55.2765, 64.2515** is a light color, and the websafe version is hex **CCCCCC**. A complement of this color would be **54.0170, 59.8192, 60.9268**, and the grayscale version is **53.5019, 56.2882, 61.2978**.

A 20% lighter version of the original color is **92.8574, 95.6148, 108.1691**, and **27.7943, 27.4075, 32.2590** is the 20% darker color. If you saturate the color by 10%, you get **50.4862, 46.5600, 59.4381**, and if you desaturate by 10%, it is **60.9023, 65.2857, 69.4038**.

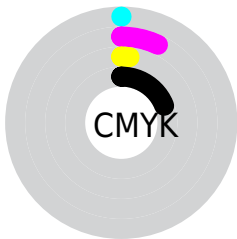
Distribution



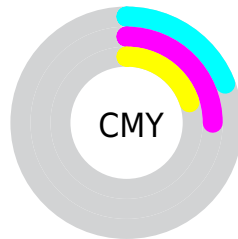
- Red (81%)
- Green (75%)
- Blue (80%)



- Red (81%)
- Yellow (75%)
- Blue (80%)



- Cyan (0%)
- Magenta (7%)
- Yellow (2%)
- Black (19%)



- Cyan (19%)
- Magenta (25%)
- Yellow (20%)

Brightness & Saturation Gradients

These gradients show how the XYZ color 55.3613, 55.2765, 64.2515 changes by changing the brightness by 10 percent. The first figure shows a shift by +10% for each color and the second figure -10%.

Similar to the brightness gradients but the following saturation gradients show a change of the XYZ color 55.3613, 55.2765, 64.2515 by changing the saturation by 10% instead.

■ 55.3613, 55.2765,
64.2515

■ 55.3613, 55.2765,
64.2515

397.3942,
406.9592, 458.3297

■ 39.9261, 39.6231,
46.4069

■ 97.2154, 97.9460,
112.5760

■ 27.6648, 27.2448,
32.2161

124.3649,
125.7308, 143.8930

■ 18.2123, 17.7572,
21.2604

156.1499,
158.3283, 180.5379

■ 11.2031, 10.7758,
13.1214

192.9357,
196.1229, 222.9292

■ 6.2719, 5.9163,
7.3805

235.0876,
239.4988, 271.4855

■ 3.0534, 2.7942,
3.6191

282.9712,

■ 1.1820, 1.0253,

288.8406, 326.6253

1.4188

336.9516,
344.5326, 388.7672

■ 0.0921, 0.0000,
0.1563

■ 0.0000, 0.0000,
0.0000

■ 55.3613, 55.2765,
64.2515

■ 55.3613, 55.2765,
64.2515

■ 50.4862, 46.5600,
59.4381

■ 60.9023, 65.2857,
69.4038

■ 46.2454, 39.0757,
54.9500

■ 67.1295, 76.6304,
74.9010

■ 42.6119, 32.7693,
50.7775

■ 74.0686, 89.3604,
80.7534

■ 39.5548, 27.5793,
46.9092

■ 75.0950, 90.2266,
84.7540

■ 37.0404, 23.4388,
43.3326

■ 75.8611, 90.5330,
88.7881

■ 35.0315, 20.2736,
40.0339

■ 76.6517, 90.8493,
92.9516

■ 33.4858, 18.0000,
36.9979

■ 77.4672, 91.1755,
97.2459

■ 32.3542, 16.5197,
34.2068

■ 78.3077, 91.5117,
101.6719

■ 31.5697, 15.6995,
31.6371

■ 79.1735, 91.8580,
106.2309

Harmonies

Analogous

The Analogous color harmony consists of three colors that are next to each other on the color wheel.



54.2649, 55.2765, 67.9109



55.3613, 55.2765, 64.2515



55.6961, 55.2765, 59.6604

Triad

The Triadic color harmony groups three colors that are evenly spaced from another and form a triangle on the color wheel.



55.3613, 55.2765, 64.2515



52.3546, 55.2765, 51.7477



49.9917, 55.2765, 65.2112

Complementary

The Complementary color scheme is a pair of colors which are on the opposite of each other on the color wheel.



55.3613, 55.2765, 64.2515



54.0170, 59.8192, 60.9268

Split Complementary

Split-complementary colors differ from the complementary color scheme. The scheme consists of three colors, the original color and two neighbors of the complement color.



49.5029, 55.2765, 60.7161



55.3613, 55.2765, 64.2515



50.8494, 55.2765, 53.0717

Square

The Square scheme is like the rectangle color scheme, but the four colors are evenly spaced on the color wheel.



55.3613, 55.2765, 64.2515



53.9394, 55.2765, 52.5878



49.8136, 55.2765, 56.2971



51.1623, 55.2765, 68.4845

Rectangle

The Rectangle color scheme consists of four colors that form a rectangle on the color wheel.



55.3613, 55.2765, 64.2515



55.4368, 55.2765, 56.7264



49.8136, 55.2765, 56.2971



49.7433, 55.2765, 63.7849

Sweetspot

The Sweet Spot groups the original color and five complimentary colors.



55.3629, 55.2789, 64.2527



93.2263, 96.7018, 107.2154



52.8794, 53.9428, 66.6573



19.9734, 20.7327, 22.9663



0.0000, 0.0000, 0.0000



20.3446, 21.4041, 23.3091

Same Dimension

The Same Dimension uses a secret algorithm to generate beautiful new colors.



55.3629, 55.2789, 64.2527



87.1906, 85.8333, 101.4952



54.4907, 54.9300, 59.6597



12.1706, 11.9530, 14.1741



19.8132, 9.7981, 19.7202



1.1398, 0.5606, 1.2709

Inverse Universe

The Inverse Universe completely reimagines the original color for something new.



55.3629, 55.2789, 64.2527



87.1906, 85.8333, 101.4952



54.8921, 60.1692, 65.5349



12.1706, 11.9530, 14.1741



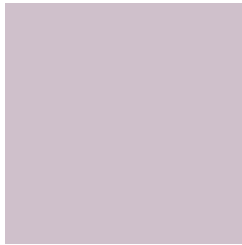
19.8132, 9.7981, 19.7202



1.1398, 0.5606, 1.2709

Previews

White Background



This preview shows how the XYZ color 55.3613, 55.2765, 64.2515 looks on a white background.

Color Contrast Check

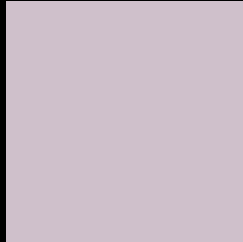
Large Text (above 18pt) WCAG AA × Fail

Any Text WCAG AA × Fail

Large Text (above 18pt) WCAG AAA × Fail

Any Text WCAG AAA × Fail

Black Background



This preview shows how the XYZ color 55.3613, 55.2765, 64.2515 looks on a black background.

Color Contrast Check

Large Text (above 18pt) WCAG AA ✓ Pass

Any Text WCAG AA ✓ Pass

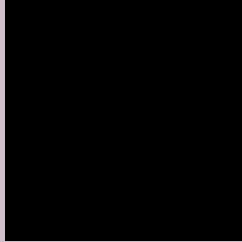
Large Text (above 18pt) WCAG AAA ✓ Pass

Any Text WCAG AAA ✓ Pass

If you want to check with other color combinations, try the [Color Contrast Checker](#).

XYZ 55.3613, 55.2765, 64.2515

Background



This preview shows how black text looks on a background with the XYZ color 55.3613, 55.2765, 64.2515.



This preview shows how white text looks on a background with the XYZ color 55.3613, 55.2765,

Color Blindness Simulation

Color vision deficiency is a very complex topic, and I could not describe the different causes any better than Wikipedia does, so if you want to learn more, you should check out their [article about color blindness](#).

Dichromacy



Original Color

55.3613, 55.2765, 64.2515

Protanopia

53.5605, 55.3083, 65.6102

Deuteranopia

56.3443, 55.1358, 64.1725



Tritanopia

55.7838, 55.1277, 66.0931

Trichromacy



Original Color

55.3613, 55.2765, 64.2515

Protanomaly

54.2783, 55.3607, 64.9517

Deuteranomaly

55.9886, 55.2750, 64.2181

Tritanomaly

55.6627, 55.0793, 65.4552

Monochromacy



Original Color

55.3613, 55.2765, 64.2515

Achromatopsia

53.6758, 56.4712, 61.4971

Achromatomaly

54.2526, 56.0675, 62.6063

CSS Examples

Text

The CSS property to change the color of the text to XYZ 55.3613, 55.2765, 64.2515 is called "color". The color property can be set on classes, ids or directly on the HTML element.

This example shows how text in the color `rgb(207, 192, 203)` looks like.

```
.text, #text, p{  
    color:rgb(207, 192, 203)  
}
```

If you want to add a text shadow in that color use the text-shadow property, you can generate a text shadow directly with our [CSS Text Shadow Generator](#).

Here you see how black text with a 4 pixel rgb(207, 192, 203) colored shadow looks like.

```
.shadow{ text-shadow: 4px 4px 2px rgb(207, 192, 203) }
```

Border

The CSS property to change the border of an element to XYZ 55.3613, 55.2765, 64.2515 is called "border". The border property can be set on classes, ids or directly on the HTML element.

This example shows the color as border, it can be applied via the CSS property "border" or "border-color".

```
.border, #border, table{ border:4px solid rgb(207, 192, 203) }
```


If only the border color should be changed use the property border-color.

```
.border{ border-color:rgb(207, 192, 203) }
```

If you want to add a box shadow in that color use:

Here you see how a box with a 4 pixel rgb(207, 192, 203) colored shadow looks like.

```
.boxshadow{ -moz-box-shadow:4px 4px 4px  
4px rgb(207, 192, 203); -webkit-box-  
shadow:4px 4px 4px 4px rgb(207, 192, 203);  
box-shadow:4px 4px 4px 4px rgb(207, 192,  
203) }
```

Background

The CSS property to change the background color of an element to XYZ 55.3613, 55.2765, 64.2515 is called "background". The background property can be set on classes, ids or directly on the HTML element.

```
.background, #background, body{  
background: rgb(207, 192, 203) }
```

If only the background color should be changed can be used:

```
.background{ background-color: rgb(207,  
192, 203) }
```

This example shows the color as background, it is applied via the CSS property "background".

To optimize and compress your CSS code, you can use our [online CSS compressor and optimizer](#) based on csstidy. If you want to create a linear or radial gradient as background or border, check our [CSS Gradient Generator](#).

Hey! You found this booklet interesting? Support Converting Colors with the new Membership Option!

The pro membership hides all ads, plus gives you double the colors in the color bucket, and more awesome pro features!

[Learn more, Memberships starting at \\$2.50/m!](#)

**Follow me
on Twitter!**

@ConvertingColor