

Converting Colors

XYZ(55.2370, 53.1803, 47.9107)

Have a look what the booklet for
XYZ(55.2370, 53.1803, 47.9107)
contains.

XYZ(55.2110, 53.3227, 47.9398)	3
<i>Conversions</i>	4
<i>Details</i>	6
<i>Harmonies</i>	12
<i>Previews</i>	24
<i>Color Blindness Simulation</i>	28
<i>CSS Examples</i>	31

Color

**XYZ(55.2110, 53.3227,
47.9398)**

Conversions

Conversions Part 1

Format	Color
Hex	DEB9AF
RGB	222, 185, 175
RGB Percent	87%, 73%, 69%
CMY	0.1294, 0.2745, 0.3137
CMYK	0.00, 0.17, 0.21, 0.13
HSL	13°, 42%, 78%
HSV	13°, 21%, 87%
XYZ	55.2110, 53.3227, 47.9398
YIQ	194.9230, 25.2620, 4.7340

Conversions

Conversions Part 2

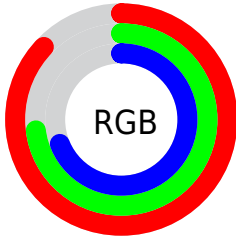
Format	Color
R _Y B	222, 188, 175
Decimal	14596527
CIE Lab	78.07, 11.74, 10.03
CIE LCh	78, 15.438, 40.520
Yxy	53.3227, 0.3528, 0.3408
Android (android.graphics.Color)	4292786607 (0xFFDEB9AF)
YUV	194.9230, -9.8220, 23.7465
Hunter-Lab	73.0224, 7.1716, 12.1913

Details

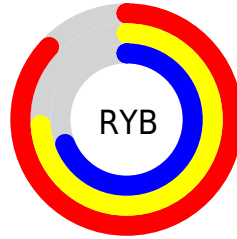
The XYZ color **55.2110, 53.3227, 47.9398** is a light color, and the websafe version is hex **FFCCCC**. A complement of this color would be **54.4069, 61.4731, 78.1054**, and the grayscale version is **51.8732, 54.5747, 59.4318**.

A 20% lighter version of the original color is **87.1191, 89.9401, 88.3698**, and **27.5523, 26.0396, 22.3129** is the 20% darker color. If you saturate the color by 10%, you get **49.7739, 45.6554, 36.2400**, and if you desaturate by 10%, it is **61.4588, 62.0368, 61.6795**.

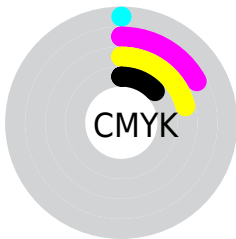
Distribution



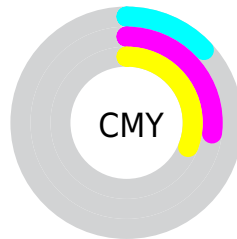
- Red (87%)
- Green (73%)
- Blue (69%)



- Red (87%)
- Yellow (74%)
- Blue (69%)



- Cyan (0%)
- Magenta (17%)
- Yellow (21%)
- Black (13%)



- Cyan (13%)
- Magenta (27%)
- Yellow (31%)

Brightness & Saturation Gradients

These gradients show how the XYZ color 55.2110, 53.3227, 47.9398 changes by changing the brightness by 10 percent. The first figure shows a shift by +10% for each color and the second figure -10%.

Similar to the brightness gradients but the following saturation gradients show a change of the XYZ color 55.2110, 53.3227, 47.9398 by changing the saturation by 10% instead.

■ 55.2110, 53.3227,
47.9398

■ 55.2110, 53.3227,
47.9398

396.8347,
399.5220, 395.0553

■ 39.8052, 38.0604,
33.4196

■ 96.9966, 95.0790,
88.4794

■ 27.5702, 26.0296,
22.1743

124.1070,
122.3419, 115.3358

■ 18.1407, 16.8458,
13.7855

155.8497,
154.3738, 147.1414

■ 11.1514, 10.1246,
7.8346

192.5901,
191.5591, 184.3146

■ 6.2368, 5.4817,
3.9030

234.6934,
234.2821, 227.2741

■ 3.0316, 2.5325,
1.5723

282.5250,

■ 1.1705, 0.8929,

282.9274, 276.4383

0.2709

336.4503,
337.8792, 332.2259

■ 0.0829, 0.0000,
0.0000

■ 0.0000, 0.0000,
0.0000

■ 55.2110, 53.3227,
47.9398

■ 55.2110, 53.3227,
47.9398

■ 49.7739, 45.6554,
36.2400

■ 61.4588, 62.0368,
61.6795

■ 45.1094, 38.9883,
26.4793

■ 68.5447, 71.8279,
77.5467

■ 41.1829, 33.2818,
18.5530

■ 76.5001, 82.7337,
95.6281

■ 37.9552, 28.4908,
12.3455

■ 83.9036, 94.2082,
108.3696

■ 35.3832, 24.5667,
7.7276

■ 83.9343, 94.2696,
108.3798

■ 33.4190, 21.4560,
4.5519

■ 32.0071, 19.0989,
2.6428

■ 31.1511, 17.5832,
1.7520

Harmonies

Analogous

The Analogous color harmony consists of three colors that are next to each other on the color wheel.



56.5892, 53.3227, 55.0846



55.2110, 53.3227, 47.9398



52.6368, 53.3227, 43.7895

Triad

The Triadic color harmony groups three colors that are evenly spaced from another and form a triangle on the color wheel.



55.2110, 53.3227, 47.9398



45.4174, 53.3227, 52.7041



51.7460, 53.3227, 75.9335

Complementary

The Complementary color scheme is a pair of colors which are on the opposite of each other on the color wheel.



55.2110, 53.3227, 47.9398



54.4069, 61.4731, 78.1054

Split Complementary

Split-complementary colors differ from the complementary color scheme. The scheme consists of three colors, the original color and two neighbors of the complement color.



48.7755, 53.3227, 75.1346



55.2110, 53.3227, 47.9398



45.2002, 53.3227, 61.1394

Square

The Square scheme is like the rectangle color scheme, but the four colors are evenly spaced on the color wheel.



55.2110, 53.3227, 47.9398



47.0126, 53.3227, 46.3459



46.4070, 53.3227, 69.5113



54.5367, 53.3227, 71.5968

Rectangle

The Rectangle color scheme consists of four colors that form a rectangle on the color wheel.



55.2110, 53.3227, 47.9398



50.6291, 53.3227, 43.0084



46.4070, 53.3227, 69.5113



50.7342, 53.3227, 76.2664

Sweetspot

The Sweet Spot groups the original color and five complimentary colors.



55.2124, 53.3251, 47.9409



88.9613, 91.6088, 95.1981



57.4141, 50.9740, 69.4982



18.9051, 19.4197, 20.0712



0.0000, 0.0000, 0.0000



20.3446, 21.4041, 23.3091

Same Dimension

The Same Dimension uses a secret algorithm to generate beautiful new colors.



55.2124, 53.3251, 47.9409



72.4598, 68.6091, 58.8584



60.3940, 63.6882, 49.6681



13.9425, 14.1710, 14.3072



18.5689, 10.5758, 1.0626



1.3522, 0.8633, 0.0954

Inverse Universe

The Inverse Universe completely reimagines the original color for something new.



54.4069, 61.4731, 78.1054



71.1816, 81.4943, 106.5861



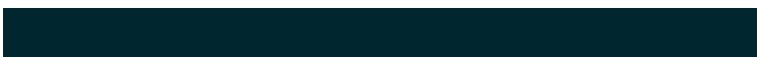
49.0837, 50.8267, 76.3310



13.8560, 15.0511, 17.5626



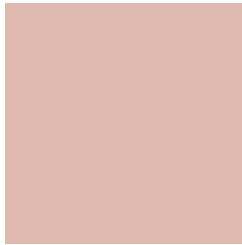
16.9915, 21.4525, 44.2936



1.2403, 1.6121, 3.0910

Previews

White Background



This preview shows how the XYZ color 55.2110, 53.3227, 47.9398 looks on a white background.

Color Contrast Check

Large Text (above 18pt) WCAG AA × Fail

Any Text WCAG AA × Fail

Large Text (above 18pt) WCAG AAA × Fail

Any Text WCAG AAA × Fail

Black Background



This preview shows how the XYZ color 55.2110, 53.3227, 47.9398 looks on a black background.

Color Contrast Check

Large Text (above 18pt) WCAG AA ✓ Pass

Any Text WCAG AA ✓ Pass

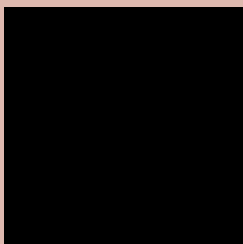
Large Text (above 18pt) WCAG AAA ✓ Pass

Any Text WCAG AAA ✓ Pass

If you want to check with other color combinations, try the [Color Contrast Checker](#).

XYZ 55.2110, 53.3227, 47.9398

Background



This preview shows how black text looks on a background with the XYZ color 55.2110, 53.3227, 47.9398.



This preview shows how white text looks on a background with the XYZ color 55.2110, 53.3227,

47.9398.

Color Blindness Simulation

Color vision deficiency is a very complex topic, and I could not describe the different causes any better than Wikipedia does, so if you want to learn more, you should check out their [article about color blindness](#).

Dichromacy



Original Color

55.2110, 53.3227, 47.9398

Protanopia

51.0261, 53.6740, 50.3186

Deuteranopia

54.5102, 53.2730, 47.9672



Tritanopia

57.7431, 53.4490, 59.4978

Trichromacy



Original Color

55.2110, 53.3227, 47.9398

Protanomaly

52.4618, 53.4512, 49.6716

Deuteranomaly

54.8120, 53.4286, 47.9813

Tritanomaly

56.7511, 53.3451, 54.8825

Monochromacy



Original Color

55.2110, 53.3227, 47.9398

Achromatopsia

51.8711, 54.5724, 59.4294

Achromatomaly

52.8847, 53.8716, 55.1879

CSS Examples

Text

The CSS property to change the color of the text to XYZ 55.2110, 53.3227, 47.9398 is called "color". The color property can be set on classes, ids or directly on the HTML element.

This example shows how text in the color `rgb(222, 185, 175)` looks like.

```
.text, #text, p{  
    color:rgb(222, 185, 175)  
}
```

If you want to add a text shadow in that color use the text-shadow property, you can generate a text shadow directly with our [CSS Text Shadow Generator](#).

Here you see how black text with a 4 pixel rgb(222, 185, 175) colored shadow looks like.

```
.shadow{ text-shadow: 4px 4px 2px rgb(222, 185, 175) }
```

Border

The CSS property to change the border of an element to XYZ 55.2110, 53.3227, 47.9398 is called "border". The border property can be set on classes, ids or directly on the HTML element.

This example shows the color as border, it can be applied via the CSS property "border" or "border-color".

```
.border, #border, table{ border:4px solid rgb(222, 185, 175) }
```


If only the border color should be changed use the property border-color.

```
.border{ border-color:rgb(222, 185, 175) }
```

If you want to add a box shadow in that color use:

Here you see how a box with a 4 pixel rgb(222, 185, 175) colored shadow looks like.

```
.boxshadow{ -moz-box-shadow:4px 4px 4px  
4px rgb(222, 185, 175); -webkit-box-  
shadow:4px 4px 4px 4px rgb(222, 185, 175);  
box-shadow:4px 4px 4px 4px rgb(222, 185,  
175) }
```

Background

The CSS property to change the background color of an element to XYZ 55.2110, 53.3227, 47.9398 is called "background". The background property can be set on classes, ids or directly on the HTML element.

```
.background, #background, body{  
background: rgb(222, 185, 175) }
```

If only the background color should be changed can be used:

```
.background{ background-color: rgb(222,  
185, 175) }
```

This example shows the color as background, it is applied via the CSS property "background".

To optimize and compress your CSS code, you can use our [online CSS compressor and optimizer](#) based on csstidy. If you want to create a linear or radial gradient as background or border, check our [CSS Gradient Generator](#).

Hey! You found this booklet interesting? Support Converting Colors with the new Membership Option!

The pro membership hides all ads, plus gives you double the colors in the color bucket, and more awesome pro features!

[Learn more, Memberships starting at \\$2.50/m!](#)

**Follow me
on Twitter!**

@ConvertingColor