

Converting Colors

XYZ(55.2476, 53.8960, 54.2493)

Have a look what the booklet for
XYZ(55.2476, 53.8960, 54.2493)
contains.

XYZ(55.3552, 53.8802, 54.4961)	3
<i>Conversions</i>	4
<i>Details</i>	6
<i>Harmonies</i>	12
<i>Previews</i>	24
<i>Color Blindness Simulation</i>	28
<i>CSS Examples</i>	31

Color

**XYZ(55.3552, 53.8802,
54.4961)**

Conversions

Conversions Part 1

Format	Color
Hex	D9BBBB
RGB	217, 187, 187
RGB Percent	85%, 73%, 73%
CMY	0.1490, 0.2666, 0.2667
CMYK	0.00, 0.14, 0.14, 0.15
HSL	0°, 28%, 79%
HSV	0°, 14%, 85%
XYZ	55.3552, 53.8802, 54.4961
YIQ	195.9700, 17.8800, 6.3600

Conversions

Conversions Part 2

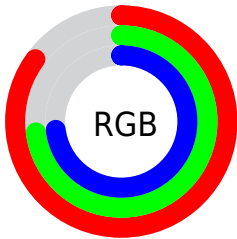
Format	Color
R _Y B	217, 187, 187
Decimal	14269371
CIE Lab	78.39, 10.69, 3.95
CIE LCh	78, 11.397, 20.286
Yxy	53.8802, 0.3381, 0.3291
Android (android.graphics.Color)	4292459451 (0xFFD9BBBB)
YUV	195.9700, -4.4222, 18.4433
Hunter-Lab	73.4031, 6.1560, 7.3640

Details

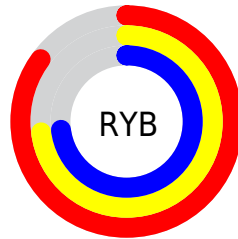
The XYZ color **55.3552, 53.8802, 54.4961** is a light color, and the websafe version is hex **FFCCCC**. A complement of this color would be **57.8303, 65.1988, 75.1827**, and the grayscale version is **52.4708, 55.2033, 60.1164**.

A 20% lighter version of the original color is **89.4683, 91.8322, 97.8039**, and **27.7285, 26.4528, 26.1987** is the 20% darker color. If you saturate the color by 10%, you get **48.9452, 44.5009, 41.7511**, and if you desaturate by 10%, it is **62.8147, 64.7956, 69.3241**.

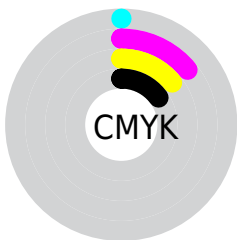
Distribution



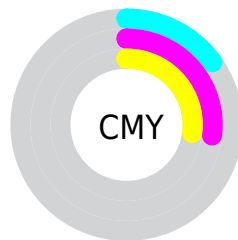
- Red (85%)
- Green (73%)
- Blue (73%)



- Red (85%)
- Yellow (73%)
- Blue (73%)



- Cyan (0%)
- Magenta (14%)
- Yellow (14%)
- Black (15%)





- Cyan (15%)
- Magenta (27%)
- Yellow (27%)

Brightness & Saturation Gradients


These gradients show how the XYZ color 55.3552, 53.8802, 54.4961 changes by changing the brightness by 10 percent. The first figure shows a shift by +10% for each color and the second figure -10%.


Similar to the brightness gradients but the following saturation gradients show a change of the XYZ color 55.3552, 53.8802, 54.4961 by changing the saturation by 10% instead.


 55.3552, 53.8802,
54.4961

 55.3552, 53.8802,
54.4961

397.3715,
401.6530, 421.2270

 39.9211, 38.5059,
38.6026


 97.2065, 95.8983,
98.2660

 27.6610, 26.3756,
26.1452


124.3544,
123.3109, 126.9794

 18.2094, 17.1048,
16.7056

156.1377,
155.5051, 160.8033

 11.2010, 10.3092,
9.8651

192.9216,
192.8652, 200.1560

 6.2705, 5.6045,
5.2052

235.0716,
235.7756, 245.4562

 3.0525, 2.6061,
2.3073

282.9531,

 1.1816, 0.9297,

284.6208, 297.1224

0.7353

336.9312,
339.7852, 355.5731

■ 0.0917, 0.0000,
0.0000

■ 0.0000, 0.0000,
0.0000

■ 55.3552, 53.8802,
54.4961

■ 55.3552, 53.8802,
54.4961

■ 48.9452, 44.5009,
41.7511

■ 62.8147, 64.7956,
69.3241

■ 43.5335, 36.5821,
30.9926

■ 71.3631, 77.3040,
86.3188

■ 39.0711, 30.0523,
22.1217

■ 81.0431, 91.4683,
105.5636

■ 35.5034, 24.8317,
15.0294

■ 82.4255, 93.4918,
108.3092

■ 32.7701, 20.8319,
9.5961

■ 30.8034, 17.9539,
5.6868

■ 29.5250, 16.0832,
3.1462

■ 28.8402, 15.0808,
1.7853

■ 28.6158, 14.7524,
1.3393

Harmonies

Analogous

The Analogous color harmony consists of three colors that are next to each other on the color wheel.



55.5716, 53.8802, 60.7708



55.3552, 53.8802, 54.4961



54.0109, 53.8802, 49.6869

Triad

The Triadic color harmony groups three colors that are evenly spaced from another and form a triangle on the color wheel.



55.3552, 53.8802, 54.4961



47.9718, 53.8802, 51.1382



50.4888, 53.8802, 71.6728

Complementary

The Complementary color scheme is a pair of colors which are on the opposite of each other on the color wheel.



55.3552, 53.8802, 54.4961



57.8303, 65.1988, 75.1827

Split Complementary

Split-complementary colors differ from the complementary color scheme. The scheme consists of three colors, the original color and two neighbors of the complement color.



48.5106, 53.8802, 68.6674



55.3552, 53.8802, 54.4961



47.0856, 53.8802, 56.6112

Square

The Square scheme is like the rectangle color scheme, but the four colors are evenly spaced on the color wheel.



55.3552, 53.8802, 54.4961



49.7339, 53.8802, 47.8483



47.2800, 53.8802, 63.0442



52.7181, 53.8802, 71.0032

Rectangle

The Rectangle color scheme consists of four colors that form a rectangle on the color wheel.



55.3552, 53.8802, 54.4961



52.6770, 53.8802, 47.8117



47.2800, 53.8802, 63.0442



49.7734, 53.8802, 71.0509

Sweetspot

The Sweet Spot groups the original color and five complimentary colors.



55.3567, 53.8826, 54.4972



90.2832, 93.0250, 99.4234



58.9106, 55.3028, 73.2157



19.1386, 19.6394, 20.9114



0.0000, 0.0000, 0.0000



20.3446, 21.4041, 23.3091

Same Dimension

The Same Dimension uses a secret algorithm to generate beautiful new colors.



55.3567, 53.8826, 54.4972



76.5370, 72.9108, 72.0954



58.7060, 60.5813, 55.6137



13.0562, 13.0518, 13.5567



17.3224, 8.9304, 0.8107



1.1223, 0.5787, 0.0525

Inverse Universe

The Inverse Universe completely reimagines the original color for something new.



57.8303, 65.1988, 75.1827



80.8588, 92.6815, 108.2353



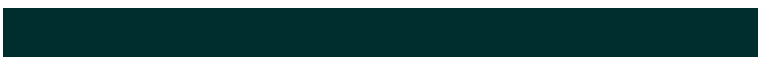
54.1391, 57.8163, 73.9523



13.4448, 14.8293, 16.8059



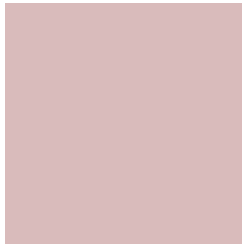
22.5977, 33.0648, 44.9295



1.4640, 2.1422, 2.9108

Previews

White Background



This preview shows how the XYZ color 55.3552, 53.8802, 54.4961 looks on a white background.

Color Contrast Check

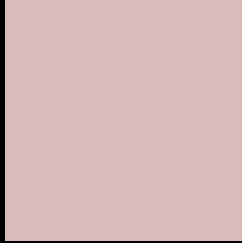
Large Text (above 18pt) WCAG AA × Fail

Any Text WCAG AA × Fail

Large Text (above 18pt) WCAG AAA × Fail

Any Text WCAG AAA × Fail

Black Background



This preview shows how the XYZ color 55.3552, 53.8802, 54.4961 looks on a black background.

Color Contrast Check

Large Text (above 18pt) WCAG AA ✓ Pass

Any Text WCAG AA ✓ Pass

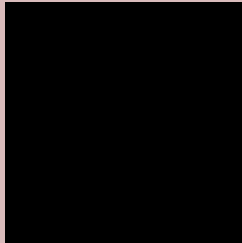
Large Text (above 18pt) WCAG AAA ✓ Pass

Any Text WCAG AAA ✓ Pass

If you want to check with other color combinations, try the [Color Contrast Checker](#).

XYZ 55.3552, 53.8802, 54.4961

Background



This preview shows how black text looks on a background with the XYZ color 55.3552, 53.8802, 54.4961.



This preview shows how white text looks on a background with the XYZ color 55.3552, 53.8802,

54.4961.

Color Blindness Simulation

Color vision deficiency is a very complex topic, and I could not describe the different causes any better than Wikipedia does, so if you want to learn more, you should check out their [article about color blindness](#).

Dichromacy



Original Color

55.3552, 53.8802, 54.4961

Protanopia

51.6529, 53.8634, 56.3895

Deuteranopia

54.9772, 54.0014, 54.5394



Tritanopia

56.9877, 53.9281, 62.0492

Trichromacy



Original Color

55.3552, 53.8802, 54.4961

Protanomaly

52.9929, 53.9149, 55.7577

Deuteranomaly

55.2718, 54.1532, 54.5532

Tritanomaly

56.3227, 53.9634, 59.0772

Monochromacy



Original Color

55.3552, 53.8802, 54.4961

Achromatopsia

52.4687, 55.2011, 60.1140

Achromatomaly

53.5974, 54.8276, 58.2100

CSS Examples

Text

The CSS property to change the color of the text to XYZ 55.3552, 53.8802, 54.4961 is called "color". The color property can be set on classes, ids or directly on the HTML element.

This example shows how text in the color `rgb(217, 187, 187)` looks like.

```
.text, #text, p{  
    color:rgb(217, 187, 187)  
}
```

If you want to add a text shadow in that color use the text-shadow property, you can generate a text shadow directly with our [CSS Text Shadow Generator](#).

Here you see how black text with a 4 pixel rgb(217, 187, 187) colored shadow looks like.

```
.shadow{ text-shadow: 4px 4px 2px rgb(217, 187, 187) }
```

Border

The CSS property to change the border of an element to XYZ 55.3552, 53.8802, 54.4961 is called "border". The border property can be set on classes, ids or directly on the HTML element.

This example shows the color as border, it can be applied via the CSS property "border" or "border-color".

```
.border, #border, table{ border:4px solid rgb(217, 187, 187) }
```


If only the border color should be changed use the property `border-color`.

```
.border{ border-color:rgb(217, 187, 187) }
```

If you want to add a box shadow in that color use:

Here you see how a box with a 4 pixel `rgb(217, 187, 187)` colored shadow looks like.

```
.boxshadow{ -moz-box-shadow:4px 4px 4px  
4px rgb(217, 187, 187); -webkit-box-  
shadow:4px 4px 4px 4px rgb(217, 187, 187);  
box-shadow:4px 4px 4px 4px rgb(217, 187,  
187) }
```

Background

The CSS property to change the background color of an element to XYZ 55.3552, 53.8802, 54.4961 is called "background". The background property can be set on classes, ids or directly on the HTML element.

```
.background, #background, body{  
background: rgb(217, 187, 187) }
```

If only the background color should be changed can be used:

```
.background{ background-color: rgb(217,  
187, 187) }
```

This example shows the color as background, it is applied via the CSS property "background".

To optimize and compress your CSS code, you can use our [online CSS compressor and optimizer](#) based on csstidy. If you want to create a linear or radial gradient as background or border, check our [CSS Gradient Generator](#).

Hey! You found this booklet interesting? Support Converting Colors with the new Membership Option!

The pro membership hides all ads, plus gives you double the colors in the color bucket, and more awesome pro features!

[Learn more, Memberships starting at \\$2.50/m!](#)

**Follow me
on Twitter!**

@ConvertingColor