

Converting Colors

XYZ(55.2938, 55.9350, 46.8001)

Have a look what the booklet for
XYZ(55.2938, 55.9350, 46.8001)
contains.

XYZ(55.4298, 56.0239, 46.9220)	3
<i>Conversions</i>	4
<i>Details</i>	6
<i>Harmonies</i>	12
<i>Previews</i>	24
<i>Color Blindness Simulation</i>	28
<i>CSS Examples</i>	31

Color

**XYZ(55.4298, 56.0239,
46.9220)**

Conversions

Conversions Part 1

Format	Color
Hex	DAC1AC
RGB	218, 193, 172
RGB Percent	85%, 76%, 67%
CMY	0.1451, 0.2431, 0.3255
CMYK	0.00, 0.11, 0.21, 0.15
HSL	27°, 38%, 76%
HSV	27°, 21%, 85%
XYZ	55.4298, 56.0239, 46.9220
YIQ	198.0810, 21.6410, -1.2310

Conversions

Conversions Part 2

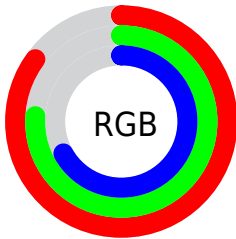
Format	Color
R _Y B	218, 211, 172
Decimal	14336428
CIE Lab	79.63, 5.55, 13.81
CIE LCh	80, 14.882, 68.097
Yxy	56.0239, 0.3500, 0.3537
Android (android.graphics.Color)	4292526508 (0xFFDAC1AC)
YUV	198.0810, -12.8579, 17.4690
Hunter-Lab	74.8491, 1.2029, 15.2262

Details

The XYZ color **55.4298, 56.0239, 46.9220** is a light color, and the websafe version is hex **CCCCCC**. A complement of this color would be **49.6341, 53.7639, 74.0915**, and the grayscale version is **53.7935, 56.5949, 61.6319**.

A 20% lighter version of the original color is **88.9808, 94.5574, 86.2347**, and **27.8725, 27.8988, 21.6853** is the 20% darker color. If you saturate the color by 10%, you get **50.9912, 50.2267, 35.9465**, and if you desaturate by 10%, it is **60.4247, 62.3831, 59.7786**.

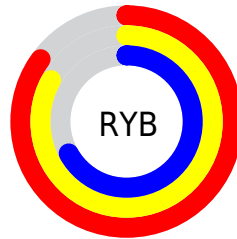
Distribution



Red (85%)

Green (76%)

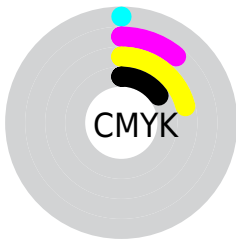
Blue (67%)



Red (85%)

Yellow (83%)

Blue (67%)

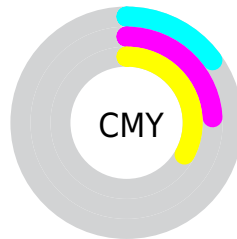


Cyan (0%)

Magenta (11%)

Yellow (21%)

Black (15%)



Cyan (15%)

Magenta (24%)

Yellow (33%)

Brightness & Saturation Gradients

These gradients show how the XYZ color 55.4298, 56.0239, 46.9220 changes by changing the brightness by 10 percent. The first figure shows a shift by +10% for each color and the second figure -10%.

Similar to the brightness gradients but the following saturation gradients show a change of the XYZ color 55.4298, 56.0239, 46.9220 by changing the saturation by 10% instead.

■ 55.4298, 56.0239,
46.9220

■ 55.4298, 56.0239,
46.9220

397.6491,
409.7816, 390.8878

■ 39.9811, 40.2221,
32.6201

■ 97.3150, 99.0395,
86.9459

■ 27.7080, 27.7117,
21.5668

124.4824,
127.0221, 113.5051

■ 18.2450, 18.1085,
13.3437

156.2866,
159.8338, 144.9870

■ 11.2268, 11.0279,
7.5321

193.0931,
197.8589, 181.8103

■ 6.2880, 6.0856,
3.7136

235.2672,
241.4818, 224.3935

■ 3.0633, 2.8972,
1.4696

283.1744,

■ 1.1873, 1.0783,

291.0870, 273.1551

0.1951

337.1799,
347.0587, 328.5137

■ 0.0963, 0.0000,
0.0000

■ 0.0000, 0.0000,
0.0000

■ 55.4298, 56.0239,
46.9220

■ 55.4298, 56.0239,
46.9220

■ 50.9912, 50.2267,
35.9465

■ 60.4247, 62.3831,
59.7786

■ 47.0828, 44.9674,
26.7590

■ 65.9917, 69.3125,
74.5966

■ 43.6828, 40.2312,
19.2633

■ 72.1514, 76.8294,
91.4556

■ 40.7661, 35.9997,
13.3530

■ 78.2382, 84.6748,
106.8280

■ 38.3050, 32.2528,
8.9093

■ 81.8477, 91.8937,
108.0312

■ 36.2683, 28.9690,
5.7963

■ 82.7236, 93.6455,
108.3231

■ 34.6197, 26.1240,
3.8520

■ 33.4270, 23.9323,
2.8576

Harmonies

Analogous

The Analogous color harmony consists of three colors that are next to each other on the color wheel.



57.9184, 56.0239, 51.3658



55.4298, 56.0239, 46.9220



52.4408, 56.0239, 46.0645

Triad

The Triadic color harmony groups three colors that are evenly spaced from another and form a triangle on the color wheel.



55.4298, 56.0239, 46.9220



47.7404, 56.0239, 63.3567



56.8876, 56.0239, 74.9455

Complementary

The Complementary color scheme is a pair of colors which are on the opposite of each other on the color wheel.



55.4298, 56.0239, 46.9220



49.6341, 53.7639, 74.0915

Split Complementary

Split-complementary colors differ from the complementary color scheme. The scheme consists of three colors, the original color and two neighbors of the complement color.



54.0655, 56.0239, 78.8595



55.4298, 56.0239, 46.9220



48.8377, 56.0239, 71.7705

Square

The Square scheme is like the rectangle color scheme, but the four colors are evenly spaced on the color wheel.



55.4298, 56.0239, 46.9220



48.0748, 56.0239, 55.0435



51.1262, 56.0239, 77.6461



58.7818, 56.0239, 67.3725

Rectangle

The Rectangle color scheme consists of four colors that form a rectangle on the color wheel.



55.4298, 56.0239, 46.9220



50.5786, 56.0239, 47.5580



51.1262, 56.0239, 77.6461



56.0119, 56.0239, 76.7636

Sweetspot

The Sweet Spot groups the original color and five complimentary colors.



55.4313, 56.0264, 46.9232



90.0885, 93.8632, 95.5738



53.7790, 48.4562, 59.5229



19.1710, 19.9515, 20.1598



0.0000, 0.0000, 0.0000



20.3446, 21.4041, 23.3091

Same Dimension

The Same Dimension uses a secret algorithm to generate beautiful new colors.



55.4313, 56.0264, 46.9232



76.3591, 76.4077, 60.1582



60.8394, 66.8426, 48.7259



13.5434, 14.0261, 13.7191



20.1309, 14.5474, 1.7469



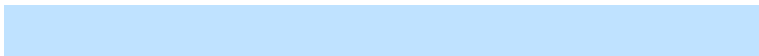
1.3896, 1.1133, 0.1417

Inverse Universe

The Inverse Universe completely reimagines the original color for something new.



49.6341, 53.7639, 74.0915



66.7655, 72.6622, 105.1140



44.8629, 44.2216, 72.5011



12.9220, 13.7837, 16.6316



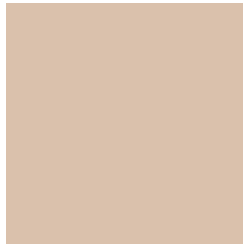
11.6042, 11.0778, 41.2650



0.8376, 0.8892, 2.7019

Previews

White Background



This preview shows how the XYZ color 55.4298, 56.0239, 46.9220 looks on a white background.

Color Contrast Check

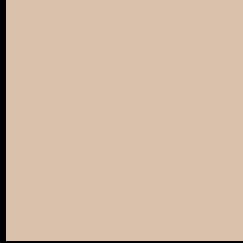
Large Text (above 18pt) WCAG AA × Fail

Any Text WCAG AA × Fail

Large Text (above 18pt) WCAG AAA × Fail

Any Text WCAG AAA × Fail

Black Background



This preview shows how the XYZ color 55.4298, 56.0239, 46.9220 looks on a black background.

Color Contrast Check

Large Text (above 18pt) WCAG AA ✓ Pass

Any Text WCAG AA ✓ Pass

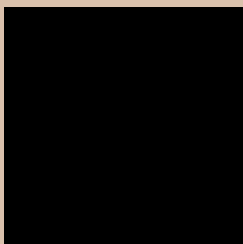
Large Text (above 18pt) WCAG AAA ✓ Pass

Any Text WCAG AAA ✓ Pass

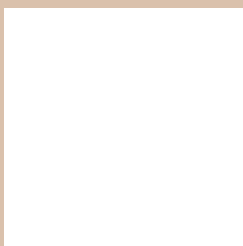
If you want to check with other color combinations, try the [Color Contrast Checker](#).

XYZ 55.4298, 56.0239, 46.9220

Background



This preview shows how black text looks on a background with the XYZ color 55.4298, 56.0239, 46.9220.



This preview shows how white text looks on a background with the XYZ color 55.4298, 56.0239,

Color Blindness Simulation

Color vision deficiency is a very complex topic, and I could not describe the different causes any better than Wikipedia does, so if you want to learn more, you should check out their [article about color blindness](#).

Dichromacy



Original Color

55.4298, 56.0239, 46.9220

Protanopia

53.0598, 56.1103, 48.0782

Deuteranopia

57.0076, 55.8516, 47.3110



Tritanopia

58.8869, 55.8078, 64.1682

Trichromacy



Original Color

55.4298, 56.0239, 46.9220

Protanomaly

53.8611, 56.1986, 47.5438

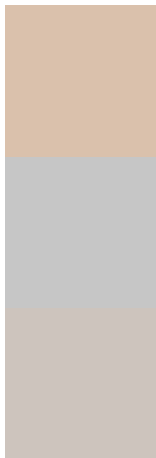
Deuteranomaly

56.2978, 55.8083, 47.3400

Tritanomaly

57.7467, 56.0048, 57.6356

Monochromacy



Original Color

55.4298, 56.0239, 46.9220

Achromatopsia

53.6758, 56.4712, 61.4971

Achromatomaly

54.1021, 56.1331, 56.1274

CSS Examples

Text

The CSS property to change the color of the text to XYZ 55.4298, 56.0239, 46.9220 is called "color". The color property can be set on classes, ids or directly on the HTML element.

This example shows how text in the color `rgb(218, 193, 172)` looks like.

```
.text, #text, p{  
    color:rgb(218, 193, 172)  
}
```

If you want to add a text shadow in that color use the text-shadow property, you can generate a text shadow directly with our [CSS Text Shadow Generator](#).

Here you see how black text with a 4 pixel rgb(218, 193, 172) colored shadow looks like.

```
.shadow{ text-shadow: 4px 4px 2px rgb(218, 193, 172) }
```

Border

The CSS property to change the border of an element to XYZ 55.4298, 56.0239, 46.9220 is called "border". The border property can be set on classes, ids or directly on the HTML element.

This example shows the color as border, it can be applied via the CSS property "border" or "border-color".

```
.border, #border, table{ border:4px solid rgb(218, 193, 172) }
```


If only the border color should be changed use the property `border-color`.

```
.border{ border-color:rgb(218, 193, 172) }
```

If you want to add a box shadow in that color use:

Here you see how a box with a 4 pixel `rgb(218, 193, 172)` colored shadow looks like.

```
.boxshadow{ -moz-box-shadow:4px 4px 4px  
4px rgb(218, 193, 172); -webkit-box-  
shadow:4px 4px 4px 4px rgb(218, 193, 172);  
box-shadow:4px 4px 4px 4px rgb(218, 193,  
172) }
```

Background

The CSS property to change the background color of an element to XYZ 55.4298, 56.0239, 46.9220 is called "background". The background property can be set on classes, ids or directly on the HTML element.

```
.background, #background, body{  
background: rgb(218, 193, 172) }
```

If only the background color should be changed can be used:

```
.background{ background-color: rgb(218,  
193, 172) }
```

This example shows the color as background, it is applied via the CSS property "background".

To optimize and compress your CSS code, you can use our [online CSS compressor and optimizer](#) based on csstidy. If you want to create a linear or radial gradient as background or border, check our [CSS Gradient Generator](#).

Hey! You found this booklet interesting? Support Converting Colors with the new Membership Option!

The pro membership hides all ads, plus gives you double the colors in the color bucket, and more awesome pro features!

[Learn more, Memberships starting at \\$2.50/m!](#)

**Follow me
on Twitter!**

@ConvertingColor