

Converting Colors

XYZ(55.3396, 54.7095, 48.9809)

Have a look what the booklet for
XYZ(55.3396, 54.7095, 48.9809)
contains.

XYZ(55.3468, 54.6296, 49.2224)	3
<i>Conversions</i>	4
<i>Details</i>	6
<i>Harmonies</i>	12
<i>Previews</i>	24
<i>Color Blindness Simulation</i>	28
<i>CSS Examples</i>	31

Color

**XYZ(55.3468, 54.6296,
49.2224)**

Conversions

Conversions Part 1

Format	Color
Hex	DBBDB1
RGB	219, 189, 177
RGB Percent	86%, 74%, 69%
CMY	0.1412, 0.2588, 0.3059
CMYK	0.00, 0.14, 0.19, 0.14
HSL	17°, 37%, 78%
HSV	17°, 19%, 86%
XYZ	55.3468, 54.6296, 49.2224
YIQ	196.6020, 21.7320, 2.6280

Conversions

Conversions Part 2

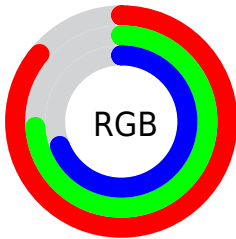
Format	Color
R _Y B	219, 194, 177
Decimal	14400945
CIE Lab	78.83, 8.79, 10.00
CIE LCh	79, 13.315, 48.678
Yxy	54.6296, 0.3477, 0.3432
Android (android.graphics.Color)	4292591025 (0xFFDBBDB1)
YUV	196.6020, -9.6638, 19.6430
Hunter-Lab	73.9118, 4.3190, 12.2535

Details

The XYZ color **55.3468, 54.6296, 49.2224** is a light color, and the websafe version is hex **FFCCCC**. A complement of this color would be **53.2300, 59.0856, 75.6173**, and the grayscale version is **52.8794, 55.6333, 60.5846**.

A 20% lighter version of the original color is **88.6004, 92.4480, 90.2653**, and **27.7521, 26.9561, 22.8091** is the 20% darker color. If you saturate the color by 10%, you get **50.1521, 47.4574, 37.5718**, and if you desaturate by 10%, it is **61.2577, 62.6726, 62.8412**.

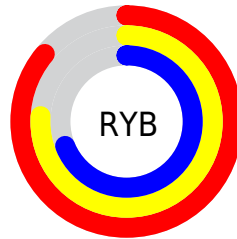
Distribution



Red (86%)

Green (74%)

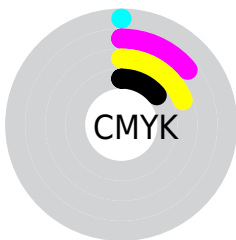
Blue (69%)



Red (86%)

Yellow (76%)

Blue (69%)

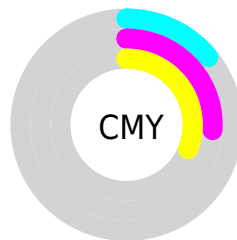


Cyan (0%)

Magenta (14%)

Yellow (19%)

Black (14%)



Cyan (14%)

Magenta (26%)

Yellow (31%)

Brightness & Saturation Gradients

These gradients show how the XYZ color 55.3468, 54.6296, 49.2224 changes by changing the brightness by 10 percent. The first figure shows a shift by +10% for each color and the second figure -10%.

Similar to the brightness gradients but the following saturation gradients show a change of the XYZ color 55.3468, 54.6296, 49.2224 by changing the saturation by 10% instead.

■ 55.3468, 54.6296,
49.2224

■ 55.3468, 54.6296,
49.2224

397.3402,
404.5063, 400.2648

■ 39.9144, 39.1052,
34.4291

■ 97.1942, 96.9981,
90.4061

■ 27.6557, 26.8416,
22.9434

124.3400,
124.6109, 117.6335

■ 18.2054, 17.4543,
14.3468

156.1209,
157.0221, 149.8428

■ 11.1982, 10.5589,
8.2208

192.9023,
194.6160, 187.4524

■ 6.2685, 5.7711,
4.1467

235.0496,
237.7770, 230.8808

■ 3.0513, 2.7064,
1.7062

282.9281,

■ 1.1809, 0.9804,

286.8894, 280.5467

0.3650

336.9032,
342.3377, 336.8685

■ 0.0912, 0.0000,
0.0000

■ 0.0000, 0.0000,
0.0000

■ 55.3468, 54.6296,
49.2224

■ 55.3468, 54.6296,
49.2224

■ 50.1521, 47.4574,
37.5718

■ 61.2577, 62.6726,
62.8412

■ 45.6410, 41.1189,
27.7945

■ 67.9068, 71.6070,
78.5105

■ 41.7849, 35.5854,
19.7924

■ 75.3207, 81.4622,
96.3118

■ 38.5513, 30.8234,
13.4574

■ 81.9384, 91.6299,
107.9755

■ 35.9047, 26.7972,
8.6693

■ 83.0236, 93.8001,
108.3372

■ 33.8057, 23.4679,
5.2917

■ 32.2091, 20.7923,
3.1636

■ 31.0501, 18.7174,
2.0280

■ 30.9687, 18.5704,
1.9522

Harmonies

Analogous

The Analogous color harmony consists of three colors that are next to each other on the color wheel.



56.8806, 54.6296, 54.9487



55.3468, 54.6296, 49.2224



52.9263, 54.6296, 46.3406

Triad

The Triadic color harmony groups three colors that are evenly spaced from another and form a triangle on the color wheel.



55.3468, 54.6296, 49.2224



47.1056, 54.6296, 56.6748



53.5658, 54.6296, 74.3385

Complementary

The Complementary color scheme is a pair of colors which are on the opposite of each other on the color wheel.



55.3468, 54.6296, 49.2224



53.2300, 59.0856, 75.6173

Split Complementary

Split-complementary colors differ from the complementary color scheme. The scheme consists of three colors, the original color and two neighbors of the complement color.



50.9340, 54.6296, 74.8998



55.3468, 54.6296, 49.2224



47.2637, 54.6296, 64.2588

Square

The Square scheme is like the rectangle color scheme, but the four colors are evenly spaced on the color wheel.



55.3468, 54.6296, 49.2224



48.2055, 54.6296, 50.3937



48.6449, 54.6296, 71.0773



55.8286, 54.6296, 69.6029

Rectangle

The Rectangle color scheme consists of four colors that form a rectangle on the color wheel.



55.3468, 54.6296, 49.2224



51.1619, 54.6296, 46.2421



48.6449, 54.6296, 71.0773



52.6932, 54.6296, 75.0356

Sweetspot

The Sweet Spot groups the original color and five complimentary colors.



55.3483, 54.6321, 49.2235



89.2963, 92.2788, 95.3098



56.2108, 51.0149, 65.9803



18.9840, 19.5776, 20.0975



0.0000, 0.0000, 0.0000



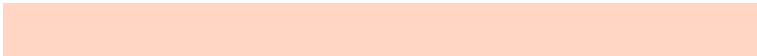
20.3446, 21.4041, 23.3091

Same Dimension

The Same Dimension uses a secret algorithm to generate beautiful new colors.



55.3483, 54.6321, 49.2235



75.0664, 72.9070, 62.5497



60.1716, 64.2787, 50.8313



13.3576, 13.6546, 13.6572



18.4441, 11.1737, 1.1846



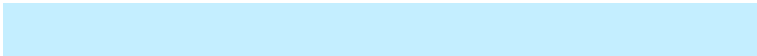
1.2677, 0.8694, 0.1010

Inverse Universe

The Inverse Universe completely reimagines the original color for something new.



53.2300, 59.0856, 75.6173



71.5496, 80.2898, 106.3342



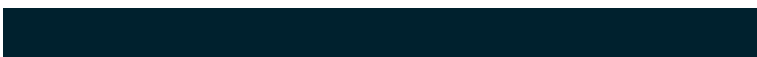
48.4982, 49.6222, 74.0401



13.1141, 14.1679, 16.6956



14.7691, 17.4076, 42.3200



1.0290, 1.2721, 2.7657

Previews

White Background



This preview shows how the XYZ color 55.3468, 54.6296, 49.2224 looks on a white background.

Color Contrast Check

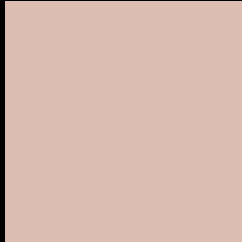
Large Text (above 18pt) WCAG AA × Fail

Any Text WCAG AA × Fail

Large Text (above 18pt) WCAG AAA × Fail

Any Text WCAG AAA × Fail

Black Background



This preview shows how the XYZ color 55.3468, 54.6296, 49.2224 looks on a black background.

Color Contrast Check

Large Text (above 18pt) WCAG AA ✓ Pass

Any Text WCAG AA ✓ Pass

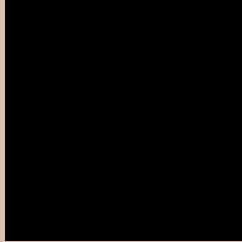
Large Text (above 18pt) WCAG AAA ✓ Pass

Any Text WCAG AAA ✓ Pass

If you want to check with other color combinations, try the [Color Contrast Checker](#).

XYZ 55.3468, 54.6296, 49.2224

Background



This preview shows how black text looks on a background with the XYZ color 55.3468, 54.6296, 49.2224.



This preview shows how white text looks on a background with the XYZ color 55.3468, 54.6296,

Color Blindness Simulation

Color vision deficiency is a very complex topic, and I could not describe the different causes any better than Wikipedia does, so if you want to learn more, you should check out their [article about color blindness](#).

Dichromacy



Original Color

55.3468, 54.6296, 49.2224

Protanopia

52.1104, 54.8821, 51.0268

Deuteranopia

55.7378, 54.5129, 49.1793



Tritanopia

58.1084, 54.8175, 62.1618

Trichromacy



Original Color

55.3468, 54.6296, 49.2224

Protanomaly

53.2191, 54.8045, 50.4212

Deuteranomaly

55.4342, 54.3564, 49.1651

Tritanomaly

57.1035, 54.7186, 57.4212

Monochromacy



Original Color

55.3468, 54.6296, 49.2224

Achromatopsia

53.0703, 55.8340, 60.8033

Achromatomaly

53.7629, 55.2804, 56.5518

CSS Examples

Text

The CSS property to change the color of the text to XYZ 55.3468, 54.6296, 49.2224 is called "color". The color property can be set on classes, ids or directly on the HTML element.

This example shows how text in the color `rgb(219, 189, 177)` looks like.

```
.text, #text, p{  
    color:rgb(219, 189, 177)  
}
```

If you want to add a text shadow in that color use the text-shadow property, you can generate a text shadow directly with our [CSS Text Shadow Generator](#).

Here you see how black text with a 4 pixel rgb(219, 189, 177) colored shadow looks like.

```
.shadow{ text-shadow: 4px 4px 2px rgb(219, 189, 177) }
```

Border

The CSS property to change the border of an element to XYZ 55.3468, 54.6296, 49.2224 is called "border". The border property can be set on classes, ids or directly on the HTML element.

This example shows the color as border, it can be applied via the CSS property "border" or "border-color".

```
.border, #border, table{ border:4px solid rgb(219, 189, 177) }
```


If only the border color should be changed use the property `border-color`.

```
.border{ border-color:rgb(219, 189, 177) }
```

If you want to add a box shadow in that color use:

Here you see how a box with a 4 pixel `rgb(219, 189, 177)` colored shadow looks like.

```
.boxshadow{ -moz-box-shadow:4px 4px 4px 4px rgb(219, 189, 177); -webkit-box-shadow:4px 4px 4px 4px rgb(219, 189, 177); box-shadow:4px 4px 4px 4px rgb(219, 189, 177) }
```

Background

The CSS property to change the background color of an element to XYZ 55.3468, 54.6296, 49.2224 is called "background". The background property can be set on classes, ids or directly on the HTML element.

```
.background, #background, body{  
background: rgb(219, 189, 177) }
```

If only the background color should be changed can be used:

```
.background{ background-color: rgb(219,  
189, 177) }
```

This example shows the color as background, it is applied via the CSS property "background".

To optimize and compress your CSS code, you can use our [online CSS compressor and optimizer](#) based on csstidy. If you want to create a linear or radial gradient as background or border, check our [CSS Gradient Generator](#).

Hey! You found this booklet interesting? Support Converting Colors with the new Membership Option!

The pro membership hides all ads, plus gives you double the colors in the color bucket, and more awesome pro features!

[Learn more, Memberships starting at \\$2.50/m!](#)

**Follow me
on Twitter!**

@ConvertingColor