

Converting Colors

XYZ(55.4198, 53.2120, 53.0610)

Have a look what the booklet for
XYZ(55.4198, 53.2120, 53.0610)
contains.

XYZ(55.6211, 53.4164, 53.2778)	3
<i>Conversions</i>	4
<i>Details</i>	6
<i>Harmonies</i>	12
<i>Previews</i>	24
<i>Color Blindness Simulation</i>	28
<i>CSS Examples</i>	31

Color

**XYZ(55.6211, 53.4164,
53.2778)**

Conversions

Conversions Part 1

Format	Color
Hex	DCB9B9
RGB	220, 185, 185
RGB Percent	86%, 73%, 73%
CMY	0.1373, 0.2745, 0.2745
CMYK	0.00, 0.16, 0.16, 0.14
HSL	0°, 33%, 79%
HSV	0°, 16%, 86%
XYZ	55.6211, 53.4164, 53.2778
YIQ	195.4650, 20.8600, 7.4200

Conversions

Conversions Part 2

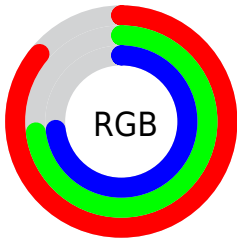
Format	Color
R _Y B	220, 185, 185
Decimal	14465465
CIE Lab	78.12, 12.53, 4.68
CIE LCh	78, 13.372, 20.464
Yxy	53.4164, 0.3427, 0.3291
Android (android.graphics.Color)	4292655545 (0xFFDCB9B9)
YUV	195.4650, -5.1592, 21.5172
Hunter-Lab	73.0865, 7.9426, 7.9400

Details

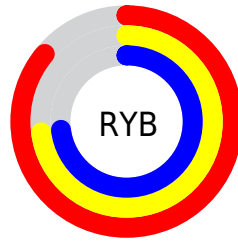
The XYZ color **55.6211, 53.4164, 53.2778** is a light color, and the websafe version is hex **FFCCCC**. A complement of this color would be **58.5185, 66.6663, 77.4941**, and the grayscale version is **52.1715, 54.8885, 59.7736**.

A 20% lighter version of the original color is **88.5725, 90.5215, 96.0232**, and **27.9332, 26.1678, 25.4084** is the 20% darker color. If you saturate the color by 10%, you get **49.2250, 44.0574, 40.5604**, and if you desaturate by 10%, it is **63.0916, 64.3479, 68.1275**.

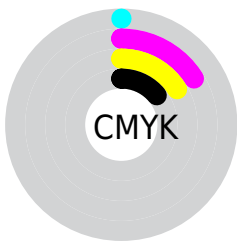
Distribution



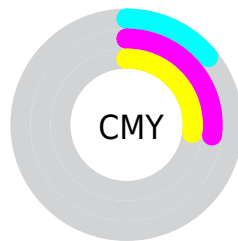
- Red (86%)
- Green (73%)
- Blue (73%)



- Red (86%)
- Yellow (73%)
- Blue (73%)



- Cyan (0%)
- Magenta (16%)
- Yellow (16%)
- Black (14%)





- Cyan (14%)
- Magenta (27%)
- Yellow (27%)

Brightness & Saturation Gradients


These gradients show how the XYZ color 55.6211, 53.4164, 53.2778 changes by changing the brightness by 10 percent. The first figure shows a shift by +10% for each color and the second figure -10%.


Similar to the brightness gradients but the following saturation gradients show a change of the XYZ color 55.6211, 53.4164, 53.2778 by changing the saturation by 10% instead.


 55.6211, 53.4164,
53.2778

 55.6211, 53.4164,
53.2778


398.3602,
399.8806, 416.4465

 40.1350, 38.1353,
37.6353


 97.5934, 95.2168,
96.4587

 27.8285, 26.0877,
25.4002


124.8103,
122.5049, 124.8342

 18.3362, 16.8893,
16.1537


156.6683,
154.5641, 158.2912

 11.2928, 10.1556,
9.4775

193.5325,
191.7788, 197.2481

 6.3329, 5.5022,
4.9529

235.7685,
234.5334, 242.1236

 3.0911, 2.5448,
2.1614

283.7415,

 1.2021, 0.8990,

283.2123, 293.3361

0.6519

337.8170,
338.1999, 351.3042

■ 0.1080, 0.0000,
0.0000

■ 0.0000, 0.0000,
0.0000

■ 55.6211, 53.4164,
53.2778

■ 55.6211, 53.4164,
53.2778

■ 49.2250, 44.0574,
40.5604

■ 63.0916, 64.3479,
68.1275

■ 43.8496, 36.1918,
29.8744

■ 71.6778, 76.9118,
85.1974

■ 39.4436, 29.7445,
21.1155

■ 81.4247, 91.1738,
104.5748

■ 35.9492, 24.6311,
14.1691

■ 83.3254, 93.9557,
108.3513

■ 33.3027, 20.7584,
8.9083

■ 31.4320, 18.0209,
5.1900

■ 30.2533, 16.2959,
2.8473

■ 29.6626, 15.4314,
1.6736

■ 29.5156, 15.2163,
1.3814

Harmonies

Analogous

The Analogous color harmony consists of three colors that are next to each other on the color wheel.



55.8845, 53.4164, 60.5760



55.6211, 53.4164, 53.2778



54.0341, 53.4164, 47.7622

Triad

The Triadic color harmony groups three colors that are evenly spaced from another and form a triangle on the color wheel.



55.6211, 53.4164, 53.2778



46.9963, 53.4164, 49.4804



49.9435, 53.4164, 73.5246

Complementary

The Complementary color scheme is a pair of colors which are on the opposite of each other on the color wheel.



55.6211, 53.4164, 53.2778



58.5185, 66.6663, 77.4941

Split Complementary

Split-complementary colors differ from the complementary color scheme. The scheme consists of three colors, the original color and two neighbors of the complement color.



47.6414, 53.4164, 69.9700



55.6211, 53.4164, 53.2778



45.9788, 53.4164, 55.8118

Square

The Square scheme is like the rectangle color scheme, but the four colors are evenly spaced on the color wheel.



55.6211, 53.4164, 53.2778



49.0355, 53.4164, 45.7037



46.2108, 53.4164, 63.3346



52.5463, 53.4164, 72.6991

Rectangle

The Rectangle color scheme consists of four colors that form a rectangle on the color wheel.



55.6211, 53.4164, 53.2778



52.4681, 53.4164, 45.6359



46.2108, 53.4164, 63.3346



49.1103, 53.4164, 72.7916

Sweetspot

The Sweet Spot groups the original color and five complimentary colors.



55.6226, 53.4188, 53.2789



89.1316, 91.3399, 97.1340



59.7829, 55.0815, 75.1914



18.9067, 19.3000, 20.4504



0.0000, 0.0000, 0.0000



20.3446, 21.4041, 23.3091

Same Dimension

The Same Dimension uses a secret algorithm to generate beautiful new colors.



55.6226, 53.4188, 53.2789



74.6529, 70.1537, 68.3498



59.5107, 61.1951, 54.5750



13.0562, 13.0518, 13.5567



17.3224, 8.9304, 0.8107



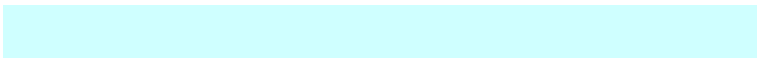
1.1223, 0.5786, 0.0525

Inverse Universe

The Inverse Universe completely reimagines the original color for something new.



58.5185, 66.6663, 77.4941



79.4147, 91.9370, 108.1678



54.1645, 57.9583, 76.0428



13.4448, 14.8293, 16.8059



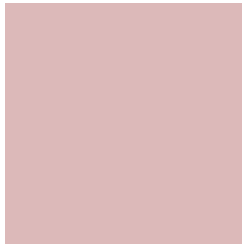
22.5980, 33.0655, 44.9296



1.4641, 2.1422, 2.9108

Previews

White Background



This preview shows how the XYZ color 55.6211, 53.4164, 53.2778 looks on a white background.

Color Contrast Check

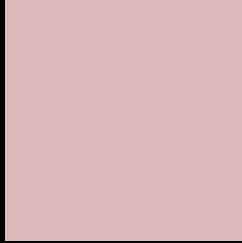
Large Text (above 18pt) WCAG AA × Fail

Any Text WCAG AA × Fail

Large Text (above 18pt) WCAG AAA × Fail

Any Text WCAG AAA × Fail

Black Background



This preview shows how the XYZ color 55.6211, 53.4164, 53.2778 looks on a black background.

Color Contrast Check

Large Text (above 18pt) WCAG AA ✓ Pass

Any Text WCAG AA ✓ Pass

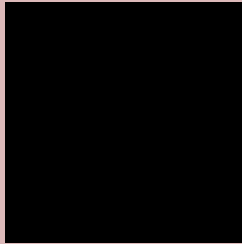
Large Text (above 18pt) WCAG AAA ✓ Pass

Any Text WCAG AAA ✓ Pass

If you want to check with other color combinations, try the [Color Contrast Checker](#).

XYZ 55.6211, 53.4164, 53.2778

Background



This preview shows how black text looks on a background with the XYZ color 55.6211, 53.4164, 53.2778.



This preview shows how white text looks on a background with the XYZ color 55.6211, 53.4164,

Color Blindness Simulation

Color vision deficiency is a very complex topic, and I could not describe the different causes any better than Wikipedia does, so if you want to learn more, you should check out their [article about color blindness](#).

Dichromacy



Original Color

55.6211, 53.4164, 53.2778

Protanopia

51.3236, 53.3792, 55.7423

Deuteranopia

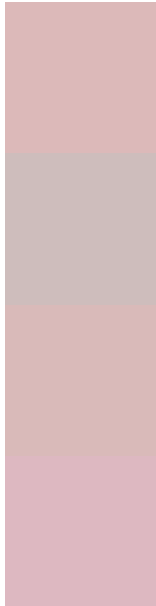
54.5516, 53.4905, 53.3485



Tritanopia

57.1357, 53.4278, 60.1245

Trichromacy



Original Color

55.6211, 53.4164, 53.2778

Protanomaly

52.7283, 53.1478, 55.0564

Deuteranomaly

54.9311, 53.3723, 53.3056

Tritanomaly

56.5849, 53.5034, 57.7969

Monochromacy



Original Color

55.6211, 53.4164, 53.2778

Achromatopsia

51.8711, 54.5724, 59.4294

Achromatomaly

52.9366, 53.8606, 56.8963

CSS Examples

Text

The CSS property to change the color of the text to XYZ 55.6211, 53.4164, 53.2778 is called "color". The color property can be set on classes, ids or directly on the HTML element.

This example shows how text in the color `rgb(220, 185, 185)` looks like.

```
.text, #text, p{  
    color:rgb(220, 185, 185)  
}
```

If you want to add a text shadow in that color use the text-shadow property, you can generate a text shadow directly with our [CSS Text Shadow Generator](#).

Here you see how black text with a 4 pixel rgb(220, 185, 185) colored shadow looks like.

```
.shadow{ text-shadow: 4px 4px 2px rgb(220, 185, 185) }
```

Border

The CSS property to change the border of an element to XYZ 55.6211, 53.4164, 53.2778 is called "border". The border property can be set on classes, ids or directly on the HTML element.

This example shows the color as border, it can be applied via the CSS property "border" or "border-color".

```
.border, #border, table{ border:4px solid rgb(220, 185, 185) }
```


If only the border color should be changed use the property `border-color`.

```
.border{ border-color:rgb(220, 185, 185) }
```

If you want to add a box shadow in that color use:

Here you see how a box with a 4 pixel `rgb(220, 185, 185)` colored shadow looks like.

```
.boxshadow{ -moz-box-shadow:4px 4px 4px  
4px rgb(220, 185, 185); -webkit-box-  
shadow:4px 4px 4px 4px rgb(220, 185, 185);  
box-shadow:4px 4px 4px 4px rgb(220, 185,  
185) }
```

Background

The CSS property to change the background color of an element to XYZ 55.6211, 53.4164, 53.2778 is called "background". The background property can be set on classes, ids or directly on the HTML element.

```
.background, #background, body{  
background: rgb(220, 185, 185) }
```

If only the background color should be changed can be used:

```
.background{ background-color: rgb(220,  
185, 185) }
```

This example shows the color as background, it is applied via the CSS property "background".

To optimize and compress your CSS code, you can use our [online CSS compressor and optimizer](#) based on csstidy. If you want to create a linear or radial gradient as background or border, check our [CSS Gradient Generator](#).

Hey! You found this booklet interesting? Support Converting Colors with the new Membership Option!

The pro membership hides all ads, plus gives you double the colors in the color bucket, and more awesome pro features!

[Learn more, Memberships starting at \\$2.50/m!](#)

**Follow me
on Twitter!**

@ConvertingColor