

Converting Colors

XYZ(55.4245, 55.7708, 42.0030)

Have a look what the booklet for
XYZ(55.4245, 55.7708, 42.0030)
contains.

XYZ(55.4954, 55.8375, 42.0352)	3
<i>Conversions</i>	4
<i>Details</i>	6
<i>Harmonies</i>	12
<i>Previews</i>	24
<i>Color Blindness Simulation</i>	28
<i>CSS Examples</i>	31

Color

**XYZ(55.4954, 55.8375,
42.0352)**

Conversions

Conversions Part 1

Format	Color
Hex	DEC0A2
RGB	222, 192, 162
RGB Percent	87%, 75%, 64%
CMY	0.1294, 0.2470, 0.3647
CMYK	0.00, 0.14, 0.27, 0.13
HSL	30°, 48%, 75%
HSV	30°, 27%, 87%
XYZ	55.4954, 55.8375, 42.0352
YIQ	197.5500, 27.5100, -2.9700

Conversions

Conversions Part 2

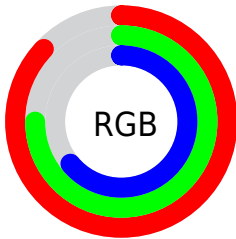
Format	Color
RYB	222, 222, 162
Decimal	14598306
CIELab	79.52, 6.17, 19.06
CIELCh	80, 20.038, 72.054
Yxy	55.8375, 0.3618, 0.3641
Android (android.graphics.Color)	4292788386 (0xFFDEC0A2)
YUV	197.5500, -17.5261, 21.4427
Hunter-Lab	74.7245, 1.7982, 18.9544

Details

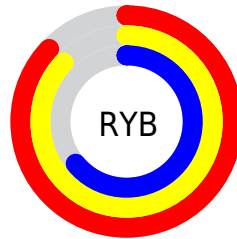
The XYZ color **55.4954, 55.8375, 42.0352** is a light color, and the websafe version is hex **FFCC99**. A complement of this color would be **46.9343, 50.6531, 76.4107**, and the grayscale version is **53.4959, 56.2818, 61.2909**.

A 20% lighter version of the original color is **87.3318, 93.4046, 79.0716**, and **27.7730, 27.6980, 18.6343** is the 20% darker color. If you saturate the color by 10%, you get **51.3483, 50.4273, 31.7614**, and if you desaturate by 10%, it is **60.1776, 61.7597, 54.2074**.

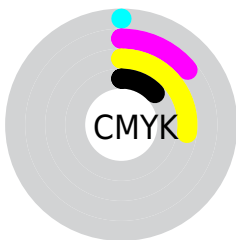
Distribution



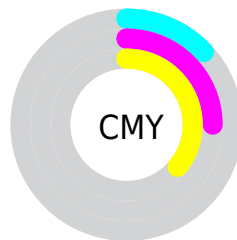
- Red (87%)
- Green (75%)
- Blue (64%)



- Red (87%)
- Yellow (87%)
- Blue (64%)



- Cyan (0%)
- Magenta (14%)
- Yellow (27%)
- Black (13%)





- Cyan (13%)
- Magenta (25%)
- Yellow (36%)

Brightness & Saturation Gradients


These gradients show how the XYZ color 55.4954, 55.8375, 42.0352 changes by changing the brightness by 10 percent. The first figure shows a shift by +10% for each color and the second figure -10%.

Similar to the brightness gradients but the following saturation gradients show a change of the XYZ color 55.4954, 55.8375, 42.0352 by changing the saturation by 10% instead.


 55.4954, 55.8375,
42.0352


 55.4954, 55.8375,
42.0352


397.8930,
409.0788, 370.4328

 40.0339, 40.0727,
28.8031


 97.4105, 98.7669,
79.5236

 27.7493, 27.5952,
18.6876


 124.5948,
126.7003, 104.6169

 18.2763, 18.0207,
11.2702


156.4175,
159.4587, 134.5010

 11.2494, 10.9649,
6.1325

193.2438,
197.4264, 169.5945

 6.3034, 6.0432,
2.8557

235.4392,
240.9879, 210.3159

 3.0728, 2.8714,
1.0214

283.3689,

 1.1924, 1.0650,

290.5275, 257.0837

0.0000

337.3984,
346.4297, 310.3165

■ 0.1003, 0.0000,
0.0000

■ 0.0000, 0.0000,
0.0000

■ 55.4954, 55.8375,
42.0352

■ 55.4954, 55.8375,
42.0352

■ 51.3483, 50.4273,
31.7614

■ 60.1776, 61.7597,
54.2074

■ 47.7096, 45.5061,
23.2846

■ 65.4115, 68.2009,
68.3652

■ 44.5566, 41.0601,
16.4994

■ 71.2181, 75.1775,
84.5946

■ 41.8628, 37.0718,
11.2876

■ 77.6160, 82.7029,
102.9754

■ 39.5986, 33.5222,
7.5155

■ 81.5872, 89.5755,
107.5974

■ 37.7300, 30.3901,
5.0269

■ 83.9343, 94.2696,
108.3798

■ 36.2136, 27.6505,
3.6180

■ 35.8106, 26.9023,
3.3052

Harmonies

Analogous

The Analogous color harmony consists of three colors that are next to each other on the color wheel.



59.0358, 55.8375, 47.1116



55.4954, 55.8375, 42.0352



51.4701, 55.8375, 41.5752

Triad

The Triadic color harmony groups three colors that are evenly spaced from another and form a triangle on the color wheel.



55.4954, 55.8375, 42.0352



45.8490, 55.8375, 65.5505



58.4331, 55.8375, 78.8085

Complementary

The Complementary color scheme is a pair of colors which are on the opposite of each other on the color wheel.



55.4954, 55.8375, 42.0352



46.9343, 50.6531, 76.4107

Split Complementary

Split-complementary colors differ from the complementary color scheme. The scheme consists of three colors, the original color and two neighbors of the complement color.



54.7065, 55.8375, 85.1844



55.4954, 55.8375, 42.0352



47.5238, 55.8375, 76.9063

Square

The Square scheme is like the rectangle color scheme, but the four colors are evenly spaced on the color wheel.



55.4954, 55.8375, 42.0352



46.0363, 55.8375, 54.2129



50.7199, 55.8375, 84.4472



60.7900, 55.8375, 67.8949

Rectangle

The Rectangle color scheme consists of four colors that form a rectangle on the color wheel.



55.4954, 55.8375, 42.0352



49.0649, 55.8375, 43.8620



50.7199, 55.8375, 84.4472



57.2913, 55.8375, 81.6121

Sweetspot

The Sweet Spot groups the original color and five complimentary colors.



55.4969, 55.8401, 42.0364



88.7701, 92.4199, 91.4547



52.5594, 45.1767, 55.8195



18.7599, 19.4880, 18.9171



0.0000, 0.0000, 0.0000



20.3446, 21.4041, 23.3091

Same Dimension

The Same Dimension uses a secret algorithm to generate beautiful new colors.



55.4969, 55.8401, 42.0364



72.9204, 72.4903, 49.8871



62.7673, 70.3810, 44.4598



14.2707, 14.8274, 14.4166



21.3820, 16.2019, 2.0003



1.5716, 1.3021, 0.1685

Inverse Universe

The Inverse Universe completely reimagines the original color for something new.



46.9343, 50.6531, 76.4107



59.4678, 64.3411, 103.8925



41.0061, 38.7967, 74.4347



13.5153, 14.3698, 17.4490



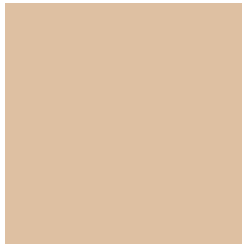
11.3181, 10.1057, 42.4024



0.8741, 0.8796, 2.9689

Previews

White Background



This preview shows how the XYZ color 55.4954, 55.8375, 42.0352 looks on a white background.

Color Contrast Check

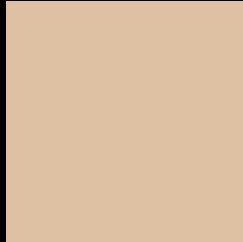
Large Text (above 18pt) WCAG AA × Fail

Any Text WCAG AA × Fail

Large Text (above 18pt) WCAG AAA × Fail

Any Text WCAG AAA × Fail

Black Background



This preview shows how the XYZ color 55.4954, 55.8375, 42.0352 looks on a black background.

Color Contrast Check

Large Text (above 18pt) WCAG AA ✓ Pass

Any Text WCAG AA ✓ Pass

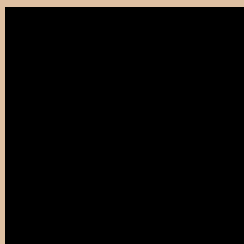
Large Text (above 18pt) WCAG AAA ✓ Pass

Any Text WCAG AAA ✓ Pass

If you want to check with other color combinations, try the [Color Contrast Checker](#).

XYZ 55.4954, 55.8375, 42.0352

Background



This preview shows how black text looks on a background with the XYZ color 55.4954, 55.8375, 42.0352.



This preview shows how white text looks on a background with the XYZ color 55.4954, 55.8375,

Color Blindness Simulation

Color vision deficiency is a very complex topic, and I could not describe the different causes any better than Wikipedia does, so if you want to learn more, you should check out their [article about color blindness](#).

Dichromacy



Original Color

55.4954, 55.8375, 42.0352

Protanopia

52.6795, 56.0227, 43.1589

Deuteranopia

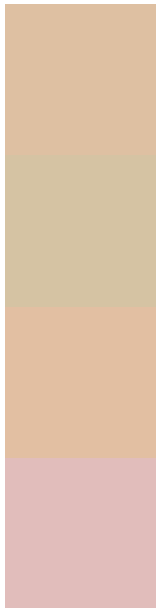
56.9300, 55.9295, 41.9774



Tritanopia

59.9915, 56.0886, 62.9226

Trichromacy



Original Color

55.4954, 55.8375, 42.0352

Protanomaly

53.5665, 55.8207, 42.6015

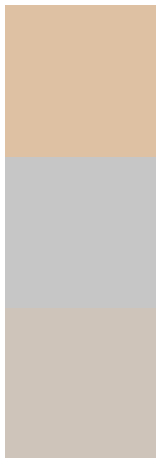
Deuteranomaly

56.5164, 56.0390, 42.0203

Tritanomaly

58.2186, 55.9906, 54.7525

Monochromacy



Original Color

55.4954, 55.8375, 42.0352

Achromatopsia

53.6758, 56.4712, 61.4971

Achromatomaly

54.2290, 56.2480, 53.8977

CSS Examples

Text

The CSS property to change the color of the text to XYZ 55.4954, 55.8375, 42.0352 is called "color". The color property can be set on classes, ids or directly on the HTML element.

This example shows how text in the color `rgb(222, 192, 162)` looks like.

```
.text, #text, p{  
    color:rgb(222, 192, 162)  
}
```

If you want to add a text shadow in that color use the text-shadow property, you can generate a text shadow directly with our [CSS Text Shadow Generator](#).

Here you see how black text with a 4 pixel rgb(222, 192, 162) colored shadow looks like.

```
.shadow{ text-shadow: 4px 4px 2px rgb(222, 192, 162) }
```

Border

The CSS property to change the border of an element to XYZ 55.4954, 55.8375, 42.0352 is called "border". The border property can be set on classes, ids or directly on the HTML element.

This example shows the color as border, it can be applied via the CSS property "border" or "border-color".

```
.border, #border, table{ border:4px solid rgb(222, 192, 162) }
```


If only the border color should be changed use the property `border-color`.

```
.border{ border-color:rgb(222, 192, 162) }
```

If you want to add a box shadow in that color use:

Here you see how a box with a 4 pixel `rgb(222, 192, 162)` colored shadow looks like.

```
.boxshadow{ -moz-box-shadow:4px 4px 4px  
4px rgb(222, 192, 162); -webkit-box-  
shadow:4px 4px 4px 4px rgb(222, 192, 162);  
box-shadow:4px 4px 4px 4px rgb(222, 192,  
162) }
```

Background

The CSS property to change the background color of an element to XYZ 55.4954, 55.8375, 42.0352 is called "background". The background property can be set on classes, ids or directly on the HTML element.

```
.background, #background, body{  
background: rgb(222, 192, 162) }
```

If only the background color should be changed can be used:

```
.background{ background-color: rgb(222,  
192, 162) }
```

This example shows the color as background, it is applied via the CSS property "background".

To optimize and compress your CSS code, you can use our [online CSS compressor and optimizer](#) based on csstidy. If you want to create a linear or radial gradient as background or border, check our [CSS Gradient Generator](#).

Hey! You found this booklet interesting? Support Converting Colors with the new Membership Option!

The pro membership hides all ads, plus gives you double the colors in the color bucket, and more awesome pro features!

[Learn more, Memberships starting at \\$2.50/m!](#)

**Follow me
on Twitter!**

@ConvertingColor