

Converting Colors

XYZ(55.4538, 55.4649, 52.0781)

Have a look what the booklet for
XYZ(55.4538, 55.4649, 52.0781)
contains.

XYZ(55.6120, 55.6756, 52.0714)	3
<i>Conversions</i>	4
<i>Details</i>	6
<i>Harmonies</i>	12
<i>Previews</i>	24
<i>Color Blindness Simulation</i>	28
<i>CSS Examples</i>	31

Color

**XYZ(55.6120, 55.6756,
52.0714)**

Conversions

Conversions Part 1

Format	Color
Hex	D8C0B6
RGB	216, 192, 182
RGB Percent	85%, 75%, 71%
CMY	0.1529, 0.2470, 0.2863
CMYK	0.00, 0.11, 0.16, 0.15
HSL	18°, 30%, 78%
HSV	18°, 16%, 85%
XYZ	55.6120, 55.6756, 52.0714
YIQ	198.0360, 17.5140, 1.9780

Conversions

Conversions Part 2

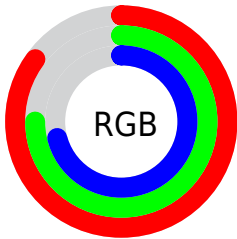
Format	Color
R _Y B	216, 196, 182
Decimal	14205110
CIE Lab	79.43, 6.86, 8.13
CIE LCh	79, 10.641, 49.823
Yxy	55.6756, 0.3404, 0.3408
Android (android.graphics.Color)	4292395190 (0xFFD8C0B6)
YUV	198.0360, -7.9057, 15.7544
Hunter-Lab	74.6161, 2.4594, 10.8553

Details

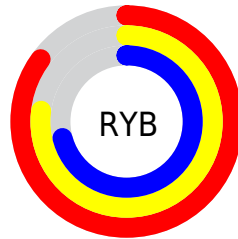
The XYZ color **55.6120, 55.6756, 52.0714** is a light color, and the websafe version is hex **CCCCCC**. A complement of this color would be **53.7570, 59.0442, 73.5295**, and the grayscale version is **53.7387, 56.5373, 61.5691**.

A 20% lighter version of the original color is **90.2400, 94.5678, 94.3862**, and **27.8930, 27.6273, 24.6314** is the 20% darker color. If you saturate the color by 10%, you get **50.3744, 48.5010, 40.1487**, and if you desaturate by 10%, it is **61.5438, 63.6863, 65.9255**.

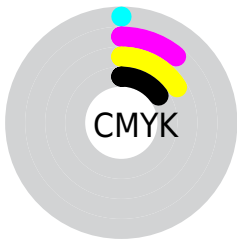
Distribution



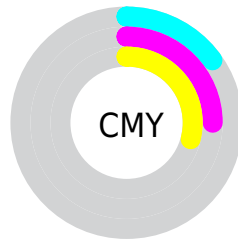
- Red (85%)
- Green (75%)
- Blue (71%)



- Red (85%)
- Yellow (77%)
- Blue (71%)



- Cyan (0%)
- Magenta (11%)
- Yellow (16%)
- Black (15%)



- Cyan (15%)
- Magenta (25%)
- Yellow (29%)

Brightness & Saturation Gradients

These gradients show how the XYZ color 55.6120, 55.6756, 52.0714 changes by changing the brightness by 10 percent. The first figure shows a shift by +10% for each color and the second figure -10%.

Similar to the brightness gradients but the following saturation gradients show a change of the XYZ color 55.6120, 55.6756, 52.0714 by changing the saturation by 10% instead.

■ 55.6120, 55.6756,
52.0714

■ 55.6120, 55.6756,
52.0714

398.3264,
408.4678, 411.6770

■ 40.1277, 39.9429,
36.6794

■ 97.5802, 98.5301,
94.6642

■ 27.8228, 27.4940,
24.6655

124.7947,
126.4207, 122.7020

■ 18.3319, 17.9446,
15.6113

156.6501,
159.1327, 155.7922

■ 11.2897, 10.9102,
9.0981

193.5116,
197.0505, 194.3532

■ 6.3307, 6.0065,
4.7076

235.7447,
240.5586, 238.8037

■ 3.0898, 2.8490,
2.0210

283.7146,

■ 1.2014, 1.0534,

290.0412, 289.5621

0.5681

337.7867,
345.8828, 347.0470

■ 0.1075, 0.0000,
0.0000

■ 0.0000, 0.0000,
0.0000

■ 55.6120, 55.6756,
52.0714

■ 55.6120, 55.6756,
52.0714

■ 50.3744, 48.5010,
40.1487

■ 61.5438, 63.6863,
65.9255

■ 45.8001, 42.1279,
30.0676

■ 68.1900, 72.5518,
81.7883

■ 41.8626, 36.5298,
21.7363

■ 75.5755, 82.2992,
99.7374

■ 38.5320, 31.6762,
15.0536

■ 81.4891, 92.0590,
108.0820

■ 35.7755, 27.5342,
9.9078

■ 82.1291, 93.3390,
108.2953

■ 33.5570, 24.0686,
6.1734

■ 31.8355, 21.2403,
3.7045

■ 30.5627, 19.0057,
2.3218

■ 30.1275, 18.2159,
1.9281

Harmonies

Analogous

The Analogous color harmony consists of three colors that are next to each other on the color wheel.



56.8763, 55.6756, 56.7195



55.6120, 55.6756, 52.0714



53.6470, 55.6756, 49.7659

Triad

The Triadic color harmony groups three colors that are evenly spaced from another and form a triangle on the color wheel.



55.6120, 55.6756, 52.0714



48.9778, 55.6756, 58.5667



54.3229, 55.6756, 72.3729

Complementary

The Complementary color scheme is a pair of colors which are on the opposite of each other on the color wheel.



55.6120, 55.6756, 52.0714



53.7570, 59.0442, 73.5295

Split Complementary

Split-complementary colors differ from the complementary color scheme. The scheme consists of three colors, the original color and two neighbors of the complement color.



52.1957, 55.6756, 72.9505



55.6120, 55.6756, 52.0714



49.1477, 55.6756, 64.6980

Square

The Square scheme is like the rectangle color scheme, but the four colors are evenly spaced on the color wheel.



55.6120, 55.6756, 52.0714



49.8417, 55.6756, 53.3454



50.3124, 55.6756, 70.0593



56.1183, 55.6756, 68.5304

Rectangle

The Rectangle color scheme consists of four colors that form a rectangle on the color wheel.



55.6120, 55.6756, 52.0714



52.2204, 55.6756, 49.7548



50.3124, 55.6756, 70.0593



53.6217, 55.6756, 72.9648

Sweetspot

The Sweet Spot groups the original color and five complimentary colors.



55.6135, 55.6781, 52.0726



90.2608, 93.5983, 97.5104



56.2326, 52.5296, 65.8023



19.1801, 19.8468, 20.5415



0.0000, 0.0000, 0.0000



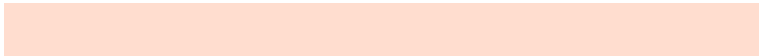
20.3446, 21.4041, 23.3091

Same Dimension

The Same Dimension uses a secret algorithm to generate beautiful new colors.



55.6135, 55.6781, 52.0726



78.2528, 77.3535, 69.5498



59.4735, 63.3980, 53.3592



12.7181, 13.0103, 13.0016



17.9141, 10.9455, 1.1685



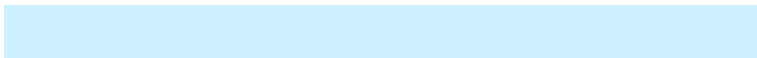
1.1518, 0.8028, 0.0943

Inverse Universe

The Inverse Universe completely reimagines the original color for something new.



53.7570, 59.0442, 73.5295



75.0362, 83.1799, 106.7082



49.9633, 51.4569, 72.2649



12.4693, 13.4620, 15.8787



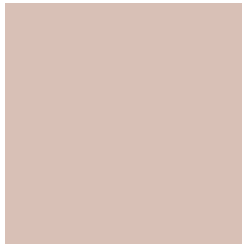
14.1227, 16.5073, 40.8950



0.9220, 1.1359, 2.4900

Previews

White Background



This preview shows how the XYZ color 55.6120, 55.6756, 52.0714 looks on a white background.

Color Contrast Check

Large Text (above 18pt) WCAG AA × Fail

Any Text WCAG AA × Fail

Large Text (above 18pt) WCAG AAA × Fail

Any Text WCAG AAA × Fail

Black Background



This preview shows how the XYZ color 55.6120, 55.6756, 52.0714 looks on a black background.

Color Contrast Check

Large Text (above 18pt) WCAG AA ✓ Pass

Any Text WCAG AA ✓ Pass

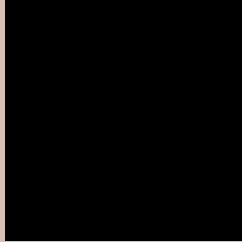
Large Text (above 18pt) WCAG AAA ✓ Pass

Any Text WCAG AAA ✓ Pass

If you want to check with other color combinations, try the [Color Contrast Checker](#).

XYZ 55.6120, 55.6756, 52.0714

Background



This preview shows how black text looks on a background with the XYZ color 55.6120, 55.6756, 52.0714.



This preview shows how white text looks on a background with the XYZ color 55.6120, 55.6756,

Color Blindness Simulation

Color vision deficiency is a very complex topic, and I could not describe the different causes any better than Wikipedia does, so if you want to learn more, you should check out their [article about color blindness](#).

Dichromacy



Original Color

55.6120, 55.6756, 52.0714

Protanopia

53.0203, 55.6371, 53.2920

Deuteranopia

56.6757, 55.5765, 51.9962



Tritanopia

58.3101, 55.8149, 64.8268

Trichromacy



Original Color

55.6120, 55.6756, 52.0714

Protanomaly

54.0748, 55.8590, 52.7316

Deuteranomaly

56.2877, 55.6991, 52.0403

Tritanomaly

57.2907, 55.7179, 59.9596

Monochromacy



Original Color

55.6120, 55.6756, 52.0714

Achromatopsia

53.6758, 56.4712, 61.4971

Achromatomaly

54.4312, 56.2648, 57.8605

CSS Examples

Text

The CSS property to change the color of the text to XYZ 55.6120, 55.6756, 52.0714 is called "color". The color property can be set on classes, ids or directly on the HTML element.

This example shows how text in the color `rgb(216, 192, 182)` looks like.

```
.text, #text, p{  
    color:rgb(216, 192, 182)  
}
```

If you want to add a text shadow in that color use the text-shadow property, you can generate a text shadow directly with our [CSS Text Shadow Generator](#).

Here you see how black text with a 4 pixel rgb(216, 192, 182) colored shadow looks like.

```
.shadow{ text-shadow: 4px 4px 2px rgb(216, 192, 182) }
```

Border

The CSS property to change the border of an element to XYZ 55.6120, 55.6756, 52.0714 is called "border". The border property can be set on classes, ids or directly on the HTML element.

This example shows the color as border, it can be applied via the CSS property "border" or "border-color".

```
.border, #border, table{ border:4px solid rgb(216, 192, 182) }
```


If only the border color should be changed use the property `border-color`.

```
.border{ border-color:rgb(216, 192, 182) }
```

If you want to add a box shadow in that color use:

Here you see how a box with a 4 pixel `rgb(216, 192, 182)` colored shadow looks like.

```
.boxshadow{ -moz-box-shadow:4px 4px 4px 4px rgb(216, 192, 182); -webkit-box-shadow:4px 4px 4px 4px rgb(216, 192, 182); box-shadow:4px 4px 4px 4px rgb(216, 192, 182) }
```

Background

The CSS property to change the background color of an element to XYZ 55.6120, 55.6756, 52.0714 is called "background". The background property can be set on classes, ids or directly on the HTML element.

```
.background, #background, body{  
background: rgb(216, 192, 182) }
```

If only the background color should be changed can be used:

```
.background{ background-color: rgb(216,  
192, 182) }
```

This example shows the color as background, it is applied via the CSS property "background".

To optimize and compress your CSS code, you can use our [online CSS compressor and optimizer](#) based on csstidy. If you want to create a linear or radial gradient as background or border, check our [CSS Gradient Generator](#).

Hey! You found this booklet interesting? Support Converting Colors with the new Membership Option!

The pro membership hides all ads, plus gives you double the colors in the color bucket, and more awesome pro features!

[Learn more, Memberships starting at \\$2.50/m!](#)

**Follow me
on Twitter!**

@ConvertingColor