

Converting Colors

XYZ(55.4956, 52.3902, 48.6786)

Have a look what the booklet for
XYZ(55.4956, 52.3902, 48.6786)
contains.

XYZ(55.7151, 52.6378, 48.8186)	3
<i>Conversions</i>	4
<i>Details</i>	6
<i>Harmonies</i>	12
<i>Previews</i>	24
<i>Color Blindness Simulation</i>	28
<i>CSS Examples</i>	31

Color

**XYZ(55.7151, 52.6378,
48.8186)**

Conversions

Conversions Part 1

Format	Color
Hex	E1B6B1
RGB	225, 182, 177
RGB Percent	88%, 71%, 69%
CMY	0.1176, 0.2863, 0.3059
CMYK	0.00, 0.19, 0.21, 0.12
HSL	6°, 44%, 79%
HSV	6°, 21%, 88%
XYZ	55.7151, 52.6378, 48.8186
YIQ	194.2870, 27.2330, 7.5610

Conversions

Conversions Part 2

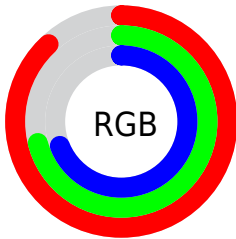
Format	Color
RYB	225, 183, 177
Decimal	14792369
CIELab	77.66, 14.74, 8.41
CIELCh	78, 16.974, 29.695
Yxy	52.6378, 0.3545, 0.3349
Android (android.graphics.Color)	4292982449 (0xFFE1B6B1)
YUV	194.2870, -8.5225, 26.9353
Hunter-Lab	72.5519, 10.1104, 10.8914

Details

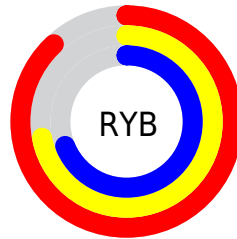
The XYZ color **55.7151, 52.6378, 48.8186** is a light color, and the websafe version is hex **FFCCCC**. A complement of this color would be **57.3147, 65.9680, 80.9468**, and the grayscale version is **51.4870, 54.1683, 58.9893**.

A 20% lighter version of the original color is **86.5225, 88.2923, 89.5727**, and **27.8505, 25.5908, 22.5404** is the 20% darker color. If you saturate the color by 10%, you get **49.8202, 44.1458, 36.6864**, and if you desaturate by 10%, it is **62.5767, 62.4706, 63.0985**.

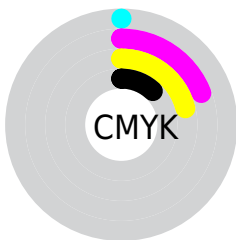
Distribution



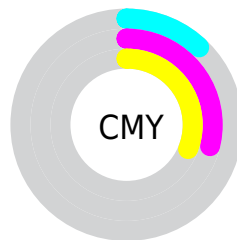
- Red (88%)
- Green (71%)
- Blue (69%)



- Red (88%)
- Yellow (72%)
- Blue (69%)



- Cyan (0%)
- Magenta (19%)
- Yellow (21%)
- Black (12%)



- Cyan (12%)
- Magenta (29%)
- Yellow (31%)

Brightness & Saturation Gradients

These gradients show how the XYZ color 55.7151, 52.6378, 48.8186 changes by changing the brightness by 10 percent. The first figure shows a shift by +10% for each color and the second figure -10%.

Similar to the brightness gradients but the following saturation gradients show a change of the XYZ color 55.7151, 52.6378, 48.8186 by changing the saturation by 10% instead.

■ 55.7151, 52.6378,
48.8186

■ 55.7151, 52.6378,
48.8186

398.7094,
396.8940, 398.6297

■ 40.2106, 37.5137,
34.1110

■ 97.7301, 94.0712,
89.8002

■ 27.8878, 25.6055,
22.7008

124.9714,
121.1493, 116.9112

■ 18.3811, 16.5287,
14.1696

156.8557,
152.9808, 148.9939

■ 11.3253, 9.8991,
8.0986

193.7483,
189.9501, 186.4667

■ 6.3550, 5.3321,
4.0694

236.0147,
232.4418, 229.7481

■ 3.1048, 2.4434,
1.6635

284.0200,

■ 1.2094, 0.8481,

280.8400, 279.2567

0.3355

338.1298,
335.5293, 335.4110

■ 0.1138, 0.0000,
0.0000

■ 0.0000, 0.0000,
0.0000

■ 55.7151, 52.6378,
48.8186

■ 55.7151, 52.6378,
48.8186

■ 49.8202, 44.1458,
36.6864

■ 62.5767, 62.4706,
63.0985

■ 44.8444, 36.9296,
26.5948

■ 70.4413, 73.6912,
79.6194

■ 40.7424, 30.9296,
18.4325

■ 79.3486, 86.3532,
98.4735

■ 37.4633, 26.0788,
12.0763

■ 84.8615, 94.7476,
108.4232

■ 34.9511, 22.3033,
7.3884

■ 33.1424, 19.5208,
4.2117

■ 31.9637, 17.6371,
2.3584

■ 31.3671, 16.6388,
1.5584

Harmonies

Analogous

The Analogous color harmony consists of three colors that are next to each other on the color wheel.



56.6102, 52.6378, 57.4098



55.7151, 52.6378, 48.8186



53.2830, 52.6378, 43.0834

Triad

The Triadic color harmony groups three colors that are evenly spaced from another and form a triangle on the color wheel.



55.7151, 52.6378, 48.8186



44.7778, 52.6378, 48.6692



49.9971, 52.6378, 77.3525

Complementary

The Complementary color scheme is a pair of colors which are on the opposite of each other on the color wheel.



55.7151, 52.6378, 48.8186



57.3147, 65.9680, 80.9468

Split Complementary

Split-complementary colors differ from the complementary color scheme. The scheme consists of three colors, the original color and two neighbors of the complement color.



46.9134, 52.6378, 74.3758



55.7151, 52.6378, 48.8186



43.9818, 52.6378, 57.2176

Square

The Square scheme is like the rectangle color scheme, but the four colors are evenly spaced on the color wheel.



55.7151, 52.6378, 48.8186



46.9691, 52.6378, 43.0040



44.7466, 52.6378, 66.7410



53.2224, 52.6378, 74.4902

Rectangle

The Rectangle color scheme consists of four colors that form a rectangle on the color wheel.



55.7151, 52.6378, 48.8186



51.1680, 52.6378, 41.3077



44.7466, 52.6378, 66.7410



48.9103, 52.6378, 76.9973

Sweetspot

The Sweet Spot groups the original color and five complimentary colors.



55.7165, 52.6402, 48.8197



88.4664, 90.6189, 95.0331



59.7187, 52.6304, 74.8607



18.7885, 19.1865, 20.0323



0.0000, 0.0000, 0.0000



20.3446, 21.4041, 23.3091

Same Dimension

The Same Dimension uses a secret algorithm to generate beautiful new colors.



55.7165, 52.6402, 48.8197



70.0453, 64.2262, 56.6787



61.0108, 63.2288, 50.5845



13.8217, 13.9293, 14.2669



18.1151, 9.6681, 0.9114



1.2951, 0.7490, 0.0763

Inverse Universe

The Inverse Universe completely reimagines the original color for something new.



57.3147, 65.9680, 80.9468



72.5563, 85.1893, 107.2268



51.5077, 54.3541, 79.0111



13.9881, 15.3153, 17.6066



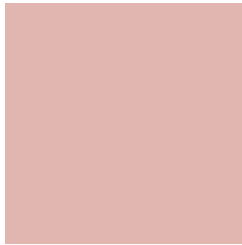
19.9913, 27.4521, 45.2935



1.4213, 1.9740, 3.1514

Previews

White Background



This preview shows how the XYZ color 55.7151, 52.6378, 48.8186 looks on a white background.

Color Contrast Check

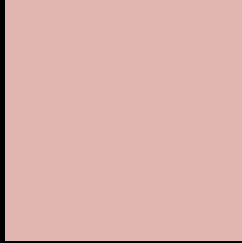
Large Text (above 18pt) WCAG AA × Fail

Any Text WCAG AA × Fail

Large Text (above 18pt) WCAG AAA × Fail

Any Text WCAG AAA × Fail

Black Background



This preview shows how the XYZ color 55.7151, 52.6378, 48.8186 looks on a black background.

Color Contrast Check

Large Text (above 18pt) WCAG AA ✓ Pass

Any Text WCAG AA ✓ Pass

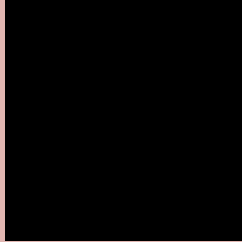
Large Text (above 18pt) WCAG AAA ✓ Pass

Any Text WCAG AAA ✓ Pass

If you want to check with other color combinations, try the [Color Contrast Checker](#).

XYZ 55.7151, 52.6378, 48.8186

Background



This preview shows how black text looks on a background with the XYZ color 55.7151, 52.6378, 48.8186.



This preview shows how white text looks on a background with the XYZ color 55.7151, 52.6378,

Color Blindness Simulation

Color vision deficiency is a very complex topic, and I could not describe the different causes any better than Wikipedia does, so if you want to learn more, you should check out their [article about color blindness](#).

Dichromacy



Original Color

55.7151, 52.6378, 48.8186

Protanopia

50.3630, 52.6448, 51.7630

Deuteranopia

53.8007, 52.5842, 48.3885



Tritanopia

57.4243, 52.4213, 57.5438

Trichromacy



Original Color

55.7151, 52.6378, 48.8186

Protanomaly

52.2339, 52.6716, 50.5936

Deuteranomaly

54.4922, 52.6312, 48.3611

Tritanomaly

56.6549, 52.3991, 54.1417

Monochromacy



Original Color

55.7151, 52.6378, 48.8186

Achromatopsia

51.2775, 53.9479, 58.7493

Achromatomaly

52.6674, 53.4369, 55.1154

CSS Examples

Text

The CSS property to change the color of the text to XYZ 55.7151, 52.6378, 48.8186 is called "color". The color property can be set on classes, ids or directly on the HTML element.

This example shows how text in the color `rgb(225, 182, 177)` looks like.

```
.text, #text, p{  
    color:rgb(225, 182, 177)  
}
```

If you want to add a text shadow in that color use the text-shadow property, you can generate a text shadow directly with our [CSS Text Shadow Generator](#).

Here you see how black text with a 4 pixel rgb(225, 182, 177) colored shadow looks like.

```
.shadow{ text-shadow: 4px 4px 2px rgb(225, 182, 177) }
```

Border

The CSS property to change the border of an element to XYZ 55.7151, 52.6378, 48.8186 is called "border". The border property can be set on classes, ids or directly on the HTML element.

This example shows the color as border, it can be applied via the CSS property "border" or "border-color".

```
.border, #border, table{ border:4px solid rgb(225, 182, 177) }
```


If only the border color should be changed use the property `border-color`.

```
.border{ border-color:rgb(225, 182, 177) }
```

If you want to add a box shadow in that color use:

Here you see how a box with a 4 pixel `rgb(225, 182, 177)` colored shadow looks like.

```
.boxshadow{ -moz-box-shadow:4px 4px 4px 4px rgb(225, 182, 177); -webkit-box-shadow:4px 4px 4px 4px rgb(225, 182, 177); box-shadow:4px 4px 4px 4px rgb(225, 182, 177) }
```

Background

The CSS property to change the background color of an element to XYZ 55.7151, 52.6378, 48.8186 is called "background". The background property can be set on classes, ids or directly on the HTML element.

```
.background, #background, body{  
background: rgb(225, 182, 177) }
```

If only the background color should be changed can be used:

```
.background{ background-color: rgb(225,  
182, 177) }
```

This example shows the color as background, it is applied via the CSS property "background".

To optimize and compress your CSS code, you can use our [online CSS compressor and optimizer](#) based on csstidy. If you want to create a linear or radial gradient as background or border, check our [CSS Gradient Generator](#).

Hey! You found this booklet interesting? Support Converting Colors with the new Membership Option!

The pro membership hides all ads, plus gives you double the colors in the color bucket, and more awesome pro features!

[Learn more, Memberships starting at \\$2.50/m!](#)

**Follow me
on Twitter!**

@ConvertingColor