

Converting Colors

XYZ(55.4989, 52.7723, 42.1668)

Have a look what the booklet for
XYZ(55.4989, 52.7723, 42.1668)
contains.

XYZ(55.4237, 52.6302, 42.3595)	3
<i>Conversions</i>	4
<i>Details</i>	6
<i>Harmonies</i>	12
<i>Previews</i>	24
<i>Color Blindness Simulation</i>	28
<i>CSS Examples</i>	31

Color

**XYZ(55.4237, 52.6302,
42.3595)**

Conversions

Conversions Part 1

Format	Color
Hex	E4B6A4
RGB	228, 182, 164
RGB Percent	89%, 71%, 64%
CMY	0.1059, 0.2863, 0.3569
CMYK	0.00, 0.20, 0.28, 0.11
HSL	17°, 54%, 77%
HSV	17°, 28%, 89%
XYZ	55.4237, 52.6302, 42.3595
YIQ	193.7020, 33.1940, 4.1540

Conversions

Conversions Part 2

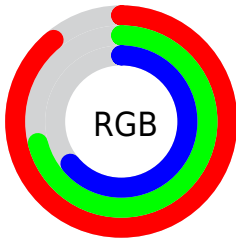
Format	Color
R _Y B	228, 189, 164
Decimal	14988964
CIE Lab	77.66, 14.03, 15.47
CIE LCh	78, 20.889, 47.795
Yxy	52.6302, 0.3685, 0.3499
Android (android.graphics.Color)	4293179044 (0xFFE4B6A4)
YUV	193.7020, -14.6431, 30.0793
Hunter-Lab	72.5467, 9.4125, 16.1637

Details

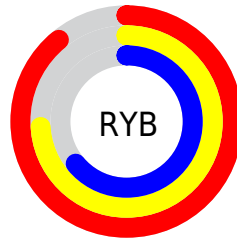
The XYZ color **55.4237, 52.6302, 42.3595** is a light color, and the websafe version is hex **FFCCCC**. A complement of this color would be **52.3594, 59.5854, 82.1405**, and the grayscale version is **51.1732, 53.8382, 58.6298**.

A 20% lighter version of the original color is **84.6007, 87.5235, 79.4526**, and **27.7881, 25.6410, 18.8139** is the 20% darker color. If you saturate the color by 10%, you get **50.3849, 45.5575, 31.4159**, and if you desaturate by 10%, it is **61.2271, 60.6408, 55.3802**.

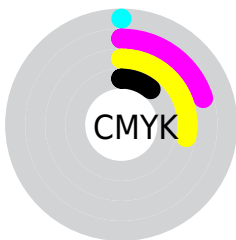
Distribution



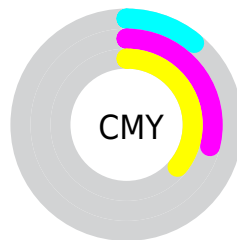
- Red (89%)
- Green (71%)
- Blue (64%)



- Red (89%)
- Yellow (74%)
- Blue (64%)



- Cyan (0%)
- Magenta (20%)
- Yellow (28%)
- Black (11%)





- Cyan (11%)
- Magenta (29%)
- Yellow (36%)

Brightness & Saturation Gradients


These gradients show how the XYZ color 55.4237, 52.6302, 42.3595 changes by changing the brightness by 10 percent. The first figure shows a shift by +10% for each color and the second figure -10%.


Similar to the brightness gradients but the following saturation gradients show a change of the XYZ color 55.4237, 52.6302, 42.3595 by changing the saturation by 10% instead.


 55.4237, 52.6302,
42.3595


 55.4237, 52.6302,
42.3595


397.6264,
396.8647, 371.8146

 39.9762, 37.5076,
29.0552

 97.3062, 94.0600,
80.0194

 27.7041, 25.6008,
18.8767


 124.4719,
121.1360, 105.2121

 18.2421, 16.5252,
11.4053


156.2744,
152.9653, 135.2046

 11.2247, 9.8966,
6.2225

193.0791,
189.9323, 170.4156

 6.2866, 5.3304,
2.9099

235.2512,
232.4213, 211.2636

 3.0624, 2.4424,
1.0488

283.1563,

 1.1869, 0.8476,

280.8168, 258.1670

0.0000

337.1595,
335.5031, 311.5445

■ 0.0960, 0.0000,
0.0000

■ 0.0000, 0.0000,
0.0000

■ 55.4237, 52.6302,
42.3595

■ 55.4237, 52.6302,
42.3595

■ 50.3849, 45.5575,
31.4159

■ 61.2271, 60.6408,
55.3802

■ 46.0734, 39.3806,
22.4378

■ 67.8221, 69.6150,
70.5753

■ 42.4547, 34.0647,
15.3079

■ 75.2393, 79.5864,
88.0396

■ 39.4898, 29.5700,
9.8951

■ 83.4740, 90.5721,
107.6903

■ 37.1352, 25.8533,
6.0507

■ 85.8050, 95.2340,
108.4673

■ 35.3415, 22.8667,
3.6002

■ 34.0444, 20.5543,
2.2994

■ 33.8364, 20.1768,
2.1111

Harmonies

Analogous

The Analogous color harmony consists of three colors that are next to each other on the color wheel.



57.7878, 52.6302, 50.7738



55.4237, 52.6302, 42.3595



51.6832, 52.6302, 38.2007

Triad

The Triadic color harmony groups three colors that are evenly spaced from another and form a triangle on the color wheel.



55.4237, 52.6302, 42.3595



42.8108, 52.6302, 52.7309



52.4344, 52.6302, 81.1968

Complementary

The Complementary color scheme is a pair of colors which are on the opposite of each other on the color wheel.



55.4237, 52.6302, 42.3595



52.3594, 59.5854, 82.1405

Split Complementary

Split-complementary colors differ from the complementary color scheme. The scheme consists of three colors, the original color and two neighbors of the complement color.



48.3996, 52.6302, 81.9069



55.4237, 52.6302, 42.3595



42.9877, 52.6302, 64.3742

Square

The Square scheme is like the rectangle color scheme, but the four colors are evenly spaced on the color wheel.



55.4237, 52.6302, 42.3595



44.4888, 52.6302, 43.6256



44.9859, 52.6302, 75.4085



55.9990, 52.6302, 73.5820

Rectangle

The Rectangle color scheme consists of four colors that form a rectangle on the color wheel.



55.4237, 52.6302, 42.3595



48.9776, 52.6302, 37.9744



44.9859, 52.6302, 75.4085



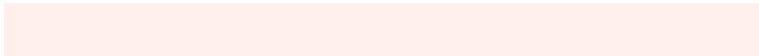
51.0840, 52.6302, 82.2846

Sweetspot

The Sweet Spot groups the original color and five complimentary colors.



55.4251, 52.6326, 42.3606



87.4376, 89.7550, 91.0106



57.0203, 47.7453, 67.7951



18.4254, 18.8189, 18.8056



0.0000, 0.0000, 0.0000



20.3446, 21.4041, 23.3091

Same Dimension

The Same Dimension uses a secret algorithm to generate beautiful new colors.



55.4251, 52.6326, 42.3606



67.3375, 62.1016, 45.6302



62.5072, 66.7968, 44.7213



14.7054, 15.0248, 15.0295



19.6249, 11.8239, 1.2479



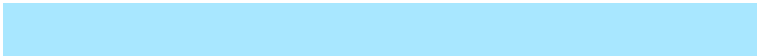
1.5270, 1.0273, 0.1178

Inverse Universe

The Inverse Universe completely reimagines the original color for something new.



52.3594, 59.5854, 82.1405



62.7291, 72.5113, 105.2976



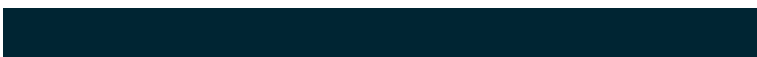
45.4208, 45.7081, 79.8276



14.4468, 15.6150, 18.3969



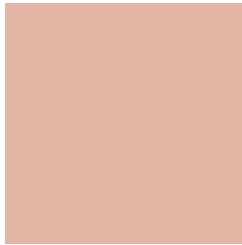
15.8425, 18.7471, 45.1667



1.2484, 1.5406, 3.3635

Previews

White Background



This preview shows how the XYZ color 55.4237, 52.6302, 42.3595 looks on a white background.

Color Contrast Check

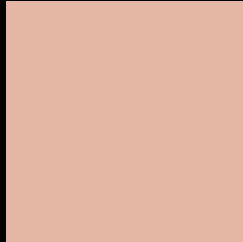
Large Text (above 18pt) WCAG AA × Fail

Any Text WCAG AA × Fail

Large Text (above 18pt) WCAG AAA × Fail

Any Text WCAG AAA × Fail

Black Background



This preview shows how the XYZ color 55.4237, 52.6302, 42.3595 looks on a black background.

Color Contrast Check

Large Text (above 18pt) WCAG AA ✓ Pass

Any Text WCAG AA ✓ Pass

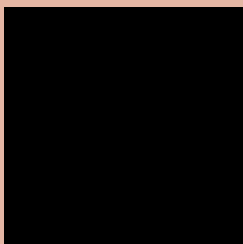
Large Text (above 18pt) WCAG AAA ✓ Pass

Any Text WCAG AAA ✓ Pass

If you want to check with other color combinations, try the [Color Contrast Checker](#).

XYZ 55.4237, 52.6302, 42.3595

Background



This preview shows how black text looks on a background with the XYZ color 55.4237, 52.6302, 42.3595.



This preview shows how white text looks on a background with the XYZ color 55.4237, 52.6302,

Color Blindness Simulation

Color vision deficiency is a very complex topic, and I could not describe the different causes any better than Wikipedia does, so if you want to learn more, you should check out their [article about color blindness](#).

Dichromacy



Original Color

55.4237, 52.6302, 42.3595

Protanopia

50.0985, 52.9814, 45.1221

Deuteranopia

53.7786, 52.7144, 41.9908



Tritanopia

58.3898, 52.6355, 56.9514

Trichromacy



Original Color

55.4237, 52.6302, 42.3595

Protanomaly

51.8222, 52.6053, 43.9817

Deuteranomaly

54.4918, 52.7726, 41.9644

Tritanomaly

57.1967, 52.4406, 51.3634

Monochromacy



Original Color

55.4237, 52.6302, 42.3595

Achromatopsia

51.2775, 53.9479, 58.7493

Achromatomaly

52.4143, 53.3676, 52.3382

CSS Examples

Text

The CSS property to change the color of the text to XYZ 55.4237, 52.6302, 42.3595 is called "color". The color property can be set on classes, ids or directly on the HTML element.

This example shows how text in the color `rgb(228, 182, 164)` looks like.

```
.text, #text, p{  
    color:rgb(228, 182, 164)  
}
```

If you want to add a text shadow in that color use the text-shadow property, you can generate a text shadow directly with our [CSS Text Shadow Generator](#).

Here you see how black text with a 4 pixel rgb(228, 182, 164) colored shadow looks like.

```
.shadow{ text-shadow: 4px 4px 2px rgb(228, 182, 164) }
```

Border

The CSS property to change the border of an element to XYZ 55.4237, 52.6302, 42.3595 is called "border". The border property can be set on classes, ids or directly on the HTML element.

This example shows the color as border, it can be applied via the CSS property "border" or "border-color".

```
.border, #border, table{ border:4px solid rgb(228, 182, 164) }
```


If only the border color should be changed use the property `border-color`.

```
.border{ border-color:rgb(228, 182, 164) }
```

If you want to add a box shadow in that color use:

Here you see how a box with a 4 pixel `rgb(228, 182, 164)` colored shadow looks like.

```
.boxshadow{ -moz-box-shadow:4px 4px 4px  
4px rgb(228, 182, 164); -webkit-box-  
shadow:4px 4px 4px 4px rgb(228, 182, 164);  
box-shadow:4px 4px 4px 4px rgb(228, 182,  
164) }
```

Background

The CSS property to change the background color of an element to XYZ 55.4237, 52.6302, 42.3595 is called "background". The background property can be set on classes, ids or directly on the HTML element.

```
.background, #background, body{  
background: rgb(228, 182, 164) }
```

If only the background color should be changed can be used:

```
.background{ background-color: rgb(228,  
182, 164) }
```

This example shows the color as background, it is applied via the CSS property "background".

To optimize and compress your CSS code, you can use our [online CSS compressor and optimizer](#) based on csstidy. If you want to create a linear or radial gradient as background or border, check our [CSS Gradient Generator](#).

Hey! You found this booklet interesting? Support Converting Colors with the new Membership Option!

The pro membership hides all ads, plus gives you double the colors in the color bucket, and more awesome pro features!

[Learn more, Memberships starting at \\$2.50/m!](#)

**Follow me
on Twitter!**

@ConvertingColor