

# Converting Colors

XYZ(55.5917, 56.0530, 59.0111)

Have a look what the booklet for  
XYZ(55.5917, 56.0530, 59.0111)  
contains.

<b>XYZ(55.6077, 56.1803, 58.9520)</b> .....	3
<b><i>Conversions</i></b> .....	4
<b><i>Details</i></b> .....	6
<b><i>Harmonies</i></b> .....	12
<b><i>Previews</i></b> .....	24
<b><i>Color Blindness Simulation</i></b> .....	28
<b><i>CSS Examples</i></b> .....	31

# Color

**XYZ(55.6077, 56.1803,  
58.9520)**

# Conversions

## Conversions Part 1

Format	Color
Hex	D2C2C2
RGB	210, 194, 194
RGB Percent	82%, 76%, 76%
CMY	0.1765, 0.2392, 0.2392
CMYK	0.00, 0.08, 0.08, 0.18
HSL	0°, 15%, 79%
HSV	0°, 8%, 82%
XYZ	55.6077, 56.1803, 58.9520
YIQ	198.7840, 9.5360, 3.3920

# Conversions

## Conversions Part 2

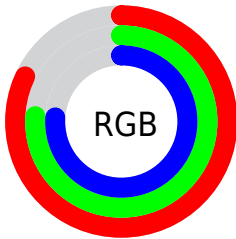
Format	Color
R <sub>Y</sub> B	210, 194, 194
Decimal	13812418
CIE Lab	79.72, 5.62, 2.02
CIE LCh	80, 5.967, 19.786
Yxy	56.1803, 0.3257, 0.3290
Android (android.graphics.Color)	4292002498 (0xFFD2C2C2)
YUV	198.7840, -2.3585, 9.8364
Hunter-Lab	74.9535, 1.2597, 5.8350

# Details

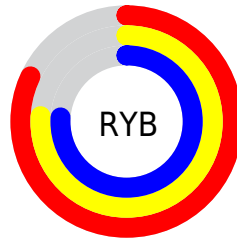
The XYZ color **55.6077, 56.1803, 58.9520** is a light color, and the websafe version is hex **CCCCCC**. A complement of this color would be **56.9273, 62.2144, 69.9814**, and the grayscale version is **54.1653, 56.9861, 62.0579**.

A 20% lighter version of the original color is **92.6809, 96.5333, 104.1905**, and **27.6293, 27.6182, 28.6856** is the 20% darker color. If you saturate the color by 10%, you get **49.0670, 46.6100, 45.9464**, and if you desaturate by 10%, it is **63.1450, 67.2092, 73.9356**.

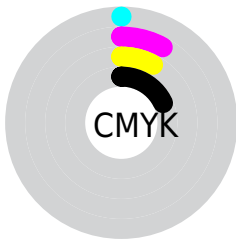
# Distribution



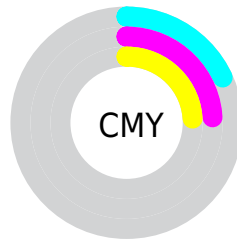
- Red (82%)
- Green (76%)
- Blue (76%)



- Red (82%)
- Yellow (76%)
- Blue (76%)



- Cyan (0%)
- Magenta (8%)
- Yellow (8%)
- Black (18%)



- Cyan (18%)
- Magenta (24%)
- Yellow (24%)

# Brightness & Saturation Gradients

These gradients show how the XYZ color 55.6077, 56.1803, 58.9520 changes by changing the brightness by 10 percent. The first figure shows a shift by +10% for each color and the second figure -10%.

Similar to the brightness gradients but the following saturation gradients show a change of the XYZ color 55.6077, 56.1803, 58.9520 by changing the saturation by 10% instead.



■ 55.6077, 56.1803,  
58.9520

■ 55.6077, 56.1803,  
58.9520

398.3104,  
410.3706, 438.4209

■ 40.1242, 40.3475,  
42.1547

■ 97.5739, 99.2681,  
104.8363

■ 27.8201, 27.8096,  
28.8960

124.7874,  
127.2920, 134.7605

■ 18.3298, 18.1822,  
18.7572

156.6415,  
160.1483, 169.8973

■ 11.2882, 11.0809,  
11.3200

193.5018,  
198.2214, 210.6654

■ 6.3297, 6.1212,  
6.1656

235.7334,  
241.8959, 257.4833

■ 3.0891, 2.9189,  
2.8756

283.7018,

■ 1.2011, 1.0896,

291.5559, 310.7694

1.0315

337.7724,  
347.5861, 370.9425

■ 0.1072, 0.0000,  
0.0000

■ 0.0000, 0.0000,  
0.0000

■ 55.6077, 56.1803,  
58.9520

■ 55.6077, 56.1803,  
58.9520

■ 49.0670, 46.6100,  
45.9464

■ 63.1450, 67.2092,  
73.9356

■ 43.4769, 38.4302,  
34.8326

■ 71.7132, 79.7462,  
90.9709

■ 38.7944, 31.5785,  
25.5237

■ 80.3886, 92.4417,  
108.2139

■ 34.9717, 25.9848,  
17.9245

■ 31.9566, 21.5728,  
11.9311

■ 29.6912, 18.2576,  
7.4282

■ 28.1098, 15.9432,  
4.2852

■ 27.1354, 14.5171,  
2.3492

■ 26.6608, 13.8223,  
1.4064

# Harmonies

## Analogous

The Analogous color harmony consists of three colors that are next to each other on the color wheel.



55.7106, 56.1803, 62.3551



55.6077, 56.1803, 58.9520



54.9077, 56.1803, 56.2422

# Triad

The Triadic color harmony groups three colors that are evenly spaced from another and form a triangle on the color wheel.



55.6077, 56.1803, 58.9520



51.6478, 56.1803, 56.9857



52.9879, 56.1803, 67.9364

# Complementary

The Complementary color scheme is a pair of colors which are on the opposite of each other on the color wheel.



55.6077, 56.1803, 58.9520



56.9273, 62.2144, 69.9814

# Split Complementary

Split-complementary colors differ from the complementary color scheme. The scheme consists of three colors, the original color and two neighbors of the complement color.



51.9157, 56.1803, 66.3792



55.6077, 56.1803, 58.9520



51.1497, 56.1803, 60.0016

# Square

The Square scheme is like the rectangle color scheme, but the four colors are evenly spaced on the color wheel.



55.6077, 56.1803, 58.9520



52.6172, 56.1803, 55.1369



51.2470, 56.1803, 63.4446



54.1858, 56.1803, 67.6296



# Rectangle

The Rectangle color scheme consists of four colors that form a rectangle on the color wheel.



55.6077, 56.1803, 58.9520



54.2023, 56.1803, 55.1527



51.2470, 56.1803, 63.4446



52.6011, 56.1803, 67.6114

# Sweetspot

The Sweet Spot groups the original color and five complimentary colors.



55.6093, 56.1828, 58.9532



92.6346, 96.4657, 104.0977



57.5036, 56.9391, 68.9328



19.8529, 20.6846, 22.3315



0.0000, 0.0000, 0.0000



20.3446, 21.4041, 23.3091

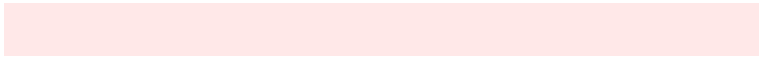


# Same Dimension

The Same Dimension uses a secret algorithm to generate beautiful new colors.



55.6093, 56.1828, 58.9532



84.6848, 84.8335, 88.2923



57.4371, 59.8384, 59.5625



11.8090, 11.8087, 12.2689



16.2128, 8.3587, 0.7589



0.9066, 0.4675, 0.0425

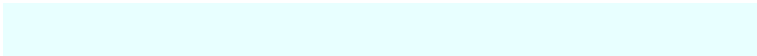


# Inverse Universe

The Inverse Universe completely reimagines the original color for something new.



56.9273, 62.2144, 69.9814



87.1032, 95.9007, 108.5276



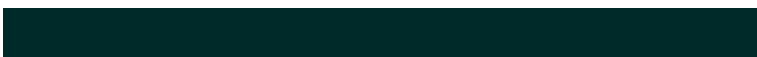
55.0022, 58.3643, 69.3398



12.1582, 13.4066, 15.1906



21.1465, 30.9396, 42.0499

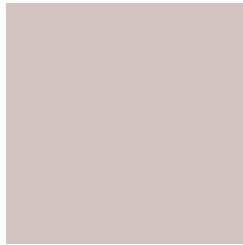


1.1825, 1.7301, 2.3512



# Previews

## White Background



This preview shows how the XYZ color 55.6077, 56.1803, 58.9520 looks on a white background.

## Color Contrast Check

Large Text (above 18pt) WCAG AA × Fail

Any Text WCAG AA × Fail

Large Text (above 18pt) WCAG AAA × Fail

Any Text WCAG AAA × Fail



# Black Background



This preview shows how the XYZ color 55.6077, 56.1803, 58.9520 looks on a black background.

## Color Contrast Check

Large Text (above 18pt) WCAG AA ✓ Pass

Any Text WCAG AA ✓ Pass

Large Text (above 18pt) WCAG AAA ✓ Pass

Any Text WCAG AAA ✓ Pass

If you want to check with other color combinations, try the [Color Contrast Checker](#).

# XYZ 55.6077, 56.1803, 58.9520

## Background



This preview shows how black text looks on a background with the XYZ color 55.6077, 56.1803, 58.9520.



This preview shows how white text looks on a background with the XYZ color 55.6077, 56.1803,



# Color Blindness Simulation

Color vision deficiency is a very complex topic, and I could not describe the different causes any better than Wikipedia does, so if you want to learn more, you should check out their [article about color blindness](#).

## Dichromacy



### Original Color

55.6077, 56.1803, 58.9520

### Protanopia

54.2872, 56.4746, 60.2640

### Deuteranopia

57.3946, 56.1072, 59.4345



## Tritanopia

57.2635, 56.2013, 66.8613

# Trichromacy



## Original Color

55.6077, 56.1803, 58.9520

## Protanomaly

54.7671, 56.3991, 59.6293

## Deuteranomaly

56.7243, 56.0865, 59.4658

## Tritanomaly

56.5946, 56.2531, 63.7522

# Monochromacy



## Original Color

55.6077, 56.1803, 58.9520

## Achromatopsia

54.2854, 57.1125, 62.1955

## Achromatomaly

54.6729, 56.6602, 60.8783

# CSS Examples

## Text

The CSS property to change the color of the text to XYZ 55.6077, 56.1803, 58.9520 is called "color". The color property can be set on classes, ids or directly on the HTML element.

This example shows how text in the color `rgb(210, 194, 194)` looks like.

```
.text, #text, p{  
    color:rgb(210, 194, 194)  
}
```

If you want to add a text shadow in that color use the text-shadow property, you can generate a text shadow directly with our [CSS Text Shadow Generator](#).

Here you see how black text with a 4 pixel rgb(210, 194, 194) colored shadow looks like.

```
.shadow{ text-shadow: 4px 4px 2px rgb(210, 194, 194) }
```

## Border

The CSS property to change the border of an element to XYZ 55.6077, 56.1803, 58.9520 is called "border". The border property can be set on classes, ids or directly on the HTML element.

This example shows the color as border, it can be applied via the CSS property "border" or "border-color".

```
.border, #border, table{ border:4px solid rgb(210, 194, 194) }
```



If only the border color should be changed use the property `border-color`.

```
.border{ border-color:rgb(210, 194, 194) }
```

If you want to add a box shadow in that color use:

Here you see how a box with a 4 pixel `rgb(210, 194, 194)` colored shadow looks like.

```
.boxshadow{ -moz-box-shadow:4px 4px 4px  
4px rgb(210, 194, 194); -webkit-box-  
shadow:4px 4px 4px 4px rgb(210, 194, 194);  
box-shadow:4px 4px 4px 4px rgb(210, 194,  
194) }
```

# Background

The CSS property to change the background color of an element to XYZ 55.6077, 56.1803, 58.9520 is called "background". The background property can be set on classes, ids or directly on the HTML element.

```
.background, #background, body{  
background: rgb(210, 194, 194) }
```

If only the background color should be changed can be used:

```
.background{ background-color: rgb(210,  
194, 194) }
```

This example shows the color as background, it is applied via the CSS property "background".

To optimize and compress your CSS code, you can use our [online CSS compressor and optimizer](#) based on csstidy. If you want to create a linear or radial gradient as background or border, check our [CSS Gradient Generator](#).

Hey! You found this booklet interesting? Support Converting Colors with the new Membership Option!

The pro membership hides all ads, plus gives you double the colors in the color bucket, and more awesome pro features!

**[Learn more, Memberships starting at \\$2.50/m!](#)**

**Follow me  
on Twitter!**

@ConvertingColor