

Converting Colors

XYZ(55.7021, 55.1238, 54.7173)

Have a look what the booklet for
XYZ(55.7021, 55.1238, 54.7173)
contains.

XYZ(55.7020, 55.0137, 54.6966)	3
<i>Conversions</i>	4
<i>Details</i>	6
<i>Harmonies</i>	12
<i>Previews</i>	24
<i>Color Blindness Simulation</i>	28
<i>CSS Examples</i>	31

Color

**XYZ(55.7020, 55.0137,
54.6966)**

Conversions

Conversions Part 1

Format	Color
Hex	D8BEBB
RGB	216, 190, 187
RGB Percent	85%, 75%, 73%
CMY	0.1529, 0.2549, 0.2667
CMYK	0.00, 0.12, 0.13, 0.15
HSL	6°, 27%, 79%
HSV	6°, 13%, 85%
XYZ	55.7020, 55.0137, 54.6966
YIQ	197.4320, 16.4590, 4.5790

Conversions

Conversions Part 2

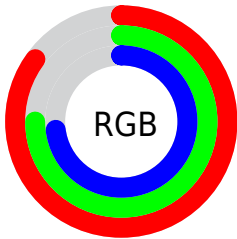
Format	Color
R _Y B	216, 190, 187
Decimal	14204603
CIE Lab	79.05, 8.73, 4.89
CIE LCh	79, 10.004, 29.264
Yxy	55.0137, 0.3367, 0.3326
Android (android.graphics.Color)	4292394683 (0xFFD8BEBB)
YUV	197.4320, -5.1430, 16.2841
Hunter-Lab	74.1712, 4.2525, 8.1972

Details

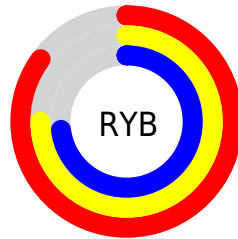
The XYZ color **55.7020, 55.0137, 54.6966** is a light color, and the websafe version is hex **CCCCCC**. A complement of this color would be **56.6821, 63.1098, 74.1603**, and the grayscale version is **53.3565, 56.1352, 61.1312**.

A 20% lighter version of the original color is **90.3734, 93.6426, 98.1057**, and **27.9467, 27.1896, 26.3294** is the 20% darker color. If you saturate the color by 10%, you get **49.6428, 46.3213, 42.1136**, and if you desaturate by 10%, it is **62.6693, 64.9645, 69.2996**.

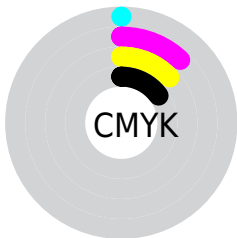
Distribution



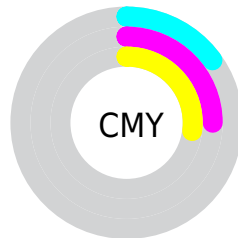
- Red (85%)
- Green (75%)
- Blue (73%)



- Red (85%)
- Yellow (75%)
- Blue (73%)



- Cyan (0%)
- Magenta (12%)
- Yellow (13%)
- Black (15%)





- Cyan (15%)
- Magenta (25%)
- Yellow (27%)

Brightness & Saturation Gradients

These gradients show how the XYZ color 55.7020, 55.0137, 54.6966 changes by changing the brightness by 10 percent. The first figure shows a shift by +10% for each color and the second figure -10%.


Similar to the brightness gradients but the following saturation gradients show a change of the XYZ color 55.7020, 55.0137, 54.6966 by changing the saturation by 10% instead.


 55.7020, 55.0137,
54.6966

 55.7020, 55.0137,
54.6966


398.6608,
405.9639, 422.0103

 40.2001, 39.4127,
38.7619


 97.7111, 97.5610,
98.5630

 27.8795, 27.0809,
26.2681


124.9490,
125.2761, 127.3317

 18.3748, 17.6340,
16.7968


156.8296,
157.7981, 161.2156

 11.3208, 10.6875,
9.9293

193.7183,
195.5112, 200.6331

 6.3519, 5.8571,
5.2471

235.9804,
238.8000, 246.0028

 3.1029, 2.7584,
2.3317

283.9812,

 1.2084, 1.0069,

288.0487, 297.7432

0.7489

338.0862,
343.6419, 356.2728

■ 0.1130, 0.0000,
0.0000

■ 0.0000, 0.0000,
0.0000

■ 55.7020, 55.0137,
54.6966

■ 55.7020, 55.0137,
54.6966

■ 49.6428, 46.3213,
42.1136

■ 62.6693, 64.9645,
69.2996

■ 44.4497, 38.8300,
31.4582

■ 70.5752, 76.2132,
86.0023

■ 40.0845, 32.4893,
22.6361

■ 79.4545, 88.8069,
104.8845

■ 36.5042, 27.2419,
15.5439

■ 82.1291, 93.3391,
108.2953

■ 33.6617, 23.0260,
10.0676

■ 31.5051, 19.7733,
6.0797

■ 29.9755, 17.4072,
3.4332

■ 29.0039, 15.8395,
1.9513

■ 28.6133, 15.1873,
1.4234

Harmonies

Analogous

The Analogous color harmony consists of three colors that are next to each other on the color wheel.



56.2131, 55.0137, 60.0415



55.7020, 55.0137, 54.6966



54.2710, 55.0137, 50.9578

Triad

The Triadic color harmony groups three colors that are evenly spaced from another and form a triangle on the color wheel.



55.7020, 55.0137, 54.6966



49.0652, 55.0137, 54.4673



52.2397, 55.0137, 71.5525

Complementary

The Complementary color scheme is a pair of colors which are on the opposite of each other on the color wheel.



55.7020, 55.0137, 54.6966



56.6821, 63.1098, 74.1603

Split Complementary

Split-complementary colors differ from the complementary color scheme. The scheme consists of three colors, the original color and two neighbors of the complement color.



50.3556, 55.0137, 69.8327



55.7020, 55.0137, 54.6966



48.5516, 55.0137, 59.7598

Square

The Square scheme is like the rectangle color scheme, but the four colors are evenly spaced on the color wheel.



55.7020, 55.0137, 54.6966



50.4387, 55.0137, 50.8315



49.0181, 55.0137, 65.4246



54.1837, 55.0137, 69.9889

Rectangle

The Rectangle color scheme consists of four colors that form a rectangle on the color wheel.



55.7020, 55.0137, 54.6966



53.0056, 55.0137, 49.7564



49.0181, 55.0137, 65.4246



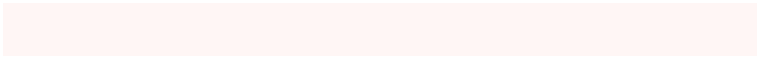
51.5786, 55.0137, 71.3375

Sweetspot

The Sweet Spot groups the original color and five complimentary colors.



55.7035, 55.0161, 54.6978



90.6031, 93.6647, 99.5300



58.1128, 54.9495, 70.5614



19.2191, 19.8005, 20.9383



0.0000, 0.0000, 0.0000



20.3446, 21.4041, 23.3091

Same Dimension

The Same Dimension uses a secret algorithm to generate beautiful new colors.



55.7035, 55.0161, 54.6978



78.5852, 76.4894, 74.3744



58.9772, 61.5636, 55.7890



12.5257, 12.6257, 12.9375



16.9734, 9.0640, 0.8549



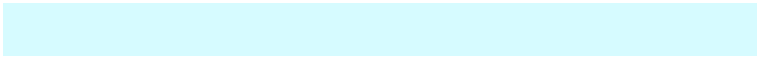
1.0597, 0.6187, 0.0636

Inverse Universe

The Inverse Universe completely reimagines the original color for something new.



56.6821, 63.1098, 74.1603



80.2665, 90.3994, 107.8261



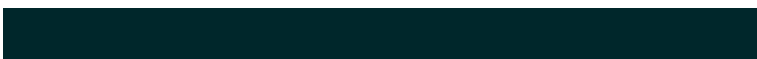
53.2204, 56.1864, 73.0063



12.6772, 13.8778, 15.9480



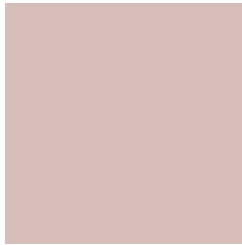
18.7526, 25.7671, 42.4383



1.1634, 1.6188, 2.5705

Previews

White Background



This preview shows how the XYZ color 55.7020, 55.0137, 54.6966 looks on a white background.

Color Contrast Check

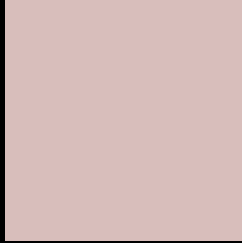
Large Text (above 18pt) WCAG AA × Fail

Any Text WCAG AA × Fail

Large Text (above 18pt) WCAG AAA × Fail

Any Text WCAG AAA × Fail

Black Background



This preview shows how the XYZ color 55.7020, 55.0137, 54.6966 looks on a black background.

Color Contrast Check

Large Text (above 18pt) WCAG AA ✓ Pass

Any Text WCAG AA ✓ Pass

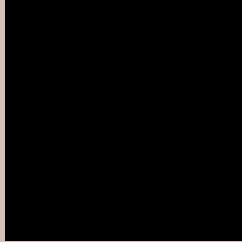
Large Text (above 18pt) WCAG AAA ✓ Pass

Any Text WCAG AAA ✓ Pass

If you want to check with other color combinations, try the [Color Contrast Checker](#).

XYZ 55.7020, 55.0137, 54.6966

Background



This preview shows how black text looks on a background with the XYZ color 55.7020, 55.0137, 54.6966.



This preview shows how white text looks on a background with the XYZ color 55.7020, 55.0137,

Color Blindness Simulation

Color vision deficiency is a very complex topic, and I could not describe the different causes any better than Wikipedia does, so if you want to learn more, you should check out their [article about color blindness](#).

Dichromacy



Original Color

55.7020, 55.0137, 54.6966

Protanopia

52.8968, 55.1654, 56.5752

Deuteranopia

56.0807, 54.8885, 54.6525



Tritanopia

57.5573, 55.1361, 63.4859

Trichromacy



Original Color

55.7020, 55.0137, 54.6966

Protanomaly

53.7089, 54.9359, 55.9170

Deuteranomaly

55.7825, 54.7348, 54.6385

Tritanomaly

56.8909, 55.1781, 60.4753

Monochromacy



Original Color

55.7020, 55.0137, 54.6966

Achromatopsia

53.0703, 55.8340, 60.8033

Achromatomaly

53.8193, 55.2712, 58.2839

CSS Examples

Text

The CSS property to change the color of the text to XYZ 55.7020, 55.0137, 54.6966 is called "color". The color property can be set on classes, ids or directly on the HTML element.

This example shows how text in the color `rgb(216, 190, 187)` looks like.

```
.text, #text, p{  
    color:rgb(216, 190, 187)  
}
```

If you want to add a text shadow in that color use the text-shadow property, you can generate a text shadow directly with our [CSS Text Shadow Generator](#).

Here you see how black text with a 4 pixel rgb(216, 190, 187) colored shadow looks like.

```
.shadow{ text-shadow: 4px 4px 2px rgb(216, 190, 187) }
```

Border

The CSS property to change the border of an element to XYZ 55.7020, 55.0137, 54.6966 is called "border". The border property can be set on classes, ids or directly on the HTML element.

This example shows the color as border, it can be applied via the CSS property "border" or "border-color".

```
.border, #border, table{ border:4px solid rgb(216, 190, 187) }
```


If only the border color should be changed use the property `border-color`.

```
.border{ border-color:rgb(216, 190, 187) }
```

If you want to add a box shadow in that color use:

Here you see how a box with a 4 pixel `rgb(216, 190, 187)` colored shadow looks like.

```
.boxshadow{ -moz-box-shadow:4px 4px 4px  
4px rgb(216, 190, 187); -webkit-box-  
shadow:4px 4px 4px 4px rgb(216, 190, 187);  
box-shadow:4px 4px 4px 4px rgb(216, 190,  
187) }
```

Background

The CSS property to change the background color of an element to XYZ 55.7020, 55.0137, 54.6966 is called "background". The background property can be set on classes, ids or directly on the HTML element.

```
.background, #background, body{  
background: rgb(216, 190, 187) }
```

If only the background color should be changed can be used:

```
.background{ background-color: rgb(216,  
190, 187) }
```

This example shows the color as background, it is applied via the CSS property "background".

To optimize and compress your CSS code, you can use our [online CSS compressor and optimizer](#) based on csstidy. If you want to create a linear or radial gradient as background or border, check our [CSS Gradient Generator](#).

Hey! You found this booklet interesting? Support Converting Colors with the new Membership Option!

The pro membership hides all ads, plus gives you double the colors in the color bucket, and more awesome pro features!

[Learn more, Memberships starting at \\$2.50/m!](#)

**Follow me
on Twitter!**

@ConvertingColor