

Converting Colors

XYZ(55.8028, 55.7132, 61.8466)

Have a look what the booklet for
XYZ(55.8028, 55.7132, 61.8466)
contains.

XYZ(55.7368, 55.5244, 61.8125)	3
<i>Conversions</i>	4
<i>Details</i>	6
<i>Harmonies</i>	12
<i>Previews</i>	24
<i>Color Blindness Simulation</i>	28
<i>CSS Examples</i>	31

Color

**XYZ(55.7368, 55.5244,
61.8125)**

Conversions

Conversions Part 1

Format	Color
Hex	D2C0C7
RGB	210, 192, 199
RGB Percent	82%, 75%, 78%
CMY	0.1765, 0.2470, 0.2196
CMYK	0.00, 0.09, 0.05, 0.18
HSL	337°, 17%, 79%
HSV	337°, 9%, 82%
XYZ	55.7368, 55.5244, 61.8125
YIQ	198.1800, 8.4810, 5.9930

Conversions

Conversions Part 2

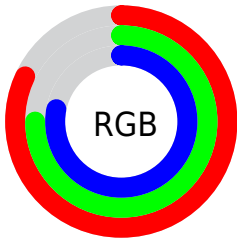
Format	Color
R _Y B	210, 192, 199
Decimal	13811911
CIE Lab	79.34, 7.55, -1.22
CIE LCh	79, 7.648, 350.823
Yxy	55.5244, 0.3220, 0.3208
Android (android.graphics.Color)	4292001991 (0xFFD2C0C7)
YUV	198.1800, 0.4043, 10.3661
Hunter-Lab	74.5147, 3.1168, 2.9772

Details

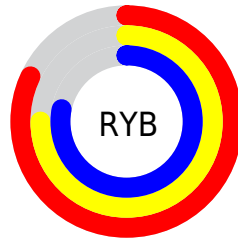
The XYZ color **55.7368, 55.5244, 61.8125** is a light color, and the websafe version is hex **CCCCCC**. A complement of this color would be **55.5664, 61.6129, 65.4667**, and the grayscale version is **53.7812, 56.5821, 61.6179**.

A 20% lighter version of the original color is **92.8574, 95.6148, 108.1691**, and **27.8610, 27.4781, 30.6234** is the 20% darker color. If you saturate the color by 10%, you get **50.0231, 46.3817, 52.8627**, and if you desaturate by 10%, it is **62.2374, 66.0381, 71.6461**.

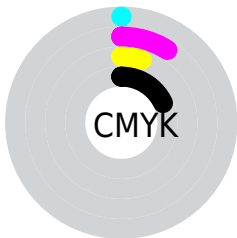
Distribution



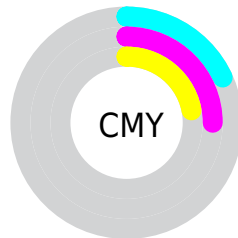
- Red (82%)
- Green (75%)
- Blue (78%)



- Red (82%)
- Yellow (75%)
- Blue (78%)



- Cyan (0%)
- Magenta (9%)
- Yellow (5%)
- Black (18%)



- Cyan (18%)
- Magenta (25%)
- Yellow (22%)

Brightness & Saturation Gradients

These gradients show how the XYZ color 55.7368, 55.5244, 61.8125 changes by changing the brightness by 10 percent. The first figure shows a shift by +10% for each color and the second figure -10%.

Similar to the brightness gradients but the following saturation gradients show a change of the XYZ color 55.7368, 55.5244, 61.8125 by changing the saturation by 10% instead.

■ 55.7368, 55.5244,
61.8125

■ 55.7368, 55.5244,
61.8125

398.7900,
407.8967, 449.2356

■ 40.2281, 39.8217,
44.4464

■ 97.7617, 98.3089,
109.0235

■ 27.9014, 27.3996,
30.6818

125.0086,
126.1594, 139.7054

■ 18.3915, 17.8735,
20.1003

156.8990,
158.8281, 175.6630

■ 11.3328, 10.8592,
12.2831

193.7981,
196.6993, 217.3149

■ 6.3601, 5.9723,
6.8119

236.0715,
240.1573, 265.0796

■ 3.1080, 2.8282,
3.2681

284.0843,

■ 1.2111, 1.0427,

289.5866, 319.3755

1.2331

338.2020,
345.3716, 380.6214

■ 0.1151, 0.0000,
0.0060

■ 0.0000, 0.0000,
0.0000

■ 55.7368, 55.5244,
61.8125

■ 55.7368, 55.5244,
61.8125

■ 50.0231, 46.3817,
52.8627

■ 62.2374, 66.0381,
71.6461

■ 45.0606, 38.5459,
44.7678

■ 69.5490, 77.9688,
82.3844

■ 40.8180, 31.9589,
37.5020

■ 77.6993, 91.3660,
94.0514

■ 37.2600, 26.5552,
31.0371

■ 79.6482, 92.1456,
104.3142

■ 34.3479, 22.2632,
25.3430

■ 80.3887, 92.4418,
108.2139

■ 32.0392, 19.0035,
20.3873

■ 30.2857, 16.6863,
16.1350

■ 29.0313, 15.2056,
12.5473

■ 28.1912, 14.3990,
9.5743

Harmonies

Analogous

The Analogous color harmony consists of three colors that are next to each other on the color wheel.



55.0915, 55.5244, 65.9456



55.7368, 55.5244, 61.8125



55.5765, 55.5244, 57.5063

Triad

The Triadic color harmony groups three colors that are evenly spaced from another and form a triangle on the color wheel.



55.7368, 55.5244, 61.8125



51.7338, 55.5244, 52.9073



50.9347, 55.5244, 67.2369

Complementary

The Complementary color scheme is a pair of colors which are on the opposite of each other on the color wheel.



55.7368, 55.5244, 61.8125



55.5664, 61.6129, 65.4667

Split Complementary

Split-complementary colors differ from the complementary color scheme. The scheme consists of three colors, the original color and two neighbors of the complement color.



50.0679, 55.5244, 63.5062



55.7368, 55.5244, 61.8125



50.5230, 55.5244, 55.2810

Square

The Square scheme is like the rectangle color scheme, but the four colors are evenly spaced on the color wheel.



55.7368, 55.5244, 61.8125



53.2456, 55.5244, 52.5029



49.9186, 55.5244, 59.1207



52.3057, 55.5244, 69.1756

Rectangle

The Rectangle color scheme consists of four colors that form a rectangle on the color wheel.



55.7368, 55.5244, 61.8125



55.0355, 55.5244, 55.1063



49.9186, 55.5244, 59.1207



50.5758, 55.5244, 66.1425

Sweetspot

The Sweet Spot groups the original color and five complimentary colors.



55.7384, 55.5268, 61.8137



91.9141, 94.9183, 104.1858



55.0586, 55.0234, 68.6923



19.4982, 20.0330, 22.0350



0.0000, 0.0000, 0.0000



20.3446, 21.4041, 23.3091

Same Dimension

The Same Dimension uses a secret algorithm to generate beautiful new colors.



55.7384, 55.5268, 61.8137



85.0391, 83.8322, 93.6814



55.3420, 56.0044, 57.7651



11.9963, 11.8833, 13.2563



17.1791, 8.7445, 5.8491



0.9990, 0.5043, 0.5295

Inverse Universe

The Inverse Universe completely reimagines the original color for something new.



55.7384, 55.5268, 61.8137



85.0391, 83.8322, 93.6814



55.9775, 61.0705, 69.8110



11.9963, 11.8833, 13.2563



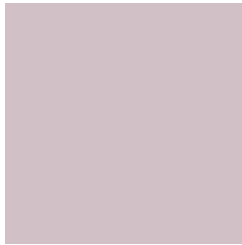
17.1791, 8.7445, 5.8491



0.9990, 0.5043, 0.5295

Previews

White Background



This preview shows how the XYZ color 55.7368, 55.5244, 61.8125 looks on a white background.

Color Contrast Check

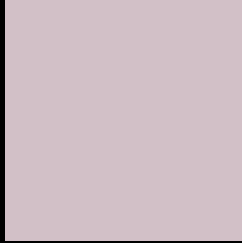
Large Text (above 18pt) WCAG AA × Fail

Any Text WCAG AA × Fail

Large Text (above 18pt) WCAG AAA × Fail

Any Text WCAG AAA × Fail

Black Background



This preview shows how the XYZ color 55.7368, 55.5244, 61.8125 looks on a black background.

Color Contrast Check

Large Text (above 18pt) WCAG AA ✓ Pass

Any Text WCAG AA ✓ Pass

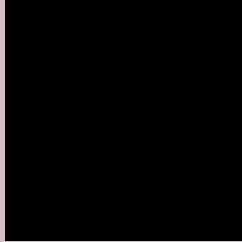
Large Text (above 18pt) WCAG AAA ✓ Pass

Any Text WCAG AAA ✓ Pass

If you want to check with other color combinations, try the [Color Contrast Checker](#).

XYZ 55.7368, 55.5244, 61.8125

Background



This preview shows how black text looks on a background with the XYZ color 55.7368, 55.5244, 61.8125.



This preview shows how white text looks on a background with the XYZ color 55.7368, 55.5244,

61.8125.

Color Blindness Simulation

Color vision deficiency is a very complex topic, and I could not describe the different causes any better than Wikipedia does, so if you want to learn more, you should check out their [article about color blindness](#).

Dichromacy



Original Color

55.7368, 55.5244, 61.8125

Protanopia

53.8357, 55.8390, 63.1989

Deuteranopia

56.4538, 55.2466, 61.7210



Tritanopia

56.6353, 55.5667, 66.1330

Trichromacy



Original Color

55.7368, 55.5244, 61.8125

Protanomaly

54.5690, 55.8969, 62.5567

Deuteranomaly

56.3802, 55.5313, 61.7799

Tritanomaly

56.2743, 55.4223, 64.2315

Monochromacy



Original Color

55.7368, 55.5244, 61.8125

Achromatopsia

53.6758, 56.4712, 61.4971

Achromatomaly

54.2901, 56.1136, 61.3957

CSS Examples

Text

The CSS property to change the color of the text to XYZ 55.7368, 55.5244, 61.8125 is called "color". The color property can be set on classes, ids or directly on the HTML element.

This example shows how text in the color `rgb(210, 192, 199)` looks like.

```
.text, #text, p{  
    color:rgb(210, 192, 199)  
}
```

If you want to add a text shadow in that color use the text-shadow property, you can generate a text shadow directly with our [CSS Text Shadow Generator](#).

Here you see how black text with a 4 pixel rgb(210, 192, 199) colored shadow looks like.

```
.shadow{ text-shadow: 4px 4px 2px rgb(210, 192, 199) }
```

Border

The CSS property to change the border of an element to XYZ 55.7368, 55.5244, 61.8125 is called "border". The border property can be set on classes, ids or directly on the HTML element.

This example shows the color as border, it can be applied via the CSS property "border" or "border-color".

```
.border, #border, table{ border:4px solid rgb(210, 192, 199) }
```


If only the border color should be changed use the property `border-color`.

```
.border{ border-color:rgb(210, 192, 199) }
```

If you want to add a box shadow in that color use:

Here you see how a box with a 4 pixel `rgb(210, 192, 199)` colored shadow looks like.

```
.boxshadow{ -moz-box-shadow:4px 4px 4px  
4px rgb(210, 192, 199); -webkit-box-  
shadow:4px 4px 4px 4px rgb(210, 192, 199);  
box-shadow:4px 4px 4px 4px rgb(210, 192,  
199) }
```

Background

The CSS property to change the background color of an element to XYZ 55.7368, 55.5244, 61.8125 is called "background". The background property can be set on classes, ids or directly on the HTML element.

```
.background, #background, body{  
background: rgb(210, 192, 199) }
```

If only the background color should be changed can be used:

```
.background{ background-color: rgb(210,  
192, 199) }
```

This example shows the color as background, it is applied via the CSS property "background".

To optimize and compress your CSS code, you can use our [online CSS compressor and optimizer](#) based on csstidy. If you want to create a linear or radial gradient as background or border, check our [CSS Gradient Generator](#).

Hey! You found this booklet interesting? Support Converting Colors with the new Membership Option!

The pro membership hides all ads, plus gives you double the colors in the color bucket, and more awesome pro features!

[Learn more, Memberships starting at \\$2.50/m!](#)

**Follow me
on Twitter!**

@ConvertingColor