

Converting Colors

XYZ(55.8175, 53.3671, 48.7460)

Have a look what the booklet for
XYZ(55.8175, 53.3671, 48.7460)
contains.

XYZ(55.8168, 53.3026, 48.9415)	3
<i>Conversions</i>	4
<i>Details</i>	6
<i>Harmonies</i>	12
<i>Previews</i>	24
<i>Color Blindness Simulation</i>	28
<i>CSS Examples</i>	31

Color

**XYZ(55.8168, 53.3026,
48.9415)**

Conversions

Conversions Part 1

Format	Color
Hex	E0B8B1
RGB	224, 184, 177
RGB Percent	88%, 72%, 69%
CMY	0.1216, 0.2784, 0.3059
CMYK	0.00, 0.18, 0.21, 0.12
HSL	9°, 43%, 79%
HSV	9°, 21%, 88%
XYZ	55.8168, 53.3026, 48.9415
YIQ	195.1620, 26.0870, 6.3030

Conversions

Conversions Part 2

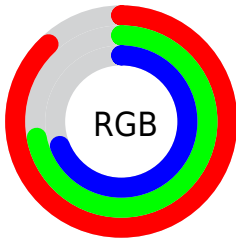
Format	Color
RYB	224, 185, 177
Decimal	14727345
CIELab	78.05, 13.31, 8.96
CIELCh	78, 16.041, 33.946
Yxy	53.3026, 0.3531, 0.3372
Android (android.graphics.Color)	4292917425 (0xFFE0B8B1)
YUV	195.1620, -8.9539, 25.2909
Hunter-Lab	73.0086, 8.7023, 11.3609

Details

The XYZ color **55.8168, 53.3026, 48.9415** is a light color, and the websafe version is hex **FFCCCC**. A complement of this color would be **56.3983, 64.3530, 79.9704**, and the grayscale version is **52.0103, 54.7189, 59.5889**.

A 20% lighter version of the original color is **87.1081, 89.4634, 89.7679**, and **27.9028, 26.0127, 22.6191** is the 20% darker color. If you saturate the color by 10%, you get **50.0686, 45.0905, 36.8995**, and if you desaturate by 10%, it is **62.4680, 62.7333, 63.0938**.

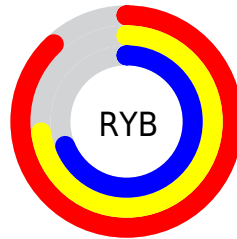
Distribution



Red (88%)

Green (72%)

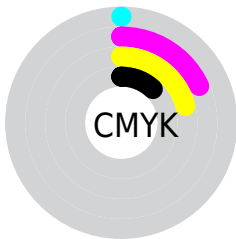
Blue (69%)



Red (88%)

Yellow (73%)

Blue (69%)

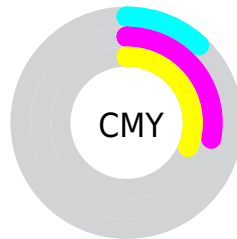


Cyan (0%)

Magenta (18%)

Yellow (21%)

Black (12%)



Cyan (12%)

Magenta (28%)

Yellow (31%)

Brightness & Saturation Gradients

These gradients show how the XYZ color 55.8168, 53.3026, 48.9415 changes by changing the brightness by 10 percent. The first figure shows a shift by +10% for each color and the second figure -10%.

Similar to the brightness gradients but the following saturation gradients show a change of the XYZ color 55.8168, 53.3026, 48.9415 by changing the saturation by 10% instead.

■ 55.8168, 53.3026,
48.9415

■ 55.8168, 53.3026,
48.9415

399.0870,
399.4450, 399.1278

■ 40.2925, 38.0444,
34.2078

■ 97.8780, 95.0495,
89.9847

■ 27.9519, 26.0171,
22.7746

125.1457,
122.3070, 117.1312

■ 18.4297, 16.8365,
14.2235

157.0584,
154.3330, 149.2524

■ 11.3605, 10.1180,
8.1357

193.9817,
191.5119, 186.7669

■ 6.3789, 5.4772,
4.0929

236.2808,
234.2282, 230.0931

■ 3.1197, 2.5299,
1.6764

284.3212,

■ 1.2174, 0.8916,

282.8662, 279.6496

0.3445

338.4681,
337.8103, 335.8550

■ 0.1200, 0.0000,
0.0000

■ 0.0000, 0.0000,
0.0000

■ 55.8168, 53.3026,
48.9415

■ 55.8168, 53.3026,
48.9415

■ 50.0686, 45.0905,
36.8995

■ 62.4680, 62.7333,
63.0938

■ 45.1800, 38.0402,
26.8633

■ 70.0545, 73.4219,
79.4474

■ 41.1105, 32.1011,
18.7245

■ 78.6123, 85.4151,
98.0919

■ 37.8145, 27.2163,
12.3632

■ 84.5507, 94.5874,
108.4086

■ 35.2420, 23.3234,
7.6456

■ 33.3368, 20.3536,
4.4189

■ 32.0340, 18.2291,
2.5014

■ 31.2952, 16.9564,
1.6235

Harmonies

Analogous

The Analogous color harmony consists of three colors that are next to each other on the color wheel.



56.9019, 53.3026, 56.8603



55.8168, 53.3026, 48.9415



53.3500, 53.3026, 43.8991

Triad

The Triadic color harmony groups three colors that are evenly spaced from another and form a triangle on the color wheel.



55.8168, 53.3026, 48.9415



45.4497, 53.3026, 50.7968



51.0775, 53.3026, 76.9708

Complementary

The Complementary color scheme is a pair of colors which are on the opposite of each other on the color wheel.



55.8168, 53.3026, 48.9415



56.3983, 64.3530, 79.9704

Split Complementary

Split-complementary colors differ from the complementary color scheme. The scheme consists of three colors, the original color and two neighbors of the complement color.



48.0668, 53.3026, 74.9258



55.8168, 53.3026, 48.9415



44.8968, 53.3026, 59.2308

Square

The Square scheme is like the rectangle color scheme, but the four colors are evenly spaced on the color wheel.



55.8168, 53.3026, 48.9415



47.3780, 53.3026, 44.8904



45.8357, 53.3026, 68.1959



54.0954, 53.3026, 73.5293

Rectangle

The Rectangle color scheme consists of four colors that form a rectangle on the color wheel.



55.8168, 53.3026, 48.9415



51.2994, 53.3026, 42.5402



45.8357, 53.3026, 68.1959



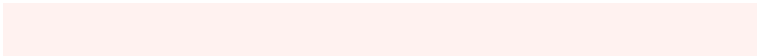
50.0309, 53.3026, 76.9041

Sweetspot

The Sweet Spot groups the original color and five complimentary colors.



55.8182, 53.3050, 48.9426



88.6698, 91.0259, 95.1010



59.0832, 52.3402, 73.1360



18.8364, 19.2824, 20.0483



0.0000, 0.0000, 0.0000



20.3446, 21.4041, 23.3091

Same Dimension

The Same Dimension uses a secret algorithm to generate beautiful new colors.



55.8182, 53.3050, 48.9426



71.5000, 66.6896, 58.5385



60.9332, 63.5349, 50.6476



13.8713, 14.0285, 14.2835



18.2675, 9.9729, 0.9622



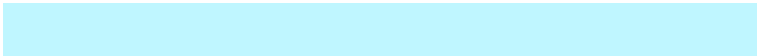
1.3186, 0.7961, 0.0842

Inverse Universe

The Inverse Universe completely reimagines the original color for something new.



56.3983, 64.3530, 79.9704



72.4025, 83.9363, 106.9930



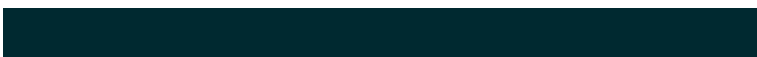
50.9304, 53.4171, 78.1477



13.9334, 15.2060, 17.5884



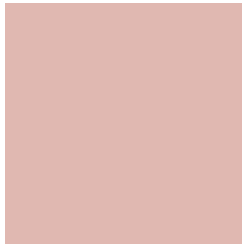
18.6946, 24.8588, 44.8613



1.3437, 1.8189, 3.1255

Previews

White Background



This preview shows how the XYZ color 55.8168, 53.3026, 48.9415 looks on a white background.

Color Contrast Check

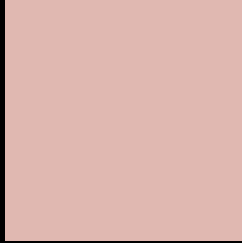
Large Text (above 18pt) WCAG AA × Fail

Any Text WCAG AA × Fail

Large Text (above 18pt) WCAG AAA × Fail

Any Text WCAG AAA × Fail

Black Background



This preview shows how the XYZ color 55.8168, 53.3026, 48.9415 looks on a black background.

Color Contrast Check

Large Text (above 18pt) WCAG AA ✓ Pass

Any Text WCAG AA ✓ Pass

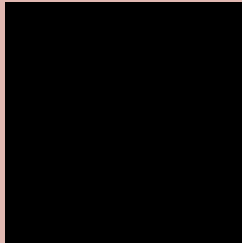
Large Text (above 18pt) WCAG AAA ✓ Pass

Any Text WCAG AAA ✓ Pass

If you want to check with other color combinations, try the [Color Contrast Checker](#).

XYZ 55.8168, 53.3026, 48.9415

Background



This preview shows how black text looks on a background with the XYZ color 55.8168, 53.3026, 48.9415.



This preview shows how white text looks on a background with the XYZ color 55.8168, 53.3026,

48.9415.

Color Blindness Simulation

Color vision deficiency is a very complex topic, and I could not describe the different causes any better than Wikipedia does, so if you want to learn more, you should check out their [article about color blindness](#).

Dichromacy



Original Color

55.8168, 53.3026, 48.9415

Protanopia

50.8463, 53.2188, 51.8483

Deuteranopia

54.4082, 53.1976, 48.9955



Tritanopia

57.7382, 53.1566, 58.8469

Trichromacy



Original Color

55.8168, 53.3026, 48.9415

Protanomaly

52.4482, 53.1004, 50.6651

Deuteranomaly

54.8000, 53.0879, 48.9537

Tritanomaly

56.8564, 53.0943, 54.8285

Monochromacy



Original Color

55.8168, 53.3026, 48.9415

Achromatopsia

51.8711, 54.5724, 59.4294

Achromatomaly

53.1615, 54.0143, 55.2008

CSS Examples

Text

The CSS property to change the color of the text to XYZ 55.8168, 53.3026, 48.9415 is called "color". The color property can be set on classes, ids or directly on the HTML element.

This example shows how text in the color `rgb(224, 184, 177)` looks like.

```
.text, #text, p{  
    color:rgb(224, 184, 177)  
}
```

If you want to add a text shadow in that color use the text-shadow property, you can generate a text shadow directly with our [CSS Text Shadow Generator](#).

Here you see how black text with a 4 pixel rgb(224, 184, 177) colored shadow looks like.

```
.shadow{ text-shadow: 4px 4px 2px rgb(224, 184, 177) }
```

Border

The CSS property to change the border of an element to XYZ 55.8168, 53.3026, 48.9415 is called "border". The border property can be set on classes, ids or directly on the HTML element.

This example shows the color as border, it can be applied via the CSS property "border" or "border-color".

```
.border, #border, table{ border:4px solid rgb(224, 184, 177) }
```


If only the border color should be changed use the property `border-color`.

```
.border{ border-color:rgb(224, 184, 177) }
```

If you want to add a box shadow in that color use:

Here you see how a box with a 4 pixel `rgb(224, 184, 177)` colored shadow looks like.

```
.boxshadow{ -moz-box-shadow:4px 4px 4px 4px rgb(224, 184, 177); -webkit-box-shadow:4px 4px 4px 4px rgb(224, 184, 177); box-shadow:4px 4px 4px 4px rgb(224, 184, 177) }
```

Background

The CSS property to change the background color of an element to XYZ 55.8168, 53.3026, 48.9415 is called "background". The background property can be set on classes, ids or directly on the HTML element.

```
.background, #background, body{  
background: rgb(224, 184, 177) }
```

If only the background color should be changed can be used:

```
.background{ background-color: rgb(224,  
184, 177) }
```

This example shows the color as background, it is applied via the CSS property "background".

To optimize and compress your CSS code, you can use our [online CSS compressor and optimizer](#) based on csstidy. If you want to create a linear or radial gradient as background or border, check our [CSS Gradient Generator](#).

Hey! You found this booklet interesting? Support Converting Colors with the new Membership Option!

The pro membership hides all ads, plus gives you double the colors in the color bucket, and more awesome pro features!

[Learn more, Memberships starting at \\$2.50/m!](#)

**Follow me
on Twitter!**

@ConvertingColor