

Converting Colors

XYZ(55.8195, 53.5308, 52.7379)

Have a look what the booklet for
XYZ(55.8195, 53.5308, 52.7379)
contains.

XYZ(55.8195, 53.5308, 52.7379)	3
<i>Conversions</i>	4
<i>Details</i>	6
<i>Harmonies</i>	12
<i>Previews</i>	24
<i>Color Blindness Simulation</i>	28
<i>CSS Examples</i>	31

Color

**XYZ(55.8195, 53.5308,
52.7379)**

Conversions

Conversions Part 1

Format	Color
Hex	DDB9B8
RGB	221, 185, 184
RGB Percent	87%, 73%, 72%
CMY	0.1333, 0.2745, 0.2784
CMYK	0.00, 0.16, 0.17, 0.13
HSL	2°, 35%, 79%
HSV	2°, 17%, 87%
XYZ	55.8195, 53.5308, 52.7379
YIQ	195.6500, 21.7770, 7.3210

Conversions

Conversions Part 2

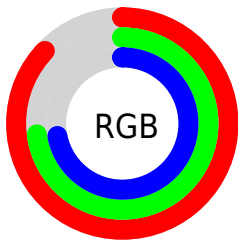
Format	Color
R _Y B	221, 185, 184
Decimal	14531000
CIE Lab	78.19, 12.74, 5.33
CIE LCh	78, 13.804, 22.691
Yxy	53.5308, 0.3444, 0.3303
Android (android.graphics.Color)	4292721080 (0xFFDDB9B8)
YUV	195.6500, -5.7434, 22.2320
Hunter-Lab	73.1647, 8.1445, 8.4785

Details

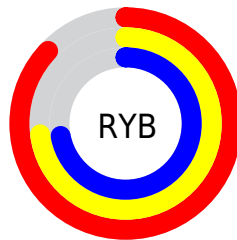
The XYZ color **55.8195, 53.5308, 52.7379** is a light color, and the websafe version is hex **FFCCCC**. A complement of this color would be **58.4110, 66.5956, 78.1827**, and the grayscale version is **52.2851, 55.0080, 59.9038**.

A 20% lighter version of the original color is **88.4235, 90.4619, 95.2385**, and **27.8650, 26.1406, 25.0497** is the 20% darker color. If you saturate the color by 10%, you get **49.5189, 44.3515, 40.0872**, and if you desaturate by 10%, it is **63.1652, 64.2200, 67.5237**.

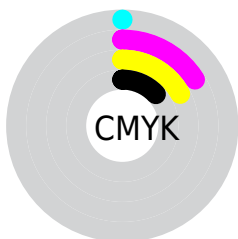
Distribution



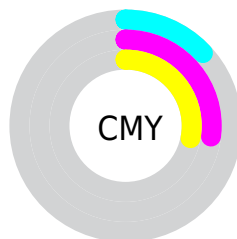
- Red (87%)
- Green (73%)
- Blue (72%)



- Red (87%)
- Yellow (73%)
- Blue (72%)



- Cyan (0%)
- Magenta (16%)
- Yellow (17%)
- Black (13%)





- Cyan (13%)
- Magenta (27%)
- Yellow (28%)

Brightness & Saturation Gradients


These gradients show how the XYZ color 55.8195, 53.5308, 52.7379 changes by changing the brightness by 10 percent. The first figure shows a shift by +10% for each color and the second figure -10%.


Similar to the brightness gradients but the following saturation gradients show a change of the XYZ color 55.8195, 53.5308, 52.7379 by changing the saturation by 10% instead.


 55.8195, 53.5308,
52.7379

 55.8195, 53.5308,
52.7379


399.0970,
400.3183, 414.3165

 40.2947, 38.2267,
37.2073


 97.8820, 95.3850,
95.6562

 27.9536, 26.1587,
25.0710

125.1503,
122.7038, 123.8810

 18.4310, 16.9424,
15.9104

157.0638,
154.7964, 157.1742

 11.3614, 10.1934,
9.3071

193.9879,
192.0470, 195.9545

 6.3795, 5.5274,
4.8425

236.2879,
234.8401, 240.6403

 3.1200, 2.5599,
2.0980

284.3292,

 1.2176, 0.9065,

283.5601, 291.6502

0.6146

338.4771,
338.5913, 349.4028

■ 0.1202, 0.0000,
0.0000

■ 0.0000, 0.0000,
0.0000

■ 55.8195, 53.5308,
52.7379

■ 55.8195, 53.5308,
52.7379

■ 49.5189, 44.3515,
40.0872

■ 63.1652, 64.2200,
67.5237

■ 44.2117, 36.6073,
29.4699

■ 71.5957, 76.4751,
84.5332

■ 39.8486, 30.2278,
20.7809

■ 81.1541, 90.3582,
103.8542

■ 36.3742, 25.1339,
13.9045

■ 83.6290, 94.1123,
108.3655

■ 33.7275, 21.2385,
8.7126

■ 31.8398, 18.4435,
5.0603

■ 30.6310, 16.6355,
2.7785

■ 30.0024, 15.6760,
1.6512

■ 29.8841, 15.5025,
1.4172

Harmonies

Analogous

The Analogous color harmony consists of three colors that are next to each other on the color wheel.



56.2029, 53.5308, 60.1973



55.8195, 53.5308, 52.7379



54.0904, 53.5308, 47.2448

Triad

The Triadic color harmony groups three colors that are evenly spaced from another and form a triangle on the color wheel.



55.8195, 53.5308, 52.7379



46.8620, 53.5308, 49.7331



50.2220, 53.5308, 74.3070

Complementary

The Complementary color scheme is a pair of colors which are on the opposite of each other on the color wheel.



55.8195, 53.5308, 52.7379



58.4110, 66.5956, 78.1827

Split Complementary

Split-complementary colors differ from the complementary color scheme. The scheme consists of three colors, the original color and two neighbors of the complement color.



47.7981, 53.5308, 70.9258



55.8195, 53.5308, 52.7379



45.9032, 53.5308, 56.4155

Square

The Square scheme is like the rectangle color scheme, but the four colors are evenly spaced on the color wheel.



55.8195, 53.5308, 52.7379



48.9034, 53.5308, 45.6200



46.2398, 53.5308, 64.2100



52.9080, 53.5308, 73.1029

Rectangle

The Rectangle color scheme consists of four colors that form a rectangle on the color wheel.



55.8195, 53.5308, 52.7379



52.4392, 53.5308, 45.2157



46.2398, 53.5308, 64.2100



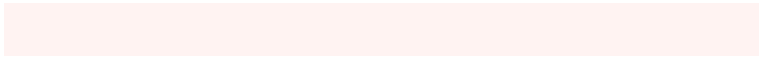
49.3509, 53.5308, 73.6595

Sweetspot

The Sweet Spot groups the original color and five complimentary colors.



55.8210, 53.5332, 52.7390



89.2344, 91.5455, 97.1683



59.9290, 54.8415, 75.4040



18.9315, 19.3497, 20.4587



0.0000, 0.0000, 0.0000



20.3446, 21.4041, 23.3091

Same Dimension

The Same Dimension uses a secret algorithm to generate beautiful new colors.



55.8210, 53.5332, 52.7390



74.0624, 69.4662, 66.6316



59.8546, 61.6005, 54.0836



13.0842, 13.1078, 13.5660



17.3732, 9.0321, 0.8277



1.1357, 0.6056, 0.0570

Inverse Universe

The Inverse Universe completely reimagines the original color for something new.



58.4110, 66.5956, 78.1827



78.2719, 90.6975, 107.9887



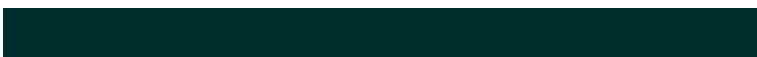
53.9121, 57.5978, 76.6831



13.4130, 14.7657, 16.7953



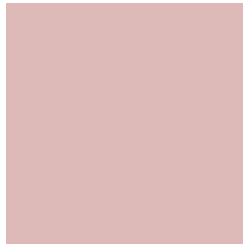
21.7128, 31.2950, 44.6346



1.4164, 2.0470, 2.8949

Previews

White Background



This preview shows how the XYZ color 55.8195, 53.5308, 52.7379 looks on a white background.

Color Contrast Check

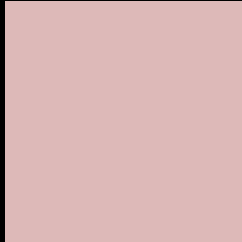
Large Text (above 18pt) WCAG AA × Fail

Any Text WCAG AA × Fail

Large Text (above 18pt) WCAG AAA × Fail

Any Text WCAG AAA × Fail

Black Background



This preview shows how the XYZ color 55.8195, 53.5308, 52.7379 looks on a black background.

Color Contrast Check

Large Text (above 18pt) WCAG AA ✓ Pass

Any Text WCAG AA ✓ Pass

Large Text (above 18pt) WCAG AAA ✓ Pass

Any Text WCAG AAA ✓ Pass

If you want to check with other color combinations, try the [Color Contrast Checker](#).

XYZ 55.8195, 53.5308, 52.7379

Background



This preview shows how black text looks on a background with the XYZ color 55.8195, 53.5308, 52.7379.



This preview shows how white text looks on a background with the XYZ color 55.8195, 53.5308,

Color Blindness Simulation

Color vision deficiency is a very complex topic, and I could not describe the different causes any better than Wikipedia does, so if you want to learn more, you should check out their [article about color blindness](#).

Dichromacy



Original Color

55.8195, 53.5308, 52.7379

Protanopia

51.4358, 53.7765, 55.2459

Deuteranopia

54.7410, 53.6003, 52.8081



Tritanopia

57.4430, 53.5862, 60.1389

Trichromacy



Original Color

55.8195, 53.5308, 52.7379

Protanomaly

52.8367, 53.5366, 54.5625

Deuteranomaly

55.1241, 53.4839, 52.7655

Tritanomaly

56.7791, 53.6163, 57.2256

Monochromacy



Original Color

55.8195, 53.5308, 52.7379

Achromatopsia

52.4687, 55.2011, 60.1140

Achromatomaly

53.5409, 54.4842, 57.5638

CSS Examples

Text

The CSS property to change the color of the text to XYZ 55.8195, 53.5308, 52.7379 is called "color". The color property can be set on classes, ids or directly on the HTML element.

This example shows how text in the color `rgb(221, 185, 184)` looks like.

```
.text, #text, p{  
    color:rgb(221, 185, 184)  
}
```

If you want to add a text shadow in that color use the text-shadow property, you can generate a text shadow directly with our [CSS Text Shadow Generator](#).

Here you see how black text with a 4 pixel rgb(221, 185, 184) colored shadow looks like.

```
.shadow{ text-shadow: 4px 4px 2px rgb(221, 185, 184) }
```

Border

The CSS property to change the border of an element to XYZ 55.8195, 53.5308, 52.7379 is called "border". The border property can be set on classes, ids or directly on the HTML element.

This example shows the color as border, it can be applied via the CSS property "border" or "border-color".

```
.border, #border, table{ border:4px solid rgb(221, 185, 184) }
```


If only the border color should be changed use the property border-color.

```
.border{ border-color:rgb(221, 185, 184) }
```

If you want to add a box shadow in that color use:

Here you see how a box with a 4 pixel rgb(221, 185, 184) colored shadow looks like.

```
.boxshadow{ -moz-box-shadow:4px 4px 4px  
4px rgb(221, 185, 184); -webkit-box-  
shadow:4px 4px 4px 4px rgb(221, 185, 184);  
box-shadow:4px 4px 4px 4px rgb(221, 185,  
184) }
```

Background

The CSS property to change the background color of an element to XYZ 55.8195, 53.5308, 52.7379 is called "background". The background property can be set on classes, ids or directly on the HTML element.

```
.background, #background, body{  
background: rgb(221, 185, 184) }
```

If only the background color should be changed can be used:

```
.background{ background-color: rgb(221,  
185, 184) }
```

This example shows the color as background, it is applied via the CSS property "background".

To optimize and compress your CSS code, you can use our [online CSS compressor and optimizer](#) based on csstidy. If you want to create a linear or radial gradient as background or border, check our [CSS Gradient Generator](#).

Hey! You found this booklet interesting? Support Converting Colors with the new Membership Option!

The pro membership hides all ads, plus gives you double the colors in the color bucket, and more awesome pro features!

[Learn more, Memberships starting at \\$2.50/m!](#)

**Follow me
on Twitter!**

@ConvertingColor