

Converting Colors

XYZ(55.8494, 51.0329, 54.7090)

Have a look what the booklet for
XYZ(55.8494, 51.0329, 54.7090)
contains.

XYZ(55.8506, 51.0827, 54.4932)	3
<i>Conversions</i>	4
<i>Details</i>	6
<i>Harmonies</i>	12
<i>Previews</i>	24
<i>Color Blindness Simulation</i>	28
<i>CSS Examples</i>	31

Color

**XYZ(55.8506, 51.0827,
54.4932)**

Conversions

Conversions Part 1

Format	Color
Hex	E1B1BC
RGB	225, 177, 188
RGB Percent	88%, 69%, 74%
CMY	0.1176, 0.3059, 0.2627
CMYK	0.00, 0.21, 0.16, 0.12
HSL	346°, 44%, 79%
HSV	346°, 21%, 88%
XYZ	55.8506, 51.0827, 54.4932
YIQ	192.6060, 25.0770, 13.5970

Conversions

Conversions Part 2

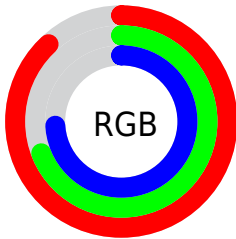
Format	Color
R _Y B	225, 177, 188
Decimal	14791100
CIE Lab	76.73, 19.10, 1.09
CIE LCh	77, 19.130, 3.259
Yxy	51.0827, 0.3460, 0.3164
Android (android.graphics.Color)	4292981180 (0xFFE1B1BC)
YUV	192.6060, -2.2708, 28.4095
Hunter-Lab	71.4722, 14.4092, 4.8255

Details

The XYZ color **55.8506, 51.0827, 54.4932** is a light color, and the websafe version is hex **CC9999**. A complement of this color would be **57.1964, 68.0539, 73.7429**, and the grayscale version is **50.4612, 53.0891, 57.8140**.

A 20% lighter version of the original color is **86.7080, 86.0695, 97.6310**, and **27.9430, 24.5996, 26.1971** is the 20% darker color. If you saturate the color by 10%, you get **50.0087, 42.2132, 43.8685**, and if you desaturate by 10%, it is **62.6529, 61.5121, 66.5480**.

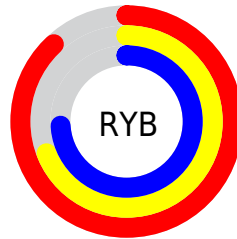
Distribution



Red (88%)

Green (69%)

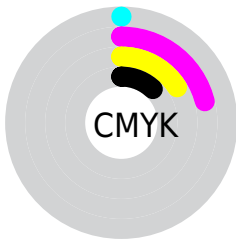
Blue (74%)



Red (88%)

Yellow (69%)

Blue (74%)

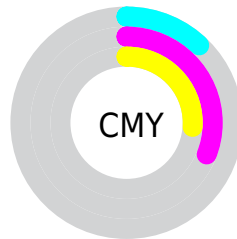


Cyan (0%)

Magenta (21%)

Yellow (16%)

Black (12%)



Cyan (12%)

Magenta (31%)

Yellow (26%)

Brightness & Saturation Gradients

These gradients show how the XYZ color 55.8506, 51.0827, 54.4932 changes by changing the brightness by 10 percent. The first figure shows a shift by +10% for each color and the second figure -10%.

Similar to the brightness gradients but the following saturation gradients show a change of the XYZ color 55.8506, 51.0827, 54.4932 by changing the saturation by 10% instead.

■ 55.8506, 51.0827,
54.4932

■ 55.8506, 51.0827,
54.4932

399.2124,
390.8850, 421.2156

■ 40.3197, 36.2744,
38.6003

■ 97.9272, 91.7770,
98.2617

■ 27.9732, 24.6462,
26.1435

125.2036,
118.4318, 126.9743

■ 18.4458, 15.8137,
16.7043

157.1258,
149.8043, 160.7973

■ 11.3722, 9.3924,
9.8641

194.0593,
186.2788, 200.1491

■ 6.3869, 4.9980,
5.2045

236.3693,
228.2397, 245.4483

■ 3.1246, 2.2461,
2.3069

284.4213,

■ 1.2200, 0.7450,

276.0715, 297.1134

0.7351

338.5805,
330.1584, 355.5630

■ 0.1221, 0.0000,
0.0000

■ 0.0000, 0.0000,
0.0000

■ 55.8506, 51.0827,
54.4932

■ 55.8506, 51.0827,
54.4932

■ 50.0087, 42.2132,
43.8685

■ 62.6529, 61.5121,
66.5480

■ 45.0790, 34.8218,
34.6170

■ 70.4521, 73.5643,
80.0805

■ 41.0157, 28.8297,
26.6825

■ 79.2884, 87.3073,
95.1401

■ 37.7672, 24.1477,
20.0037

■ 84.8616, 94.7477,
108.4232

■ 35.2760, 20.6767,
14.5143

■ 33.4772, 18.3029,
10.1413

■ 32.2938, 16.8910,
6.8032

■ 31.6613, 16.2516,
4.6637

Harmonies

Analogous

The Analogous color harmony consists of three colors that are next to each other on the color wheel.



55.0483, 51.0827, 65.0966



55.8506, 51.0827, 54.4932



54.6185, 51.0827, 45.3737

Triad

The Triadic color harmony groups three colors that are evenly spaced from another and form a triangle on the color wheel.



55.8506, 51.0827, 54.4932



44.8288, 51.0827, 40.5398



45.4828, 51.0827, 75.4237

Complementary

The Complementary color scheme is a pair of colors which are on the opposite of each other on the color wheel.



55.8506, 51.0827, 54.4932



57.1964, 68.0539, 73.7429

Split Complementary

Split-complementary colors differ from the complementary color scheme. The scheme consists of three colors, the original color and two neighbors of the complement color.



42.9532, 51.0827, 67.3041



55.8506, 51.0827, 54.4932



42.5891, 51.0827, 47.1116

Square

The Square scheme is like the rectangle color scheme, but the four colors are evenly spaced on the color wheel.



55.8506, 51.0827, 54.4932



48.1574, 51.0827, 37.9735



41.9197, 51.0827, 56.7630



48.9499, 51.0827, 78.0298

Rectangle

The Rectangle color scheme consists of four colors that form a rectangle on the color wheel.



55.8506, 51.0827, 54.4932



52.8435, 51.0827, 41.1061



41.9197, 51.0827, 56.7630



44.5005, 51.0827, 73.2028

Sweetspot

The Sweet Spot groups the original color and five complimentary colors.



55.8520, 51.0850, 54.4943



88.5205, 89.8872, 97.6410



56.9877, 51.1491, 78.1039



18.8013, 19.0144, 20.6463



0.0000, 0.0000, 0.0000



20.3446, 21.4041, 23.3091

Same Dimension

The Same Dimension uses a secret algorithm to generate beautiful new colors.



55.8520, 51.0850, 54.4943



70.2589, 61.8806, 65.2982



57.3590, 55.9244, 49.3692



13.8352, 13.7517, 14.9025



18.2815, 9.3796, 2.8821



1.3012, 0.6638, 0.3792

Inverse Universe

The Inverse Universe completely reimagines the original color for something new.



55.8520, 51.0850, 54.4943



70.2589, 61.8806, 65.2982



55.3175, 61.9721, 80.2810



13.8352, 13.7517, 14.9025



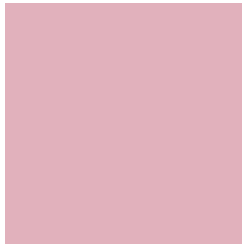
18.2815, 9.3796, 2.8821



1.3012, 0.6638, 0.3792

Previews

White Background



This preview shows how the XYZ color 55.8506, 51.0827, 54.4932 looks on a white background.

Color Contrast Check

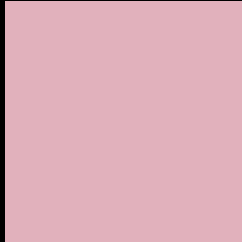
Large Text (above 18pt) WCAG AA × Fail

Any Text WCAG AA × Fail

Large Text (above 18pt) WCAG AAA × Fail

Any Text WCAG AAA × Fail

Black Background



This preview shows how the XYZ color 55.8506, 51.0827, 54.4932 looks on a black background.

Color Contrast Check

Large Text (above 18pt) WCAG AA ✓ Pass

Any Text WCAG AA ✓ Pass

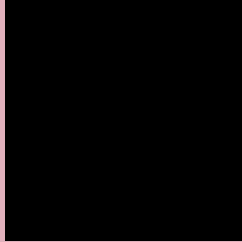
Large Text (above 18pt) WCAG AAA ✓ Pass

Any Text WCAG AAA ✓ Pass

If you want to check with other color combinations, try the [Color Contrast Checker](#).

XYZ 55.8506, 51.0827, 54.4932

Background



This preview shows how black text looks on a background with the XYZ color 55.8506, 51.0827, 54.4932.



This preview shows how white text looks on a background with the XYZ color 55.8506, 51.0827,

Color Blindness Simulation

Color vision deficiency is a very complex topic, and I could not describe the different causes any better than Wikipedia does, so if you want to learn more, you should check out their [article about color blindness](#).

Dichromacy



Original Color

55.8506, 51.0827, 54.4932

Protanopia

49.5338, 51.4117, 58.9425

Deuteranopia

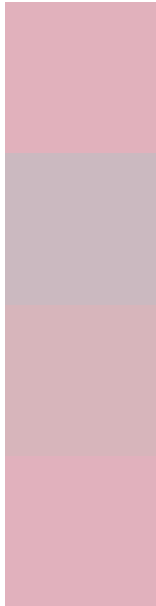
52.1976, 51.0101, 54.1085



Tritanopia

56.0677, 51.1695, 55.6368

Trichromacy



Original Color

55.8506, 51.0827, 54.4932

Protanomaly

51.4920, 51.2002, 57.0379

Deuteranomaly

53.5178, 51.0827, 54.0530

Tritanomaly

55.9588, 51.1260, 55.0631

Monochromacy



Original Color

55.8506, 51.0827, 54.4932

Achromatopsia

50.6879, 53.3276, 58.0738

Achromatomaly

52.3511, 52.2814, 56.6223

CSS Examples

Text

The CSS property to change the color of the text to XYZ 55.8506, 51.0827, 54.4932 is called "color". The color property can be set on classes, ids or directly on the HTML element.

This example shows how text in the color `rgb(225, 177, 188)` looks like.

```
.text, #text, p{  
    color:rgb(225, 177, 188)  
}
```

If you want to add a text shadow in that color use the text-shadow property, you can generate a text shadow directly with our [CSS Text Shadow Generator](#).

Here you see how black text with a 4 pixel rgb(225, 177, 188) colored shadow looks like.

```
.shadow{ text-shadow: 4px 4px 2px rgb(225, 177, 188) }
```

Border

The CSS property to change the border of an element to XYZ 55.8506, 51.0827, 54.4932 is called "border". The border property can be set on classes, ids or directly on the HTML element.

This example shows the color as border, it can be applied via the CSS property "border" or "border-color".

```
.border, #border, table{ border:4px solid rgb(225, 177, 188) }
```


If only the border color should be changed use the property `border-color`.

```
.border{ border-color:rgb(225, 177, 188) }
```

If you want to add a box shadow in that color use:

Here you see how a box with a 4 pixel `rgb(225, 177, 188)` colored shadow looks like.

```
.boxshadow{ -moz-box-shadow:4px 4px 4px  
4px rgb(225, 177, 188); -webkit-box-  
shadow:4px 4px 4px 4px rgb(225, 177, 188);  
box-shadow:4px 4px 4px 4px rgb(225, 177,  
188) }
```

Background

The CSS property to change the background color of an element to XYZ 55.8506, 51.0827, 54.4932 is called "background". The background property can be set on classes, ids or directly on the HTML element.

```
.background, #background, body{  
background: rgb(225, 177, 188) }
```

If only the background color should be changed can be used:

```
.background{ background-color: rgb(225,  
177, 188) }
```

This example shows the color as background, it is applied via the CSS property "background".

To optimize and compress your CSS code, you can use our [online CSS compressor and optimizer](#) based on csstidy. If you want to create a linear or radial gradient as background or border, check our [CSS Gradient Generator](#).

Hey! You found this booklet interesting? Support Converting Colors with the new Membership Option!

The pro membership hides all ads, plus gives you double the colors in the color bucket, and more awesome pro features!

[Learn more, Memberships starting at \\$2.50/m!](#)

**Follow me
on Twitter!**

@ConvertingColor