

Converting Colors

XYZ(55.8576, 55.8100, 48.9027)

Have a look what the booklet for
XYZ(55.8576, 55.8100, 48.9027)
contains.

| | |
|--|----|
| XYZ(55.8995, 55.8939, 48.9167) | 3 |
| <i>Conversions</i> | 4 |
| <i>Details</i> | 6 |
| <i>Harmonies</i> | 12 |
| <i>Previews</i> | 24 |
| <i>Color Blindness Simulation</i> | 28 |
| <i>CSS Examples</i> | 31 |

Color

**XYZ(55.8995, 55.8939,
48.9167)**

Conversions

Conversions Part 1

| Format | Color |
|-------------|---------------------------|
| Hex | DBC0B0 |
| RGB | 219, 192, 176 |
| RGB Percent | 86%, 75%, 69% |
| CMY | 0.1412, 0.2470, 0.3098 |
| CMYK | 0.00, 0.12, 0.20, 0.14 |
| HSL | 22°, 37%, 77% |
| HSV | 22°, 20%, 86% |
| XYZ | 55.8995, 55.8939, 48.9167 |
| YIQ | 198.2490, 21.2280, 0.7480 |

Conversions

Conversions Part 2

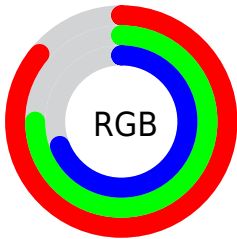
| Format | Color |
|-------------------------------------|--------------------------------|
| R _Y B | 219, 201, 176 |
| Decimal | 14401712 |
| CIE Lab | 79.55, 7.05, 11.57 |
| CIE LCh | 80, 13.547, 58.653 |
| Yxy | 55.8939, 0.3478, 0.3478 |
| Android (android.graphics.Color) | 4292591792 (0xFFDBC0B0) |
| YUV | 198.2490, -10.9688, 18.1986 |
| Hunter-Lab | 74.7622, 2.6300, 13.5403 |

Details

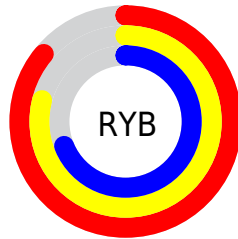
The XYZ color **55.8995, 55.8939, 48.9167** is a light color, and the websafe version is hex **FFCCCC**. A complement of this color would be **52.0462, 57.0551, 75.2878**, and the grayscale version is **53.8848, 56.6910, 61.7365**.

A 20% lighter version of the original color is **89.3729, 94.2210, 89.8199**, and **28.1176, 27.7878, 22.6205** is the 20% darker color. If you saturate the color by 10%, you get **51.0262, 49.3395, 37.4503**, and if you desaturate by 10%, it is **61.4075, 63.1573, 62.3206**.

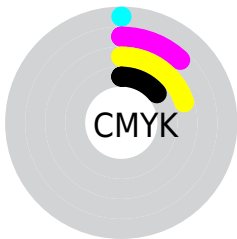
Distribution



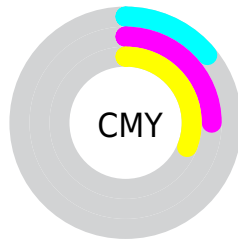
- Red (86%)
- Green (75%)
- Blue (69%)



- Red (86%)
- Yellow (79%)
- Blue (69%)



- Cyan (0%)
- Magenta (12%)
- Yellow (20%)
- Black (14%)





- Cyan (14%)
- Magenta (25%)
- Yellow (31%)

Brightness & Saturation Gradients


These gradients show how the XYZ color 55.8995, 55.8939, 48.9167 changes by changing the brightness by 10 percent. The first figure shows a shift by +10% for each color and the second figure -10%.


Similar to the brightness gradients but the following saturation gradients show a change of the XYZ color 55.8995, 55.8939, 48.9167 by changing the saturation by 10% instead.


 55.8995, 55.8939,
48.9167

 55.8995, 55.8939,
48.9167


399.3938,
409.2915, 399.0273

 40.3590, 40.1179,
34.1883


 97.9983, 98.8494,
89.9474

 28.0040, 27.6305,
22.7597


125.2873,
126.7977, 117.0868

 18.4692, 18.0473,
14.2126


157.2232,
159.5722, 149.2003

 11.3891, 10.9839,
8.1282

194.1714,
197.5573, 186.7063

 6.3984, 6.0560,
4.0882

236.4972,
241.1374, 230.0235

 3.1318, 2.8792,
1.6738

284.5660,

 1.2238, 1.0690,

290.6968, 279.5704

0.3427

338.7431,
346.6201, 335.7655

■ 0.1250, 0.0000,
0.0000

■ 0.0000, 0.0000,
0.0000

■ 55.8995, 55.8939,
48.9167

■ 55.8995, 55.8939,
48.9167

■ 51.0262, 49.3395,
37.4503

■ 61.4075, 63.1573,
62.3206

■ 46.7586, 43.4645,
27.8272

■ 67.5686, 71.1431,
77.7432

■ 43.0722, 38.2480,
19.9505

■ 74.4063, 79.8739,
95.2653

■ 39.9387, 33.6653,
13.7130

■ 80.5248, 88.8026,
107.5043

■ 37.3271, 29.6900,
8.9955

■ 83.0236, 93.8001,
108.3372

■ 35.2029, 26.2932,
5.6623

■ 33.5264, 23.4432,
3.5529

■ 32.2362, 21.0984,
2.3964

■ 32.1940, 21.0211,
2.3607

Harmonies

Analogous

The Analogous color harmony consists of three colors that are next to each other on the color wheel.



57.8597, 55.8939, 53.9403



55.8995, 55.8939, 48.9167



53.2488, 55.8939, 47.0501

Triad

The Triadic color harmony groups three colors that are evenly spaced from another and form a triangle on the color wheel.



55.8995, 55.8939, 48.9167



48.0552, 55.8939, 60.5066



55.6789, 55.8939, 75.0071

Complementary

The Complementary color scheme is a pair of colors which are on the opposite of each other on the color wheel.



55.8995, 55.8939, 48.9167



52.0462, 57.0551, 75.2878

Split Complementary

Split-complementary colors differ from the complementary color scheme. The scheme consists of three colors, the original color and two neighbors of the complement color.



53.0023, 55.8939, 77.1355



55.8995, 55.8939, 48.9167



48.6568, 55.8939, 68.3452

Square

The Square scheme is like the rectangle color scheme, but the four colors are evenly spaced on the color wheel.



55.8995, 55.8939, 48.9167



48.7731, 55.8939, 53.3781



50.4448, 55.8939, 74.6020



57.7293, 55.8939, 69.0080

Rectangle

The Rectangle color scheme consists of four colors that form a rectangle on the color wheel.



55.8995, 55.8939, 48.9167



51.4665, 55.8939, 47.7139



50.4448, 55.8939, 74.6020



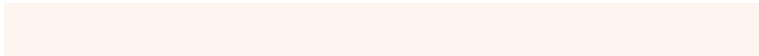
54.8198, 55.8939, 76.2205

Sweetspot

The Sweet Spot groups the original color and five complimentary colors.



55.9010, 55.8964, 48.9179



89.6955, 93.0772, 95.4429



55.5466, 50.4344, 63.4535



19.0782, 19.7660, 20.1289



0.0000, 0.0000, 0.0000



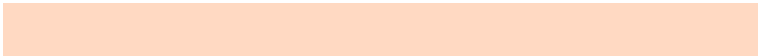
20.3446, 21.4041, 23.3091

Same Dimension

The Same Dimension uses a secret algorithm to generate beautiful new colors.



55.9010, 55.8964, 48.9179



75.6594, 74.5545, 61.3240



60.9117, 65.9179, 50.5881



13.4510, 13.8415, 13.6883



19.1860, 12.6577, 1.4320



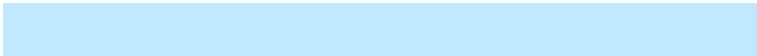
1.3240, 0.9820, 0.1198

Inverse Universe

The Inverse Universe completely reimagines the original color for something new.



52.0462, 57.0551, 75.2878



69.1660, 76.5011, 105.7285



47.3648, 47.6921, 73.7273



13.0164, 13.9726, 16.6631



13.0355, 13.9405, 41.7421



0.9261, 1.0662, 2.7314

Previews

White Background



This preview shows how the XYZ color 55.8995, 55.8939, 48.9167 looks on a white background.

Color Contrast Check

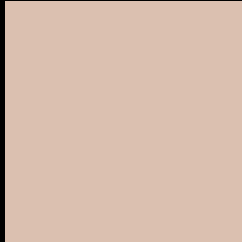
Large Text (above 18pt) WCAG AA × Fail

Any Text WCAG AA × Fail

Large Text (above 18pt) WCAG AAA × Fail

Any Text WCAG AAA × Fail

Black Background



This preview shows how the XYZ color 55.8995, 55.8939, 48.9167 looks on a black background.

Color Contrast Check

Large Text (above 18pt) WCAG AA ✓ Pass

Any Text WCAG AA ✓ Pass

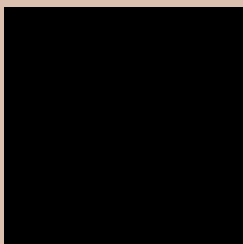
Large Text (above 18pt) WCAG AAA ✓ Pass

Any Text WCAG AAA ✓ Pass

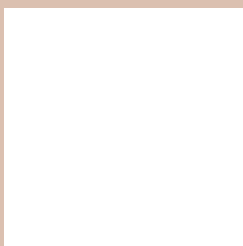
If you want to check with other color combinations, try the [Color Contrast Checker](#).

XYZ 55.8995, 55.8939, 48.9167

Background



This preview shows how black text looks on a background with the XYZ color 55.8995, 55.8939, 48.9167.



This preview shows how white text looks on a background with the XYZ color 55.8995, 55.8939,

Color Blindness Simulation

Color vision deficiency is a very complex topic, and I could not describe the different causes any better than Wikipedia does, so if you want to learn more, you should check out their [article about color blindness](#).

Dichromacy



Original Color

55.8995, 55.8939, 48.9167

Protanopia

53.1790, 56.1260, 50.1500

Deuteranopia

56.9904, 55.8088, 48.8428



Tritanopia

58.8869, 55.8078, 64.1682

Trichromacy



Original Color

55.8995, 55.8939, 48.9167

Protanomaly

54.0293, 55.9062, 49.5383

Deuteranomaly

56.5915, 55.9258, 48.8864

Tritanomaly

57.6420, 55.6176, 58.1493

Monochromacy



Original Color

55.8995, 55.8939, 48.9167

Achromatopsia

53.6758, 56.4712, 61.4971

Achromatomaly

54.4878, 56.3194, 56.7141

CSS Examples

Text

The CSS property to change the color of the text to XYZ 55.8995, 55.8939, 48.9167 is called "color". The color property can be set on classes, ids or directly on the HTML element.

This example shows how text in the color `rgb(219, 192, 176)` looks like.

```
.text, #text, p{  
    color:rgb(219, 192, 176)  
}
```

If you want to add a text shadow in that color use the text-shadow property, you can generate a text shadow directly with our [CSS Text Shadow Generator](#).

Here you see how black text with a 4 pixel rgb(219, 192, 176) colored shadow looks like.

```
.shadow{ text-shadow: 4px 4px 2px rgb(219, 192, 176) }
```

Border

The CSS property to change the border of an element to XYZ 55.8995, 55.8939, 48.9167 is called "border". The border property can be set on classes, ids or directly on the HTML element.

This example shows the color as border, it can be applied via the CSS property "border" or "border-color".

```
.border, #border, table{ border:4px solid rgb(219, 192, 176) }
```


If only the border color should be changed use the property `border-color`.

```
.border{ border-color:rgb(219, 192, 176) }
```

If you want to add a box shadow in that color use:

Here you see how a box with a 4 pixel `rgb(219, 192, 176)` colored shadow looks like.

```
.boxshadow{ -moz-box-shadow:4px 4px 4px  
4px rgb(219, 192, 176); -webkit-box-  
shadow:4px 4px 4px 4px rgb(219, 192, 176);  
box-shadow:4px 4px 4px 4px rgb(219, 192,  
176) }
```

Background

The CSS property to change the background color of an element to XYZ 55.8995, 55.8939, 48.9167 is called "background". The background property can be set on classes, ids or directly on the HTML element.

```
.background, #background, body{  
background: rgb(219, 192, 176) }
```

If only the background color should be changed can be used:

```
.background{ background-color: rgb(219,  
192, 176) }
```

This example shows the color as background, it is applied via the CSS property "background".

To optimize and compress your CSS code, you can use our [online CSS compressor and optimizer](#) based on csstidy. If you want to create a linear or radial gradient as background or border, check our [CSS Gradient Generator](#).

Hey! You found this booklet interesting? Support Converting Colors with the new Membership Option!

The pro membership hides all ads, plus gives you double the colors in the color bucket, and more awesome pro features!

[Learn more, Memberships starting at \\$2.50/m!](#)

**Follow me
on Twitter!**

@ConvertingColor