

# Converting Colors

XYZ(55.9159, 55.9844, 43.4735)

Have a look what the booklet for  
XYZ(55.9159, 55.9844, 43.4735)  
contains.

<b>XYZ(56.0726, 56.1039, 43.4711)</b> .....	3
<b><i>Conversions</i></b> .....	4
<b><i>Details</i></b> .....	6
<b><i>Harmonies</i></b> .....	12
<b><i>Previews</i></b> .....	24
<b><i>Color Blindness Simulation</i></b> .....	28
<b><i>CSS Examples</i></b> .....	31

# Color

**XYZ(56.0726, 56.1039,  
43.4711)**

# Conversions

## Conversions Part 1

<b>Format</b>	<b>Color</b>
Hex	DFC0A5
RGB	223, 192, 165
RGB Percent	87%, 75%, 65%
CMY	0.1255, 0.2470, 0.3529
CMYK	0.00, 0.14, 0.26, 0.13
HSL	28°, 48%, 76%
HSV	28°, 26%, 87%
XYZ	56.0726, 56.1039, 43.4711
YIQ	198.1910, 27.1430, -1.8250

# Conversions

## Conversions Part 2

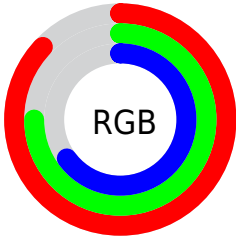
Format	Color
RYB	223, 216, 165
Decimal	14663845
CIELab	79.67, 6.96, 17.68
CIELCh	80, 19.007, 68.505
Yxy	56.1039, 0.3603, 0.3605
Android (android.graphics.Color)	4292853925 (0xFFDFC0A5)
YUV	198.1910, -16.3632, 21.7575
Hunter-Lab	74.9025, 2.5470, 18.0217

# Details

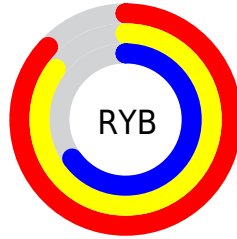
The XYZ color **56.0726, 56.1039, 43.4711** is a light color, and the websafe version is hex **FFCC99**. A complement of this color would be **48.5758, 52.8054, 77.4445**, and the grayscale version is **53.8787, 56.6846, 61.7296**.

A 20% lighter version of the original color is **87.7257, 93.5621, 81.1458**, and **28.1496, 27.8730, 19.5192** is the 20% darker color. If you saturate the color by 10%, you get **51.7060, 50.3404, 32.8597**, and if you desaturate by 10%, it is **61.0080, 62.4379, 56.0194**.

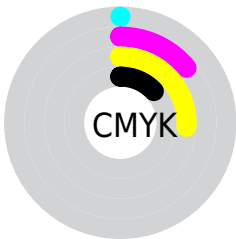
# Distribution



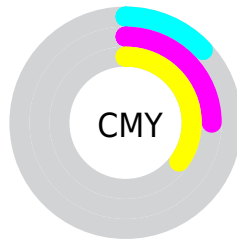
- Red (87%)
- Green (75%)
- Blue (65%)



- Red (87%)
- Yellow (85%)
- Blue (65%)



- Cyan (0%)
- Magenta (14%)
- Yellow (26%)
- Black (13%)




- Cyan (13%)
- Magenta (25%)
- Yellow (35%)


# Brightness & Saturation Gradients

These gradients show how the XYZ color 56.0726, 56.1039, 43.4711 changes by changing the brightness by 10 percent. The first figure shows a shift by +10% for each color and the second figure -10%.


Similar to the brightness gradients but the following saturation gradients show a change of the XYZ color 56.0726, 56.1039, 43.4711 by changing the saturation by 10% instead.





 56.0726, 56.1039,  
43.4711


 56.0726, 56.1039,  
43.4711


400.0356,  
410.0829, 376.5236

 40.4984, 40.2862,  
29.9208

 98.2499, 99.1565,  
81.7153

 28.1133, 27.7618,  
19.5269


 125.5837,  
127.1602, 107.2462

 18.5519, 18.1462,  
11.8710


157.5680,  
159.9947, 137.6077

 11.4491, 11.0550,  
6.5344

194.5683,  
198.0444, 173.2184

 6.4392, 6.1038,  
3.0987

236.9498,  
241.6936, 214.4968

 3.1571, 2.9083,  
1.1452

285.0780,

 1.2374, 1.0841,

291.3269, 261.8614

0.0000

339.3181,  
347.3285, 315.7308

■ 0.1356, 0.0000,  
0.0000

■ 0.0000, 0.0000,  
0.0000

■ 56.0726, 56.1039,  
43.4711

■ 56.0726, 56.1039,  
43.4711

■ 51.7060, 50.3404,  
32.8597

■ 61.0080, 62.4379,  
56.0194

■ 47.8804, 45.1224,  
24.0833

■ 66.5297, 69.3511,  
70.5925

■ 44.5721, 40.4341,  
17.0358

■ 72.6597, 76.8619,  
87.2770

■ 41.7535, 36.2558,  
11.5988

■ 79.4175, 84.9853,  
106.1534

■ 39.3940, 32.5663,  
7.6386

■ 83.1638, 92.2725,  
108.0349

■ 37.4586, 29.3422,  
4.9996

■ 84.2415, 94.4280,  
108.3942

■ 35.9048, 26.5566,  
3.4892

■ 35.3646, 25.5542,  
3.0685

# Harmonies

## Analogous

The Analogous color harmony consists of three colors that are next to each other on the color wheel.



59.3056, 56.1039, 48.8614



56.0726, 56.1039, 43.4711



52.2420, 56.1039, 42.4931

# Triad

The Triadic color harmony groups three colors that are evenly spaced from another and form a triangle on the color wheel.



56.0726, 56.1039, 43.4711



46.3603, 56.1039, 64.2643



58.0485, 56.1039, 79.1469

# Complementary

The Complementary color scheme is a pair of colors which are on the opposite of each other on the color wheel.



56.0726, 56.1039, 43.4711



48.5758, 52.8054, 77.4445

# Split Complementary

Split-complementary colors differ from the complementary color scheme. The scheme consists of three colors, the original color and two neighbors of the complement color.



54.4230, 56.1039, 84.4419



56.0726, 56.1039, 43.4711



47.7608, 56.1039, 75.2000

# Square

The Square scheme is like the rectangle color scheme, but the four colors are evenly spaced on the color wheel.



56.0726, 56.1039, 43.4711



46.7547, 56.1039, 53.6724



50.6688, 56.1039, 82.9170



60.4839, 56.1039, 69.1562



# Rectangle

The Rectangle color scheme consists of four colors that form a rectangle on the color wheel.



56.0726, 56.1039, 43.4711



49.8831, 56.1039, 44.3467



50.6688, 56.1039, 82.9170



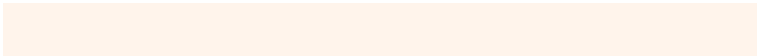
56.9218, 56.1039, 81.5864

# Sweetspot

The Sweet Spot groups the original color and five complimentary colors.



56.0741, 56.1065, 43.4723



88.5579, 91.9955, 91.3840



53.9536, 46.6255, 58.9197



18.7065, 19.3812, 18.8993



0.0000, 0.0000, 0.0000



20.3446, 21.4041, 23.3091



# Same Dimension

The Same Dimension uses a secret algorithm to generate beautiful new colors.



56.0741, 56.1065, 43.4723



72.8043, 71.8582, 51.0812



62.8427, 69.6438, 45.7285



14.2306, 14.7472, 14.4032



20.9046, 15.2471, 1.8412



1.5380, 1.2348, 0.1573

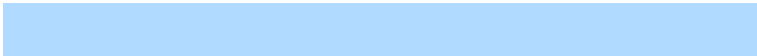


# Inverse Universe

The Inverse Universe completely reimagines the original color for something new.



48.5758, 52.8054, 77.4445



61.0650, 66.6880, 104.2613



42.8212, 41.2961, 75.5263



13.5556, 14.4502, 17.4624



11.8367, 11.1430, 42.5753

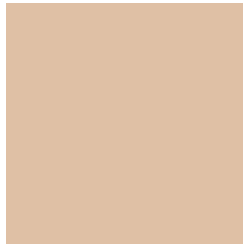


0.9098, 0.9511, 2.9809



# Previews

## White Background



This preview shows how the XYZ color 56.0726, 56.1039, 43.4711 looks on a white background.

## Color Contrast Check

Large Text (above 18pt) WCAG AA × Fail

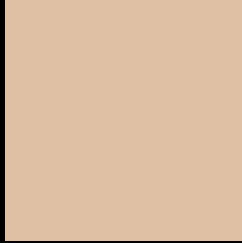
Any Text WCAG AA × Fail

Large Text (above 18pt) WCAG AAA × Fail

Any Text WCAG AAA × Fail



# Black Background



This preview shows how the XYZ color 56.0726, 56.1039, 43.4711 looks on a black background.

## Color Contrast Check

Large Text (above 18pt) WCAG AA ✓ Pass

Any Text WCAG AA ✓ Pass

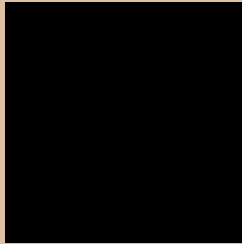
Large Text (above 18pt) WCAG AAA ✓ Pass

Any Text WCAG AAA ✓ Pass

If you want to check with other color combinations, try the [Color Contrast Checker](#).

**XYZ 56.0726, 56.1039, 43.4711**

## **Background**



This preview shows how black text looks on a background with the XYZ color 56.0726, 56.1039, 43.4711.



This preview shows how white text looks on a background with the XYZ color 56.0726, 56.1039,

43.4711.

# Color Blindness Simulation

Color vision deficiency is a very complex topic, and I could not describe the different causes any better than Wikipedia does, so if you want to learn more, you should check out their [article about color blindness](#).

## Dichromacy



### Original Color

56.0726, 56.1039, 43.4711

### Protanopia

53.0466, 56.1696, 45.0917

### Deuteranopia

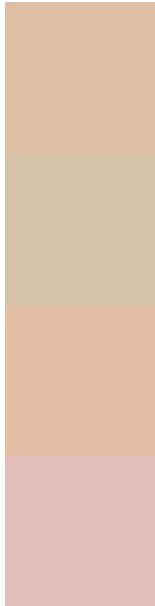
57.1999, 56.0375, 43.3989



## Tritanopia

59.9915, 56.0886, 62.9226

# Trichromacy



## Original Color

56.0726, 56.1039, 43.4711

## Protanomaly

53.9307, 55.9664, 44.5194

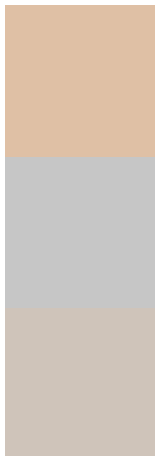
## Deuteranomaly

56.7864, 56.1470, 43.4418

## Tritanomaly

58.6387, 56.1948, 55.3330

# Monochromacy



## Original Color

56.0726, 56.1039, 43.4711

## Achromatopsia

53.6758, 56.4712, 61.4971

## Achromatomaly

54.3350, 56.2904, 54.4558

# CSS Examples

## Text

The CSS property to change the color of the text to XYZ 56.0726, 56.1039, 43.4711 is called "color". The color property can be set on classes, ids or directly on the HTML element.

This example shows how text in the color `rgb(223, 192, 165)` looks like.

```
.text, #text, p{  
    color:rgb(223, 192, 165)  
}
```

If you want to add a text shadow in that color use the text-shadow property, you can generate a text shadow directly with our [CSS Text Shadow Generator](#).

Here you see how black text with a 4 pixel rgb(223, 192, 165) colored shadow looks like.

```
.shadow{ text-shadow: 4px 4px 2px rgb(223, 192, 165) }
```

## Border

The CSS property to change the border of an element to XYZ 56.0726, 56.1039, 43.4711 is called "border". The border property can be set on classes, ids or directly on the HTML element.

This example shows the color as border, it can be applied via the CSS property "border" or "border-color".

```
.border, #border, table{ border:4px solid rgb(223, 192, 165) }
```



If only the border color should be changed use the property border-color.

```
.border{ border-color:rgb(223, 192, 165) }
```

If you want to add a box shadow in that color use:

Here you see how a box with a 4 pixel rgb(223, 192, 165) colored shadow looks like.

```
.boxshadow{ -moz-box-shadow:4px 4px 4px  
4px rgb(223, 192, 165); -webkit-box-  
shadow:4px 4px 4px 4px rgb(223, 192, 165);  
box-shadow:4px 4px 4px 4px rgb(223, 192,  
165) }
```

# Background

The CSS property to change the background color of an element to XYZ 56.0726, 56.1039, 43.4711 is called "background". The background property can be set on classes, ids or directly on the HTML element.

```
.background, #background, body{  
background: rgb(223, 192, 165) }
```

If only the background color should be changed can be used:

```
.background{ background-color: rgb(223,  
192, 165) }
```

This example shows the color as background, it is applied via the CSS property "background".

To optimize and compress your CSS code, you can use our [online CSS compressor and optimizer](#) based on csstidy. If you want to create a linear or radial gradient as background or border, check our [CSS Gradient Generator](#).

Hey! You found this booklet interesting? Support Converting Colors with the new Membership Option!

The pro membership hides all ads, plus gives you double the colors in the color bucket, and more awesome pro features!

**[Learn more, Memberships starting at \\$2.50/m!](#)**

**Follow me  
on Twitter!**

@ConvertingColor