

Converting Colors

XYZ(56.0097, 55.1046, 57.8471)

Have a look what the booklet for
XYZ(56.0097, 55.1046, 57.8471)
contains.

XYZ(56.0634, 55.1242, 58.1373)	3
<i>Conversions</i>	4
<i>Details</i>	6
<i>Harmonies</i>	12
<i>Previews</i>	24
<i>Color Blindness Simulation</i>	28
<i>CSS Examples</i>	31

Color

**XYZ(56.0634, 55.1242,
58.1373)**

Conversions

Conversions Part 1

Format	Color
Hex	D7BEC1
RGB	215, 190, 193
RGB Percent	84%, 75%, 76%
CMY	0.1569, 0.2549, 0.2431
CMYK	0.00, 0.12, 0.10, 0.16
HSL	353°, 24%, 79%
HSV	353°, 12%, 84%
XYZ	56.0634, 55.1242, 58.1373
YIQ	197.8170, 13.9370, 6.2330

Conversions

Conversions Part 2

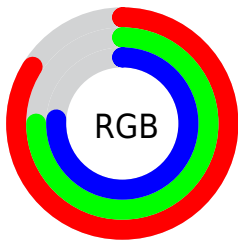
Format	Color
R _{YB}	215, 190, 193
Decimal	14139073
CIE Lab	79.11, 9.36, 1.73
CIE LCh	79, 9.515, 10.498
Yxy	55.1242, 0.3311, 0.3256
Android (android.graphics.Color)	4292329153 (0xFFD7BEC1)
YUV	197.8170, -2.3748, 15.0695
Hunter-Lab	74.2457, 4.8566, 5.5456

Details

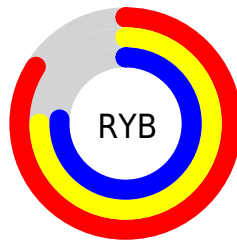
The XYZ color **56.0634, 55.1242, 58.1373** is a light color, and the websafe version is hex **CCCCCC**. A complement of this color would be **57.4214, 64.3028, 71.6756**, and the grayscale version is **53.5747, 56.3647, 61.3812**.

A 20% lighter version of the original color is **91.2947, 94.0111, 102.9567**, and **28.1765, 27.2584, 28.5873** is the 20% darker color. If you saturate the color by 10%, you get **49.7683, 45.6984, 46.2822**, and if you desaturate by 10%, it is **63.3187, 66.0368, 71.6464**.

Distribution



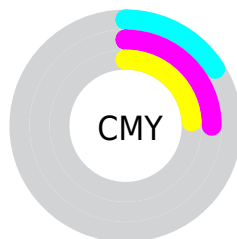
- Red (84%)
- Green (75%)
- Blue (76%)



- Red (84%)
- Yellow (75%)
- Blue (76%)



- Cyan (0%)
- Magenta (12%)
- Yellow (10%)
- Black (16%)



- Cyan (16%)
- Magenta (25%)
- Yellow (24%)

Brightness & Saturation Gradients

These gradients show how the XYZ color 56.0634, 55.1242, 58.1373 changes by changing the brightness by 10 percent. The first figure shows a shift by +10% for each color and the second figure -10%.

Similar to the brightness gradients but the following saturation gradients show a change of the XYZ color 56.0634, 55.1242, 58.1373 by changing the saturation by 10% instead.

■ 56.0634, 55.1242,
58.1373

■ 56.0634, 55.1242,
58.1373

400.0015,
406.3826, 435.3099

■ 40.4910, 39.5012,
41.5036

■ 98.2365, 97.7229,
103.6395

■ 28.1075, 27.1498,
28.3901

125.5680,
125.4674, 133.3451

■ 18.5475, 17.6858,
18.3784

157.5497,
158.0211, 168.2451

■ 11.4459, 10.7246,
11.0497

194.5472,
195.7685, 208.7581

■ 6.4371, 5.8820,
5.9857

236.9258,
239.0939, 255.3025

■ 3.1558, 2.7735,
2.7677

285.0508,

■ 1.2367, 1.0146,

288.3818, 308.2969

0.9773

339.2876,
344.0166, 368.1598

■ 0.1350, 0.0000,
0.0000

■ 0.0000, 0.0000,
0.0000

■ 56.0634, 55.1242,
58.1373

■ 56.0634, 55.1242,
58.1373

■ 49.7683, 45.6984,
46.2822

■ 63.3187, 66.0368,
71.6464

■ 44.3886, 37.6880,
36.0140

■ 71.5672, 78.4889,
86.8659

■ 39.8828, 31.0268,
27.2662

■ 80.8462, 92.5397,
103.8542

■ 36.2045, 25.6405,
19.9663

■ 81.8346, 93.1872,
108.2815

■ 33.3030, 21.4474,
14.0359

■ 31.1218, 18.3565,
9.3890

■ 29.5968, 16.2636,
5.9297

■ 28.6521, 15.0444,
3.5486

■ 28.2085, 14.5208,
2.2801

Harmonies

Analogous

The Analogous color harmony consists of three colors that are next to each other on the color wheel.



55.9085, 55.1242, 63.5768



56.0634, 55.1242, 58.1373



55.2172, 55.1242, 53.4883

Triad

The Triadic color harmony groups three colors that are evenly spaced from another and form a triangle on the color wheel.



56.0634, 55.1242, 58.1373



50.0603, 55.1242, 52.4214



51.1854, 55.1242, 70.4178

Complementary

The Complementary color scheme is a pair of colors which are on the opposite of each other on the color wheel.



56.0634, 55.1242, 58.1373



57.4214, 64.3028, 71.6756

Split Complementary

Split-complementary colors differ from the complementary color scheme. The scheme consists of three colors, the original color and two neighbors of the complement color.



49.6685, 55.1242, 67.0648



56.0634, 55.1242, 58.1373



49.0298, 55.1242, 56.6001

Square

The Square scheme is like the rectangle color scheme, but the four colors are evenly spaced on the color wheel.



56.0634, 55.1242, 58.1373



51.7320, 55.1242, 50.3229



48.8881, 55.1242, 61.9447



53.0614, 55.1242, 70.8911

Rectangle

The Rectangle color scheme consists of four colors that form a rectangle on the color wheel.



56.0634, 55.1242, 58.1373



54.2110, 55.1242, 51.3792



48.8881, 55.1242, 61.9447



50.6178, 55.1242, 69.5810

Sweetspot

The Sweet Spot groups the original color and five complimentary colors.



56.0649, 55.1266, 58.1385



91.5926, 94.7897, 102.4931



57.7362, 55.6832, 71.9955



19.4117, 19.9984, 21.5796



0.0000, 0.0000, 0.0000



20.3446, 21.4041, 23.3091

Same Dimension

The Same Dimension uses a secret algorithm to generate beautiful new colors.



56.0649, 55.1266, 58.1385



80.0474, 77.4387, 80.9506



57.7820, 59.0904, 57.0782



12.4832, 12.4448, 13.2188



16.8925, 8.6933, 1.4721



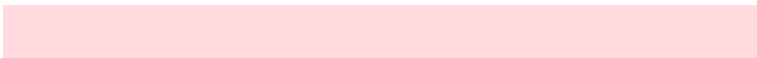
1.0395, 0.5326, 0.1972

Inverse Universe

The Inverse Universe completely reimagines the original color for something new.



56.0649, 55.1266, 58.1385



80.0474, 77.4387, 80.9506



55.5341, 59.9177, 72.9289



12.4832, 12.4448, 13.2188



16.8925, 8.6933, 1.4721



1.0395, 0.5326, 0.1972

Previews

White Background



This preview shows how the XYZ color 56.0634, 55.1242, 58.1373 looks on a white background.

Color Contrast Check

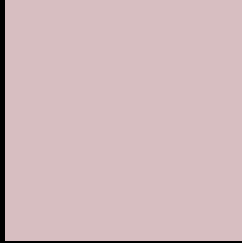
Large Text (above 18pt) WCAG AA × Fail

Any Text WCAG AA × Fail

Large Text (above 18pt) WCAG AAA × Fail

Any Text WCAG AAA × Fail

Black Background



This preview shows how the XYZ color 56.0634, 55.1242, 58.1373 looks on a black background.

Color Contrast Check

Large Text (above 18pt) WCAG AA ✓ Pass

Any Text WCAG AA ✓ Pass

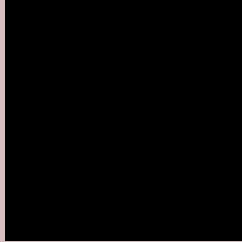
Large Text (above 18pt) WCAG AAA ✓ Pass

Any Text WCAG AAA ✓ Pass

If you want to check with other color combinations, try the [Color Contrast Checker](#).

XYZ 56.0634, 55.1242, 58.1373

Background



This preview shows how black text looks on a background with the XYZ color 56.0634, 55.1242, 58.1373.



This preview shows how white text looks on a background with the XYZ color 56.0634, 55.1242,

Color Blindness Simulation

Color vision deficiency is a very complex topic, and I could not describe the different causes any better than Wikipedia does, so if you want to learn more, you should check out their [article about color blindness](#).

Dichromacy



Original Color

56.0634, 55.1242, 58.1373

Protanopia

53.0321, 55.1578, 60.0760

Deuteranopia

56.3580, 55.2761, 58.1510



Tritanopia

57.0816, 54.8772, 64.0837

Trichromacy



Original Color

56.0634, 55.1242, 58.1373

Protanomaly

54.0971, 55.0592, 59.4060

Deuteranomaly

56.3580, 55.2761, 58.1510

Tritanomaly

56.8253, 55.1176, 61.6766

Monochromacy



Original Color

56.0634, 55.1242, 58.1373

Achromatopsia

53.6758, 56.4712, 61.4971

Achromatomaly

54.3808, 55.8531, 60.1391

CSS Examples

Text

The CSS property to change the color of the text to XYZ 56.0634, 55.1242, 58.1373 is called "color". The color property can be set on classes, ids or directly on the HTML element.

This example shows how text in the color `rgb(215, 190, 193)` looks like.

```
.text, #text, p{  
    color:rgb(215, 190, 193)  
}
```

If you want to add a text shadow in that color use the text-shadow property, you can generate a text shadow directly with our [CSS Text Shadow Generator](#).

Here you see how black text with a 4 pixel rgb(215, 190, 193) colored shadow looks like.

```
.shadow{ text-shadow: 4px 4px 2px rgb(215, 190, 193) }
```

Border

The CSS property to change the border of an element to XYZ 56.0634, 55.1242, 58.1373 is called "border". The border property can be set on classes, ids or directly on the HTML element.

This example shows the color as border, it can be applied via the CSS property "border" or "border-color".

```
.border, #border, table{ border:4px solid rgb(215, 190, 193) }
```


If only the border color should be changed use the property `border-color`.

```
.border{ border-color:rgb(215, 190, 193) }
```

If you want to add a box shadow in that color use:

Here you see how a box with a 4 pixel `rgb(215, 190, 193)` colored shadow looks like.

```
.boxshadow{ -moz-box-shadow:4px 4px 4px  
4px rgb(215, 190, 193); -webkit-box-  
shadow:4px 4px 4px 4px rgb(215, 190, 193);  
box-shadow:4px 4px 4px 4px rgb(215, 190,  
193) }
```

Background

The CSS property to change the background color of an element to XYZ 56.0634, 55.1242, 58.1373 is called "background". The background property can be set on classes, ids or directly on the HTML element.

```
.background, #background, body{  
background: rgb(215, 190, 193) }
```

If only the background color should be changed can be used:

```
.background{ background-color: rgb(215,  
190, 193) }
```

This example shows the color as background, it is applied via the CSS property "background".

To optimize and compress your CSS code, you can use our [online CSS compressor and optimizer](#) based on csstidy. If you want to create a linear or radial gradient as background or border, check our [CSS Gradient Generator](#).

Hey! You found this booklet interesting? Support Converting Colors with the new Membership Option!

The pro membership hides all ads, plus gives you double the colors in the color bucket, and more awesome pro features!

[Learn more, Memberships starting at \\$2.50/m!](#)

**Follow me
on Twitter!**

@ConvertingColor