

Converting Colors

XYZ(56.0441, 56.3631, 55.6161)

Have a look what the booklet for
XYZ(56.0441, 56.3631, 55.6161)
contains.

XYZ(56.1004, 56.5106, 55.5278)	3
<i>Conversions</i>	4
<i>Details</i>	6
<i>Harmonies</i>	12
<i>Previews</i>	24
<i>Color Blindness Simulation</i>	28
<i>CSS Examples</i>	31

Color

**XYZ(56.1004, 56.5106,
55.5278)**

Conversions

Conversions Part 1

Format	Color
Hex	D6C2BC
RGB	214, 194, 188
RGB Percent	84%, 76%, 74%
CMY	0.1608, 0.2392, 0.2627
CMYK	0.00, 0.09, 0.12, 0.16
HSL	14°, 24%, 79%
HSV	14°, 12%, 84%
XYZ	56.1004, 56.5106, 55.5278
YIQ	199.2960, 13.8460, 2.3740

Conversions

Conversions Part 2

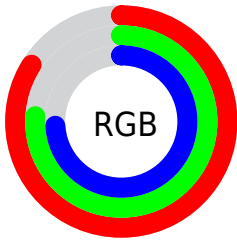
Format	Color
R _Y B	214, 196, 188
Decimal	14074556
CIE Lab	79.90, 6.04, 5.56
CIE LCh	80, 8.210, 42.643
Yxy	56.5106, 0.3337, 0.3361
Android (android.graphics.Color)	4292264636 (0xFFD6C2BC)
YUV	199.2960, -5.5689, 12.8954
Hunter-Lab	75.1735, 1.6571, 8.8262

Details

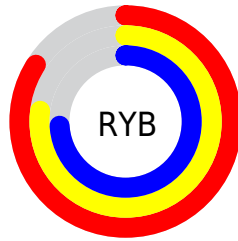
The XYZ color **56.1004, 56.5106, 55.5278** is a light color, and the websafe version is hex **CCCCCC**. A complement of this color would be **55.4321, 60.6567, 72.4050**, and the grayscale version is **54.4957, 57.3338, 62.4365**.

A 20% lighter version of the original color is **91.7547, 96.1629, 99.3132**, and **28.0493, 27.8764, 26.8240** is the 20% darker color. If you saturate the color by 10%, you get **50.5004, 48.7324, 43.1110**, and if you desaturate by 10%, it is **62.4513, 65.2420, 69.8840**.

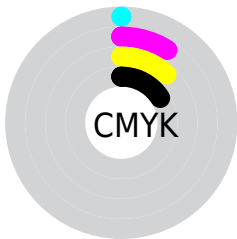
Distribution



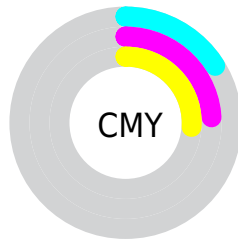
- Red (84%)
- Green (76%)
- Blue (74%)



- Red (84%)
- Yellow (77%)
- Blue (74%)



- Cyan (0%)
- Magenta (9%)
- Yellow (12%)
- Black (16%)





- Cyan (16%)
- Magenta (24%)
- Yellow (26%)

Brightness & Saturation Gradients

These gradients show how the XYZ color 56.1004, 56.5106, 55.5278 changes by changing the brightness by 10 percent. The first figure shows a shift by +10% for each color and the second figure -10%.


Similar to the brightness gradients but the following saturation gradients show a change of the XYZ color 56.1004, 56.5106, 55.5278 by changing the saturation by 10% instead.

 56.1004, 56.5106,
55.5278

 56.1004, 56.5106,
55.5278


400.1386,
411.6129, 425.2477

 40.5207, 40.6124,
39.4230

 98.2903, 99.7507,
99.7927

 28.1308, 28.0164,
26.7786


125.6313,
127.8615, 128.7899

 18.5652, 18.3380,
17.1760


157.6234,
160.8120, 162.9217

 11.4587, 11.1929,
10.1968

194.6320,
198.9864, 202.6066

 6.4458, 6.1968,
5.4223

237.0225,
242.7694, 248.2631

 3.1612, 2.9651,
2.4341

285.1602,

 1.2396, 1.1135,

292.5452, 300.3097

0.8049

339.4105,
348.6982, 359.1651

■ 0.1373, 0.0000,
0.0000

■ 0.0000, 0.0000,
0.0000

■ 56.1004, 56.5106,
55.5278

■ 56.1004, 56.5106,
55.5278

■ 50.5004, 48.7324,
43.1110

■ 62.4513, 65.2420,
69.8840

■ 45.6185, 41.8677,
32.5464

■ 69.5752, 74.9499,
86.2542

■ 41.4263, 35.8846,
23.7460

■ 77.4988, 85.6661,
104.7137

■ 37.8917, 30.7470,
16.6126

■ 81.5417, 93.0362,
108.2678

■ 34.9797, 26.4158,
11.0399

■ 32.6522, 22.8490,
6.9092

■ 30.8663, 20.0004,
4.0844

■ 29.5725, 17.8184,
2.4028

■ 28.8476, 16.5281,
1.6698

Harmonies

Analogous

The Analogous color harmony consists of three colors that are next to each other on the color wheel.



56.8954, 56.5106, 59.5460



56.1004, 56.5106, 55.5278



54.6721, 56.5106, 53.1901

Triad

The Triadic color harmony groups three colors that are evenly spaced from another and form a triangle on the color wheel.



56.1004, 56.5106, 55.5278



50.7145, 56.5106, 58.8363



54.4152, 56.5106, 70.9143

Complementary

The Complementary color scheme is a pair of colors which are on the opposite of each other on the color wheel.



56.1004, 56.5106, 55.5278



55.4321, 60.6567, 72.4050

Split Complementary

Split-complementary colors differ from the complementary color scheme. The scheme consists of three colors, the original color and two neighbors of the complement color.



52.7625, 56.5106, 70.7000



56.1004, 56.5106, 55.5278



50.6489, 56.5106, 63.5585

Square

The Square scheme is like the rectangle color scheme, but the four colors are evenly spaced on the color wheel.



56.1004, 56.5106, 55.5278



51.5726, 56.5106, 55.0314



51.3917, 56.5106, 67.9508



55.9090, 56.5106, 68.5220

Rectangle

The Rectangle color scheme consists of four colors that form a rectangle on the color wheel.



56.1004, 56.5106, 55.5278



53.5642, 56.5106, 52.8210



51.3917, 56.5106, 67.9508



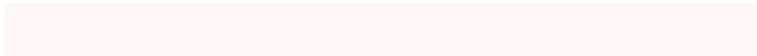
53.8593, 56.5106, 71.1481

Sweetspot

The Sweet Spot groups the original color and five complimentary colors.



56.1020, 56.5131, 55.5290



90.9992, 94.4570, 99.6621



57.1457, 54.8355, 67.4842



19.3190, 20.0002, 20.9716



0.0000, 0.0000, 0.0000



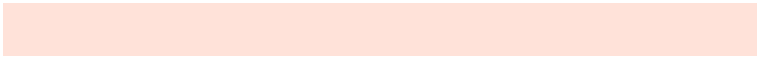
20.3446, 21.4041, 23.3091

Same Dimension

The Same Dimension uses a secret algorithm to generate beautiful new colors.



56.1020, 56.5131, 55.5290



80.8150, 80.4230, 76.7391



59.0333, 62.3757, 56.5061



12.6537, 12.8815, 12.9802



17.5025, 10.1221, 1.0313



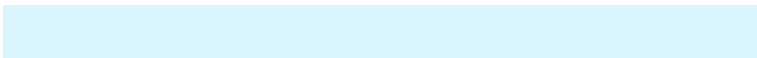
1.1197, 0.7385, 0.0835

Inverse Universe

The Inverse Universe completely reimagines the original color for something new.



55.4321, 60.6567, 72.4050



79.5976, 87.9466, 107.3879



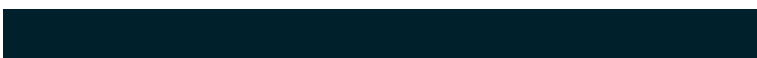
52.4747, 54.7419, 71.4192



12.5378, 13.5989, 15.9016



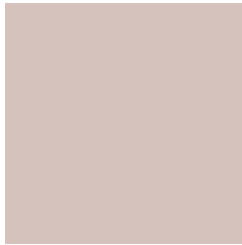
15.5060, 19.2737, 41.3561



0.9958, 1.2836, 2.5146

Previews

White Background



This preview shows how the XYZ color 56.1004, 56.5106, 55.5278 looks on a white background.

Color Contrast Check

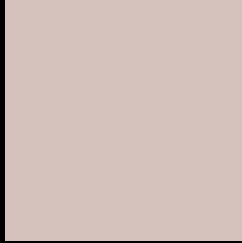
Large Text (above 18pt) WCAG AA × Fail

Any Text WCAG AA × Fail

Large Text (above 18pt) WCAG AAA × Fail

Any Text WCAG AAA × Fail

Black Background



This preview shows how the XYZ color 56.1004, 56.5106, 55.5278 looks on a black background.

Color Contrast Check

Large Text (above 18pt) WCAG AA ✓ Pass

Any Text WCAG AA ✓ Pass

Large Text (above 18pt) WCAG AAA ✓ Pass

Any Text WCAG AAA ✓ Pass

If you want to check with other color combinations, try the [Color Contrast Checker](#).

XYZ 56.1004, 56.5106, 55.5278

Background



This preview shows how black text looks on a background with the XYZ color 56.1004, 56.5106, 55.5278.



This preview shows how white text looks on a background with the XYZ color 56.1004, 56.5106,

Color Blindness Simulation

Color vision deficiency is a very complex topic, and I could not describe the different causes any better than Wikipedia does, so if you want to learn more, you should check out their [article about color blindness](#).

Dichromacy



Original Color

56.1004, 56.5106, 55.5278

Protanopia

54.1624, 56.4876, 56.7637

Deuteranopia

57.5267, 56.2646, 55.4051



Tritanopia

58.0903, 56.3168, 66.2011

Trichromacy



Original Color

56.1004, 56.5106, 55.5278

Protanomaly

54.9377, 56.5639, 56.1665

Deuteranomaly

56.8402, 56.2355, 55.4357

Tritanomaly

57.1828, 56.2699, 61.8801

Monochromacy



Original Color

56.1004, 56.5106, 55.5278

Achromatopsia

54.2854, 57.1125, 62.1955

Achromatomaly

54.7184, 56.7100, 59.6919

CSS Examples

Text

The CSS property to change the color of the text to XYZ 56.1004, 56.5106, 55.5278 is called "color". The color property can be set on classes, ids or directly on the HTML element.

This example shows how text in the color rgb(214, 194, 188) looks like.

```
.text, #text, p{  
    color:rgb(214, 194, 188)  
}
```

If you want to add a text shadow in that color use the text-shadow property, you can generate a text shadow directly with our [CSS Text Shadow Generator](#).

Here you see how black text with a 4 pixel rgb(214, 194, 188) colored shadow looks like.

```
.shadow{ text-shadow: 4px 4px 2px rgb(214, 194, 188) }
```

Border

The CSS property to change the border of an element to XYZ 56.1004, 56.5106, 55.5278 is called "border". The border property can be set on classes, ids or directly on the HTML element.

This example shows the color as border, it can be applied via the CSS property "border" or "border-color".

```
.border, #border, table{ border:4px solid rgb(214, 194, 188) }
```


If only the border color should be changed use the property `border-color`.

```
.border{ border-color:rgb(214, 194, 188) }
```

If you want to add a box shadow in that color use:

Here you see how a box with a 4 pixel `rgb(214, 194, 188)` colored shadow looks like.

```
.boxshadow{ -moz-box-shadow:4px 4px 4px  
4px rgb(214, 194, 188); -webkit-box-  
shadow:4px 4px 4px 4px rgb(214, 194, 188);  
box-shadow:4px 4px 4px 4px rgb(214, 194,  
188) }
```

Background

The CSS property to change the background color of an element to XYZ 56.1004, 56.5106, 55.5278 is called "background". The background property can be set on classes, ids or directly on the HTML element.

```
.background, #background, body{  
background: rgb(214, 194, 188) }
```

If only the background color should be changed can be used:

```
.background{ background-color: rgb(214,  
194, 188) }
```

This example shows the color as background, it is applied via the CSS property "background".

To optimize and compress your CSS code, you can use our [online CSS compressor and optimizer](#) based on csstidy. If you want to create a linear or radial gradient as background or border, check our [CSS Gradient Generator](#).

Hey! You found this booklet interesting? Support Converting Colors with the new Membership Option!

The pro membership hides all ads, plus gives you double the colors in the color bucket, and more awesome pro features!

[Learn more, Memberships starting at \\$2.50/m!](#)

**Follow me
on Twitter!**

@ConvertingColor