

Converting Colors

XYZ(56.0684, 56.0108, 41.4844)

Have a look what the booklet for
XYZ(56.0684, 56.0108, 41.4844)
contains.

XYZ(56.0231, 56.1198, 41.5977)	3
<i>Conversions</i>	4
<i>Details</i>	6
<i>Harmonies</i>	12
<i>Previews</i>	24
<i>Color Blindness Simulation</i>	28
<i>CSS Examples</i>	31

Color

**XYZ(56.0231, 56.1198,
41.5977)**

Conversions

Conversions Part 1

Format	Color
Hex	E0C0A1
RGB	224, 192, 161
RGB Percent	88%, 75%, 63%
CMY	0.1216, 0.2470, 0.3686
CMYK	0.00, 0.14, 0.28, 0.12
HSL	30°, 50%, 75%
HSV	30°, 28%, 88%
XYZ	56.0231, 56.1198, 41.5977
YIQ	198.0340, 29.0230, -2.8570

Conversions

Conversions Part 2

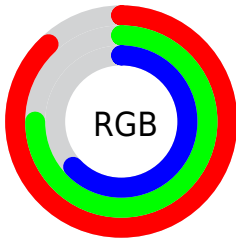
Format	Color
R_YB	224, 222, 161
Decimal	14729377
CIE _{Lab}	79.68, 6.80, 19.85
CIE _{LCh}	80, 20.980, 71.083
Yxy	56.1198, 0.3644, 0.3650
Android (android.graphics.Color)	4292919457 (0xFFE0C0A1)
YUV	198.0340, -18.2578, 22.7722
Hunter-Lab	74.9131, 2.3915, 19.5167

Details

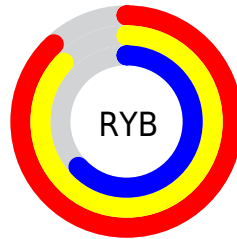
The XYZ color **56.0231, 56.1198, 41.5977** is a light color, and the websafe version is hex **FFCC99**. A complement of this color would be **47.2219, 51.0972, 77.8950**, and the grayscale version is **53.7935, 56.5950, 61.6319**.

A 20% lighter version of the original color is **87.2021, 93.3527, 78.3886**, and **28.1414, 27.8942, 18.3689** is the 20% darker color. If you saturate the color by 10%, you get **51.8203, 50.5971, 31.3088**, and if you desaturate by 10%, it is **60.7758, 62.1754, 53.8171**.

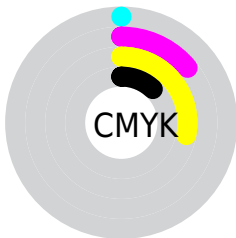
Distribution



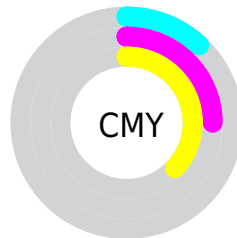
- Red (88%)
- Green (75%)
- Blue (63%)



- Red (88%)
- Yellow (87%)
- Blue (63%)



- Cyan (0%)
- Magenta (14%)
- Yellow (28%)
- Black (12%)





- Cyan (12%)
- Magenta (25%)
- Yellow (37%)

Brightness & Saturation Gradients


These gradients show how the XYZ color 56.0231, 56.1198, 41.5977 changes by changing the brightness by 10 percent. The first figure shows a shift by +10% for each color and the second figure -10%.


Similar to the brightness gradients but the following saturation gradients show a change of the XYZ color 56.0231, 56.1198, 41.5977 by changing the saturation by 10% instead.


 56.0231, 56.1198,
41.5977


 56.0231, 56.1198,
41.5977


399.8522,
410.1428, 368.5629

 40.4585, 40.2990,
28.4632


 98.1780, 99.1797,
78.8539

 28.0820, 27.7717,
18.4330

 125.4990,
127.1876, 103.8127

 18.5283, 18.1537,
11.0887

157.4695,
160.0266, 133.5500

 11.4319, 11.0604,
6.0116

194.4548,
198.0812, 168.4843

 6.4275, 6.1075,
2.7832

236.8204,
241.7357, 209.0342

 3.1499, 2.9105,
0.9850

284.9316,

 1.2335, 1.0852,

291.3746, 255.6182

0.0000

339.1537,
347.3821, 308.6550

■ 0.1326, 0.0000,
0.0000

■ 0.0000, 0.0000,
0.0000

■ 56.0231, 56.1198,
41.5977

■ 56.0231, 56.1198,
41.5977

■ 51.8203, 50.5971,
31.3088

■ 60.7758, 62.1754,
53.8171

■ 48.1398, 45.5834,
22.8458

■ 66.0958, 68.7715,
68.0569

■ 44.9580, 41.0639,
16.0996

■ 72.0049, 75.9255,
84.4057

■ 42.2471, 37.0202,
10.9480

■ 78.5224, 83.6513,
102.9457

■ 39.9764, 33.4321,
7.2520

■ 82.6310, 90.7482,
107.7688

■ 38.1100, 30.2772,
4.8484

■ 84.5505, 94.5873,
108.4086

■ 36.5990, 27.5274,
3.5050

■ 36.3423, 27.0509,
3.3059

Harmonies

Analogous

The Analogous color harmony consists of three colors that are next to each other on the color wheel.



59.7144, 56.1198, 47.0294



56.0231, 56.1198, 41.5977



51.7907, 56.1198, 40.9629

Triad

The Triadic color harmony groups three colors that are evenly spaced from another and form a triangle on the color wheel.



56.0231, 56.1198, 41.5977



45.7438, 56.1198, 65.6967



58.8704, 56.1198, 80.4160

Complementary

The Complementary color scheme is a pair of colors which are on the opposite of each other on the color wheel.



56.0231, 56.1198, 41.5977



47.2219, 51.0972, 77.8950

Split Complementary

Split-complementary colors differ from the complementary color scheme. The scheme consists of three colors, the original color and two neighbors of the complement color.



54.9203, 56.1198, 86.9576



56.0231, 56.1198, 41.5977



47.4366, 56.1198, 77.7412

Square

The Square scheme is like the rectangle color scheme, but the four colors are evenly spaced on the color wheel.



56.0231, 56.1198, 41.5977



46.0042, 56.1198, 53.8540



50.7443, 56.1198, 85.9187



61.4174, 56.1198, 68.9792

Rectangle

The Rectangle color scheme consists of four colors that form a rectangle on the color wheel.



56.0231, 56.1198, 41.5977



49.2470, 56.1198, 43.2345



50.7443, 56.1198, 85.9187



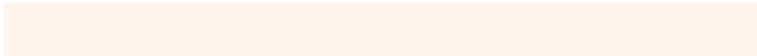
57.6542, 56.1198, 83.3246

Sweetspot

The Sweet Spot groups the original color and five complimentary colors.



56.0246, 56.1224, 41.5989



88.7212, 92.3221, 91.4384



53.1729, 45.2125, 56.6992



18.7476, 19.4633, 18.9130



0.0000, 0.0000, 0.0000



20.3446, 21.4041, 23.3091

Same Dimension

The Same Dimension uses a secret algorithm to generate beautiful new colors.



56.0246, 56.1224, 41.5989



71.6223, 70.6713, 47.0585



63.5480, 71.1693, 44.1067



14.2615, 14.8089, 14.4135



21.2685, 15.9748, 1.9625



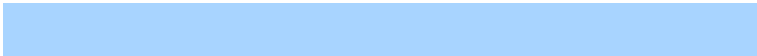
1.5637, 1.2862, 0.1659

Inverse Universe

The Inverse Universe completely reimagines the original color for something new.



47.2219, 51.0972, 77.8950



57.8888, 62.8306, 103.6842



41.0823, 38.8179, 75.8484



13.5246, 14.3883, 17.4521



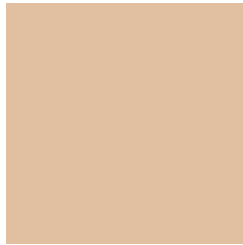
11.4338, 10.3371, 42.4410



0.8821, 0.8957, 2.9716

Previews

White Background



This preview shows how the XYZ color 56.0231, 56.1198, 41.5977 looks on a white background.

Color Contrast Check

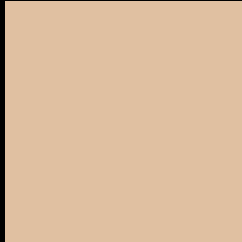
Large Text (above 18pt) WCAG AA × Fail

Any Text WCAG AA × Fail

Large Text (above 18pt) WCAG AAA × Fail

Any Text WCAG AAA × Fail

Black Background



This preview shows how the XYZ color 56.0231, 56.1198, 41.5977 looks on a black background.

Color Contrast Check

Large Text (above 18pt) WCAG AA ✓ Pass

Any Text WCAG AA ✓ Pass

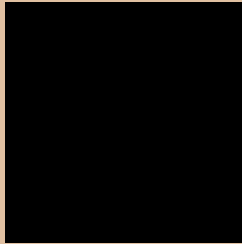
Large Text (above 18pt) WCAG AAA ✓ Pass

Any Text WCAG AAA ✓ Pass

If you want to check with other color combinations, try the [Color Contrast Checker](#).

XYZ 56.0231, 56.1198, 41.5977

Background



This preview shows how black text looks on a background with the XYZ color 56.0231, 56.1198, 41.5977.



This preview shows how white text looks on a background with the XYZ color 56.0231, 56.1198,

Color Blindness Simulation

Color vision deficiency is a very complex topic, and I could not describe the different causes any better than Wikipedia does, so if you want to learn more, you should check out their [article about color blindness](#).

Dichromacy



Original Color

56.0231, 56.1198, 41.5977

Protanopia

52.9616, 56.1682, 43.1721

Deuteranopia

57.1596, 56.0581, 41.5259



Tritanopia

60.4146, 55.9929, 62.8819

Trichromacy



Original Color

56.0231, 56.1198, 41.5977

Protanomaly

53.8575, 55.9707, 42.6152

Deuteranomaly

56.7424, 56.1657, 41.5686

Tritanomaly

58.5247, 55.8425, 54.1485

Monochromacy



Original Color

56.0231, 56.1198, 41.5977

Achromatopsia

53.6758, 56.4712, 61.4971

Achromatomaly

54.2290, 56.2480, 53.8977

CSS Examples

Text

The CSS property to change the color of the text to XYZ 56.0231, 56.1198, 41.5977 is called "color". The color property can be set on classes, ids or directly on the HTML element.

This example shows how text in the color `rgb(224, 192, 161)` looks like.

```
.text, #text, p{  
    color:rgb(224, 192, 161)  
}
```

If you want to add a text shadow in that color use the text-shadow property, you can generate a text shadow directly with our [CSS Text Shadow Generator](#).

Here you see how black text with a 4 pixel rgb(224, 192, 161) colored shadow looks like.

```
.shadow{ text-shadow: 4px 4px 2px rgb(224, 192, 161) }
```

Border

The CSS property to change the border of an element to XYZ 56.0231, 56.1198, 41.5977 is called "border". The border property can be set on classes, ids or directly on the HTML element.

This example shows the color as border, it can be applied via the CSS property "border" or "border-color".

```
.border, #border, table{ border:4px solid rgb(224, 192, 161) }
```


If only the border color should be changed use the property `border-color`.

```
.border{ border-color:rgb(224, 192, 161) }
```

If you want to add a box shadow in that color use:

Here you see how a box with a 4 pixel `rgb(224, 192, 161)` colored shadow looks like.

```
.boxshadow{ -moz-box-shadow:4px 4px 4px  
4px rgb(224, 192, 161); -webkit-box-  
shadow:4px 4px 4px 4px rgb(224, 192, 161);  
box-shadow:4px 4px 4px 4px rgb(224, 192,  
161) }
```

Background

The CSS property to change the background color of an element to XYZ 56.0231, 56.1198, 41.5977 is called "background". The background property can be set on classes, ids or directly on the HTML element.

```
.background, #background, body{  
background: rgb(224, 192, 161) }
```

If only the background color should be changed can be used:

```
.background{ background-color: rgb(224,  
192, 161) }
```

This example shows the color as background, it is applied via the CSS property "background".

To optimize and compress your CSS code, you can use our [online CSS compressor and optimizer](#) based on csstidy. If you want to create a linear or radial gradient as background or border, check our [CSS Gradient Generator](#).

Hey! You found this booklet interesting? Support Converting Colors with the new Membership Option!

The pro membership hides all ads, plus gives you double the colors in the color bucket, and more awesome pro features!

[Learn more, Memberships starting at \\$2.50/m!](#)

**Follow me
on Twitter!**

@ConvertingColor