

Converting Colors

XYZ(56.0762, 56.2483, 60.2550)

Have a look what the booklet for
XYZ(56.0762, 56.2483, 60.2550)
contains.

XYZ(56.1196, 56.4180, 60.1565)	3
<i>Conversions</i>	4
<i>Details</i>	6
<i>Harmonies</i>	12
<i>Previews</i>	24
<i>Color Blindness Simulation</i>	28
<i>CSS Examples</i>	31

Color

**XYZ(56.1196, 56.4180,
60.1565)**

Conversions

Conversions Part 1

Format	Color
Hex	D3C2C4
RGB	211, 194, 196
RGB Percent	83%, 76%, 77%
CMY	0.1725, 0.2392, 0.2314
CMYK	0.00, 0.08, 0.07, 0.17
HSL	353°, 16%, 79%
HSV	353°, 8%, 83%
XYZ	56.1196, 56.4180, 60.1565
YIQ	199.3110, 9.4900, 4.2260

Conversions

Conversions Part 2

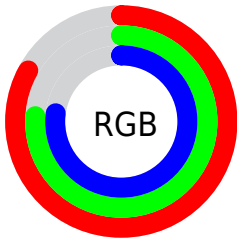
Format	Color
R _Y B	211, 194, 196
Decimal	13877956
CIE Lab	79.85, 6.31, 1.15
CIE LCh	80, 6.417, 10.320
Yxy	56.4180, 0.3250, 0.3267
Android (android.graphics.Color)	4292068036 (0xFFD3C2C4)
YUV	199.3110, -1.6323, 10.2513
Hunter-Lab	75.1119, 1.9198, 5.0935

Details

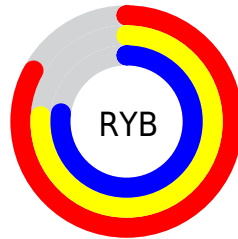
The XYZ color **56.1196, 56.4180, 60.1565** is a light color, and the websafe version is hex **CCCCCC**. A complement of this color would be **57.0532, 62.6628, 69.4129**, and the grayscale version is **54.4835, 57.3209, 62.4224**.

A 20% lighter version of the original color is **93.1552, 96.7231, 106.6881**, and **27.9709, 27.7771, 29.4785** is the 20% darker color. If you saturate the color by 10%, you get **49.7634, 46.8892, 48.2214**, and if you desaturate by 10%, it is **63.4089, 67.3905, 73.7020**.

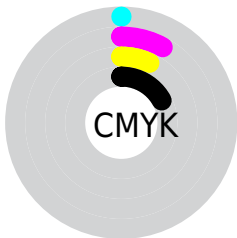
Distribution



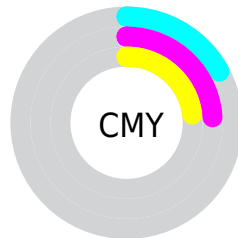
- Red (83%)
- Green (76%)
- Blue (77%)



- Red (83%)
- Yellow (76%)
- Blue (77%)



- Cyan (0%)
- Magenta (8%)
- Yellow (7%)
- Black (17%)





- Cyan (17%)
- Magenta (24%)
- Yellow (23%)

Brightness & Saturation Gradients


These gradients show how the XYZ color 56.1196, 56.4180, 60.1565 changes by changing the brightness by 10 percent. The first figure shows a shift by +10% for each color and the second figure -10%.


Similar to the brightness gradients but the following saturation gradients show a change of the XYZ color 56.1196, 56.4180, 60.1565 by changing the saturation by 10% instead.


 56.1196, 56.4180,
60.1565

 56.1196, 56.4180,
60.1565

400.2098,
411.2649, 442.9950

 40.5362, 40.5382,
43.1187


 98.3182, 99.6155,
106.6023

 28.1429, 27.9584,
29.6461


125.6641,
127.7019, 136.8473

 18.5744, 18.2943,
19.3204


157.6616,
160.6260, 172.3317

 11.4654, 11.1615,
11.7229


194.6760,
198.7721, 213.4742

 6.4503, 6.1756,
6.4350

237.0727,
242.5246, 260.6932

 3.1640, 2.9521,
3.0383

285.2170,

 1.2411, 1.1068,

292.2680, 314.4074

1.1142

339.4742,
348.3866, 375.0351

■ 0.1385, 0.0000,
0.0000

■ 0.0000, 0.0000,
0.0000

■ 56.1196, 56.4180,
60.1565

■ 56.1196, 56.4180,
60.1565

■ 49.7634, 46.8892,
48.2214

■ 63.4089, 67.3905,
73.7020

■ 44.2979, 38.7370,
37.8331

■ 71.6619, 79.8555,
88.9110

■ 39.6847, 31.8999,
28.9293

■ 80.1739, 92.3889,
105.5919

■ 35.8805, 26.3089,
21.4420

■ 80.6743, 92.5891,
108.2272

■ 32.8384, 21.8887,
15.2979

■ 30.5065, 18.5560,
10.4170

■ 28.8263, 16.2161,
6.7109

■ 27.7300, 14.7585,
4.0794

■ 27.1233, 14.0239,
2.4016

Harmonies

Analogous

The Analogous color harmony consists of three colors that are next to each other on the color wheel.



56.0109, 56.4180, 63.8711



56.1196, 56.4180, 60.1565



55.5513, 56.4180, 56.9146

Triad

The Triadic color harmony groups three colors that are evenly spaced from another and form a triangle on the color wheel.



56.1196, 56.4180, 60.1565



52.0230, 56.4180, 56.1336



52.7866, 56.4180, 68.4169

Complementary

The Complementary color scheme is a pair of colors which are on the opposite of each other on the color wheel.



56.1196, 56.4180, 60.1565



57.0532, 62.6628, 69.4129

Split Complementary

Split-complementary colors differ from the complementary color scheme. The scheme consists of three colors, the original color and two neighbors of the complement color.



51.7410, 56.4180, 66.1773



56.1196, 56.4180, 60.1565



51.3051, 56.4180, 59.0511

Square

The Square scheme is like the rectangle color scheme, but the four colors are evenly spaced on the color wheel.



56.1196, 56.4180, 60.1565



53.1772, 56.4180, 54.6550



51.2028, 56.4180, 62.7206



54.0725, 56.4180, 68.7422

Rectangle

The Rectangle color scheme consists of four colors that form a rectangle on the color wheel.



56.1196, 56.4180, 60.1565



54.8704, 56.4180, 55.4198



51.2028, 56.4180, 62.7206



52.3959, 56.4180, 67.8589

Sweetspot

The Sweet Spot groups the original color and five complimentary colors.



56.1212, 56.4205, 60.1577



92.7282, 96.5026, 104.5928



57.2705, 56.8057, 69.5749



19.8720, 20.6921, 22.4323



0.0000, 0.0000, 0.0000



20.3446, 21.4041, 23.3091

Same Dimension

The Same Dimension uses a secret algorithm to generate beautiful new colors.



56.1212, 56.4205, 60.1577



84.0338, 83.4301, 88.3878



57.3117, 59.1627, 59.4408



11.8644, 11.8305, 12.5618



16.3366, 8.4075, 1.4128



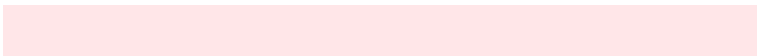
0.9327, 0.4778, 0.1807

Inverse Universe

The Inverse Universe completely reimagines the original color for something new.



56.1212, 56.4205, 60.1577



84.0338, 83.4301, 88.3878



55.7836, 59.7256, 70.2169



11.8644, 11.8305, 12.5618



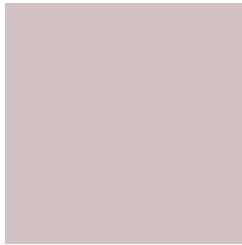
16.3366, 8.4075, 1.4128



0.9327, 0.4778, 0.1807

Previews

White Background



This preview shows how the XYZ color 56.1196, 56.4180, 60.1565 looks on a white background.

Color Contrast Check

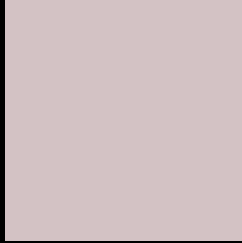
Large Text (above 18pt) WCAG AA × Fail

Any Text WCAG AA × Fail

Large Text (above 18pt) WCAG AAA × Fail

Any Text WCAG AAA × Fail

Black Background



This preview shows how the XYZ color 56.1196, 56.4180, 60.1565 looks on a black background.

Color Contrast Check

Large Text (above 18pt) WCAG AA ✓ Pass

Any Text WCAG AA ✓ Pass

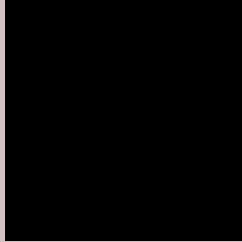
Large Text (above 18pt) WCAG AAA ✓ Pass

Any Text WCAG AAA ✓ Pass

If you want to check with other color combinations, try the [Color Contrast Checker](#).

XYZ 56.1196, 56.4180, 60.1565

Background



This preview shows how black text looks on a background with the XYZ color 56.1196, 56.4180, 60.1565.



This preview shows how white text looks on a background with the XYZ color 56.1196, 56.4180,

Color Blindness Simulation

Color vision deficiency is a very complex topic, and I could not describe the different causes any better than Wikipedia does, so if you want to learn more, you should check out their [article about color blindness](#).

Dichromacy



Original Color

56.1196, 56.4180, 60.1565

Protanopia

54.2467, 56.4272, 61.4585

Deuteranopia

57.7269, 56.5902, 60.1050



Tritanopia

57.5527, 56.3504, 66.8748

Trichromacy



Original Color

56.1196, 56.4180, 60.1565

Protanomaly

54.9948, 56.4902, 60.8285

Deuteranomaly

57.0581, 56.5725, 60.1369

Tritanomaly

57.0008, 56.4488, 64.3913

Monochromacy



Original Color

56.1196, 56.4180, 60.1565

Achromatopsia

54.2854, 57.1125, 62.1955

Achromatomaly

54.7879, 56.7062, 61.4838

CSS Examples

Text

The CSS property to change the color of the text to XYZ 56.1196, 56.4180, 60.1565 is called "color". The color property can be set on classes, ids or directly on the HTML element.

This example shows how text in the color rgb(211, 194, 196) looks like.

```
.text, #text, p{  
    color:rgb(211, 194, 196)  
}
```

If you want to add a text shadow in that color use the text-shadow property, you can generate a text shadow directly with our [CSS Text Shadow Generator](#).

Here you see how black text with a 4 pixel rgb(211, 194, 196) colored shadow looks like.

```
.shadow{ text-shadow: 4px 4px 2px rgb(211, 194, 196) }
```

Border

The CSS property to change the border of an element to XYZ 56.1196, 56.4180, 60.1565 is called "border". The border property can be set on classes, ids or directly on the HTML element.

This example shows the color as border, it can be applied via the CSS property "border" or "border-color".

```
.border, #border, table{ border:4px solid rgb(211, 194, 196) }
```


If only the border color should be changed use the property `border-color`.

```
.border{ border-color:rgb(211, 194, 196) }
```

If you want to add a box shadow in that color use:

Here you see how a box with a 4 pixel `rgb(211, 194, 196)` colored shadow looks like.

```
.boxshadow{ -moz-box-shadow:4px 4px 4px  
4px rgb(211, 194, 196); -webkit-box-  
shadow:4px 4px 4px 4px rgb(211, 194, 196);  
box-shadow:4px 4px 4px 4px rgb(211, 194,  
196) }
```

Background

The CSS property to change the background color of an element to XYZ 56.1196, 56.4180, 60.1565 is called "background". The background property can be set on classes, ids or directly on the HTML element.

```
.background, #background, body{  
background: rgb(211, 194, 196) }
```

If only the background color should be changed can be used:

```
.background{ background-color: rgb(211,  
194, 196) }
```

This example shows the color as background, it is applied via the CSS property "background".

To optimize and compress your CSS code, you can use our [online CSS compressor and optimizer](#) based on csstidy. If you want to create a linear or radial gradient as background or border, check our [CSS Gradient Generator](#).

Hey! You found this booklet interesting? Support Converting Colors with the new Membership Option!

The pro membership hides all ads, plus gives you double the colors in the color bucket, and more awesome pro features!

[Learn more, Memberships starting at \\$2.50/m!](#)

**Follow me
on Twitter!**

@ConvertingColor