

Converting Colors

XYZ(56.1026, 55.9585, 65.6025)

Have a look what the booklet for
XYZ(56.1026, 55.9585, 65.6025)
contains.

XYZ(56.1018, 55.9576, 65.6016)	3
<i>Conversions</i>	4
<i>Details</i>	6
<i>Harmonies</i>	12
<i>Previews</i>	24
<i>Color Blindness Simulation</i>	28
<i>CSS Examples</i>	31

Color

**XYZ(56.1018, 55.9576,
65.6016)**

Conversions

Conversions Part 1

Format	Color
Hex	D0C1CD
RGB	208, 193, 205
RGB Percent	82%, 76%, 80%
CMY	0.1843, 0.2431, 0.1961
CMYK	0.00, 0.07, 0.01, 0.18
HSL	312°, 14%, 79%
HSV	312°, 7%, 82%
XYZ	56.1018, 55.9576, 65.6016
YIQ	198.8530, 5.0880, 6.9120

Conversions

Conversions Part 2

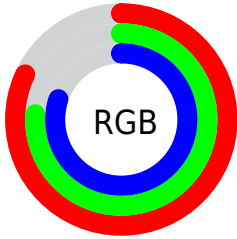
Format	Color
R_{YB}	208, 193, 205
Decimal	13681101
CIE _{Lab}	79.59, 7.40, -4.11
CIE _{LCh}	80, 8.461, 330.936
Yxy	55.9576, 0.3158, 0.3150
Android (android.graphics.Color)	4291871181 (0xFFD0C1CD)
YUV	198.8530, 3.0305, 8.0219
Hunter-Lab	74.8048, 2.9623, 0.3678

Details

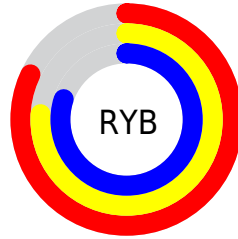
The XYZ color **56.1018, 55.9576, 65.6016** is a light color, and the websafe version is hex **CCCCCC**. A complement of this color would be **54.5141, 60.4362, 61.0196**, and the grayscale version is **54.1775, 56.9989, 62.0718**.

A 20% lighter version of the original color is **93.1657, 96.2314, 108.2719**, and **28.1450, 27.5696, 33.1162** is the 20% darker color. If you saturate the color by 10%, you get **51.3281, 47.2027, 61.5657**, and if you desaturate by 10%, it is **61.5387, 66.0161, 69.9259**.

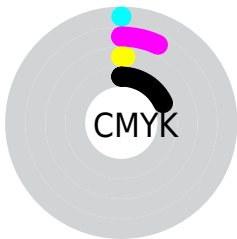
Distribution



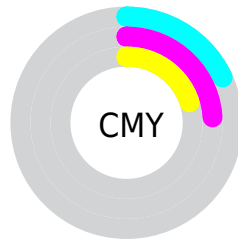
- Red (82%)
- Green (76%)
- Blue (80%)



- Red (82%)
- Yellow (76%)
- Blue (80%)



- Cyan (0%)
- Magenta (7%)
- Yellow (1%)
- Black (18%)



- Cyan (18%)
- Magenta (24%)
- Yellow (20%)

Brightness & Saturation Gradients

These gradients show how the XYZ color 56.1018, 55.9576, 65.6016 changes by changing the brightness by 10 percent. The first figure shows a shift by +10% for each color and the second figure -10%.

Similar to the brightness gradients but the following saturation gradients show a change of the XYZ color 56.1018, 55.9576, 65.6016 by changing the saturation by 10% instead.

■ 56.1018, 55.9576,
65.6016

■ 56.1018, 55.9576,
65.6016

400.1438,
409.5317, 463.3160

■ 40.5219, 40.1689,
47.4946

■ 98.2924, 98.9426,
114.5359

■ 28.1317, 27.6703,
33.0697

125.6337,
126.9077, 146.2003

■ 18.5659, 18.0773,
21.9083

157.6262,
159.7004, 183.2209

■ 11.4592, 11.0055,
13.5919

194.6352,
197.7051, 226.0162

■ 6.4461, 6.0705,
7.7019

237.0262,
241.3062, 275.0048

■ 3.1614, 2.8880,
3.8197

285.1643,

■ 1.2397, 1.0735,

290.8880, 330.6053

1.5270

339.4151,
346.8351, 393.2362

■ 0.1374, 0.0000,
0.2379

■ 0.0000, 0.0000,
0.0000

■ 56.1018, 55.9576,
65.6016

■ 56.1018, 55.9576,
65.6016

■ 51.3281, 47.2027,
61.5657

■ 61.5387, 66.0161,
69.9259

■ 47.1860, 39.6903,
57.8050

■ 67.6595, 77.4214,
74.5438

■ 43.6480, 33.3654,
54.3106

■ 74.3602, 89.9650,
79.4220

■ 40.6833, 28.1661,
51.0717

■ 74.9100, 90.1850,
82.3173

■ 38.2579, 24.0245,
48.0763

■ 75.4736, 90.4104,
85.2850

■ 36.3341, 20.8658,
45.3116

■ 76.0510, 90.6414,
88.3257

■ 34.8696, 18.6052,
42.7627

■ 76.6424, 90.8779,
91.4399

■ 33.8146, 17.1435,
40.4126

■ 77.2478, 91.1201,
94.6280

■ 33.1020, 16.3466,
38.2383

■ 77.8674, 91.3679,
97.8906

Harmonies

Analogous

The Analogous color harmony consists of three colors that are next to each other on the color wheel.



54.8883, 55.9576, 69.3371



56.1018, 55.9576, 65.6016



56.5300, 55.9576, 60.7751

Triad

The Triadic color harmony groups three colors that are evenly spaced from another and form a triangle on the color wheel.



56.1018, 55.9576, 65.6016



53.1325, 55.9576, 52.0189



50.4247, 55.9576, 65.8810

Complementary

The Complementary color scheme is a pair of colors which are on the opposite of each other on the color wheel.



56.1018, 55.9576, 65.6016



54.5141, 60.4362, 61.0196

Split Complementary

Split-complementary colors differ from the complementary color scheme. The scheme consists of three colors, the original color and two neighbors of the complement color.



49.9766, 55.9576, 61.0818



56.1018, 55.9576, 65.6016



51.5193, 55.9576, 53.2284

Square

The Square scheme is like the rectangle color scheme, but the four colors are evenly spaced on the color wheel.



56.1018, 55.9576, 65.6016



54.7937, 55.9576, 53.0884



50.3731, 55.9576, 56.4824



51.6101, 55.9576, 69.5044

Rectangle

The Rectangle color scheme consists of four colors that form a rectangle on the color wheel.



56.1018, 55.9576, 65.6016



56.3054, 55.9576, 57.6362



50.3731, 55.9576, 56.4824



50.1840, 55.9576, 64.3434

Sweetspot

The Sweet Spot groups the original color and five complimentary colors.



56.1034, 55.9600, 65.6028



93.2807, 96.7235, 107.5020



53.2224, 54.4326, 67.3767



19.9844, 20.7371, 23.0246



0.0000, 0.0000, 0.0000



20.3446, 21.4041, 23.3091

Same Dimension

The Same Dimension uses a secret algorithm to generate beautiful new colors.



56.1034, 55.9600, 65.6028



87.4302, 85.9292, 102.7570



55.2197, 55.6065, 60.9492



12.2052, 11.9668, 14.3565



20.5597, 10.0967, 23.6516



1.1760, 0.5751, 1.4614

Inverse Universe

The Inverse Universe completely reimagines the original color for something new.



56.1034, 55.9600, 65.6028



87.4302, 85.9292, 102.7570



55.3892, 60.7862, 65.6279



12.2052, 11.9668, 14.3565



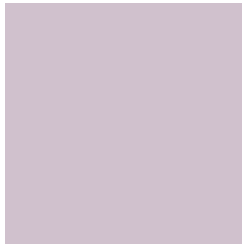
20.5597, 10.0967, 23.6516



1.1760, 0.5751, 1.4614

Previews

White Background



This preview shows how the XYZ color 56.1018, 55.9576, 65.6016 looks on a white background.

Color Contrast Check

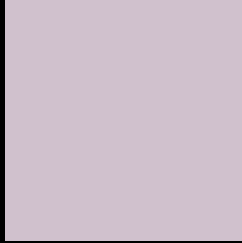
Large Text (above 18pt) WCAG AA × Fail

Any Text WCAG AA × Fail

Large Text (above 18pt) WCAG AAA × Fail

Any Text WCAG AAA × Fail

Black Background



This preview shows how the XYZ color 56.1018, 55.9576, 65.6016 looks on a black background.

Color Contrast Check

Large Text (above 18pt) WCAG AA ✓ Pass

Any Text WCAG AA ✓ Pass

Large Text (above 18pt) WCAG AAA ✓ Pass

Any Text WCAG AAA ✓ Pass

If you want to check with other color combinations, try the [Color Contrast Checker](#).

XYZ 56.1018, 55.9576, 65.6016

Background



This preview shows how black text looks on a background with the XYZ color 56.1018, 55.9576, 65.6016.



This preview shows how white text looks on a background with the XYZ color 56.1018, 55.9576,

Color Blindness Simulation

Color vision deficiency is a very complex topic, and I could not describe the different causes any better than Wikipedia does, so if you want to learn more, you should check out their [article about color blindness](#).

Dichromacy



Original Color

56.1018, 55.9576, 65.6016

Protanopia

54.2911, 55.9906, 66.9773

Deuteranopia

57.0908, 55.8155, 65.5221



Tritanopia

56.4676, 56.1039, 67.5275

Trichromacy



Original Color

56.1018, 55.9576, 65.6016

Protanomaly

55.0128, 56.0430, 66.3104

Deuteranomaly

56.7331, 55.9559, 65.5680

Tritanomaly

56.3449, 56.0548, 66.8815

Monochromacy



Original Color

56.1018, 55.9576, 65.6016

Achromatopsia

54.2854, 57.1125, 62.1955

Achromatomaly

54.8660, 56.7061, 63.3120

CSS Examples

Text

The CSS property to change the color of the text to XYZ 56.1018, 55.9576, 65.6016 is called "color". The color property can be set on classes, ids or directly on the HTML element.

This example shows how text in the color `rgb(208, 193, 205)` looks like.

```
.text, #text, p{  
    color:rgb(208, 193, 205)  
}
```

If you want to add a text shadow in that color use the text-shadow property, you can generate a text shadow directly with our [CSS Text Shadow Generator](#).

Here you see how black text with a 4 pixel rgb(208, 193, 205) colored shadow looks like.

```
.shadow{ text-shadow: 4px 4px 2px rgb(208, 193, 205) }
```

Border

The CSS property to change the border of an element to XYZ 56.1018, 55.9576, 65.6016 is called "border". The border property can be set on classes, ids or directly on the HTML element.

This example shows the color as border, it can be applied via the CSS property "border" or "border-color".

```
.border, #border, table{ border:4px solid rgb(208, 193, 205) }
```


If only the border color should be changed use the property `border-color`.

```
.border{ border-color:rgb(208, 193, 205) }
```

If you want to add a box shadow in that color use:

Here you see how a box with a 4 pixel `rgb(208, 193, 205)` colored shadow looks like.

```
.boxshadow{ -moz-box-shadow:4px 4px 4px  
4px rgb(208, 193, 205); -webkit-box-  
shadow:4px 4px 4px 4px rgb(208, 193, 205);  
box-shadow:4px 4px 4px 4px rgb(208, 193,  
205) }
```

Background

The CSS property to change the background color of an element to XYZ 56.1018, 55.9576, 65.6016 is called "background". The background property can be set on classes, ids or directly on the HTML element.

```
.background, #background, body{  
background: rgb(208, 193, 205) }
```

If only the background color should be changed can be used:

```
.background{ background-color: rgb(208,  
193, 205) }
```

This example shows the color as background, it is applied via the CSS property "background".

To optimize and compress your CSS code, you can use our [online CSS compressor and optimizer](#) based on csstidy. If you want to create a linear or radial gradient as background or border, check our [CSS Gradient Generator](#).

Hey! You found this booklet interesting? Support Converting Colors with the new Membership Option!

The pro membership hides all ads, plus gives you double the colors in the color bucket, and more awesome pro features!

[Learn more, Memberships starting at \\$2.50/m!](#)

**Follow me
on Twitter!**

@ConvertingColor