

Converting Colors

XYZ(56.1312, 53.3557, 53.7802)

Have a look what the booklet for
XYZ(56.1312, 53.3557, 53.7802)
contains.

XYZ(56.1276, 53.3557, 53.7948)	3
<i>Conversions</i>	4
<i>Details</i>	6
<i>Harmonies</i>	12
<i>Previews</i>	24
<i>Color Blindness Simulation</i>	28
<i>CSS Examples</i>	31

Color

**XYZ(56.1276, 53.3557,
53.7948)**

Conversions

Conversions Part 1

Format	Color
Hex	DEB8BA
RGB	222, 184, 186
RGB Percent	87%, 72%, 73%
CMY	0.1294, 0.2784, 0.2706
CMYK	0.00, 0.17, 0.16, 0.13
HSL	357°, 37%, 80%
HSV	357°, 17%, 87%
XYZ	56.1276, 53.3557, 53.7948
YIQ	195.5900, 22.0060, 8.6780

Conversions

Conversions Part 2

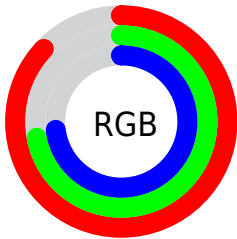
Format	Color
RYB	222, 184, 186
Decimal	14596282
CIELab	78.08, 13.95, 4.11
CIELCh	78, 14.540, 16.402
Yxy	53.3557, 0.3438, 0.3268
Android (android.graphics.Color)	4292786362 (0xFFDEB8BA)
YUV	195.5900, -4.7279, 23.1616
Hunter-Lab	73.0450, 9.3303, 7.4667

Details

The XYZ color **56.1276, 53.3557, 53.7948** is a light color, and the websafe version is hex **FFCCCC**. A complement of this color would be **58.8088, 67.6015, 77.6623**, and the grayscale version is **52.2432, 54.9639, 59.8557**.

A 20% lighter version of the original color is **88.4271, 89.9910, 96.7138**, and **28.0758, 26.0330, 25.7354** is the 20% darker color. If you saturate the color by 10%, you get **49.7990, 44.0172, 41.4533**, and if you desaturate by 10%, it is **63.5120, 64.2780, 68.1134**.

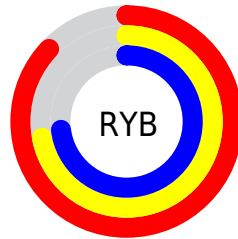
Distribution



Red (87%)

Green (72%)

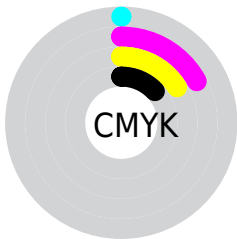
Blue (73%)



Red (87%)

Yellow (72%)

Blue (73%)

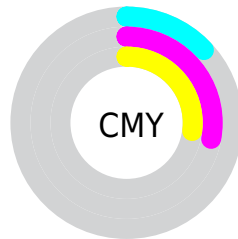


Cyan (0%)

Magenta (17%)

Yellow (16%)

Black (13%)



Cyan (13%)

Magenta (28%)

Yellow (27%)

Brightness & Saturation Gradients

These gradients show how the XYZ color 56.1276, 53.3557, 53.7948 changes by changing the brightness by 10 percent. The first figure shows a shift by +10% for each color and the second figure -10%.

Similar to the brightness gradients but the following saturation gradients show a change of the XYZ color 56.1276, 53.3557, 53.7948 by changing the saturation by 10% instead.

■ 56.1276, 53.3557,
53.7948

■ 56.1276, 53.3557,
53.7948

400.2394,
399.6483, 418.4795

■ 40.5426, 38.0868,
38.0456

■ 98.3298, 95.1276,
97.2263

■ 28.1480, 26.0501,
25.7160

125.6778,
122.3993, 125.7456

■ 18.5783, 16.8611,
16.3874

157.6776,
154.4408, 159.3586

■ 11.4681, 10.1355,
9.6414

194.6944,
191.6365, 198.4840

■ 6.4522, 5.4889,
5.0594

237.0936,
234.3707, 243.5403

■ 3.1652, 2.5369,
2.2228

285.2406,

■ 1.2417, 0.8950,

283.0278, 294.9459

0.6875

339.5008,
337.9922, 353.1195

■ 0.1389, 0.0000,
0.0000

■ 0.0000, 0.0000,
0.0000

■ 56.1276, 53.3557,
53.7948

■ 56.1276, 53.3557,
53.7948

■ 49.7990, 44.0172,
41.4533

■ 63.5120, 64.2780,
68.1134

■ 44.4739, 36.1823,
30.9988

■ 71.9927, 76.8451,
84.4872

■ 40.1019, 29.7744,
22.3395

■ 81.6134, 91.1238,
102.9938

■ 36.6268, 24.7078,
15.3742

■ 83.9344, 94.2697,
108.3798

■ 33.9862, 20.8870,
9.9919

■ 32.1100, 18.2045,
6.0685

■ 30.9165, 16.5341,
3.4610

■ 30.3009, 15.7115,
1.9964

■ 30.1887, 15.5554,
1.7485

Harmonies

Analogous

The Analogous color harmony consists of three colors that are next to each other on the color wheel.



56.2016, 53.3557, 61.8459



56.1276, 53.3557, 53.7948



54.5682, 53.3557, 47.5007

Triad

The Triadic color harmony groups three colors that are evenly spaced from another and form a triangle on the color wheel.



56.1276, 53.3557, 53.7948



46.8645, 53.3557, 47.9750



49.4414, 53.3557, 74.6401

Complementary

The Complementary color scheme is a pair of colors which are on the opposite of each other on the color wheel.



56.1276, 53.3557, 53.7948



58.8088, 67.6015, 77.6623

Split Complementary

Split-complementary colors differ from the complementary color scheme. The scheme consists of three colors, the original color and two neighbors of the complement color.



47.0438, 53.3557, 70.1586



56.1276, 53.3557, 53.7948



45.5939, 53.3557, 54.4995

Square

The Square scheme is like the rectangle color scheme, but the four colors are evenly spaced on the color wheel.



56.1276, 53.3557, 53.7948



49.1883, 53.3557, 44.3612



45.6583, 53.3557, 62.6191



52.2689, 53.3557, 74.4065

Rectangle

The Rectangle color scheme consists of four colors that form a rectangle on the color wheel.



56.1276, 53.3557, 53.7948



52.9280, 53.3557, 44.9237



45.6583, 53.3557, 62.6191



48.5607, 53.3557, 73.6185

Sweetspot

The Sweet Spot groups the original color and five complimentary colors.



56.1291, 53.3581, 53.7959



89.2321, 91.3794, 97.6655



59.6808, 54.6899, 76.5184



18.9310, 19.3096, 20.5789



0.0000, 0.0000, 0.0000



20.3446, 21.4041, 23.3091

Same Dimension

The Same Dimension uses a secret algorithm to generate beautiful new colors.



56.1291, 53.3581, 53.7959



73.1624, 67.6157, 66.4874



59.5400, 60.5172, 53.8932



13.7363, 13.7121, 14.3814



17.9438, 9.2445, 1.1041



1.2542, 0.6450, 0.1315

Inverse Universe

The Inverse Universe completely reimagines the original color for something new.



56.1291, 53.3581, 53.7959



73.1624, 67.6157, 66.4874



54.9131, 59.3845, 77.6759



13.7363, 13.7121, 14.3814



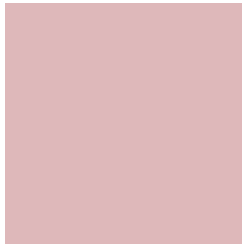
17.9438, 9.2445, 1.1041



1.2542, 0.6450, 0.1315

Previews

White Background



This preview shows how the XYZ color 56.1276, 53.3557, 53.7948 looks on a white background.

Color Contrast Check

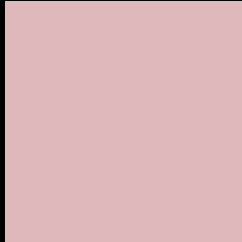
Large Text (above 18pt) WCAG AA × Fail

Any Text WCAG AA × Fail

Large Text (above 18pt) WCAG AAA × Fail

Any Text WCAG AAA × Fail

Black Background



This preview shows how the XYZ color 56.1276, 53.3557, 53.7948 looks on a black background.

Color Contrast Check

Large Text (above 18pt) WCAG AA ✓ Pass

Any Text WCAG AA ✓ Pass

Large Text (above 18pt) WCAG AAA ✓ Pass

Any Text WCAG AAA ✓ Pass

If you want to check with other color combinations, try the [Color Contrast Checker](#).

XYZ 56.1276, 53.3557, 53.7948

Background



This preview shows how black text looks on a background with the XYZ color 56.1276, 53.3557, 53.7948.



This preview shows how white text looks on a background with the XYZ color 56.1276, 53.3557,

53.7948.

Color Blindness Simulation

Color vision deficiency is a very complex topic, and I could not describe the different causes any better than Wikipedia does, so if you want to learn more, you should check out their [article about color blindness](#).

Dichromacy



Original Color

56.1276, 53.3557, 53.7948

Protanopia

51.2796, 53.3312, 56.8814

Deuteranopia

54.5516, 53.4905, 53.3485



Tritanopia

57.2374, 53.1751, 60.0704

Trichromacy



Original Color

56.1276, 53.3557, 53.7948

Protanomaly

52.8365, 53.1911, 55.6262

Deuteranomaly

55.2293, 53.5260, 53.3196

Tritanomaly

56.9906, 53.4052, 57.7566

Monochromacy



Original Color

56.1276, 53.3557, 53.7948

Achromatopsia

52.4687, 55.2011, 60.1140

Achromatomaly

53.5409, 54.4842, 57.5638

CSS Examples

Text

The CSS property to change the color of the text to XYZ 56.1276, 53.3557, 53.7948 is called "color". The color property can be set on classes, ids or directly on the HTML element.

This example shows how text in the color `rgb(222, 184, 186)` looks like.

```
.text, #text, p{  
    color:rgb(222, 184, 186)  
}
```

If you want to add a text shadow in that color use the text-shadow property, you can generate a text shadow directly with our [CSS Text Shadow Generator](#).

Here you see how black text with a 4 pixel rgb(222, 184, 186) colored shadow looks like.

```
.shadow{ text-shadow: 4px 4px 2px rgb(222, 184, 186) }
```

Border

The CSS property to change the border of an element to XYZ 56.1276, 53.3557, 53.7948 is called "border". The border property can be set on classes, ids or directly on the HTML element.

This example shows the color as border, it can be applied via the CSS property "border" or "border-color".

```
.border, #border, table{ border:4px solid rgb(222, 184, 186) }
```


If only the border color should be changed use the property `border-color`.

```
.border{ border-color:rgb(222, 184, 186) }
```

If you want to add a box shadow in that color use:

Here you see how a box with a 4 pixel `rgb(222, 184, 186)` colored shadow looks like.

```
.boxshadow{ -moz-box-shadow:4px 4px 4px  
4px rgb(222, 184, 186); -webkit-box-  
shadow:4px 4px 4px 4px rgb(222, 184, 186);  
box-shadow:4px 4px 4px 4px rgb(222, 184,  
186) }
```

Background

The CSS property to change the background color of an element to XYZ 56.1276, 53.3557, 53.7948 is called "background". The background property can be set on classes, ids or directly on the HTML element.

```
.background, #background, body{  
background: rgb(222, 184, 186) }
```

If only the background color should be changed can be used:

```
.background{ background-color: rgb(222,  
184, 186) }
```

This example shows the color as background, it is applied via the CSS property "background".

To optimize and compress your CSS code, you can use our [online CSS compressor and optimizer](#) based on csstidy. If you want to create a linear or radial gradient as background or border, check our [CSS Gradient Generator](#).

Hey! You found this booklet interesting? Support Converting Colors with the new Membership Option!

The pro membership hides all ads, plus gives you double the colors in the color bucket, and more awesome pro features!

[Learn more, Memberships starting at \\$2.50/m!](#)

**Follow me
on Twitter!**

@ConvertingColor