

Converting Colors

XYZ(56.1915, 56.0591, 44.9164)

Have a look what the booklet for
XYZ(56.1915, 56.0591, 44.9164)
contains.

XYZ(56.3489, 56.2144, 44.9263)	3
<i>Conversions</i>	4
<i>Details</i>	6
<i>Harmonies</i>	12
<i>Previews</i>	24
<i>Color Blindness Simulation</i>	28
<i>CSS Examples</i>	31

Color

**XYZ(56.3489, 56.2144,
44.9263)**

Conversions

Conversions Part 1

Format	Color
Hex	DFC0A8
RGB	223, 192, 168
RGB Percent	87%, 75%, 66%
CMY	0.1255, 0.2470, 0.3412
CMYK	0.00, 0.14, 0.25, 0.13
HSL	26°, 46%, 77%
HSV	26°, 25%, 87%
XYZ	56.3489, 56.2144, 44.9263
YIQ	198.5330, 26.1800, -0.8920

Conversions

Conversions Part 2

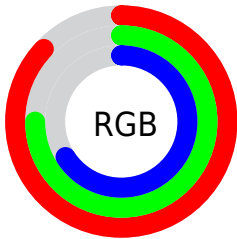
Format	Color
R _Y B	223, 211, 168
Decimal	14663848
CIE Lab	79.74, 7.38, 16.17
CIE LCh	80, 17.773, 65.461
Yxy	56.2144, 0.3578, 0.3569
Android (android.graphics.Color)	4292853928 (0xFFDFC0A8)
YUV	198.5330, -15.0528, 21.4576
Hunter-Lab	74.9763, 2.9444, 16.9564

Details

The XYZ color **56.3489, 56.2144, 44.9263** is a light color, and the websafe version is hex **FFCCCC**. A complement of this color would be **49.8906, 54.4978, 77.7018**, and the grayscale version is **54.0799, 56.8962, 61.9600**.

A 20% lighter version of the original color is **88.1267, 93.7225, 83.2575**, and **28.3214, 27.9417, 20.4236** is the 20% darker color. If you saturate the color by 10%, you get **51.8047, 50.1703, 34.0259**, and if you desaturate by 10%, it is **61.4880, 62.8775, 57.7839**.

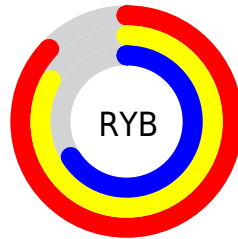
Distribution



Red (87%)

Green (75%)

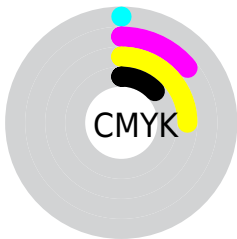
Blue (66%)



Red (87%)

Yellow (83%)

Blue (66%)

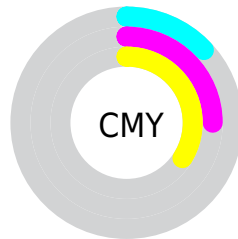


Cyan (0%)

Magenta (14%)

Yellow (25%)

Black (13%)



Cyan (13%)

Magenta (25%)

Yellow (34%)

Brightness & Saturation Gradients

These gradients show how the XYZ color 56.3489, 56.2144, 44.9263 changes by changing the brightness by 10 percent. The first figure shows a shift by +10% for each color and the second figure -10%.

Similar to the brightness gradients but the following saturation gradients show a change of the XYZ color 56.3489, 56.2144, 44.9263 by changing the saturation by 10% instead.

56.3489, 56.2144,
44.9263

56.3489, 56.2144,
44.9263

401.0588,
410.4990, 382.6264

40.7208, 40.3748,
31.0569

98.6514, 99.3180,
83.9271

28.2877, 27.8309,
20.3833

126.0565,
127.3508, 109.8955

18.6842, 18.1982,
12.4871

158.1180,
160.2168, 140.7340

11.5450, 11.0924,
6.9498

195.2012,
198.3005, 176.8611

6.5046, 6.1290,
3.3528

237.6716,
241.9861, 218.6953

3.1978, 2.9237,
1.2775

285.8944,

1.2592, 1.0920,

291.6581, 266.6553

0.0432

340.2350,
347.7010, 321.1595

■ 0.1524, 0.0000,
0.0000

■ 0.0000, 0.0000,
0.0000

■ 56.3489, 56.2144,
44.9263

■ 56.3489, 56.2144,
44.9263

■ 51.8047, 50.1703,
34.0259

■ 61.4880, 62.8775,
57.7839

■ 47.8270, 44.7184,
24.9817

■ 67.2402, 70.1698,
72.6861

■ 44.3913, 39.8413,
17.6884

■ 73.6281, 78.1113,
89.7191

■ 41.4694, 35.5174,
12.0292

■ 80.3154, 86.5758,
107.0855

■ 39.0303, 31.7237,
7.8722

■ 84.1910, 94.3270,
108.3773

■ 37.0382, 28.4348,
5.0650

■ 84.2415, 94.4280,
108.3942

■ 35.4511, 25.6220,
3.4217

■ 34.7366, 24.2982,
2.8592

Harmonies

Analogous

The Analogous color harmony consists of three colors that are next to each other on the color wheel.



59.2528, 56.2144, 50.4391



56.3489, 56.2144, 44.9263



52.7758, 56.2144, 43.5603

Triad

The Triadic color harmony groups three colors that are evenly spaced from another and form a triangle on the color wheel.



56.3489, 56.2144, 44.9263



46.8482, 56.2144, 63.1088



57.5362, 56.2144, 78.7658

Complementary

The Complementary color scheme is a pair of colors which are on the opposite of each other on the color wheel.



56.3489, 56.2144, 44.9263



49.8906, 54.4978, 77.7018

Split Complementary

Split-complementary colors differ from the complementary color scheme. The scheme consists of three colors, the original color and two neighbors of the complement color.



54.0898, 56.2144, 83.0748



56.3489, 56.2144, 44.9263



48.0019, 56.2144, 73.4098

Square

The Square scheme is like the rectangle color scheme, but the four colors are evenly spaced on the color wheel.



56.3489, 56.2144, 44.9263



47.3928, 56.2144, 53.3582



50.6139, 56.2144, 81.0129



59.9595, 56.2144, 69.7921

Rectangle

The Rectangle color scheme consists of four colors that form a rectangle on the color wheel.



56.3489, 56.2144, 44.9263



50.5169, 56.2144, 45.0358



50.6139, 56.2144, 81.0129



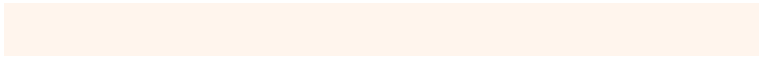
56.4532, 56.2144, 80.8510

Sweetspot

The Sweet Spot groups the original color and five complimentary colors.



56.3504, 56.2170, 44.9275



89.1824, 92.6521, 93.4189



54.7627, 47.8251, 60.4797



18.9847, 19.7001, 19.7242



0.0000, 0.0000, 0.0000



20.3446, 21.4041, 23.3091

Same Dimension

The Same Dimension uses a secret algorithm to generate beautiful new colors.



56.3504, 56.2170, 44.9275



72.8418, 71.5256, 52.3498



62.9182, 69.3525, 47.1167



14.1969, 14.6798, 14.3920



20.5326, 14.5031, 1.7172



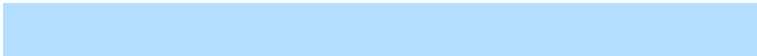
1.5111, 1.1811, 0.1483

Inverse Universe

The Inverse Universe completely reimagines the original color for something new.



49.8906, 54.4978, 77.7018



62.5433, 68.7807, 104.5874



44.1575, 43.0316, 75.7908



13.5897, 14.5186, 17.4738



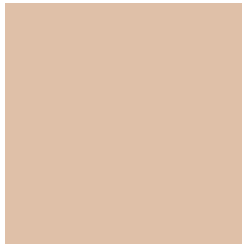
12.3082, 12.0860, 42.7325



0.9418, 1.0150, 2.9915

Previews

White Background



This preview shows how the XYZ color 56.3489, 56.2144, 44.9263 looks on a white background.

Color Contrast Check

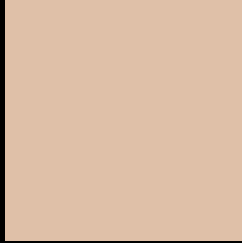
Large Text (above 18pt) WCAG AA × Fail

Any Text WCAG AA × Fail

Large Text (above 18pt) WCAG AAA × Fail

Any Text WCAG AAA × Fail

Black Background



This preview shows how the XYZ color 56.3489, 56.2144, 44.9263 looks on a black background.

Color Contrast Check

Large Text (above 18pt) WCAG AA ✓ Pass

Any Text WCAG AA ✓ Pass

Large Text (above 18pt) WCAG AAA ✓ Pass

Any Text WCAG AAA ✓ Pass

If you want to check with other color combinations, try the [Color Contrast Checker](#).

XYZ 56.3489, 56.2144, 44.9263

Background



This preview shows how black text looks on a background with the XYZ color 56.3489, 56.2144, 44.9263.



This preview shows how white text looks on a background with the XYZ color 56.3489, 56.2144,

Color Blindness Simulation

Color vision deficiency is a very complex topic, and I could not describe the different causes any better than Wikipedia does, so if you want to learn more, you should check out their [article about color blindness](#).

Dichromacy



Original Color

56.3489, 56.2144, 44.9263

Protanopia

53.3294, 56.2827, 46.5810

Deuteranopia

57.1599, 55.9850, 44.8393



Tritanopia

60.1095, 56.1358, 63.5443

Trichromacy



Original Color

56.3489, 56.2144, 44.9263

Protanomaly

54.2114, 56.0786, 45.9972

Deuteranomaly

57.0627, 56.2575, 44.8970

Tritanomaly

58.8559, 56.2816, 56.4766

Monochromacy



Original Color

56.3489, 56.2144, 44.9263

Achromatopsia

54.2854, 57.1125, 62.1955

Achromatomaly

54.8295, 56.5206, 55.5967

CSS Examples

Text

The CSS property to change the color of the text to XYZ 56.3489, 56.2144, 44.9263 is called "color". The color property can be set on classes, ids or directly on the HTML element.

This example shows how text in the color `rgb(223, 192, 168)` looks like.

```
.text, #text, p{  
    color:rgb(223, 192, 168)  
}
```

If you want to add a text shadow in that color use the text-shadow property, you can generate a text shadow directly with our [CSS Text Shadow Generator](#).

Here you see how black text with a 4 pixel rgb(223, 192, 168) colored shadow looks like.

```
.shadow{ text-shadow: 4px 4px 2px rgb(223, 192, 168) }
```

Border

The CSS property to change the border of an element to XYZ 56.3489, 56.2144, 44.9263 is called "border". The border property can be set on classes, ids or directly on the HTML element.

This example shows the color as border, it can be applied via the CSS property "border" or "border-color".

```
.border, #border, table{ border:4px solid rgb(223, 192, 168) }
```


If only the border color should be changed use the property `border-color`.

```
.border{ border-color:rgb(223, 192, 168) }
```

If you want to add a box shadow in that color use:

Here you see how a box with a 4 pixel `rgb(223, 192, 168)` colored shadow looks like.

```
.boxshadow{ -moz-box-shadow:4px 4px 4px  
4px rgb(223, 192, 168); -webkit-box-  
shadow:4px 4px 4px 4px rgb(223, 192, 168);  
box-shadow:4px 4px 4px 4px rgb(223, 192,  
168) }
```

Background

The CSS property to change the background color of an element to XYZ 56.3489, 56.2144, 44.9263 is called "background". The background property can be set on classes, ids or directly on the HTML element.

```
.background, #background, body{  
background: rgb(223, 192, 168) }
```

If only the background color should be changed can be used:

```
.background{ background-color: rgb(223,  
192, 168) }
```

This example shows the color as background, it is applied via the CSS property "background".

To optimize and compress your CSS code, you can use our [online CSS compressor and optimizer](#) based on csstidy. If you want to create a linear or radial gradient as background or border, check our [CSS Gradient Generator](#).

Hey! You found this booklet interesting? Support Converting Colors with the new Membership Option!

The pro membership hides all ads, plus gives you double the colors in the color bucket, and more awesome pro features!

[Learn more, Memberships starting at \\$2.50/m!](#)

**Follow me
on Twitter!**

@ConvertingColor