

Converting Colors

XYZ(56.2105, 56.0946, 58.3306)

Have a look what the booklet for
XYZ(56.2105, 56.0946, 58.3306)
contains.

XYZ(56.1362, 56.1363, 58.3288)	3
<i>Conversions</i>	4
<i>Details</i>	6
<i>Harmonies</i>	12
<i>Previews</i>	24
<i>Color Blindness Simulation</i>	28
<i>CSS Examples</i>	31

Color

**XYZ(56.1362, 56.1363,
58.3288)**

Conversions

Conversions Part 1

Format	Color
Hex	D5C1C1
RGB	213, 193, 193
RGB Percent	84%, 76%, 76%
CMY	0.1647, 0.2431, 0.2431
CMYK	0.00, 0.09, 0.09, 0.16
HSL	0°, 19%, 80%
HSV	0°, 9%, 84%
XYZ	56.1362, 56.1363, 58.3288
YIQ	198.9800, 11.9200, 4.2400

Conversions

Conversions Part 2

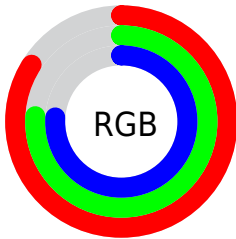
Format	Color
R _Y B	213, 193, 193
Decimal	14008769
CIE Lab	79.69, 7.04, 2.55
CIE LCh	80, 7.492, 19.926
Yxy	56.1363, 0.3290, 0.3290
Android (android.graphics.Color)	4292198849 (0xFFD5C1C1)
YUV	198.9800, -2.9481, 12.2955
Hunter-Lab	74.9242, 2.6221, 6.2894

Details

The XYZ color **56.1362, 56.1363, 58.3288** is a light color, and the websafe version is hex **CCCCCC**. A complement of this color would be **57.7967, 63.7290, 72.2063**, and the grayscale version is **54.2875, 57.1147, 62.1979**.

A 20% lighter version of the original color is **92.2146, 95.8509, 103.2634**, and **28.0668, 27.6278, 28.6644** is the 20% darker color. If you saturate the color by 10%, you get **49.5558, 46.5077, 45.2445**, and if you desaturate by 10%, it is **63.7399, 67.2626, 73.4439**.

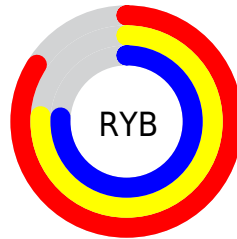
Distribution



Red (84%)

Green (76%)

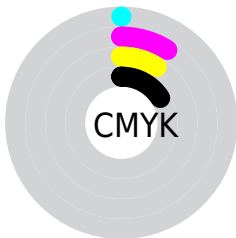
Blue (76%)



Red (84%)

Yellow (76%)

Blue (76%)

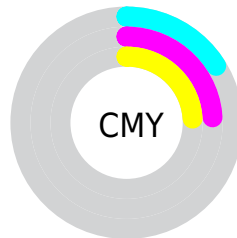


Cyan (0%)

Magenta (9%)

Yellow (9%)

Black (16%)



Cyan (16%)

Magenta (24%)

Yellow (24%)

Brightness & Saturation Gradients

These gradients show how the XYZ color 56.1362, 56.1363, 58.3288 changes by changing the brightness by 10 percent. The first figure shows a shift by +10% for each color and the second figure -10%.

Similar to the brightness gradients but the following saturation gradients show a change of the XYZ color 56.1362, 56.1363, 58.3288 by changing the saturation by 10% instead.

■ 56.1362, 56.1363,
58.3288

■ 56.1362, 56.1363,
58.3288

400.2713,
410.2050, 436.0424

■ 40.5496, 40.3122,
41.6566

■ 98.3423, 99.2038,
103.9210

■ 28.1534, 27.7821,
28.5089

125.6926,
127.2161, 133.6781

■ 18.5824, 18.1614,
18.4673

157.6947,
160.0598, 168.6339

■ 11.4711, 11.0660,
11.1131

194.7141,
198.1195, 209.2070

■ 6.4543, 6.1112,
6.0278

237.1161,
241.7794, 255.8158

■ 3.1665, 2.9128,
2.7929

285.2660,

■ 1.2424, 1.0864,

291.4240, 308.8789

0.9899

339.5293,
347.4378, 368.8150

■ 0.1395, 0.0000,
0.0000

■ 0.0000, 0.0000,
0.0000

■ 56.1362, 56.1363,
58.3288

■ 56.1362, 56.1363,
58.3288

■ 49.5558, 46.5077,
45.2445

■ 63.7399, 67.2626,
73.4439

■ 43.9506, 38.3058,
34.1012

■ 72.4031, 79.9387,
90.6674

■ 39.2756, 31.4651,
24.8075

■ 81.2509, 92.8863,
108.2542

■ 35.4807, 25.9120,
17.2634

■ 32.5106, 21.5658,
11.3594

■ 30.3042, 18.3370,
6.9738

■ 28.7918, 16.1236,
3.9678

■ 27.8908, 14.8050,
2.1774

■ 27.4625, 14.1782,
1.3266

Harmonies

Analogous

The Analogous color harmony consists of three colors that are next to each other on the color wheel.



56.2700, 56.1363, 62.5910



56.1362, 56.1363, 58.3288



55.2496, 56.1363, 54.9700

Triad

The Triadic color harmony groups three colors that are evenly spaced from another and form a triangle on the color wheel.



56.1362, 56.1363, 58.3288



51.1618, 56.1363, 55.9175



52.8489, 56.1363, 69.6932

Complementary

The Complementary color scheme is a pair of colors which are on the opposite of each other on the color wheel.



56.1362, 56.1363, 58.3288



57.7967, 63.7290, 72.2063

Split Complementary

Split-complementary colors differ from the complementary color scheme. The scheme consists of three colors, the original color and two neighbors of the complement color.



51.5059, 56.1363, 67.7186



56.1362, 56.1363, 58.3288



50.5441, 56.1363, 59.6779

Square

The Square scheme is like the rectangle color scheme, but the four colors are evenly spaced on the color wheel.



56.1362, 56.1363, 58.3288



52.3711, 56.1363, 53.6241



50.6689, 56.1363, 64.0048



54.3529, 56.1363, 69.2901

Rectangle

The Rectangle color scheme consists of four colors that form a rectangle on the color wheel.



56.1362, 56.1363, 58.3288



54.3600, 56.1363, 53.6309



50.6689, 56.1363, 64.0048



52.3641, 56.1363, 69.2821

Sweetspot

The Sweet Spot groups the original color and five complimentary colors.



56.1378, 56.1388, 58.3300



91.4509, 94.7337, 101.7446



58.5216, 57.0910, 70.8868



19.3736, 19.9833, 21.3786



0.0000, 0.0000, 0.0000



20.3446, 21.4041, 23.3091

Same Dimension

The Same Dimension uses a secret algorithm to generate beautiful new colors.



56.1378, 56.1388, 58.3300



82.5550, 81.7169, 84.0587



58.4229, 60.7091, 59.0917



12.4235, 12.4212, 12.9034



16.7623, 8.6418, 0.7846



1.0111, 0.5214, 0.0473

Inverse Universe

The Inverse Universe completely reimagines the original color for something new.



57.7967, 63.7290, 72.2063



85.4712, 95.0595, 108.4513



55.3593, 58.8543, 71.3938



12.7920, 14.1075, 15.9863



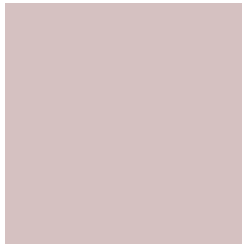
21.8652, 31.9921, 43.4758



1.3189, 1.9297, 2.6223

Previews

White Background



This preview shows how the XYZ color 56.1362, 56.1363, 58.3288 looks on a white background.

Color Contrast Check

Large Text (above 18pt) WCAG AA × Fail

Any Text WCAG AA × Fail

Large Text (above 18pt) WCAG AAA × Fail

Any Text WCAG AAA × Fail

Black Background



This preview shows how the XYZ color 56.1362, 56.1363, 58.3288 looks on a black background.

Color Contrast Check

Large Text (above 18pt) WCAG AA ✓ Pass

Any Text WCAG AA ✓ Pass

Large Text (above 18pt) WCAG AAA ✓ Pass

Any Text WCAG AAA ✓ Pass

If you want to check with other color combinations, try the [Color Contrast Checker](#).

XYZ 56.1362, 56.1363, 58.3288

Background



This preview shows how black text looks on a background with the XYZ color 56.1362, 56.1363, 58.3288.



This preview shows how white text looks on a background with the XYZ color 56.1362, 56.1363, 58.3288.

Color Blindness Simulation

Color vision deficiency is a very complex topic, and I could not describe the different causes any better than Wikipedia does, so if you want to learn more, you should check out their [article about color blindness](#).

Dichromacy



Original Color

56.1362, 56.1363, 58.3288

Protanopia

54.1737, 56.4292, 59.6664

Deuteranopia

57.1699, 56.0173, 58.2513



Tritanopia

57.7957, 56.1649, 66.1873

Trichromacy



Original Color

56.1362, 56.1363, 58.3288

Protanomaly

54.9311, 56.4967, 59.0487

Deuteranomaly

56.7942, 56.1485, 58.2964

Tritanomaly

57.1238, 56.2125, 63.0977

Monochromacy



Original Color

56.1362, 56.1363, 58.3288

Achromatopsia

54.2854, 57.1125, 62.1955

Achromatomaly

54.9461, 56.8011, 60.8911

CSS Examples

Text

The CSS property to change the color of the text to XYZ 56.1362, 56.1363, 58.3288 is called "color". The color property can be set on classes, ids or directly on the HTML element.

This example shows how text in the color `rgb(213, 193, 193)` looks like.

```
.text, #text, p{  
    color:rgb(213, 193, 193)  
}
```

If you want to add a text shadow in that color use the text-shadow property, you can generate a text shadow directly with our [CSS Text Shadow Generator](#).

Here you see how black text with a 4 pixel rgb(213, 193, 193) colored shadow looks like.

```
.shadow{ text-shadow: 4px 4px 2px rgb(213, 193, 193) }
```

Border

The CSS property to change the border of an element to XYZ 56.1362, 56.1363, 58.3288 is called "border". The border property can be set on classes, ids or directly on the HTML element.

This example shows the color as border, it can be applied via the CSS property "border" or "border-color".

```
.border, #border, table{ border:4px solid rgb(213, 193, 193) }
```


If only the border color should be changed use the property `border-color`.

```
.border{ border-color:rgb(213, 193, 193) }
```

If you want to add a box shadow in that color use:

Here you see how a box with a 4 pixel `rgb(213, 193, 193)` colored shadow looks like.

```
.boxshadow{ -moz-box-shadow:4px 4px 4px  
4px rgb(213, 193, 193); -webkit-box-  
shadow:4px 4px 4px 4px rgb(213, 193, 193);  
box-shadow:4px 4px 4px 4px rgb(213, 193,  
193) }
```

Background

The CSS property to change the background color of an element to XYZ 56.1362, 56.1363, 58.3288 is called "background". The background property can be set on classes, ids or directly on the HTML element.

```
.background, #background, body{  
background: rgb(213, 193, 193) }
```

If only the background color should be changed can be used:

```
.background{ background-color: rgb(213,  
193, 193) }
```

This example shows the color as background, it is applied via the CSS property "background".

To optimize and compress your CSS code, you can use our [online CSS compressor and optimizer](#) based on csstidy. If you want to create a linear or radial gradient as background or border, check our [CSS Gradient Generator](#).

Hey! You found this booklet interesting? Support Converting Colors with the new Membership Option!

The pro membership hides all ads, plus gives you double the colors in the color bucket, and more awesome pro features!

[Learn more, Memberships starting at \\$2.50/m!](#)

**Follow me
on Twitter!**

@ConvertingColor