

Converting Colors

XYZ(56.2507, 43.6418, 40.5647)

Have a look what the booklet for
XYZ(56.2507, 43.6418, 40.5647)
contains.

XYZ(56.2015, 43.6875, 40.5923)	3
<i>Conversions</i>	4
<i>Details</i>	6
<i>Harmonies</i>	12
<i>Previews</i>	24
<i>Color Blindness Simulation</i>	28
<i>CSS Examples</i>	31

Color

**XYZ(56.2015, 43.6875,
40.5923)**

Conversions

Conversions Part 1

Format	Color
Hex	F993A4
RGB	249, 147, 164
RGB Percent	98%, 58%, 64%
CMY	0.0235, 0.4235, 0.3569
CMYK	0.00, 0.41, 0.34, 0.02
HSL	350°, 89%, 78%
HSV	350°, 41%, 98%
XYZ	56.2015, 43.6875, 40.5923
YIQ	179.4360, 55.3350, 26.9110

Conversions

Conversions Part 2

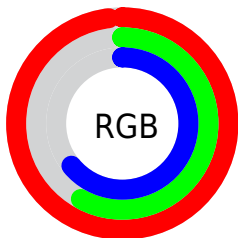
Format	Color
R _Y B	249, 147, 164
Decimal	16356260
CIE Lab	72.02, 40.28, 7.81
CIE LCh	72, 41.027, 10.980
Yxy	43.6875, 0.4001, 0.3110
Android (android.graphics.Color)	4294546340 (0xFFFF993A4)
YUV	179.4360, -7.6099, 61.0076
Hunter-Lab	66.0965, 36.1086, 9.8554

Details

The XYZ color **56.2015, 43.6875, 40.5923** is a light color, and the websafe version is hex **FF9999**. A complement of this color would be **60.4759, 79.7817, 88.5603**, and the grayscale version is **43.1002, 45.3448, 49.3804**.

A 20% lighter version of the original color is **75.1467, 68.6155, 76.3013**, and **28.1625, 20.1224, 17.7289** is the 20% darker color. If you saturate the color by 10%, you get **51.0165, 36.0758, 30.3604**, and if you desaturate by 10%, it is **62.5326, 53.1016, 52.7157**.

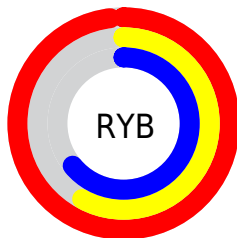
Distribution



Red (98%)

Green (58%)

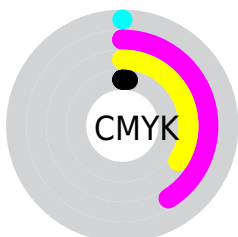
Blue (64%)



Red (98%)

Yellow (58%)

Blue (64%)

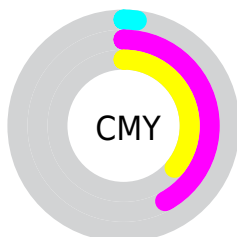


Cyan (0%)

Magenta (41%)

Yellow (34%)

Black (2%)



Cyan (2%)

Magenta (42%)

Yellow (36%)

Brightness & Saturation Gradients

These gradients show how the XYZ color 56.2015, 43.6875, 40.5923 changes by changing the brightness by 10 percent. The first figure shows a shift by +10% for each color and the second figure -10%.

Similar to the brightness gradients but the following saturation gradients show a change of the XYZ color 56.2015, 43.6875, 40.5923 by changing the saturation by 10% instead.

56.2015, 43.6875,
40.5923

56.2015, 43.6875,
40.5923

400.5132,
361.4315, 364.2398

40.6021, 30.4249,
27.6834

98.4372, 80.7473,
77.3115

28.1946, 20.1613,
17.8501

125.8043,
105.3133, 101.9589

18.6136, 12.5124,
10.6741

157.8247,
134.4159, 131.3562

11.4938, 7.0936,
5.7368

194.8637,
168.4395, 165.9219

6.4697, 3.5207,
2.6195

237.2867,
207.7684, 206.0745

3.1761, 1.4093,
0.9025

285.4590,

1.2476, 0.2235,

252.7872, 252.2327

0.0000

339.7460,
303.8801, 304.8150

■ 0.1434, 0.0000,
0.0000

■ 0.0000, 0.0000,
0.0000

■ 56.2015, 43.6875,
40.5923

■ 56.2015, 43.6875,
40.5923

■ 51.0165, 36.0758,
30.3604

■ 62.5326, 53.1016,
52.7157

■ 46.9046, 30.1449,
21.9212

■ 70.0697, 64.4167,
66.8172

■ 43.7900, 25.7686,
15.1706

■ 78.8729, 77.7316,
82.9813

■ 41.5849, 22.7995,
9.9928

■ 88.9970, 93.1368,
101.2867

■ 40.1858, 21.0620,
6.2564

■ 92.8770, 98.8798,
108.7983

■ 39.4758, 20.3033,
3.9811

Harmonies

Analogous

The Analogous color harmony consists of three colors that are next to each other on the color wheel.



55.6054, 43.6875, 61.2819



56.2015, 43.6875, 40.5923



52.5462, 43.6875, 26.4886

Triad

The Triadic color harmony groups three colors that are evenly spaced from another and form a triangle on the color wheel.



56.2015, 43.6875, 40.5923



33.3013, 43.6875, 23.9828



37.2863, 43.6875, 94.1577

Complementary

The Complementary color scheme is a pair of colors which are on the opposite of each other on the color wheel.



56.2015, 43.6875, 40.5923



60.4759, 79.7817, 88.5603

Split Complementary

Split-complementary colors differ from the complementary color scheme. The scheme consists of three colors, the original color and two neighbors of the complement color.



32.1616, 43.6875, 77.6188



56.2015, 43.6875, 40.5923



30.0459, 43.6875, 36.0702

Square

The Square scheme is like the rectangle color scheme, but the four colors are evenly spaced on the color wheel.



56.2015, 43.6875, 40.5923



39.0105, 43.6875, 18.8571



29.6536, 43.6875, 55.3009



44.1425, 43.6875, 96.3823

Rectangle

The Rectangle color scheme consists of four colors that form a rectangle on the color wheel.



56.2015, 43.6875, 40.5923



48.4075, 43.6875, 21.1793



29.6536, 43.6875, 55.3009



35.3255, 43.6875, 89.9077

Sweetspot

The Sweet Spot groups the original color and five complimentary colors.



56.2027, 43.6897, 40.5931



82.2159, 80.4716, 85.6936



60.8128, 44.8651, 95.0773



17.3248, 16.8108, 17.8438



0.0000, 0.0000, 0.0000



20.3446, 21.4041, 23.3091

Same Dimension

The Same Dimension uses a secret algorithm to generate beautiful new colors.



56.2027, 43.6897, 40.5931



54.8046, 39.4687, 33.9522



60.8588, 55.2961, 35.0721



17.3626, 17.2724, 18.4991



21.1651, 10.8818, 2.3119



1.9927, 1.0208, 0.3848

Inverse Universe

The Inverse Universe completely reimagines the original color for something new.



56.2027, 43.6897, 40.5931



54.8046, 39.4687, 33.9522



53.4338, 61.6453, 98.7052



17.3626, 17.2724, 18.4991



21.1651, 10.8818, 2.3119



1.9927, 1.0208, 0.3848

Previews

White Background



This preview shows how the XYZ color 56.2015, 43.6875, 40.5923 looks on a white background.

Color Contrast Check

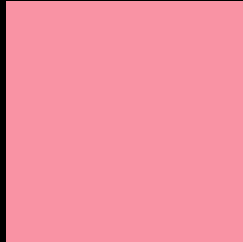
Large Text (above 18pt) WCAG AA × Fail

Any Text WCAG AA × Fail

Large Text (above 18pt) WCAG AAA × Fail

Any Text WCAG AAA × Fail

Black Background



This preview shows how the XYZ color 56.2015, 43.6875, 40.5923 looks on a black background.

Color Contrast Check

Large Text (above 18pt) WCAG AA ✓ Pass

Any Text WCAG AA ✓ Pass

Large Text (above 18pt) WCAG AAA ✓ Pass

Any Text WCAG AAA ✓ Pass

If you want to check with other color combinations, try the [Color Contrast Checker](#).

XYZ 56.2015, 43.6875, 40.5923

Background



This preview shows how black text looks on a background with the XYZ color 56.2015, 43.6875, 40.5923.



This preview shows how white text looks on a background with the XYZ color 56.2015, 43.6875,

40.5923.

Color Blindness Simulation

Color vision deficiency is a very complex topic, and I could not describe the different causes any better than Wikipedia does, so if you want to learn more, you should check out their [article about color blindness](#).

Dichromacy



Original Color

56.2015, 43.6875, 40.5923

Protanopia

42.3540, 43.9297, 49.4270

Deuteranopia

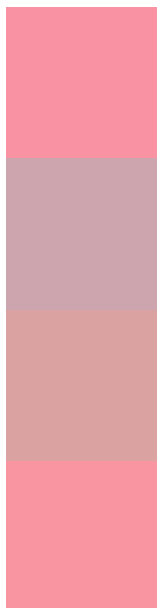
44.7275, 43.9432, 39.3822



Tritanopia

55.9148, 43.8227, 38.3125

Trichromacy



Original Color

56.2015, 43.6875, 40.5923

Protanomaly

45.9970, 42.8036, 45.8820

Deuteranomaly

48.2668, 43.3193, 39.5357

Tritanomaly

56.0898, 43.8928, 39.2341

Monochromacy



Original Color

56.2015, 43.6875, 40.5923

Achromatopsia

42.8472, 45.0786, 49.0906

Achromatomaly

46.3605, 43.5308, 46.0032

CSS Examples

Text

The CSS property to change the color of the text to XYZ 56.2015, 43.6875, 40.5923 is called "color". The color property can be set on classes, ids or directly on the HTML element.

This example shows how text in the color `rgb(249, 147, 164)` looks like.

```
.text, #text, p{  
    color:rgb(249, 147, 164)  
}
```

If you want to add a text shadow in that color use the text-shadow property, you can generate a text shadow directly with our [CSS Text Shadow Generator](#).

Here you see how black text with a 4 pixel rgb(249, 147, 164) colored shadow looks like.

```
.shadow{ text-shadow: 4px 4px 2px rgb(249, 147, 164) }
```

Border

The CSS property to change the border of an element to XYZ 56.2015, 43.6875, 40.5923 is called "border". The border property can be set on classes, ids or directly on the HTML element.

This example shows the color as border, it can be applied via the CSS property "border" or "border-color".

```
.border, #border, table{ border:4px solid rgb(249, 147, 164) }
```


If only the border color should be changed use the property `border-color`.

```
.border{ border-color:rgb(249, 147, 164) }
```

If you want to add a box shadow in that color use:

Here you see how a box with a 4 pixel `rgb(249, 147, 164)` colored shadow looks like.

```
.boxshadow{ -moz-box-shadow:4px 4px 4px  
4px rgb(249, 147, 164); -webkit-box-  
shadow:4px 4px 4px 4px rgb(249, 147, 164);  
box-shadow:4px 4px 4px 4px rgb(249, 147,  
164) }
```

Background

The CSS property to change the background color of an element to XYZ 56.2015, 43.6875, 40.5923 is called "background". The background property can be set on classes, ids or directly on the HTML element.

```
.background, #background, body{  
background: rgb(249, 147, 164) }
```

If only the background color should be changed can be used:

```
.background{ background-color: rgb(249,  
147, 164) }
```

This example shows the color as background, it is applied via the CSS property "background".

To optimize and compress your CSS code, you can use our [online CSS compressor and optimizer](#) based on csstidy. If you want to create a linear or radial gradient as background or border, check our [CSS Gradient Generator](#).

Hey! You found this booklet interesting? Support Converting Colors with the new Membership Option!

The pro membership hides all ads, plus gives you double the colors in the color bucket, and more awesome pro features!

[Learn more, Memberships starting at \\$2.50/m!](#)

**Follow me
on Twitter!**

@ConvertingColor