

Converting Colors

XYZ(56.2676, 54.4083, 59.0629)

Have a look what the booklet for
XYZ(56.2676, 54.4083, 59.0629)
contains.

XYZ(56.4488, 54.6583, 59.2047)	3
<i>Conversions</i>	4
<i>Details</i>	6
<i>Harmonies</i>	12
<i>Previews</i>	24
<i>Color Blindness Simulation</i>	28
<i>CSS Examples</i>	31

Color

**XYZ(56.4488, 54.6583,
59.2047)**

Conversions

Conversions Part 1

Format	Color
Hex	D9BCC3
RGB	217, 188, 195
RGB Percent	85%, 74%, 76%
CMY	0.1490, 0.2627, 0.2353
CMYK	0.00, 0.13, 0.10, 0.15
HSL	346°, 28%, 79%
HSV	346°, 13%, 85%
XYZ	56.4488, 54.6583, 59.2047
YIQ	197.4690, 15.0370, 8.3250

Conversions

Conversions Part 2

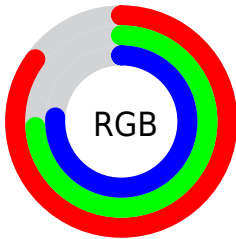
Format	Color
R _Y B	217, 188, 195
Decimal	14269635
CIE Lab	78.84, 11.47, 0.28
CIE LCh	79, 11.476, 1.415
Yxy	54.6583, 0.3314, 0.3209
Android (android.graphics.Color)	4292459715 (0xFFD9BCC3)
YUV	197.4690, -1.2172, 17.1287
Hunter-Lab	73.9313, 6.9106, 4.2720

Details

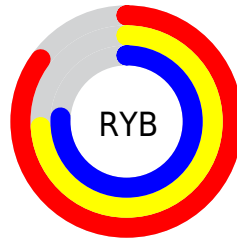
The XYZ color **56.4488, 54.6583, 59.2047** is a light color, and the websafe version is hex **CCCCCC**. A complement of this color would be **57.1869, 64.9716, 70.5026**, and the grayscale version is **53.3565, 56.1352, 61.1312**.

A 20% lighter version of the original color is **91.1614, 92.9896, 105.2395**, and **28.3720, 26.9324, 28.9024** is the 20% darker color. If you saturate the color by 10%, you get **50.3972, 45.3713, 48.5041**, and if you desaturate by 10%, it is **63.4058, 65.4262, 71.2212**.

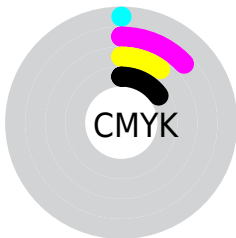
Distribution



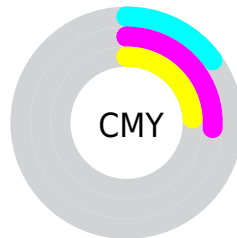
- Red (85%)
- Green (74%)
- Blue (76%)



- Red (85%)
- Yellow (74%)
- Blue (76%)



- Cyan (0%)
- Magenta (13%)
- Yellow (10%)
- Black (15%)





- Cyan (15%)
- Magenta (26%)
- Yellow (24%)

Brightness & Saturation Gradients


These gradients show how the XYZ color 56.4488, 54.6583, 59.2047 changes by changing the brightness by 10 percent. The first figure shows a shift by +10% for each color and the second figure -10%.


Similar to the brightness gradients but the following saturation gradients show a change of the XYZ color 56.4488, 54.6583, 59.2047 by changing the saturation by 10% instead.


 56.4488, 54.6583,
59.2047

 56.4488, 54.6583,
59.2047


401.4283,
404.6154, 439.3831

 40.8013, 39.1282,
42.3568


 98.7965, 97.0401,
105.2072

 28.3508, 26.8595,
29.0531


126.2273,
124.6607, 135.1988

 18.7321, 17.4677,
18.8751


158.3167,
157.0801, 170.4089

 11.5797, 10.5685,
11.4042

195.4299,
194.6829, 211.2558

 6.5283, 5.7775,
6.2218

237.9323,
237.8535, 258.1581

 3.2126, 2.7103,
2.9094

286.1893,

 1.2672, 0.9824,

286.9761, 311.5344

1.0486

340.5662,
342.4353, 371.8032

■ 0.1584, 0.0000,
0.0000

■ 0.0000, 0.0000,
0.0000

■ 56.4488, 54.6583,
59.2047

■ 56.4488, 54.6583,
59.2047

■ 50.3972, 45.3713,
48.5041

■ 63.4058, 65.4262,
71.2212

■ 45.2087, 37.4934,
39.0705

■ 71.2989, 77.7284,
84.5930

■ 40.8446, 30.9574,
30.8573

■ 80.1632, 91.6247,
99.3624

■ 37.2612, 25.6879,
23.8135

■ 82.4255, 93.4918,
108.3092

■ 34.4107, 21.6020,
17.8844

■ 32.2400, 18.6068,
13.0107

■ 30.6884, 16.5955,
9.1271

■ 29.6833, 15.4390,
6.1603

■ 29.2434, 15.0030,
4.6458

Harmonies

Analogous

The Analogous color harmony consists of three colors that are next to each other on the color wheel.



55.8884, 54.6583, 65.7123



56.4488, 54.6583, 59.2047



55.7751, 54.6583, 53.2185

Triad

The Triadic color harmony groups three colors that are evenly spaced from another and form a triangle on the color wheel.



56.4488, 54.6583, 59.2047



49.7038, 54.6583, 49.4479



49.8857, 54.6583, 71.2084

Complementary

The Complementary color scheme is a pair of colors which are on the opposite of each other on the color wheel.



56.4488, 54.6583, 59.2047



57.1869, 64.9716, 70.5026

Split Complementary

Split-complementary colors differ from the complementary color scheme. The scheme consists of three colors, the original color and two neighbors of the complement color.



48.3060, 54.6583, 66.2866



56.4488, 54.6583, 59.2047



48.2031, 54.6583, 53.7175

Square

The Square scheme is like the rectangle color scheme, but the four colors are evenly spaced on the color wheel.



56.4488, 54.6583, 59.2047



51.8431, 54.6583, 47.8456



47.6988, 54.6583, 59.8236



52.0592, 54.6583, 72.9393

Rectangle

The Rectangle color scheme consists of four colors that form a rectangle on the color wheel.



56.4488, 54.6583, 59.2047



54.7278, 54.6583, 50.2465



47.6988, 54.6583, 59.8236



49.2699, 54.6583, 69.8554

Sweetspot

The Sweet Spot groups the original color and five complimentary colors.



56.4503, 54.6607, 59.2059



90.6608, 93.1754, 101.4134



57.0166, 54.6437, 73.1884



19.2337, 19.6773, 21.4129



0.0000, 0.0000, 0.0000



20.3446, 21.4041, 23.3091

Same Dimension

The Same Dimension uses a secret algorithm to generate beautiful new colors.



56.4503, 54.6607, 59.2059



78.7978, 74.8387, 80.8447



57.2653, 57.5271, 55.6656



13.1842, 13.1028, 14.2312



17.7372, 9.0959, 2.9961



1.1831, 0.6029, 0.3729

Inverse Universe

The Inverse Universe completely reimagines the original color for something new.



56.4503, 54.6607, 59.2059



78.7978, 74.8387, 80.8447



56.2502, 61.6726, 74.5855



13.1842, 13.1028, 14.2312



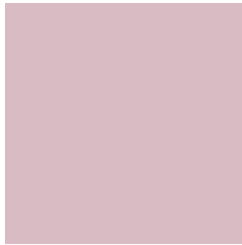
17.7372, 9.0959, 2.9961



1.1831, 0.6029, 0.3729

Previews

White Background



This preview shows how the XYZ color 56.4488, 54.6583, 59.2047 looks on a white background.

Color Contrast Check

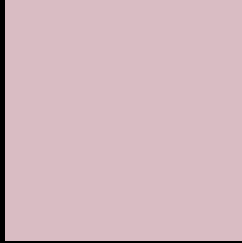
Large Text (above 18pt) WCAG AA × Fail

Any Text WCAG AA × Fail

Large Text (above 18pt) WCAG AAA × Fail

Any Text WCAG AAA × Fail

Black Background



This preview shows how the XYZ color 56.4488, 54.6583, 59.2047 looks on a black background.

Color Contrast Check

Large Text (above 18pt) WCAG AA ✓ Pass

Any Text WCAG AA ✓ Pass

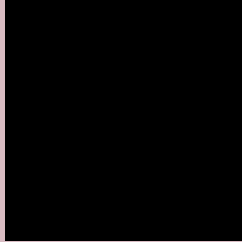
Large Text (above 18pt) WCAG AAA ✓ Pass

Any Text WCAG AAA ✓ Pass

If you want to check with other color combinations, try the [Color Contrast Checker](#).

XYZ 56.4488, 54.6583, 59.2047

Background



This preview shows how black text looks on a background with the XYZ color 56.4488, 54.6583, 59.2047.



This preview shows how white text looks on a background with the XYZ color 56.4488, 54.6583,

Color Blindness Simulation

Color vision deficiency is a very complex topic, and I could not describe the different causes any better than Wikipedia does, so if you want to learn more, you should check out their [article about color blindness](#).

Dichromacy



Original Color

56.4488, 54.6583, 59.2047

Protanopia

52.8893, 54.7129, 61.8059

Deuteranopia

55.7795, 54.6315, 59.2348



Tritanopia

57.3444, 54.7103, 63.4149

Trichromacy



Original Color

56.4488, 54.6583, 59.2047

Protanomaly

54.2195, 54.7556, 61.1373

Deuteranomaly

56.0723, 54.7824, 59.2485

Tritanomaly

56.9926, 54.5696, 61.5620

Monochromacy



Original Color

56.4488, 54.6583, 59.2047

Achromatopsia

53.0703, 55.8340, 60.8033

Achromatomaly

54.1574, 55.4065, 60.0647

CSS Examples

Text

The CSS property to change the color of the text to XYZ 56.4488, 54.6583, 59.2047 is called "color". The color property can be set on classes, ids or directly on the HTML element.

This example shows how text in the color rgb(217, 188, 195) looks like.

```
.text, #text, p{  
    color:rgb(217, 188, 195)  
}
```

If you want to add a text shadow in that color use the text-shadow property, you can generate a text shadow directly with our [CSS Text Shadow Generator](#).

Here you see how black text with a 4 pixel rgb(217, 188, 195) colored shadow looks like.

```
.shadow{ text-shadow: 4px 4px 2px rgb(217, 188, 195) }
```

Border

The CSS property to change the border of an element to XYZ 56.4488, 54.6583, 59.2047 is called "border". The border property can be set on classes, ids or directly on the HTML element.

This example shows the color as border, it can be applied via the CSS property "border" or "border-color".

```
.border, #border, table{ border:4px solid rgb(217, 188, 195) }
```


If only the border color should be changed use the property `border-color`.

```
.border{ border-color:rgb(217, 188, 195) }
```

If you want to add a box shadow in that color use:

Here you see how a box with a 4 pixel `rgb(217, 188, 195)` colored shadow looks like.

```
.boxshadow{ -moz-box-shadow:4px 4px 4px  
4px rgb(217, 188, 195); -webkit-box-  
shadow:4px 4px 4px 4px rgb(217, 188, 195);  
box-shadow:4px 4px 4px 4px rgb(217, 188,  
195) }
```

Background

The CSS property to change the background color of an element to XYZ 56.4488, 54.6583, 59.2047 is called "background". The background property can be set on classes, ids or directly on the HTML element.

```
.background, #background, body{  
background: rgb(217, 188, 195) }
```

If only the background color should be changed can be used:

```
.background{ background-color: rgb(217,  
188, 195) }
```

This example shows the color as background, it is applied via the CSS property "background".

To optimize and compress your CSS code, you can use our [online CSS compressor and optimizer](#) based on csstidy. If you want to create a linear or radial gradient as background or border, check our [CSS Gradient Generator](#).

Hey! You found this booklet interesting? Support Converting Colors with the new Membership Option!

The pro membership hides all ads, plus gives you double the colors in the color bucket, and more awesome pro features!

[Learn more, Memberships starting at \\$2.50/m!](#)

**Follow me
on Twitter!**

@ConvertingColor