

Converting Colors

XYZ(56.2925, 54.3165, 53.0020)

Have a look what the booklet for
XYZ(56.2925, 54.3165, 53.0020)
contains.

XYZ(56.2408, 54.3735, 52.8783)	3
<i>Conversions</i>	4
<i>Details</i>	6
<i>Harmonies</i>	12
<i>Previews</i>	24
<i>Color Blindness Simulation</i>	28
<i>CSS Examples</i>	31

Color

**XYZ(56.2408, 54.3735,
52.8783)**

Conversions

Conversions Part 1

Format	Color
Hex	DDBBB8
RGB	221, 187, 184
RGB Percent	87%, 73%, 72%
CMY	0.1333, 0.2666, 0.2784
CMYK	0.00, 0.15, 0.17, 0.13
HSL	5°, 35%, 79%
HSV	5°, 17%, 87%
XYZ	56.2408, 54.3735, 52.8783
YIQ	196.8240, 21.2270, 6.2750

Conversions

Conversions Part 2

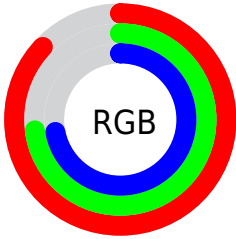
Format	Color
R _Y B	221, 187, 184
Decimal	14531512
CIE Lab	78.68, 11.67, 6.03
CIE LCh	79, 13.135, 27.346
Yxy	54.3735, 0.3440, 0.3326
Android (android.graphics.Color)	4292721592 (0xFFDDBBB8)
YUV	196.8240, -6.3222, 21.2024
Hunter-Lab	73.7384, 7.1011, 9.0996

Details

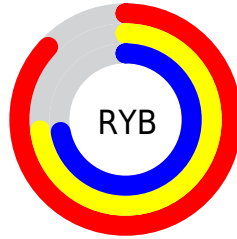
The XYZ color **56.2408, 54.3735, 52.8783** is a light color, and the websafe version is hex **FFCCCC**. A complement of this color would be **57.8891, 65.5519, 78.0087**, and the grayscale version is **52.9939, 55.7538, 60.7158**.

A 20% lighter version of the original color is **89.0188, 91.6525, 95.4370**, and **28.3477, 26.7959, 25.1508** is the 20% darker color. If you saturate the color by 10%, you get **50.0955, 45.5049, 40.2794**, and if you desaturate by 10%, it is **63.3601, 64.6099, 67.5886**.

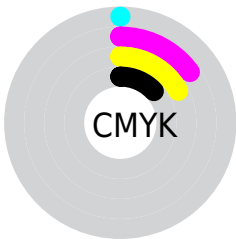
Distribution



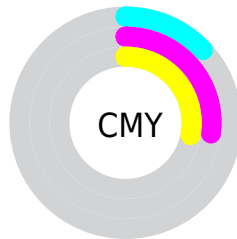
- Red (87%)
- Green (73%)
- Blue (72%)



- Red (87%)
- Yellow (73%)
- Blue (72%)



- Cyan (0%)
- Magenta (15%)
- Yellow (17%)
- Black (13%)





- Cyan (13%)
- Magenta (27%)
- Yellow (28%)

Brightness & Saturation Gradients


These gradients show how the XYZ color 56.2408, 54.3735, 52.8783 changes by changing the brightness by 10 percent. The first figure shows a shift by +10% for each color and the second figure -10%.


Similar to the brightness gradients but the following saturation gradients show a change of the XYZ color 56.2408, 54.3735, 52.8783 by changing the saturation by 10% instead.


 56.2408, 54.3735,
52.8783

 56.2408, 54.3735,
52.8783


400.6587,
403.5327, 414.8711

 40.6338, 38.9003,
37.3186


 98.4943, 96.6224,
95.8650

 28.2194, 26.6822,
25.1565


125.8716,
124.1670, 124.1290

 18.6324, 17.3347,
15.9736


157.9029,
156.5042, 157.4649

 11.5074, 10.4734,
9.3513

194.9537,
194.0183, 196.2912

 6.4790, 5.7140,
4.8711

237.3893,
237.0938, 241.0264

 3.1819, 2.6719,
2.1144

285.5751,

 1.2507, 0.9630,

286.1151, 292.0891

0.6243

339.8764,
341.4666, 349.8978

■ 0.1458, 0.0000,
0.0000

■ 0.0000, 0.0000,
0.0000

■ 56.2408, 54.3735,
52.8783

■ 56.2408, 54.3735,
52.8783

■ 50.0955, 45.5049,
40.2794

■ 63.3601, 64.6099,
67.5886

■ 44.8777, 37.9393,
29.6919

■ 71.4886, 76.2610,
84.4975

■ 40.5434, 31.6175,
21.0125

■ 80.6651, 89.3804,
103.6911

■ 37.0436, 26.4728,
14.1276

■ 83.6289, 94.1122,
108.3655

■ 34.3244, 22.4324,
8.9116

■ 32.3255, 19.4151,
5.2223

■ 30.9777, 17.3290,
2.8941

■ 30.1967, 16.0646,
1.7160

■ 30.0343, 15.8030,
1.4673

Harmonies

Analogous

The Analogous color harmony consists of three colors that are next to each other on the color wheel.



56.8271, 54.3735, 59.8678



56.2408, 54.3735, 52.8783



54.4199, 54.3735, 47.9678

Triad

The Triadic color harmony groups three colors that are evenly spaced from another and form a triangle on the color wheel.



56.2408, 54.3735, 52.8783



47.5918, 54.3735, 51.8223



51.4496, 54.3735, 74.6578

Complementary

The Complementary color scheme is a pair of colors which are on the opposite of each other on the color wheel.



56.2408, 54.3735, 52.8783



57.8891, 65.5519, 78.0087

Split Complementary

Split-complementary colors differ from the complementary color scheme. The scheme consists of three colors, the original color and two neighbors of the complement color.



49.0343, 54.3735, 72.0696



56.2408, 54.3735, 52.8783



46.8542, 54.3735, 58.5441

Square

The Square scheme is like the rectangle color scheme, but the four colors are evenly spaced on the color wheel.



56.2408, 54.3735, 52.8783



49.4218, 54.3735, 47.3949



47.3734, 54.3735, 66.0140



54.0067, 54.3735, 72.8267

Rectangle

The Rectangle color scheme consists of four colors that form a rectangle on the color wheel.



56.2408, 54.3735, 52.8783



52.7813, 54.3735, 46.3254



47.3734, 54.3735, 66.0140



50.5949, 54.3735, 74.2711

Sweetspot

The Sweet Spot groups the original color and five complimentary colors.



56.2423, 54.3759, 52.8794



89.4406, 91.9579, 97.2370



59.6846, 54.7437, 74.1174



18.9814, 19.4495, 20.4753



0.0000, 0.0000, 0.0000



20.3446, 21.4041, 23.3091

Same Dimension

The Same Dimension uses a secret algorithm to generate beautiful new colors.



56.2423, 54.3759, 52.8794



74.7293, 70.8002, 66.8539



60.2944, 62.4801, 54.2301



13.1406, 13.2205, 13.5848



17.4803, 9.2461, 0.8634



1.1627, 0.6594, 0.0660

Inverse Universe

The Inverse Universe completely reimagines the original color for something new.



57.8891, 65.5519, 78.0087



77.4050, 88.9637, 107.6998



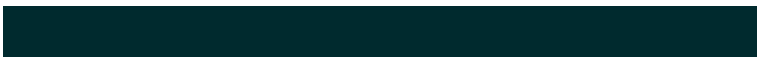
53.4809, 56.7354, 76.5392



13.3497, 14.6392, 16.7742



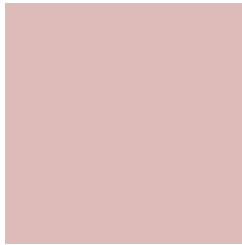
20.0350, 27.9394, 44.0753



1.3253, 1.8647, 2.8645

Previews

White Background



This preview shows how the XYZ color 56.2408, 54.3735, 52.8783 looks on a white background.

Color Contrast Check

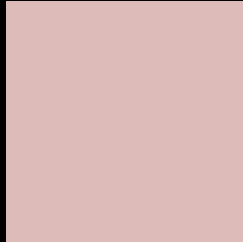
Large Text (above 18pt) WCAG AA × Fail

Any Text WCAG AA × Fail

Large Text (above 18pt) WCAG AAA × Fail

Any Text WCAG AAA × Fail

Black Background



This preview shows how the XYZ color 56.2408, 54.3735, 52.8783 looks on a black background.

Color Contrast Check

Large Text (above 18pt) WCAG AA ✓ Pass

Any Text WCAG AA ✓ Pass

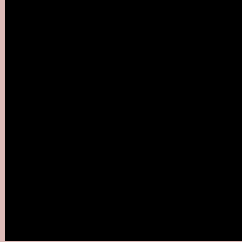
Large Text (above 18pt) WCAG AAA ✓ Pass

Any Text WCAG AAA ✓ Pass

If you want to check with other color combinations, try the [Color Contrast Checker](#).

XYZ 56.2408, 54.3735, 52.8783

Background



This preview shows how black text looks on a background with the XYZ color 56.2408, 54.3735, 52.8783.



This preview shows how white text looks on a background with the XYZ color 56.2408, 54.3735,

Color Blindness Simulation

Color vision deficiency is a very complex topic, and I could not describe the different causes any better than Wikipedia does, so if you want to learn more, you should check out their [article about color blindness](#).

Dichromacy



Original Color

56.2408, 54.3735, 52.8783

Protanopia

52.1883, 54.4938, 55.3447

Deuteranopia

55.5484, 54.3326, 52.9069



Tritanopia

58.0892, 54.5094, 61.4926

Trichromacy



Original Color

56.2408, 54.3735, 52.8783

Protanomaly

53.6129, 54.2594, 54.6611

Deuteranomaly

55.8484, 54.4872, 52.9210

Tritanomaly

57.4207, 54.5424, 58.5403

Monochromacy



Original Color

56.2408, 54.3735, 52.8783

Achromatopsia

53.0703, 55.8340, 60.8033

Achromatomaly

54.0380, 55.0675, 57.6502

CSS Examples

Text

The CSS property to change the color of the text to XYZ 56.2408, 54.3735, 52.8783 is called "color". The color property can be set on classes, ids or directly on the HTML element.

This example shows how text in the color `rgb(221, 187, 184)` looks like.

```
.text, #text, p{  
    color:rgb(221, 187, 184)  
}
```

If you want to add a text shadow in that color use the text-shadow property, you can generate a text shadow directly with our [CSS Text Shadow Generator](#).

Here you see how black text with a 4 pixel rgb(221, 187, 184) colored shadow looks like.

```
.shadow{ text-shadow: 4px 4px 2px rgb(221, 187, 184) }
```

Border

The CSS property to change the border of an element to XYZ 56.2408, 54.3735, 52.8783 is called "border". The border property can be set on classes, ids or directly on the HTML element.

This example shows the color as border, it can be applied via the CSS property "border" or "border-color".

```
.border, #border, table{ border:4px solid rgb(221, 187, 184) }
```


If only the border color should be changed use the property `border-color`.

```
.border{ border-color:rgb(221, 187, 184) }
```

If you want to add a box shadow in that color use:

Here you see how a box with a 4 pixel `rgb(221, 187, 184)` colored shadow looks like.

```
.boxshadow{ -moz-box-shadow:4px 4px 4px 4px rgb(221, 187, 184); -webkit-box-shadow:4px 4px 4px 4px rgb(221, 187, 184); box-shadow:4px 4px 4px 4px rgb(221, 187, 184) }
```

Background

The CSS property to change the background color of an element to XYZ 56.2408, 54.3735, 52.8783 is called "background". The background property can be set on classes, ids or directly on the HTML element.

```
.background, #background, body{  
background: rgb(221, 187, 184) }
```

If only the background color should be changed can be used:

```
.background{ background-color: rgb(221,  
187, 184) }
```

This example shows the color as background, it is applied via the CSS property "background".

To optimize and compress your CSS code, you can use our [online CSS compressor and optimizer](#) based on csstidy. If you want to create a linear or radial gradient as background or border, check our [CSS Gradient Generator](#).

Hey! You found this booklet interesting? Support Converting Colors with the new Membership Option!

The pro membership hides all ads, plus gives you double the colors in the color bucket, and more awesome pro features!

[Learn more, Memberships starting at \\$2.50/m!](#)

**Follow me
on Twitter!**

@ConvertingColor