

# Converting Colors

XYZ(56.4325, 53.9442, 50.3627)

Have a look what the booklet for  
XYZ(56.4325, 53.9442, 50.3627)  
contains.

<b>XYZ(56.3277, 53.8405, 50.6035)</b> .....	3
<b><i>Conversions</i></b> .....	4
<b><i>Details</i></b> .....	6
<b><i>Harmonies</i></b> .....	12
<b><i>Previews</i></b> .....	24
<b><i>Color Blindness Simulation</i></b> .....	28
<b><i>CSS Examples</i></b> .....	31

# Color

**XYZ(56.3277, 53.8405,  
50.6035)**

# Conversions

## Conversions Part 1

Format	Color
Hex	E0B9B4
RGB	224, 185, 180
RGB Percent	88%, 73%, 71%
CMY	0.1216, 0.2745, 0.2941
CMYK	0.00, 0.17, 0.20, 0.12
HSL	7°, 42%, 79%
HSV	7°, 20%, 88%
XYZ	56.3277, 53.8405, 50.6035
YIQ	196.0910, 24.8490, 6.7130

# Conversions

## Conversions Part 2

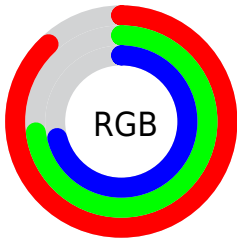
Format	Color
<a href="#">RYB</a>	<a href="#">224, 186, 180</a>
Decimal	<a href="#">14727604</a>
CIELab	<a href="#">78.37, 13.22, 7.79</a>
CIELCh	<a href="#">78, 15.343, 30.494</a>
Yxy	<a href="#">53.8405, 0.3504, 0.3349</a>
Android (android.graphics.Color)	<a href="#">4292917684</a> ( <a href="#">0xFFE0B9B4</a> )
YUV	<a href="#">196.0910, -7.9329, 24.4762</a>
Hunter-Lab	<a href="#">73.3761, 8.6187, 10.4742</a>

# Details

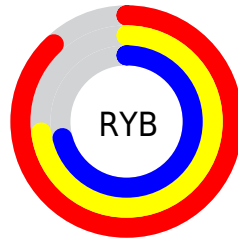
The XYZ color **56.3277, 53.8405, 50.6035** is a light color, and the websafe version is hex **FFCCCC**. A complement of this color would be **57.6081, 65.7467, 80.1757**, and the grayscale version is **52.5608, 55.2981, 60.2196**.

A 20% lighter version of the original color is **87.8356, 90.2267, 92.1429**, and **28.2305, 26.3597, 23.6787** is the 20% darker color. If you saturate the color by 10%, you get **50.3607, 45.2678, 38.2514**, and if you desaturate by 10%, it is **63.2464, 63.7254, 65.0935**.

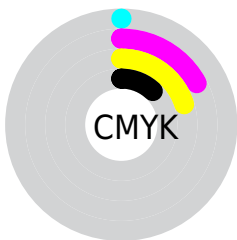
# Distribution



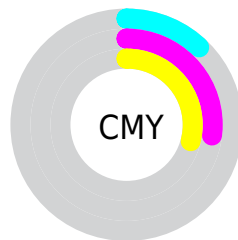
- Red (88%)
- Green (73%)
- Blue (71%)



- Red (88%)
- Yellow (73%)
- Blue (71%)



- Cyan (0%)
- Magenta (17%)
- Yellow (20%)
- Black (12%)



- Cyan (12%)
- Magenta (27%)
- Yellow (29%)

# Brightness & Saturation Gradients

These gradients show how the XYZ color 56.3277, 53.8405, 50.6035 changes by changing the brightness by 10 percent. The first figure shows a shift by +10% for each color and the second figure -10%.


Similar to the brightness gradients but the following saturation gradients show a change of the XYZ color 56.3277, 53.8405, 50.6035 by changing the saturation by 10% instead.





 56.3277, 53.8405,  
50.6035

 56.3277, 53.8405,  
50.6035


400.9803,  
401.5015, 405.8238

 40.7038, 38.4742,  
35.5186


 98.6206, 95.8400,  
92.4739

 28.2743, 26.3509,  
23.7759

126.0202,  
123.2420, 120.0965

 18.6741, 17.0863,  
14.9568


158.0758,  
155.4246, 152.7354

 11.5376, 10.2961,  
8.6428

195.1527,  
192.7723, 190.8092

 6.4996, 5.5957,  
4.4153

237.6162,  
235.6694, 234.7364

 3.1947, 2.6008,  
1.8558

285.8318,

 1.2575, 0.9271,

284.5004, 284.9355

0.4644

340.1647,  
339.6496, 341.8252

■ 0.1511, 0.0000,  
0.0000

■ 0.0000, 0.0000,  
0.0000

■ 56.3277, 53.8405,  
50.6035

■ 56.3277, 53.8405,  
50.6035

■ 50.3607, 45.2678,  
38.2514

■ 63.2464, 63.7254,  
65.0935

■ 45.2994, 37.9451,  
27.9326

■ 71.1513, 74.9669,  
81.8123

■ 41.1006, 31.8161,  
19.5390

■ 80.0807, 87.6160,  
100.8498

■ 37.7157, 26.8173,  
12.9510

■ 84.5507, 94.5874,  
108.4086

■ 35.0914, 22.8793,  
8.0356

■ 33.1678, 19.9251,  
4.6415

■ 31.8759, 17.8670,  
2.5898

■ 31.1186, 16.5962,  
1.5862

■ 31.0986, 16.5632,  
1.5579

# Harmonies

## Analogous

The Analogous color harmony consists of three colors that are next to each other on the color wheel.



57.1857, 53.8405, 58.4803



56.3277, 53.8405, 50.6035



54.0792, 53.8405, 45.3415

# Triad

The Triadic color harmony groups three colors that are evenly spaced from another and form a triangle on the color wheel.



56.3277, 53.8405, 50.6035



46.2975, 53.8405, 50.8284



51.2237, 53.8405, 76.8205

# Complementary

The Complementary color scheme is a pair of colors which are on the opposite of each other on the color wheel.



56.3277, 53.8405, 50.6035



57.6081, 65.7467, 80.1757

# Split Complementary

Split-complementary colors differ from the complementary color scheme. The scheme consists of three colors, the original color and two neighbors of the complement color.



48.3743, 53.8405, 74.2741



56.3277, 53.8405, 50.6035



45.5987, 53.8405, 58.7663

# Square

The Square scheme is like the rectangle color scheme, but the four colors are evenly spaced on the color wheel.



56.3277, 53.8405, 50.6035



48.2911, 53.8405, 45.4621



46.3442, 53.8405, 67.4483



54.1690, 53.8405, 74.1068



# Rectangle

The Rectangle color scheme consists of four colors that form a rectangle on the color wheel.



56.3277, 53.8405, 50.6035



52.1361, 53.8405, 43.7402



46.3442, 53.8405, 67.4483



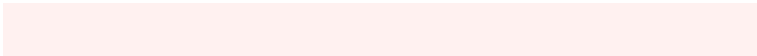
50.2233, 53.8405, 76.5488

# Sweetspot

The Sweet Spot groups the original color and five complimentary colors.



56.3292, 53.8429, 50.6046



88.5094, 90.7049, 95.0475



59.9277, 53.6367, 74.6277



18.7986, 19.2068, 20.0357



0.0000, 0.0000, 0.0000



20.3446, 21.4041, 23.3091



# Same Dimension

The Same Dimension uses a secret algorithm to generate beautiful new colors.



56.3292, 53.8429, 50.6046



71.7859, 66.8076, 60.0329



61.1471, 63.4787, 52.2106



13.8321, 13.9502, 14.2704



18.1435, 9.7250, 0.9208



1.3001, 0.7590, 0.0780



# Inverse Universe

The Inverse Universe completely reimagines the original color for something new.



57.6081, 65.7467, 80.1757



73.8265, 85.8222, 107.2820



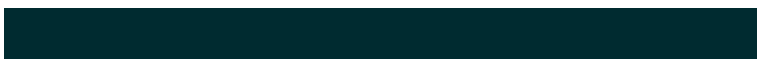
52.3804, 55.2914, 78.4331



13.9765, 15.2922, 17.6027



19.7098, 26.8892, 45.1997

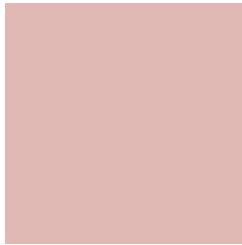


1.4045, 1.9405, 3.1458



# Previews

## White Background



This preview shows how the XYZ color 56.3277, 53.8405, 50.6035 looks on a white background.

## Color Contrast Check

Large Text (above 18pt) WCAG AA × Fail

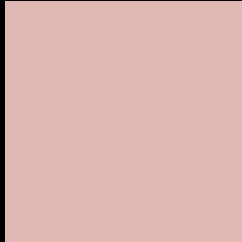
Any Text WCAG AA × Fail

Large Text (above 18pt) WCAG AAA × Fail

Any Text WCAG AAA × Fail



# Black Background



This preview shows how the XYZ color 56.3277, 53.8405, 50.6035 looks on a black background.

## Color Contrast Check

Large Text (above 18pt) WCAG AA ✓ Pass

Any Text WCAG AA ✓ Pass

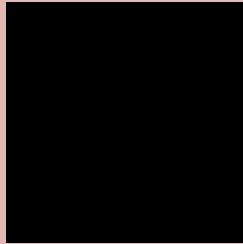
Large Text (above 18pt) WCAG AAA ✓ Pass

Any Text WCAG AAA ✓ Pass

If you want to check with other color combinations, try the [Color Contrast Checker](#).

**XYZ 56.3277, 53.8405, 50.6035**

## **Background**



This preview shows how black text looks on a background with the XYZ color 56.3277, 53.8405, 50.6035.



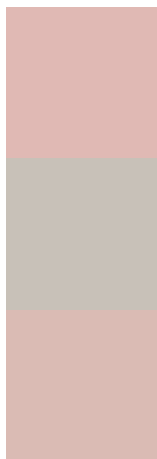
This preview shows how white text looks on a background with the XYZ color 56.3277, 53.8405,

50.6035.

# Color Blindness Simulation

Color vision deficiency is a very complex topic, and I could not describe the different causes any better than Wikipedia does, so if you want to learn more, you should check out their [article about color blindness](#).

## Dichromacy



### Original Color

56.3277, 53.8405, 50.6035

### Protanopia

51.5411, 53.8800, 53.0308

### Deuteranopia

54.9220, 53.7414, 50.6584



## Tritanopia

58.1700, 53.6559, 60.1140

# Trichromacy



## Original Color

56.3277, 53.8405, 50.6035

## Protanomaly

53.2552, 53.8011, 52.3775

## Deuteranomaly

55.3123, 53.6287, 50.6161

## Tritanomaly

57.3888, 53.6361, 56.6183

# Monochromacy



## Original Color

56.3277, 53.8405, 50.6035

## Achromatopsia

52.4687, 55.2011, 60.1140

## Achromatomaly

53.5975, 54.5388, 56.4173

# CSS Examples

## Text

The CSS property to change the color of the text to XYZ 56.3277, 53.8405, 50.6035 is called "color". The color property can be set on classes, ids or directly on the HTML element.

This example shows how text in the color `rgb(224, 185, 180)` looks like.

```
.text, #text, p{  
    color:rgb(224, 185, 180)  
}
```

If you want to add a text shadow in that color use the text-shadow property, you can generate a text shadow directly with our [CSS Text Shadow Generator](#).

Here you see how black text with a 4 pixel rgb(224, 185, 180) colored shadow looks like.

```
.shadow{ text-shadow: 4px 4px 2px rgb(224, 185, 180) }
```

## Border

The CSS property to change the border of an element to XYZ 56.3277, 53.8405, 50.6035 is called "border". The border property can be set on classes, ids or directly on the HTML element.

This example shows the color as border, it can be applied via the CSS property "border" or "border-color".

```
.border, #border, table{ border:4px solid rgb(224, 185, 180) }
```



If only the border color should be changed use the property `border-color`.

```
.border{ border-color:rgb(224, 185, 180) }
```

If you want to add a box shadow in that color use:

Here you see how a box with a 4 pixel `rgb(224, 185, 180)` colored shadow looks like.

```
.boxshadow{ -moz-box-shadow:4px 4px 4px  
4px rgb(224, 185, 180); -webkit-box-  
shadow:4px 4px 4px 4px rgb(224, 185, 180);  
box-shadow:4px 4px 4px 4px rgb(224, 185,  
180) }
```

# Background

The CSS property to change the background color of an element to XYZ 56.3277, 53.8405, 50.6035 is called "background". The background property can be set on classes, ids or directly on the HTML element.

```
.background, #background, body{  
background: rgb(224, 185, 180) }
```

If only the background color should be changed can be used:

```
.background{ background-color: rgb(224,  
185, 180) }
```

This example shows the color as background, it is applied via the CSS property "background".

To optimize and compress your CSS code, you can use our [online CSS compressor and optimizer](#) based on csstidy. If you want to create a linear or radial gradient as background or border, check our [CSS Gradient Generator](#).

Hey! You found this booklet interesting? Support Converting Colors with the new Membership Option!

The pro membership hides all ads, plus gives you double the colors in the color bucket, and more awesome pro features!

**[Learn more, Memberships starting at \\$2.50/m!](#)**

**Follow me  
on Twitter!**

@ConvertingColor