

Converting Colors

XYZ(56.4947, 57.3914, 58.6324)

Have a look what the booklet for
XYZ(56.4947, 57.3914, 58.6324)
contains.

XYZ(56.5169, 57.3272, 58.5386)	3
<i>Conversions</i>	4
<i>Details</i>	6
<i>Harmonies</i>	12
<i>Previews</i>	24
<i>Color Blindness Simulation</i>	28
<i>CSS Examples</i>	31

Color

**XYZ(56.5169, 57.3272,
58.5386)**

Conversions

Conversions Part 1

Format	Color
Hex	D4C4C1
RGB	212, 196, 193
RGB Percent	83%, 77%, 76%
CMY	0.1686, 0.2314, 0.2431
CMYK	0.00, 0.08, 0.09, 0.17
HSL	9°, 18%, 79%
HSV	9°, 9%, 83%
XYZ	56.5169, 57.3272, 58.5386
YIQ	200.4420, 10.4990, 2.4590

Conversions

Conversions Part 2

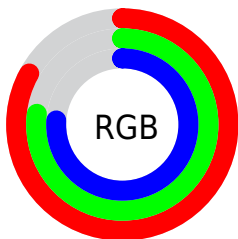
Format	Color
R_{YB}	212, 197, 193
Decimal	13944001
CIE Lab	80.36, 5.09, 3.52
CIE LCh	80, 6.190, 34.628
Yxy	57.3272, 0.3279, 0.3326
Android (android.graphics.Color)	4292134081 (0xFFD4C4C1)
YUV	200.4420, -3.6689, 10.1364
Hunter-Lab	75.7147, 0.7397, 7.1604

Details

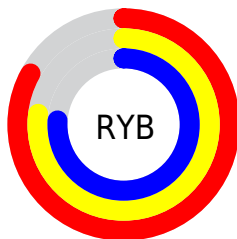
The XYZ color **56.5169, 57.3272, 58.5386** is a light color, and the websafe version is hex **CCCCCC**. A complement of this color would be **56.6761, 61.6905, 71.2081**, and the grayscale version is **55.1910, 58.0652, 63.2330**.

A 20% lighter version of the original color is **93.4642, 98.3501, 103.6799**, and **28.3113, 28.4076, 28.8020** is the 20% darker color. If you saturate the color by 10%, you get **50.5306, 48.8714, 45.6997**, and if you desaturate by 10%, it is **63.3245, 66.8815, 73.3252**.

Distribution



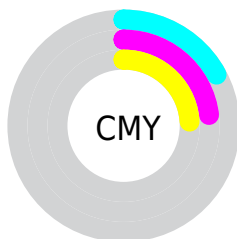
- Red (83%)
- Green (77%)
- Blue (76%)



- Red (83%)
- Yellow (77%)
- Blue (76%)



- Cyan (0%)
- Magenta (8%)
- Yellow (9%)
- Black (17%)



- Cyan (17%)
- Magenta (23%)
- Yellow (24%)

Brightness & Saturation Gradients

These gradients show how the XYZ color 56.5169, 57.3272, 58.5386 changes by changing the brightness by 10 percent. The first figure shows a shift by +10% for each color and the second figure -10%.

Similar to the brightness gradients but the following saturation gradients show a change of the XYZ color 56.5169, 57.3272, 58.5386 by changing the saturation by 10% instead.

■ 56.5169, 57.3272,
58.5386

■ 56.5169, 57.3272,
58.5386

401.6801,
414.6742, 436.8441

■ 40.8561, 41.2680,
41.8242

■ 98.8954, 100.9425,
104.2293

■ 28.3939, 28.5286,
28.6392

126.3438,
129.2673, 134.0427

■ 18.7647, 18.7245,
18.5648

158.4521,
162.4495, 169.0595

■ 11.6034, 11.4714,
11.1826

195.5857,
200.8734, 209.6983

■ 6.5445, 6.3848,
6.0741

238.1100,
244.9234, 256.3777

■ 3.2227, 3.0805,
2.8207

286.3902,

■ 1.2726, 1.1739,

294.9840, 309.5160

1.0038

340.7918,
351.4395, 369.5320

■ 0.1626, 0.0402,
0.0000

■ 0.0000, 0.0000,
0.0000

■ 56.5169, 57.3272,
58.5386

■ 56.5169, 57.3272,
58.5386

■ 50.5306, 48.8714,
45.6997

■ 63.3245, 66.8815,
73.3252

■ 45.3296, 41.4674,
34.7236

■ 70.9778, 77.5640,
90.1322

■ 40.8824, 35.0762,
25.5246

■ 79.2475, 89.3091,
107.6693

■ 37.1537, 29.6534,
18.0090

■ 80.9616, 92.7371,
108.2407

■ 34.1050, 25.1515,
12.0743

■ 31.6945, 21.5189,
7.6066

■ 29.8751, 18.6986,
4.4771

■ 28.5934, 16.6269,
2.5341

■ 27.7756, 15.2260,
1.5382

Harmonies

Analogous

The Analogous color harmony consists of three colors that are next to each other on the color wheel.



56.9520, 57.3272, 61.8584



56.5169, 57.3272, 58.5386



55.5382, 57.3272, 56.3259

Triad

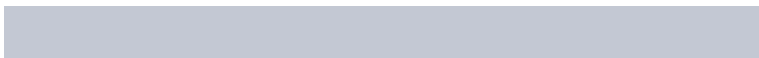
The Triadic color harmony groups three colors that are evenly spaced from another and form a triangle on the color wheel.



56.5169, 57.3272, 58.5386



52.3163, 57.3272, 59.4777



54.6846, 57.3272, 69.6346

Complementary

The Complementary color scheme is a pair of colors which are on the opposite of each other on the color wheel.



56.5169, 57.3272, 58.5386



56.6761, 61.6905, 71.2081

Split Complementary

Split-complementary colors differ from the complementary color scheme. The scheme consists of three colors, the original color and two neighbors of the complement color.



53.4507, 57.3272, 68.9376



56.5169, 57.3272, 58.5386



52.0957, 57.3272, 62.9842

Square

The Square scheme is like the rectangle color scheme, but the four colors are evenly spaced on the color wheel.



56.5169, 57.3272, 58.5386



53.1153, 57.3272, 56.8532



52.5078, 57.3272, 66.4684



55.8838, 57.3272, 68.3379

Rectangle

The Rectangle color scheme consists of four colors that form a rectangle on the color wheel.



56.5169, 57.3272, 58.5386



54.7162, 57.3272, 55.7283



52.5078, 57.3272, 66.4684



54.2601, 57.3272, 69.6261

Sweetspot

The Sweet Spot groups the original color and five complimentary colors.



56.5185, 57.3297, 58.5398



91.8223, 95.4764, 101.8684



57.7492, 56.7486, 68.3294



19.4733, 20.1828, 21.4119



0.0000, 0.0000, 0.0000



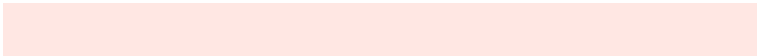
20.3446, 21.4041, 23.3091

Same Dimension

The Same Dimension uses a secret algorithm to generate beautiful new colors.



56.5185, 57.3297, 58.5398



83.7820, 84.1708, 84.4677



58.6927, 61.6782, 59.2646



12.5802, 12.7347, 12.9557



17.1541, 9.4255, 0.9152



1.0854, 0.6700, 0.0721

Inverse Universe

The Inverse Universe completely reimagines the original color for something new.



56.6761, 61.6905, 71.2081



84.0743, 92.2658, 107.9856



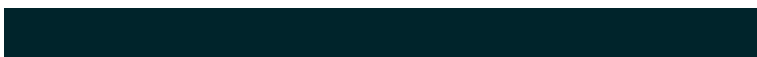
54.4500, 57.2383, 70.4661



12.6172, 13.7579, 15.9280



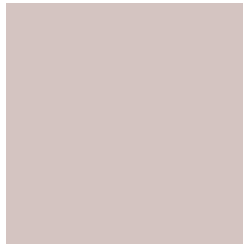
17.2851, 22.8320, 41.9492



1.0885, 1.4690, 2.5455

Previews

White Background



This preview shows how the XYZ color 56.5169, 57.3272, 58.5386 looks on a white background.

Color Contrast Check

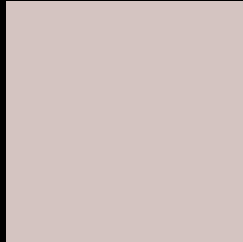
Large Text (above 18pt) WCAG AA × Fail

Any Text WCAG AA × Fail

Large Text (above 18pt) WCAG AAA × Fail

Any Text WCAG AAA × Fail

Black Background



This preview shows how the XYZ color 56.5169, 57.3272, 58.5386 looks on a black background.

Color Contrast Check

Large Text (above 18pt) WCAG AA ✓ Pass

Any Text WCAG AA ✓ Pass

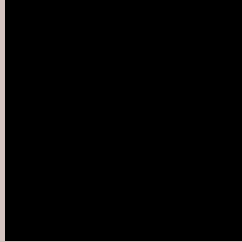
Large Text (above 18pt) WCAG AAA ✓ Pass

Any Text WCAG AAA ✓ Pass

If you want to check with other color combinations, try the [Color Contrast Checker](#).

XYZ 56.5169, 57.3272, 58.5386

Background



This preview shows how black text looks on a background with the XYZ color 56.5169, 57.3272, 58.5386.



This preview shows how white text looks on a background with the XYZ color 56.5169, 57.3272,

Color Blindness Simulation

Color vision deficiency is a very complex topic, and I could not describe the different causes any better than Wikipedia does, so if you want to learn more, you should check out their [article about color blindness](#).

Dichromacy



Original Color

56.5169, 57.3272, 58.5386

Protanopia

55.0629, 57.5793, 59.2507

Deuteranopia

58.6264, 57.4071, 59.0297



Tritanopia

58.5320, 57.4832, 68.3320

Trichromacy



Original Color

56.5169, 57.3272, 58.5386

Protanomaly

55.6638, 57.5486, 59.2131

Deuteranomaly

57.9428, 57.3840, 59.0612

Tritanomaly

57.7352, 57.4881, 64.5533

Monochromacy



Original Color

56.5169, 57.3272, 58.5386

Achromatopsia

54.8990, 57.7580, 62.8985

Achromatomaly

55.4033, 57.7154, 61.0434

CSS Examples

Text

The CSS property to change the color of the text to XYZ 56.5169, 57.3272, 58.5386 is called "color". The color property can be set on classes, ids or directly on the HTML element.

This example shows how text in the color rgb(212, 196, 193) looks like.

```
.text, #text, p{  
    color:rgb(212, 196, 193)  
}
```

If you want to add a text shadow in that color use the text-shadow property, you can generate a text shadow directly with our [CSS Text Shadow Generator](#).

Here you see how black text with a 4 pixel rgb(212, 196, 193) colored shadow looks like.

```
.shadow{ text-shadow: 4px 4px 2px rgb(212, 196, 193) }
```

Border

The CSS property to change the border of an element to XYZ 56.5169, 57.3272, 58.5386 is called "border". The border property can be set on classes, ids or directly on the HTML element.

This example shows the color as border, it can be applied via the CSS property "border" or "border-color".

```
.border, #border, table{ border:4px solid rgb(212, 196, 193) }
```


If only the border color should be changed use the property `border-color`.

```
.border{ border-color:rgb(212, 196, 193) }
```

If you want to add a box shadow in that color use:

Here you see how a box with a 4 pixel `rgb(212, 196, 193)` colored shadow looks like.

```
.boxshadow{ -moz-box-shadow:4px 4px 4px  
4px rgb(212, 196, 193); -webkit-box-  
shadow:4px 4px 4px 4px rgb(212, 196, 193);  
box-shadow:4px 4px 4px 4px rgb(212, 196,  
193) }
```

Background

The CSS property to change the background color of an element to XYZ 56.5169, 57.3272, 58.5386 is called "background". The background property can be set on classes, ids or directly on the HTML element.

```
.background, #background, body{  
background: rgb(212, 196, 193) }
```

If only the background color should be changed can be used:

```
.background{ background-color: rgb(212,  
196, 193) }
```

This example shows the color as background, it is applied via the CSS property "background".

To optimize and compress your CSS code, you can use our [online CSS compressor and optimizer](#) based on csstidy. If you want to create a linear or radial gradient as background or border, check our [CSS Gradient Generator](#).

Hey! You found this booklet interesting? Support Converting Colors with the new Membership Option!

The pro membership hides all ads, plus gives you double the colors in the color bucket, and more awesome pro features!

[Learn more, Memberships starting at \\$2.50/m!](#)

**Follow me
on Twitter!**

@ConvertingColor