

Converting Colors

XYZ(56.5422, 54.5648, 51.2680)

Have a look what the booklet for
XYZ(56.5422, 54.5648, 51.2680)
contains.

XYZ(56.5422, 54.5648, 51.2680)	3
<i>Conversions</i>	4
<i>Details</i>	6
<i>Harmonies</i>	12
<i>Previews</i>	24
<i>Color Blindness Simulation</i>	28
<i>CSS Examples</i>	31

Color

**XYZ(56.5422, 54.5648,
51.2680)**

Conversions

Conversions Part 1

Format	Color
Hex	DFBBB5
RGB	223, 187, 181
RGB Percent	87%, 73%, 71%
CMY	0.1255, 0.2666, 0.2902
CMYK	0.00, 0.16, 0.19, 0.13
HSL	9°, 40%, 79%
HSV	9°, 19%, 87%
XYZ	56.5422, 54.5648, 51.2680
YIQ	197.0800, 23.3820, 5.7660

Conversions

Conversions Part 2

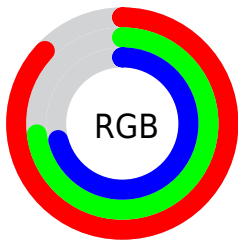
Format	Color
R_{YB}	223, 188, 181
Decimal	14662581
CIE _{Lab}	78.79, 11.94, 7.84
CIE _{LCh}	79, 14.280, 33.285
Yxy	54.5648, 0.3482, 0.3360
Android (android.graphics.Color)	4292852661 (0xFFDFBBB5)
YUV	197.0800, -7.9274, 22.7318
Hunter-Lab	73.8680, 7.3637, 10.5574

Details

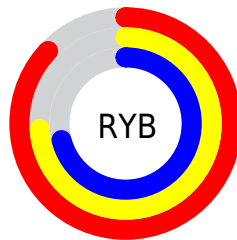
The XYZ color **56.5422, 54.5648, 51.2680** is a light color, and the websafe version is hex **FFCCCC**. A complement of this color would be **57.1876, 64.7755, 79.3012**, and the grayscale version is **53.1569, 55.9252, 60.9026**.

A 20% lighter version of the original color is **88.5767, 91.4756, 93.1088**, and **28.3577, 26.8242, 24.1050** is the 20% darker color. If you saturate the color by 10%, you get **50.6466, 46.1468, 38.9030**, and if you desaturate by 10%, it is **63.3466, 64.2135, 65.7441**.

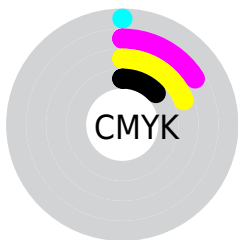
Distribution



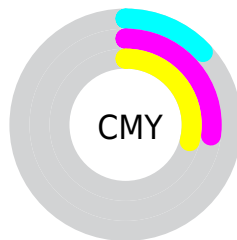
- Red (87%)
- Green (73%)
- Blue (71%)



- Red (87%)
- Yellow (74%)
- Blue (71%)



- Cyan (0%)
- Magenta (16%)
- Yellow (19%)
- Black (13%)





- Cyan (13%)
- Magenta (27%)
- Yellow (29%)

Brightness & Saturation Gradients


These gradients show how the XYZ color 56.5422, 54.5648, 51.2680 changes by changing the brightness by 10 percent. The first figure shows a shift by +10% for each color and the second figure -10%.


Similar to the brightness gradients but the following saturation gradients show a change of the XYZ color 56.5422, 54.5648, 51.2680 by changing the saturation by 10% instead.


 56.5422, 54.5648,
51.2680

 56.5422, 54.5648,
51.2680


401.7736,
404.2601, 408.4804

 40.8765, 39.0534,
36.0437


 98.9321, 96.9030,
93.4664

 28.4098, 26.8013,
24.1780


126.3870,
124.4986, 121.2775

 18.7769, 17.4240,
15.2523


158.5024,
156.8911, 154.1214

 11.6122, 10.5373,
8.8481

195.6436,
194.4648, 192.4165

 6.5505, 5.7566,
4.5468

238.1760,
237.6042, 236.5814

 3.2264, 2.6977,
1.9298

286.4649,

 1.2746, 0.9760,

286.6936, 287.0347

0.5116

340.8756,
342.1174, 344.1948

■ 0.1641, 0.0000,
0.0000

■ 0.0000, 0.0000,
0.0000

■ 56.5422, 54.5648,
51.2680

■ 56.5422, 54.5648,
51.2680

■ 50.6466, 46.1468,
38.9030

■ 63.3466, 64.2135,
65.7441

■ 45.6170, 38.9028,
28.5471

■ 71.0917, 75.1318,
82.4201

■ 41.4133, 32.7827,
20.0948

■ 79.8132, 87.3664,
101.3836

■ 37.9909, 27.7298,
13.4297

■ 84.2416, 94.4281,
108.3942

■ 35.3006, 23.6825,
8.4227

■ 33.2877, 20.5728,
4.9271

■ 31.8892, 18.3242,
2.7703

■ 31.0210, 16.8440,
1.6909

■ 30.9449, 16.7146,
1.5953

Harmonies

Analogous

The Analogous color harmony consists of three colors that are next to each other on the color wheel.



57.4829, 54.5648, 58.5238



56.5422, 54.5648, 51.2680



54.3455, 54.5648, 46.5578

Triad

The Triadic color harmony groups three colors that are evenly spaced from another and form a triangle on the color wheel.



56.5422, 54.5648, 51.2680



47.1548, 54.5648, 52.6819



52.1745, 54.5648, 76.3560

Complementary

The Complementary color scheme is a pair of colors which are on the opposite of each other on the color wheel.



56.5422, 54.5648, 51.2680



57.1876, 64.7755, 79.3012

Split Complementary

Split-complementary colors differ from the complementary color scheme. The scheme consists of three colors, the original color and two neighbors of the complement color.



49.4558, 54.5648, 74.4374



56.5422, 54.5648, 51.2680



46.6204, 54.5648, 60.3087

Square

The Square scheme is like the rectangle color scheme, but the four colors are evenly spaced on the color wheel.



56.5422, 54.5648, 51.2680



48.9347, 54.5648, 47.3205



47.4479, 54.5648, 68.3753



54.9042, 54.5648, 73.4050

Rectangle

The Rectangle color scheme consists of four colors that form a rectangle on the color wheel.



56.5422, 54.5648, 51.2680



52.5007, 54.5648, 45.2480



47.4479, 54.5648, 68.3753



51.2290, 54.5648, 76.2600

Sweetspot

The Sweet Spot groups the original color and five complimentary colors.



56.5437, 54.5673, 51.2691



88.6422, 90.9706, 95.0917



59.5323, 53.7670, 73.1595



18.8299, 19.2693, 20.0462



0.0000, 0.0000, 0.0000



20.3446, 21.4041, 23.3091

Same Dimension

The Same Dimension uses a secret algorithm to generate beautiful new colors.



56.5437, 54.5673, 51.2691



73.0116, 68.7972, 61.8647



61.2309, 63.9416, 52.8315



13.8645, 14.0150, 14.2812



18.2441, 9.9261, 0.9544



1.3154, 0.7897, 0.0831

Inverse Universe

The Inverse Universe completely reimagines the original color for something new.



57.1876, 64.7755, 79.3012



74.0494, 85.2894, 107.1674



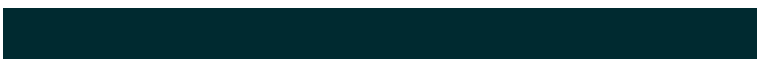
52.2062, 54.8127, 77.6407



13.9408, 15.2208, 17.5908



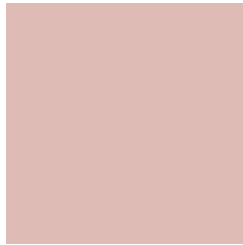
18.8654, 25.2004, 44.9182



1.3540, 1.8395, 3.1289

Previews

White Background



This preview shows how the XYZ color 56.5422, 54.5648, 51.2680 looks on a white background.

Color Contrast Check

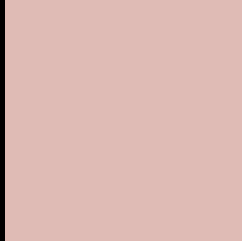
Large Text (above 18pt) WCAG AA × Fail

Any Text WCAG AA × Fail

Large Text (above 18pt) WCAG AAA × Fail

Any Text WCAG AAA × Fail

Black Background



This preview shows how the XYZ color 56.5422, 54.5648, 51.2680 looks on a black background.

Color Contrast Check

Large Text (above 18pt) WCAG AA ✓ Pass

Any Text WCAG AA ✓ Pass

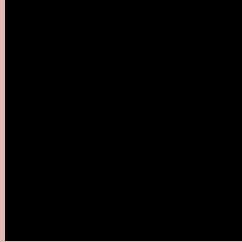
Large Text (above 18pt) WCAG AAA ✓ Pass

Any Text WCAG AAA ✓ Pass

If you want to check with other color combinations, try the [Color Contrast Checker](#).

XYZ 56.5422, 54.5648, 51.2680

Background



This preview shows how black text looks on a background with the XYZ color 56.5422, 54.5648, 51.2680.



This preview shows how white text looks on a background with the XYZ color 56.5422, 54.5648,

Color Blindness Simulation

Color vision deficiency is a very complex topic, and I could not describe the different causes any better than Wikipedia does, so if you want to learn more, you should check out their [article about color blindness](#).

Dichromacy



Original Color

56.5422, 54.5648, 51.2680

Protanopia

52.1361, 54.5039, 53.6714

Deuteranopia

55.5371, 54.3627, 51.2820



Tritanopia

58.5006, 54.4121, 61.4521

Trichromacy



Original Color

56.5422, 54.5648, 51.2680

Protanomaly

53.5770, 54.2776, 53.0002

Deuteranomaly

55.8389, 54.5183, 51.2961

Tritanomaly

57.6039, 54.3510, 57.3239

Monochromacy



Original Color

56.5422, 54.5648, 51.2680

Achromatopsia

53.0703, 55.8340, 60.8033

Achromatomaly

53.9275, 55.0233, 57.0685

CSS Examples

Text

The CSS property to change the color of the text to XYZ 56.5422, 54.5648, 51.2680 is called "color". The color property can be set on classes, ids or directly on the HTML element.

This example shows how text in the color `rgb(223, 187, 181)` looks like.

```
.text, #text, p{  
    color:rgb(223, 187, 181)  
}
```

If you want to add a text shadow in that color use the text-shadow property, you can generate a text shadow directly with our [CSS Text Shadow Generator](#).

Here you see how black text with a 4 pixel rgb(223, 187, 181) colored shadow looks like.

```
.shadow{ text-shadow: 4px 4px 2px rgb(223, 187, 181) }
```

Border

The CSS property to change the border of an element to XYZ 56.5422, 54.5648, 51.2680 is called "border". The border property can be set on classes, ids or directly on the HTML element.

This example shows the color as border, it can be applied via the CSS property "border" or "border-color".

```
.border, #border, table{ border:4px solid rgb(223, 187, 181) }
```


If only the border color should be changed use the property `border-color`.

```
.border{ border-color:rgb(223, 187, 181) }
```

If you want to add a box shadow in that color use:

Here you see how a box with a 4 pixel `rgb(223, 187, 181)` colored shadow looks like.

```
.boxshadow{ -moz-box-shadow:4px 4px 4px 4px rgb(223, 187, 181); -webkit-box-shadow:4px 4px 4px 4px rgb(223, 187, 181); box-shadow:4px 4px 4px 4px rgb(223, 187, 181) }
```

Background

The CSS property to change the background color of an element to XYZ 56.5422, 54.5648, 51.2680 is called "background". The background property can be set on classes, ids or directly on the HTML element.

```
.background, #background, body{  
background: rgb(223, 187, 181) }
```

If only the background color should be changed can be used:

```
.background{ background-color: rgb(223,  
187, 181) }
```

This example shows the color as background, it is applied via the CSS property "background".

To optimize and compress your CSS code, you can use our [online CSS compressor and optimizer](#) based on csstidy. If you want to create a linear or radial gradient as background or border, check our [CSS Gradient Generator](#).

Hey! You found this booklet interesting? Support Converting Colors with the new Membership Option!

The pro membership hides all ads, plus gives you double the colors in the color bucket, and more awesome pro features!

[Learn more, Memberships starting at \\$2.50/m!](#)

**Follow me
on Twitter!**

@ConvertingColor