

# Converting Colors

XYZ(56.5509, 57.1436, 57.9184)

Have a look what the booklet for  
XYZ(56.5509, 57.1436, 57.9184)  
contains.

<b>XYZ(56.4701, 56.9821, 57.8915)</b> .....	3
<b><i>Conversions</i></b> .....	4
<b><i>Details</i></b> .....	6
<b><i>Harmonies</i></b> .....	12
<b><i>Previews</i></b> .....	24
<b><i>Color Blindness Simulation</i></b> .....	28
<b><i>CSS Examples</i></b> .....	31

# Color

**XYZ(56.4701, 56.9821,  
57.8915)**

# Conversions

## Conversions Part 1

Format	Color
Hex	D5C3C0
RGB	213, 195, 192
RGB Percent	84%, 76%, 75%
CMY	0.1647, 0.2353, 0.2471
CMYK	0.00, 0.08, 0.10, 0.16
HSL	9°, 20%, 79%
HSV	9°, 10%, 84%
XYZ	56.4701, 56.9821, 57.8915
YIQ	200.0400, 11.6910, 2.8830

# Conversions

## Conversions Part 2

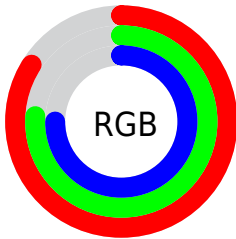
<b>Format</b>	<b>Color</b>
R <sub>Y</sub> B	213, 196, 192
Decimal	14009280
CIE Lab	80.17, 5.81, 3.78
CIE LCh	80, 6.936, 33.070
Yxy	56.9821, 0.3296, 0.3326
Android (android.graphics.Color)	4292199360 (0xFFD5C3C0)
YUV	200.0400, -3.9637, 11.3659
Hunter-Lab	75.4865, 1.4313, 7.3703

# Details

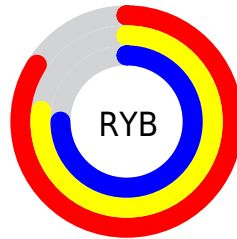
The XYZ color **56.4701, 56.9821, 57.8915** is a light color, and the websafe version is hex **CCCCCC**. A complement of this color would be **56.7949, 62.1026, 71.9450**, and the grayscale version is **54.9443, 57.8056, 62.9503**.

A 20% lighter version of the original color is **92.9937, 97.6581, 102.7555**, and **28.2856, 28.1829, 28.3751** is the 20% darker color. If you saturate the color by 10%, you get **50.4362, 48.4215, 45.0670**, and if you desaturate by 10%, it is **63.3487, 66.6843, 72.6841**.

# Distribution



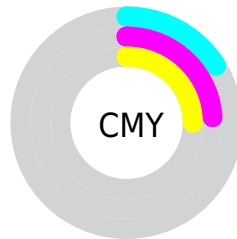
- Red (84%)
- Green (76%)
- Blue (75%)



- Red (84%)
- Yellow (77%)
- Blue (75%)



- Cyan (0%)
- Magenta (8%)
- Yellow (10%)
- Black (16%)



- Cyan (16%)
- Magenta (24%)
- Yellow (25%)

# Brightness & Saturation Gradients

These gradients show how the XYZ color 56.4701, 56.9821, 57.8915 changes by changing the brightness by 10 percent. The first figure shows a shift by +10% for each color and the second figure -10%.

Similar to the brightness gradients but the following saturation gradients show a change of the XYZ color 56.4701, 56.9821, 57.8915 by changing the saturation by 10% instead.



■ 56.4701, 56.9821,  
57.8915

■ 56.4701, 56.9821,  
57.8915

401.5071,  
413.3822, 434.3685

■ 40.8184, 40.9909,  
41.3073

■ 98.8274, 100.4391,  
103.2781

■ 28.3643, 28.3119,  
28.2378

126.2638,  
128.6736, 132.9175

■ 18.7423, 18.5609,  
18.2644

158.3591,  
161.7580, 167.7458

■ 11.5871, 11.3535,  
10.9686

195.4786,  
200.0767, 208.1814

■ 6.5334, 6.3051,  
5.9318

237.9879,  
244.0141, 254.6430

■ 3.2158, 3.0315,  
2.7355

286.2521,

■ 1.2689, 1.1482,

293.9545, 307.5490

0.9612

340.6367,  
350.2825, 367.3180

■ 0.1597, 0.0188,  
0.0000

■ 0.0000, 0.0000,  
0.0000

■ 56.4701, 56.9821,  
57.8915

■ 56.4701, 56.9821,  
57.8915

■ 50.4362, 48.4215,  
45.0670

■ 63.3487, 66.6843,  
72.6841

■ 45.2098, 40.9531,  
34.1239

■ 71.0981, 77.5602,  
89.5191

■ 40.7577, 34.5353,  
24.9748

■ 79.6036, 89.5917,  
107.7051

■ 37.0427, 29.1206,  
17.5236

■ 81.2509, 92.8863,  
108.2542

■ 34.0245, 24.6581,  
11.6652

■ 31.6588, 21.0923,  
7.2831

■ 29.8960, 18.3618,  
4.2445

■ 28.6792, 16.3975,  
2.3925

■ 27.9253, 15.1126,  
1.4538

# Harmonies

## Analogous

The Analogous color harmony consists of three colors that are next to each other on the color wheel.



56.9201, 56.9821, 61.6277



56.4701, 56.9821, 57.8915



55.4004, 56.9821, 55.3578

# Triad

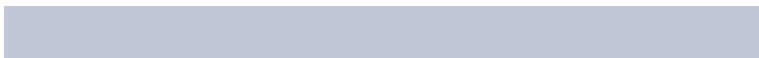
The Triadic color harmony groups three colors that are evenly spaced from another and form a triangle on the color wheel.



56.4701, 56.9821, 57.8915



51.7719, 56.9821, 58.5839



54.3055, 56.9821, 70.1479

# Complementary

The Complementary color scheme is a pair of colors which are on the opposite of each other on the color wheel.



56.4701, 56.9821, 57.8915



56.7949, 62.1026, 71.9450

# Split Complementary

Split-complementary colors differ from the complementary color scheme. The scheme consists of three colors, the original color and two neighbors of the complement color.



52.9378, 56.9821, 69.2476



56.4701, 56.9821, 57.8915



51.4901, 56.9821, 62.4618

# Square

The Square scheme is like the rectangle color scheme, but the four colors are evenly spaced on the color wheel.



56.4701, 56.9821, 57.8915



52.6898, 56.9821, 55.7452



51.9133, 56.9821, 66.3901



55.6568, 56.9821, 68.7999



# Rectangle

The Rectangle color scheme consists of four colors that form a rectangle on the color wheel.



56.4701, 56.9821, 57.8915



54.4885, 56.9821, 54.6312



51.9133, 56.9821, 66.3901



53.8324, 56.9821, 70.0983

# Sweetspot

The Sweet Spot groups the original color and five complimentary colors.



56.4717, 56.9846, 57.8927



91.7867, 95.4053, 101.8565



57.9487, 56.5093, 68.9573



19.4638, 20.1637, 21.4087



0.0000, 0.0000, 0.0000



20.3446, 21.4041, 23.3091

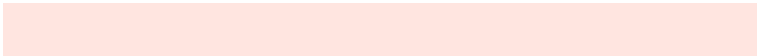


# Same Dimension

The Same Dimension uses a secret algorithm to generate beautiful new colors.



56.4717, 56.9846, 57.8927



82.7065, 82.5788, 82.3860



58.8589, 61.7590, 58.6884



12.5651, 12.7045, 12.9507



17.0977, 9.3126, 0.8964



1.0783, 0.6558, 0.0697

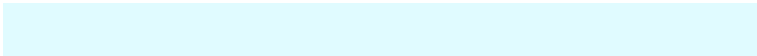


# Inverse Universe

The Inverse Universe completely reimagines the original color for something new.



56.7949, 62.1026, 71.9450



83.2941, 91.8904, 107.9543



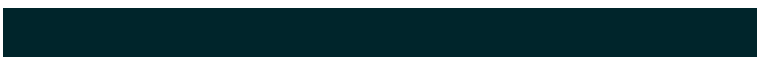
54.3341, 57.1811, 71.1248



12.6337, 13.7909, 15.9336



17.6789, 23.6196, 42.0804

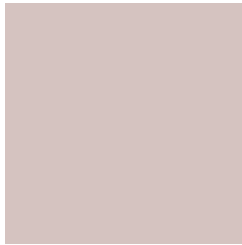


1.1087, 1.5094, 2.5522



# Previews

## White Background



This preview shows how the XYZ color 56.4701, 56.9821, 57.8915 looks on a white background.

## Color Contrast Check

Large Text (above 18pt) WCAG AA × Fail

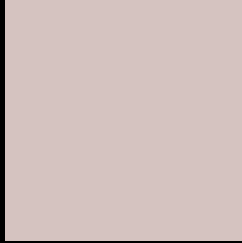
Any Text WCAG AA × Fail

Large Text (above 18pt) WCAG AAA × Fail

Any Text WCAG AAA × Fail



# Black Background



This preview shows how the XYZ color 56.4701, 56.9821, 57.8915 looks on a black background.

## Color Contrast Check

Large Text (above 18pt) WCAG AA ✓ Pass

Any Text WCAG AA ✓ Pass

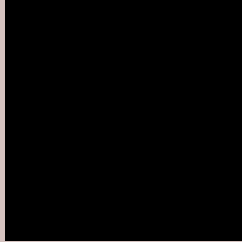
Large Text (above 18pt) WCAG AAA ✓ Pass

Any Text WCAG AAA ✓ Pass

If you want to check with other color combinations, try the [Color Contrast Checker](#).

# XYZ 56.4701, 56.9821, 57.8915

## Background



This preview shows how black text looks on a background with the XYZ color 56.4701, 56.9821, 57.8915.



This preview shows how white text looks on a background with the XYZ color 56.4701, 56.9821,



# Color Blindness Simulation

Color vision deficiency is a very complex topic, and I could not describe the different causes any better than Wikipedia does, so if you want to learn more, you should check out their [article about color blindness](#).

## Dichromacy



### Original Color

56.4701, 56.9821, 57.8915

### Protanopia

54.8335, 57.1206, 59.1743

### Deuteranopia

57.9905, 56.7652, 58.3524



## Tritanopia

58.4795, 57.1411, 67.6216

# Trichromacy



## Original Color

56.4701, 56.9821, 57.8915

## Protanomaly

55.3240, 57.0482, 58.5476

## Deuteranomaly

57.3109, 56.7419, 58.3837

## Tritanomaly

57.6840, 57.1440, 63.8667

# Monochromacy



## Original Color

56.4701, 56.9821, 57.8915

## Achromatopsia

54.8990, 57.7580, 62.8985

## Achromatomaly

55.4490, 57.3985, 60.9799

# CSS Examples

## Text

The CSS property to change the color of the text to XYZ 56.4701, 56.9821, 57.8915 is called "color". The color property can be set on classes, ids or directly on the HTML element.

This example shows how text in the color rgb(213, 195, 192) looks like.

```
.text, #text, p{  
    color:rgb(213, 195, 192)  
}
```

If you want to add a text shadow in that color use the text-shadow property, you can generate a text shadow directly with our [CSS Text Shadow Generator](#).

Here you see how black text with a 4 pixel rgb(213, 195, 192) colored shadow looks like.

```
.shadow{ text-shadow: 4px 4px 2px rgb(213, 195, 192) }
```

## Border

The CSS property to change the border of an element to XYZ 56.4701, 56.9821, 57.8915 is called "border". The border property can be set on classes, ids or directly on the HTML element.

This example shows the color as border, it can be applied via the CSS property "border" or "border-color".

```
.border, #border, table{ border:4px solid rgb(213, 195, 192) }
```



If only the border color should be changed use the property `border-color`.

```
.border{ border-color:rgb(213, 195, 192) }
```

If you want to add a box shadow in that color use:

Here you see how a box with a 4 pixel `rgb(213, 195, 192)` colored shadow looks like.

```
.boxshadow{ -moz-box-shadow:4px 4px 4px  
4px rgb(213, 195, 192); -webkit-box-  
shadow:4px 4px 4px 4px rgb(213, 195, 192);  
box-shadow:4px 4px 4px 4px rgb(213, 195,  
192) }
```

# Background

The CSS property to change the background color of an element to XYZ 56.4701, 56.9821, 57.8915 is called "background". The background property can be set on classes, ids or directly on the HTML element.

```
.background, #background, body{  
background: rgb(213, 195, 192) }
```

If only the background color should be changed can be used:

```
.background{ background-color: rgb(213,  
195, 192) }
```

This example shows the color as background, it is applied via the CSS property "background".

To optimize and compress your CSS code, you can use our [online CSS compressor and optimizer](#) based on csstidy. If you want to create a linear or radial gradient as background or border, check our [CSS Gradient Generator](#).

Hey! You found this booklet interesting? Support Converting Colors with the new Membership Option!

The pro membership hides all ads, plus gives you double the colors in the color bucket, and more awesome pro features!

**[Learn more, Memberships starting at \\$2.50/m!](#)**

**Follow me  
on Twitter!**

@ConvertingColor