

Converting Colors

XYZ(56.5670, 54.6635, 54.8775)

Have a look what the booklet for
XYZ(56.5670, 54.6635, 54.8775)
contains.

XYZ(56.5755, 54.8129, 55.1751)	3
<i>Conversions</i>	4
<i>Details</i>	6
<i>Harmonies</i>	12
<i>Previews</i>	24
<i>Color Blindness Simulation</i>	28
<i>CSS Examples</i>	31

Color

**XYZ(56.5755, 54.8129,
55.1751)**

Conversions

Conversions Part 1

Format	Color
Hex	DCBCBC
RGB	220, 188, 188
RGB Percent	86%, 74%, 74%
CMY	0.1373, 0.2627, 0.2627
CMYK	0.00, 0.15, 0.15, 0.14
HSL	0°, 31%, 80%
HSV	0°, 15%, 86%
XYZ	56.5755, 54.8129, 55.1751
YIQ	197.5680, 19.0720, 6.7840

Conversions

Conversions Part 2

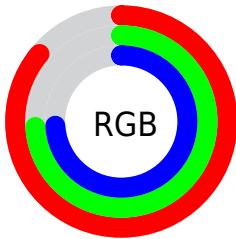
Format	Color
R _Y B	220, 188, 188
Decimal	14466236
CIE Lab	78.93, 11.40, 4.23
CIE LCh	79, 12.161, 20.347
Yxy	54.8129, 0.3397, 0.3291
Android (android.graphics.Color)	4292656316 (0xFFDCBCBC)
YUV	197.5680, -4.7170, 19.6729
Hunter-Lab	74.0357, 6.8409, 7.6392

Details

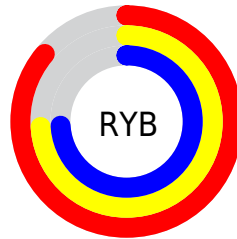
The XYZ color **56.5755, 54.8129, 55.1751** is a light color, and the websafe version is hex **FFCCCC**. A complement of this color would be **59.2501, 67.0436, 77.5285**, and the grayscale version is **53.4352, 56.2180, 61.2214**.

A 20% lighter version of the original color is **89.9198, 92.4930, 98.7016**, and **28.5542, 27.0765, 26.6430** is the 20% darker color. If you saturate the color by 10%, you get **50.0361, 45.2443, 42.1729**, and if you desaturate by 10%, it is **64.1957, 65.9635, 70.3225**.

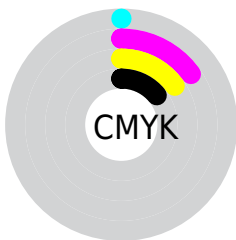
Distribution



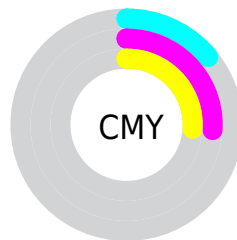
- Red (86%)
- Green (74%)
- Blue (74%)



- Red (86%)
- Yellow (74%)
- Blue (74%)



- Cyan (0%)
- Magenta (15%)
- Yellow (15%)
- Black (14%)





- Cyan (14%)
- Magenta (26%)
- Yellow (26%)

Brightness & Saturation Gradients


These gradients show how the XYZ color 56.5755, 54.8129, 55.1751 changes by changing the brightness by 10 percent. The first figure shows a shift by +10% for each color and the second figure -10%.


Similar to the brightness gradients but the following saturation gradients show a change of the XYZ color 56.5755, 54.8129, 55.1751 by changing the saturation by 10% instead.


 56.5755, 54.8129,
55.1751

 56.5755, 54.8129,
55.1751


401.8967,
405.2023, 423.8760

 40.9033, 39.2519,
39.1424


 98.9805, 97.2668,
99.2712

 28.4309, 26.9558,
26.5618

126.4440,
124.9285, 128.1716

 18.7928, 17.5400,
17.0149


158.5686,
157.3925, 162.1984

 11.6238, 10.6203,
10.0830

195.7198,
195.0434, 201.7700

 6.5584, 5.8121,
5.3477

238.2628,
238.2654, 247.3050

 3.2314, 2.7312,
2.3904

286.5631,

 1.2773, 0.9930,

287.4430, 299.2220

0.7812

340.9859,
342.9605, 357.9395

■ 0.1661, 0.0000,
0.0000

■ 0.0000, 0.0000,
0.0000

■ 56.5755, 54.8129,
55.1751

■ 56.5755, 54.8129,
55.1751

■ 50.0361, 45.2443,
42.1729

■ 64.1957, 65.9635,
70.3225

■ 44.5244, 37.1791,
31.2157

■ 72.9378, 78.7553,
87.7022

■ 39.9895, 30.5432,
22.2005

■ 82.8461, 93.2537,
107.4006

■ 36.3744, 25.2532,
15.0141

■ 83.3254, 93.9558,
108.3513

■ 33.6163, 21.2172,
9.5315

■ 31.6444, 18.3316,
5.6120

■ 30.3769, 16.4766,
3.0927

■ 29.7136, 15.5059,
1.7747

■ 29.5157, 15.2163,
1.3814

Harmonies

Analogous

The Analogous color harmony consists of three colors that are next to each other on the color wheel.



56.8125, 54.8129, 61.9404



56.5755, 54.8129, 55.1751



55.1186, 54.8129, 50.0148

Triad

The Triadic color harmony groups three colors that are evenly spaced from another and form a triangle on the color wheel.



56.5755, 54.8129, 55.1751



48.6031, 54.8129, 51.5892



51.3230, 54.8129, 73.7800

Complementary

The Complementary color scheme is a pair of colors which are on the opposite of each other on the color wheel.



56.5755, 54.8129, 55.1751



59.2501, 67.0436, 77.5285

Split Complementary

Split-complementary colors differ from the complementary color scheme. The scheme consists of three colors, the original color and two neighbors of the complement color.



49.1898, 54.8129, 70.5208



56.5755, 54.8129, 55.1751



47.6518, 54.8129, 57.4790

Square

The Square scheme is like the rectangle color scheme, but the four colors are evenly spaced on the color wheel.



56.5755, 54.8129, 55.1751



50.4996, 54.8129, 48.0582



47.8632, 54.8129, 64.4277



53.7298, 54.8129, 73.0434

Rectangle

The Rectangle color scheme consists of four colors that form a rectangle on the color wheel.



56.5755, 54.8129, 55.1751



53.6759, 54.8129, 48.0105



47.8632, 54.8129, 64.4277



50.5514, 54.8129, 73.1064

Sweetspot

The Sweet Spot groups the original color and five complimentary colors.



56.5770, 54.8154, 55.1763



90.2832, 93.0250, 99.4234



60.4173, 56.3502, 75.4030



19.1386, 19.6394, 20.9114



0.0000, 0.0000, 0.0000



20.3446, 21.4041, 23.3091

Same Dimension

The Same Dimension uses a secret algorithm to generate beautiful new colors.



56.5770, 54.8154, 55.1763



76.5369, 72.9106, 72.0953



60.1858, 62.0329, 56.3792



13.0562, 13.0518, 13.5567



17.3224, 8.9304, 0.8107



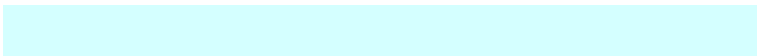
1.1223, 0.5786, 0.0525

Inverse Universe

The Inverse Universe completely reimagines the original color for something new.



59.2501, 67.0436, 77.5285



80.8589, 92.6818, 108.2354



55.2509, 59.0451, 76.1955



13.4448, 14.8293, 16.8059



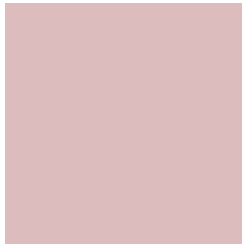
22.5980, 33.0654, 44.9296



1.4641, 2.1422, 2.9108

Previews

White Background



This preview shows how the XYZ color 56.5755, 54.8129, 55.1751 looks on a white background.

Color Contrast Check

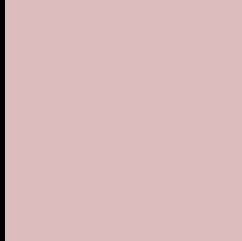
Large Text (above 18pt) WCAG AA × Fail

Any Text WCAG AA × Fail

Large Text (above 18pt) WCAG AAA × Fail

Any Text WCAG AAA × Fail

Black Background



This preview shows how the XYZ color 56.5755, 54.8129, 55.1751 looks on a black background.

Color Contrast Check

Large Text (above 18pt) WCAG AA ✓ Pass

Any Text WCAG AA ✓ Pass

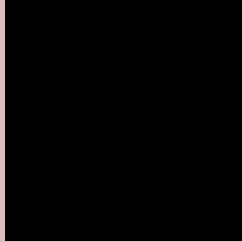
Large Text (above 18pt) WCAG AAA ✓ Pass

Any Text WCAG AAA ✓ Pass

If you want to check with other color combinations, try the [Color Contrast Checker](#).

XYZ 56.5755, 54.8129, 55.1751

Background



This preview shows how black text looks on a background with the XYZ color 56.5755, 54.8129, 55.1751.



This preview shows how white text looks on a background with the XYZ color 56.5755, 54.8129, 55.1751.

Color Blindness Simulation

Color vision deficiency is a very complex topic, and I could not describe the different causes any better than Wikipedia does, so if you want to learn more, you should check out their [article about color blindness](#).

Dichromacy



Original Color

56.5755, 54.8129, 55.1751

Protanopia

52.8490, 55.1153, 57.7221

Deuteranopia

55.8900, 54.7777, 55.2044



Tritanopia

58.2257, 54.8645, 62.7794

Trichromacy



Original Color

56.5755, 54.8129, 55.1751

Protanomaly

53.9857, 54.7263, 57.0081

Deuteranomaly

56.1881, 54.9315, 55.2183

Tritanomaly

57.5529, 54.8983, 59.7876

Monochromacy



Original Color

56.5755, 54.8129, 55.1751

Achromatopsia

53.6758, 56.4712, 61.4971

Achromatomaly

54.4830, 55.6004, 58.8993

CSS Examples

Text

The CSS property to change the color of the text to XYZ 56.5755, 54.8129, 55.1751 is called "color". The color property can be set on classes, ids or directly on the HTML element.

This example shows how text in the color `rgb(220, 188, 188)` looks like.

```
.text, #text, p{  
    color:rgb(220, 188, 188)  
}
```

If you want to add a text shadow in that color use the text-shadow property, you can generate a text shadow directly with our [CSS Text Shadow Generator](#).

Here you see how black text with a 4 pixel rgb(220, 188, 188) colored shadow looks like.

```
.shadow{ text-shadow: 4px 4px 2px rgb(220, 188, 188) }
```

Border

The CSS property to change the border of an element to XYZ 56.5755, 54.8129, 55.1751 is called "border". The border property can be set on classes, ids or directly on the HTML element.

This example shows the color as border, it can be applied via the CSS property "border" or "border-color".

```
.border, #border, table{ border:4px solid rgb(220, 188, 188) }
```


If only the border color should be changed use the property `border-color`.

```
.border{ border-color:rgb(220, 188, 188) }
```

If you want to add a box shadow in that color use:

Here you see how a box with a 4 pixel `rgb(220, 188, 188)` colored shadow looks like.

```
.boxshadow{ -moz-box-shadow:4px 4px 4px 4px rgb(220, 188, 188); -webkit-box-shadow:4px 4px 4px 4px rgb(220, 188, 188); box-shadow:4px 4px 4px 4px rgb(220, 188, 188) }
```

Background

The CSS property to change the background color of an element to XYZ 56.5755, 54.8129, 55.1751 is called "background". The background property can be set on classes, ids or directly on the HTML element.

```
.background, #background, body{  
background: rgb(220, 188, 188) }
```

If only the background color should be changed can be used:

```
.background{ background-color: rgb(220,  
188, 188) }
```

This example shows the color as background, it is applied via the CSS property "background".

To optimize and compress your CSS code, you can use our [online CSS compressor and optimizer](#) based on csstidy. If you want to create a linear or radial gradient as background or border, check our [CSS Gradient Generator](#).

Hey! You found this booklet interesting? Support Converting Colors with the new Membership Option!

The pro membership hides all ads, plus gives you double the colors in the color bucket, and more awesome pro features!

[Learn more, Memberships starting at \\$2.50/m!](#)

**Follow me
on Twitter!**

@ConvertingColor