

Converting Colors

XYZ(56.5687, 53.2118, 51.0031)

Have a look what the booklet for
XYZ(56.5687, 53.2118, 51.0031)
contains.

XYZ(56.6380, 53.3719, 51.0327)	3
<i>Conversions</i>	4
<i>Details</i>	6
<i>Harmonies</i>	12
<i>Previews</i>	24
<i>Color Blindness Simulation</i>	28
<i>CSS Examples</i>	31

Color

**XYZ(56.6380, 53.3719,
51.0327)**

Conversions

Conversions Part 1

Format	Color
Hex	E2B7B5
RGB	226, 183, 181
RGB Percent	89%, 72%, 71%
CMY	0.1137, 0.2823, 0.2902
CMYK	0.00, 0.19, 0.20, 0.11
HSL	3°, 44%, 80%
HSV	3°, 20%, 89%
XYZ	56.6380, 53.3719, 51.0327
YIQ	195.6290, 26.2700, 8.4940

Conversions

Conversions Part 2

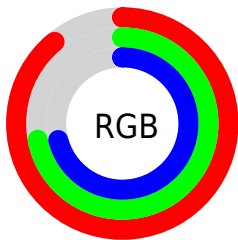
Format	Color
R _Y B	226, 183, 181
Decimal	14858165
CIE Lab	78.09, 15.17, 6.88
CIE LCh	78, 16.660, 24.376
Yxy	53.3719, 0.3517, 0.3314
Android (android.graphics.Color)	4293048245 (0xFFE2B7B5)
YUV	195.6290, -7.2121, 26.6354
Hunter-Lab	73.0561, 10.5371, 9.7227

Details

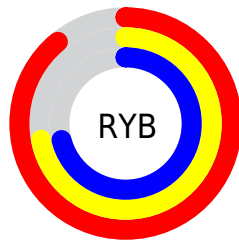
The XYZ color **56.6380, 53.3719, 51.0327** is a light color, and the websafe version is hex **FFCCCC**. A complement of this color would be **59.4386, 68.6243, 82.0650**, and the grayscale version is **52.2792, 55.0017, 59.8969**.

A 20% lighter version of the original color is **87.3926, 89.1074, 92.7141**, and **28.4565, 26.0698, 23.9542** is the 20% darker color. If you saturate the color by 10%, you get **50.3874, 44.2853, 38.4213**, and if you desaturate by 10%, it is **63.9510, 63.9804, 65.8552**.

Distribution



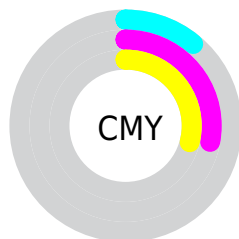
- Red (89%)
- Green (72%)
- Blue (71%)



- Red (89%)
- Yellow (72%)
- Blue (71%)



- Cyan (0%)
- Magenta (19%)
- Yellow (20%)
- Black (11%)



- Cyan (11%)
- Magenta (28%)
- Yellow (29%)

Brightness & Saturation Gradients

These gradients show how the XYZ color 56.6380, 53.3719, 51.0327 changes by changing the brightness by 10 percent. The first figure shows a shift by +10% for each color and the second figure -10%.

Similar to the brightness gradients but the following saturation gradients show a change of the XYZ color 56.6380, 53.3719, 51.0327 by changing the saturation by 10% instead.

■ 56.6380, 53.3719,
51.0327

■ 56.6380, 53.3719,
51.0327

402.1276,
399.7103, 407.5410

■ 40.9537, 38.0997,
35.8577

■ 99.0712, 95.1514,
93.1151

■ 28.4704, 26.0601,
24.0355

126.5508,
122.4275, 120.8596

■ 18.8228, 16.8686,
15.1475

158.6929,
154.4737, 153.6310

■ 11.6456, 10.1409,
8.7752

195.8627,
191.6745, 191.8479

■ 6.5733, 5.4925,
4.5000

238.4258,
234.4141, 235.9288

■ 3.2406, 2.5390,
1.9035

286.7474,

■ 1.2823, 0.8961,

283.0770, 286.2923

0.4949

341.1929,
338.0476, 343.3568

■ 0.1699, 0.0000,
0.0000

■ 0.0000, 0.0000,
0.0000

■ 56.6380, 53.3719,
51.0327

■ 56.6380, 53.3719,
51.0327

■ 50.3874, 44.2853,
38.4213

■ 63.9510, 63.9804,
65.8552

■ 45.1456, 36.6439,
27.9121

■ 72.3681, 76.1683,
82.9842

■ 40.8612, 30.3756,
19.3917

■ 81.9338, 89.9993,
102.5135

■ 37.4761, 25.3988,
12.7348

■ 85.1742, 94.9088,
108.4378

■ 34.9263, 21.6235,
7.8019

■ 33.1391, 18.9483,
4.4341

■ 32.0294, 17.2549,
2.4426

■ 31.4767, 16.3920,
1.5107

■ 31.4735, 16.3874,
1.5042

Harmonies

Analogous

The Analogous color harmony consists of three colors that are next to each other on the color wheel.



57.2072, 53.3719, 59.8851



56.6380, 53.3719, 51.0327



54.4573, 53.3719, 44.7414

Triad

The Triadic color harmony groups three colors that are evenly spaced from another and form a triangle on the color wheel.



56.6380, 53.3719, 51.0327



45.8148, 53.3719, 48.2965



50.1183, 53.3719, 77.8125

Complementary

The Complementary color scheme is a pair of colors which are on the opposite of each other on the color wheel.



56.6380, 53.3719, 51.0327



59.4386, 68.6243, 82.0650

Split Complementary

Split-complementary colors differ from the complementary color scheme. The scheme consists of three colors, the original color and two neighbors of the complement color.



47.1737, 53.3719, 73.9140



56.6380, 53.3719, 51.0327



44.7581, 53.3719, 56.3761

Square

The Square scheme is like the rectangle color scheme, but the four colors are evenly spaced on the color wheel.



56.6380, 53.3719, 51.0327



48.1919, 53.3719, 43.2837



45.2448, 53.3719, 65.8195



53.3524, 53.3719, 75.9927

Rectangle

The Rectangle color scheme consists of four colors that form a rectangle on the color wheel.



56.6380, 53.3719, 51.0327



52.4307, 53.3719, 42.5204



45.2448, 53.3719, 65.8195



49.0634, 53.3719, 77.1156

Sweetspot

The Sweet Spot groups the original color and five complimentary colors.



56.6395, 53.3743, 51.0338



88.1961, 90.0785, 94.9431



61.4109, 54.6261, 78.1847



18.7249, 19.0593, 20.0112



0.0000, 0.0000, 0.0000



20.3446, 21.4041, 23.3091

Same Dimension

The Same Dimension uses a secret algorithm to generate beautiful new colors.



56.6395, 53.3743, 51.0338



70.8139, 64.8635, 59.7089



61.5364, 63.1682, 52.6661



13.7560, 13.7979, 14.2450



17.9782, 9.3944, 0.8657



1.2637, 0.6862, 0.0659

Inverse Universe

The Inverse Universe completely reimagines the original color for something new.



59.4386, 68.6243, 82.0650



75.1434, 88.4561, 107.7210



53.9047, 57.5564, 80.2204



14.0615, 15.4622, 17.6311



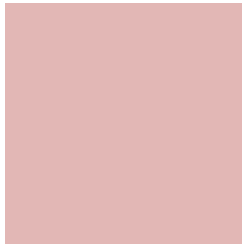
21.8551, 31.1798, 45.9148



1.5313, 2.1940, 3.1880

Previews

White Background



This preview shows how the XYZ color 56.6380, 53.3719, 51.0327 looks on a white background.

Color Contrast Check

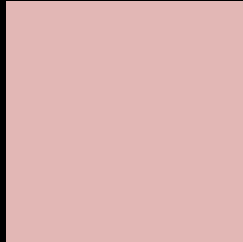
Large Text (above 18pt) WCAG AA × Fail

Any Text WCAG AA × Fail

Large Text (above 18pt) WCAG AAA × Fail

Any Text WCAG AAA × Fail

Black Background



This preview shows how the XYZ color 56.6380, 53.3719, 51.0327 looks on a black background.

Color Contrast Check

Large Text (above 18pt) WCAG AA ✓ Pass

Any Text WCAG AA ✓ Pass

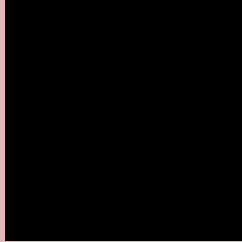
Large Text (above 18pt) WCAG AAA ✓ Pass

Any Text WCAG AAA ✓ Pass

If you want to check with other color combinations, try the [Color Contrast Checker](#).

XYZ 56.6380, 53.3719, 51.0327

Background



This preview shows how black text looks on a background with the XYZ color 56.6380, 53.3719, 51.0327.



This preview shows how white text looks on a background with the XYZ color 56.6380, 53.3719,

51.0327.

Color Blindness Simulation

Color vision deficiency is a very complex topic, and I could not describe the different causes any better than Wikipedia does, so if you want to learn more, you should check out their [article about color blindness](#).

Dichromacy



Original Color

56.6380, 53.3719, 51.0327

Protanopia

51.2216, 53.6909, 54.1181

Deuteranopia

54.6238, 53.5876, 50.6445



Tritanopia

58.3691, 53.4819, 58.8764

Trichromacy



Original Color

56.6380, 53.3719, 51.0327

Protanomaly

52.8617, 53.2658, 52.8426

Deuteranomaly

55.3123, 53.6287, 50.6161

Tritanomaly

57.7008, 53.5045, 56.0014

Monochromacy



Original Color

56.6380, 53.3719, 51.0327

Achromatopsia

52.4687, 55.2011, 60.1140

Achromatomaly

53.7669, 54.2886, 56.9351

CSS Examples

Text

The CSS property to change the color of the text to XYZ 56.6380, 53.3719, 51.0327 is called "color". The color property can be set on classes, ids or directly on the HTML element.

This example shows how text in the color `rgb(226, 183, 181)` looks like.

```
.text, #text, p{  
    color:rgb(226, 183, 181)  
}
```

If you want to add a text shadow in that color use the text-shadow property, you can generate a text shadow directly with our [CSS Text Shadow Generator](#).

Here you see how black text with a 4 pixel rgb(226, 183, 181) colored shadow looks like.

```
.shadow{ text-shadow: 4px 4px 2px rgb(226, 183, 181) }
```

Border

The CSS property to change the border of an element to XYZ 56.6380, 53.3719, 51.0327 is called "border". The border property can be set on classes, ids or directly on the HTML element.

This example shows the color as border, it can be applied via the CSS property "border" or "border-color".

```
.border, #border, table{ border:4px solid rgb(226, 183, 181) }
```


If only the border color should be changed use the property `border-color`.

```
.border{ border-color:rgb(226, 183, 181) }
```

If you want to add a box shadow in that color use:

Here you see how a box with a 4 pixel `rgb(226, 183, 181)` colored shadow looks like.

```
.boxshadow{ -moz-box-shadow:4px 4px 4px  
4px rgb(226, 183, 181); -webkit-box-  
shadow:4px 4px 4px 4px rgb(226, 183, 181);  
box-shadow:4px 4px 4px 4px rgb(226, 183,  
181) }
```

Background

The CSS property to change the background color of an element to XYZ 56.6380, 53.3719, 51.0327 is called "background". The background property can be set on classes, ids or directly on the HTML element.

```
.background, #background, body{  
background: rgb(226, 183, 181) }
```

If only the background color should be changed can be used:

```
.background{ background-color: rgb(226,  
183, 181) }
```

This example shows the color as background, it is applied via the CSS property "background".

To optimize and compress your CSS code, you can use our [online CSS compressor and optimizer](#) based on csstidy. If you want to create a linear or radial gradient as background or border, check our [CSS Gradient Generator](#).

Hey! You found this booklet interesting? Support Converting Colors with the new Membership Option!

The pro membership hides all ads, plus gives you double the colors in the color bucket, and more awesome pro features!

[Learn more, Memberships starting at \\$2.50/m!](#)

**Follow me
on Twitter!**

@ConvertingColor