

Converting Colors

XYZ(56.6190, 55.0914, 51.8606)

Have a look what the booklet for
XYZ(56.6190, 55.0914, 51.8606)
contains.

XYZ(56.7653, 55.3022, 51.9385)	3
<i>Conversions</i>	4
<i>Details</i>	6
<i>Harmonies</i>	12
<i>Previews</i>	24
<i>Color Blindness Simulation</i>	28
<i>CSS Examples</i>	31

Color

**XYZ(56.7653, 55.3022,
51.9385)**

Conversions

Conversions Part 1

Format	Color
Hex	DEBDB6
RGB	222, 189, 182
RGB Percent	87%, 74%, 71%
CMY	0.1294, 0.2588, 0.2863
CMYK	0.00, 0.15, 0.18, 0.13
HSL	11°, 38%, 79%
HSV	11°, 18%, 87%
XYZ	56.7653, 55.3022, 51.9385
YIQ	198.0690, 21.9150, 4.8190

Conversions

Conversions Part 2

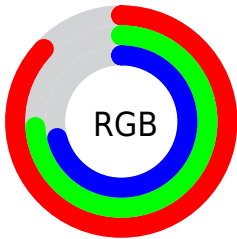
Format	Color
R _Y B	222, 190, 182
Decimal	14597558
CIE Lab	79.22, 10.66, 7.89
CIE LCh	79, 13.263, 36.529
Yxy	55.3022, 0.3461, 0.3372
Android (android.graphics.Color)	4292787638 (0xFFDEBDB6)
YUV	198.0690, -7.9220, 20.9875
Hunter-Lab	74.3654, 6.1147, 10.6463

Details

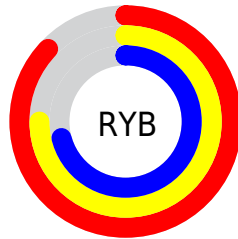
The XYZ color **56.7653, 55.3022, 51.9385** is a light color, and the websafe version is hex **FFCCCC**. A complement of this color would be **56.7762, 63.8183, 78.4334**, and the grayscale version is **53.7570, 56.5566, 61.5901**.

A 20% lighter version of the original color is **89.3250, 92.7379, 94.0812**, and **28.4925, 27.3003, 24.5366** is the 20% darker color. If you saturate the color by 10%, you get **50.9571, 47.0707, 39.5665**, and if you desaturate by 10%, it is **63.4377, 64.6790, 66.3943**.

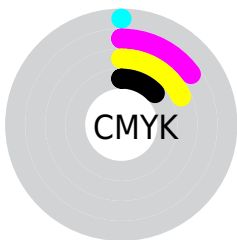
Distribution



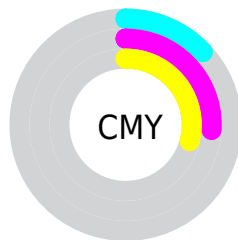
- Red (87%)
- Green (74%)
- Blue (71%)



- Red (87%)
- Yellow (75%)
- Blue (71%)



- Cyan (0%)
- Magenta (15%)
- Yellow (18%)
- Black (13%)



- Cyan (13%)
- Magenta (26%)
- Yellow (29%)

Brightness & Saturation Gradients

These gradients show how the XYZ color 56.7653, 55.3022, 51.9385 changes by changing the brightness by 10 percent. The first figure shows a shift by +10% for each color and the second figure -10%.

Similar to the brightness gradients but the following saturation gradients show a change of the XYZ color 56.7653, 55.3022, 51.9385 by changing the saturation by 10% instead.

■ 56.7653, 55.3022,
51.9385

■ 56.7653, 55.3022,
51.9385

402.5977,
407.0564, 411.1493

■ 41.0562, 39.6437,
36.5742

■ 99.2560, 97.9836,
94.4662

■ 28.5509, 27.2609,
24.5848

126.7683,
125.7753, 122.4666

■ 18.8839, 17.7692,
15.5518

158.9458,
158.3802, 155.5161

■ 11.6899, 10.7844,
9.0566

196.1538,
196.1827, 194.0333

■ 6.6036, 5.9221,
4.6808

238.7576,
239.5671, 238.4367

■ 3.2596, 2.7978,
2.0058

287.1226,

■ 1.2925, 1.0271,

288.9180, 289.1448

0.5588

341.6142,
344.6196, 346.5762

■ 0.1776, 0.0000,
0.0000

■ 0.0000, 0.0000,
0.0000

■ 56.7653, 55.3022,
51.9385

■ 56.7653, 55.3022,
51.9385

■ 50.9571, 47.0707,
39.5665

■ 63.4377, 64.6790,
66.3943

■ 45.9730, 39.9332,
29.1785

■ 71.0031, 75.2349,
83.0202

■ 41.7765, 33.8456,
20.6719

■ 79.4949, 87.0119,
101.9022

■ 38.3262, 28.7579,
13.9335

■ 83.9344, 94.2697,
108.3798

■ 35.5774, 24.6159,
8.8376

■ 33.4799, 21.3604,
5.2421

■ 31.9766, 18.9249,
2.9804

■ 30.9945, 17.2312,
1.8187

■ 30.8458, 16.9724,
1.6503

Harmonies

Analogous

The Analogous color harmony consists of three colors that are next to each other on the color wheel.



57.7904, 55.3022, 58.5703



56.7653, 55.3022, 51.9385



54.6190, 55.3022, 47.7951

Triad

The Triadic color harmony groups three colors that are evenly spaced from another and form a triangle on the color wheel.



56.7653, 55.3022, 51.9385



48.0258, 55.3022, 54.5869



53.1447, 55.3022, 75.9098

Complementary

The Complementary color scheme is a pair of colors which are on the opposite of each other on the color wheel.



56.7653, 55.3022, 51.9385



56.7762, 63.8183, 78.4334

Split Complementary

Split-complementary colors differ from the complementary color scheme. The scheme consists of three colors, the original color and two neighbors of the complement color.



50.5594, 55.3022, 74.6185



56.7653, 55.3022, 51.9385



47.6609, 55.3022, 61.8896

Square

The Square scheme is like the rectangle color scheme, but the four colors are evenly spaced on the color wheel.



56.7653, 55.3022, 51.9385



49.5877, 55.3022, 49.2319



48.5735, 55.3022, 69.3264



55.6552, 55.3022, 72.7202

Rectangle

The Rectangle color scheme consists of four colors that form a rectangle on the color wheel.



56.7653, 55.3022, 51.9385



52.8722, 55.3022, 46.7900



48.5735, 55.3022, 69.3264



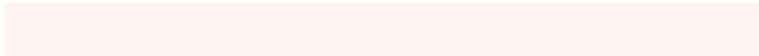
52.2552, 55.3022, 75.9891

Sweetspot

The Sweet Spot groups the original color and five complimentary colors.



56.7668, 55.3047, 51.9397



89.8007, 92.6780, 97.3570



59.1614, 53.9097, 71.8028



19.0686, 19.6238, 20.5044



0.0000, 0.0000, 0.0000



20.3446, 21.4041, 23.3091

Same Dimension

The Same Dimension uses a secret algorithm to generate beautiful new colors.



56.7668, 55.3047, 51.9397



74.2698, 70.8442, 63.7318



61.2870, 64.3451, 53.4464



13.9003, 14.0866, 14.2931



18.3782, 10.1943, 0.9991



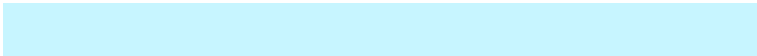
1.3323, 0.8235, 0.0887

Inverse Universe

The Inverse Universe completely reimagines the original color for something new.



56.7762, 63.8183, 78.4334



74.2825, 84.7602, 107.0530



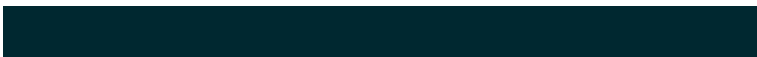
52.0668, 54.3995, 76.8636



13.9017, 15.1426, 17.5778



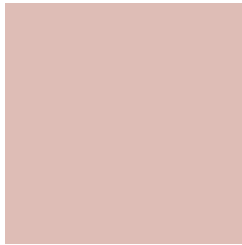
17.9784, 23.4263, 44.6225



1.3005, 1.7324, 3.1111

Previews

White Background



This preview shows how the XYZ color 56.7653, 55.3022, 51.9385 looks on a white background.

Color Contrast Check

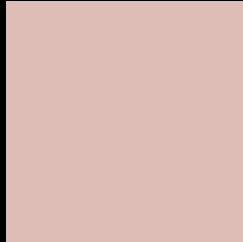
Large Text (above 18pt) WCAG AA × Fail

Any Text WCAG AA × Fail

Large Text (above 18pt) WCAG AAA × Fail

Any Text WCAG AAA × Fail

Black Background



This preview shows how the XYZ color 56.7653, 55.3022, 51.9385 looks on a black background.

Color Contrast Check

Large Text (above 18pt) WCAG AA ✓ Pass

Any Text WCAG AA ✓ Pass

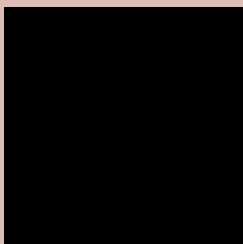
Large Text (above 18pt) WCAG AAA ✓ Pass

Any Text WCAG AAA ✓ Pass

If you want to check with other color combinations, try the [Color Contrast Checker](#).

XYZ 56.7653, 55.3022, 51.9385

Background



This preview shows how black text looks on a background with the XYZ color 56.7653, 55.3022, 51.9385.



This preview shows how white text looks on a background with the XYZ color 56.7653, 55.3022,

51.9385.

Color Blindness Simulation

Color vision deficiency is a very complex topic, and I could not describe the different causes any better than Wikipedia does, so if you want to learn more, you should check out their [article about color blindness](#).

Dichromacy



Original Color

56.7653, 55.3022, 51.9385

Protanopia

52.9600, 55.5816, 54.3914

Deuteranopia

56.6757, 55.5765, 51.9962



Tritanopia

58.8420, 55.1822, 62.8083

Trichromacy



Original Color

56.7653, 55.3022, 51.9385

Protanomaly

54.1214, 55.1980, 53.7007

Deuteranomaly

56.6757, 55.5765, 51.9962

Tritanomaly

57.9394, 55.1237, 58.6251

Monochromacy



Original Color

56.7653, 55.3022, 51.9385

Achromatopsia

53.6758, 56.4712, 61.4971

Achromatomaly

54.7617, 56.1014, 57.8116

CSS Examples

Text

The CSS property to change the color of the text to XYZ 56.7653, 55.3022, 51.9385 is called "color". The color property can be set on classes, ids or directly on the HTML element.

This example shows how text in the color `rgb(222, 189, 182)` looks like.

```
.text, #text, p{  
    color:rgb(222, 189, 182)  
}
```

If you want to add a text shadow in that color use the text-shadow property, you can generate a text shadow directly with our [CSS Text Shadow Generator](#).

Here you see how black text with a 4 pixel rgb(222, 189, 182) colored shadow looks like.

```
.shadow{ text-shadow: 4px 4px 2px rgb(222, 189, 182) }
```

Border

The CSS property to change the border of an element to XYZ 56.7653, 55.3022, 51.9385 is called "border". The border property can be set on classes, ids or directly on the HTML element.

This example shows the color as border, it can be applied via the CSS property "border" or "border-color".

```
.border, #border, table{ border:4px solid rgb(222, 189, 182) }
```


If only the border color should be changed use the property `border-color`.

```
.border{ border-color:rgb(222, 189, 182) }
```

If you want to add a box shadow in that color use:

Here you see how a box with a 4 pixel `rgb(222, 189, 182)` colored shadow looks like.

```
.boxshadow{ -moz-box-shadow:4px 4px 4px 4px rgb(222, 189, 182); -webkit-box-shadow:4px 4px 4px 4px rgb(222, 189, 182); box-shadow:4px 4px 4px 4px rgb(222, 189, 182) }
```

Background

The CSS property to change the background color of an element to XYZ 56.7653, 55.3022, 51.9385 is called "background". The background property can be set on classes, ids or directly on the HTML element.

```
.background, #background, body{  
background: rgb(222, 189, 182) }
```

If only the background color should be changed can be used:

```
.background{ background-color: rgb(222,  
189, 182) }
```

This example shows the color as background, it is applied via the CSS property "background".

To optimize and compress your CSS code, you can use our [online CSS compressor and optimizer](#) based on csstidy. If you want to create a linear or radial gradient as background or border, check our [CSS Gradient Generator](#).

Hey! You found this booklet interesting? Support Converting Colors with the new Membership Option!

The pro membership hides all ads, plus gives you double the colors in the color bucket, and more awesome pro features!

[Learn more, Memberships starting at \\$2.50/m!](#)

**Follow me
on Twitter!**

@ConvertingColor