

Converting Colors

XYZ(56.6436, 56.6813, 63.2750)

Have a look what the booklet for
XYZ(56.6436, 56.6813, 63.2750)
contains.

XYZ(56.6984, 56.6495, 63.2045)	3
<i>Conversions</i>	4
<i>Details</i>	6
<i>Harmonies</i>	12
<i>Previews</i>	24
<i>Color Blindness Simulation</i>	28
<i>CSS Examples</i>	31

Color

**XYZ(56.6984, 56.6495,
63.2045)**

Conversions

Conversions Part 1

Format	Color
Hex	D3C2C9
RGB	211, 194, 201
RGB Percent	83%, 76%, 79%
CMY	0.1725, 0.2392, 0.2118
CMYK	0.00, 0.08, 0.05, 0.17
HSL	335°, 16%, 79%
HSV	335°, 8%, 83%
XYZ	56.6984, 56.6495, 63.2045
YIQ	199.8810, 7.8850, 5.7810

Conversions

Conversions Part 2

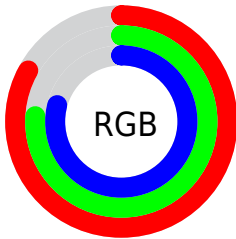
Format	Color
R _Y B	211, 194, 201
Decimal	13877961
CIE Lab	79.98, 7.19, -1.35
CIE LCh	80, 7.312, 349.354
Yxy	56.6495, 0.3211, 0.3209
Android (android.graphics.Color)	4292068041 (0xFFD3C2C9)
YUV	199.8810, 0.5517, 9.7514
Hunter-Lab	75.2659, 2.7503, 2.8973

Details

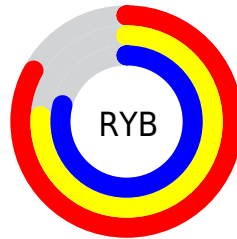
The XYZ color **56.6984, 56.6495, 63.2045** is a light color, and the websafe version is hex **CCCCCC**. A complement of this color would be **56.4437, 62.4190, 66.2030**, and the grayscale version is **54.8212, 57.6761, 62.8093**.

A 20% lighter version of the original color is **93.4756, 96.8512, 108.3752**, and **28.3548, 27.9307, 31.5005** is the 20% darker color. If you saturate the color by 10%, you get **50.9302, 47.3559, 54.3657**, and if you desaturate by 10%, it is **63.2546, 67.3287, 72.8897**.

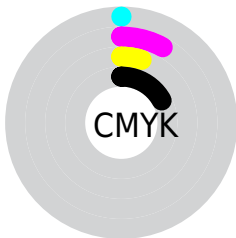
Distribution



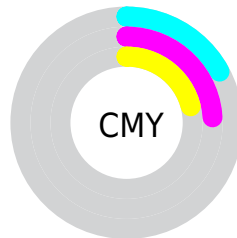
- Red (83%)
- Green (76%)
- Blue (79%)



- Red (83%)
- Yellow (76%)
- Blue (79%)



- Cyan (0%)
- Magenta (8%)
- Yellow (5%)
- Black (17%)



- Cyan (17%)
- Magenta (24%)
- Yellow (21%)

Brightness & Saturation Gradients

These gradients show how the XYZ color 56.6984, 56.6495, 63.2045 changes by changing the brightness by 10 percent. The first figure shows a shift by +10% for each color and the second figure -10%.

Similar to the brightness gradients but the following saturation gradients show a change of the XYZ color 56.6984, 56.6495, 63.2045 by changing the saturation by 10% instead.

■ 56.6984, 56.6495,
63.2045

■ 56.6984, 56.6495,
63.2045

402.3507,
412.1346, 454.4396

■ 41.0023, 40.7239,
45.5646

■ 99.1589, 99.9536,
111.0529

■ 28.5086, 28.1034,
31.5562

126.6540,
128.1009, 142.0985

■ 18.8518, 18.4036,
20.7607

158.8129,
161.0908, 178.4498

■ 11.6666, 11.2402,
12.7597

196.0008,
199.3078, 220.5252

■ 6.5877, 6.2286,
7.1345

238.5832,
243.1364, 268.7434

■ 3.2496, 2.9846,
3.4666

286.9254,

■ 1.2871, 1.1237,

292.9607, 323.5228

1.3376

341.3928,
349.1654, 385.2820

■ 0.1735, 0.0000,
0.0923

■ 0.0000, 0.0000,
0.0000

■ 56.6984, 56.6495,
63.2045

■ 56.6984, 56.6495,
63.2045

■ 50.9302, 47.3559,
54.3657

■ 63.2546, 67.3287,
72.8897

■ 45.9145, 39.3836,
46.3458

■ 70.6231, 79.4399,
83.4406

■ 41.6200, 32.6740,
39.1207

■ 78.0929, 91.5565,
94.6337

■ 38.0116, 27.1613,
32.6640

■ 79.9832, 92.3126,
104.5877

■ 35.0507, 22.7736,
26.9475

■ 80.6743, 92.5891,
108.2272

■ 32.6948, 19.4313,
21.9408

■ 30.8963, 17.0441,
17.6111

■ 29.5991, 15.5062,
13.9219

■ 28.7235, 14.6640,
10.8277

Harmonies

Analogous

The Analogous color harmony consists of three colors that are next to each other on the color wheel.



56.0390, 56.6495, 67.1622



56.6984, 56.6495, 63.2045



56.5824, 56.6495, 59.0116

Triad

The Triadic color harmony groups three colors that are evenly spaced from another and form a triangle on the color wheel.



56.6984, 56.6495, 63.2045



52.9031, 56.6495, 54.2847



52.0054, 56.6495, 68.0956

Complementary

The Complementary color scheme is a pair of colors which are on the opposite of each other on the color wheel.



56.6984, 56.6495, 63.2045



56.4437, 62.4190, 66.2030

Split Complementary

Split-complementary colors differ from the complementary color scheme. The scheme consists of three colors, the original color and two neighbors of the complement color.



51.1948, 56.6495, 64.4312



56.6984, 56.6495, 63.2045



51.7064, 56.6495, 56.5077

Square

The Square scheme is like the rectangle color scheme, but the four colors are evenly spaced on the color wheel.



56.6984, 56.6495, 63.2045



54.3728, 56.6495, 53.9901



51.0864, 56.6495, 60.1835



53.3180, 56.6495, 70.0711

Rectangle

The Rectangle color scheme consists of four colors that form a rectangle on the color wheel.



56.6984, 56.6495, 63.2045



56.0815, 56.6495, 56.6410



51.0864, 56.6495, 60.1835



51.6662, 56.6495, 67.0129

Sweetspot

The Sweet Spot groups the original color and five complimentary colors.



56.7000, 56.6520, 63.2057



92.9651, 96.5973, 105.8403



55.9307, 56.1150, 69.5123



19.9202, 20.7114, 22.6864



0.0000, 0.0000, 0.0000



20.3446, 21.4041, 23.3091

Same Dimension

The Same Dimension uses a secret algorithm to generate beautiful new colors.



56.7000, 56.6520, 63.2057



85.1256, 83.8668, 94.1370



56.2121, 56.9636, 59.0742



12.0076, 11.8878, 13.3159



17.2953, 8.7910, 6.4611



1.0061, 0.5071, 0.5668

Inverse Universe

The Inverse Universe completely reimagines the original color for something new.



56.7000, 56.6520, 63.2057



85.1256, 83.8668, 94.1370



56.9517, 62.0617, 70.6063



12.0076, 11.8878, 13.3159



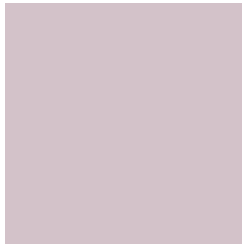
17.2953, 8.7910, 6.4611



1.0061, 0.5071, 0.5668

Previews

White Background



This preview shows how the XYZ color 56.6984, 56.6495, 63.2045 looks on a white background.

Color Contrast Check

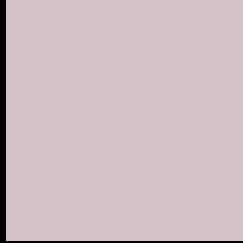
Large Text (above 18pt) WCAG AA × Fail

Any Text WCAG AA × Fail

Large Text (above 18pt) WCAG AAA × Fail

Any Text WCAG AAA × Fail

Black Background



This preview shows how the XYZ color 56.6984, 56.6495, 63.2045 looks on a black background.

Color Contrast Check

Large Text (above 18pt) WCAG AA ✓ Pass

Any Text WCAG AA ✓ Pass

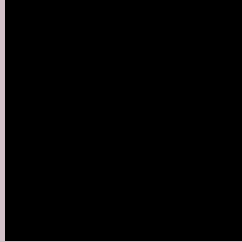
Large Text (above 18pt) WCAG AAA ✓ Pass

Any Text WCAG AAA ✓ Pass

If you want to check with other color combinations, try the [Color Contrast Checker](#).

XYZ 56.6984, 56.6495, 63.2045

Background



This preview shows how black text looks on a background with the XYZ color 56.6984, 56.6495, 63.2045.



This preview shows how white text looks on a background with the XYZ color 56.6984, 56.6495,

Color Blindness Simulation

Color vision deficiency is a very complex topic, and I could not describe the different causes any better than Wikipedia does, so if you want to learn more, you should check out their [article about color blindness](#).

Dichromacy



Original Color

56.6984, 56.6495, 63.2045

Protanopia

54.5652, 56.5237, 64.5342

Deuteranopia

57.7112, 56.5152, 63.1252



Tritanopia

57.6065, 56.6910, 67.5808

Trichromacy



Original Color

56.6984, 56.6495, 63.2045

Protanomaly

55.3024, 56.5815, 63.8837

Deuteranomaly

57.3441, 56.6531, 63.1711

Tritanomaly

57.2408, 56.5448, 65.6549

Monochromacy



Original Color

56.6984, 56.6495, 63.2045

Achromatopsia

54.8990, 57.7580, 62.8985

Achromatomaly

55.5212, 57.3957, 62.7958

CSS Examples

Text

The CSS property to change the color of the text to XYZ 56.6984, 56.6495, 63.2045 is called "color". The color property can be set on classes, ids or directly on the HTML element.

This example shows how text in the color `rgb(211, 194, 201)` looks like.

```
.text, #text, p{  
    color:rgb(211, 194, 201)  
}
```

If you want to add a text shadow in that color use the text-shadow property, you can generate a text shadow directly with our [CSS Text Shadow Generator](#).

Here you see how black text with a 4 pixel rgb(211, 194, 201) colored shadow looks like.

```
.shadow{ text-shadow: 4px 4px 2px rgb(211, 194, 201) }
```

Border

The CSS property to change the border of an element to XYZ 56.6984, 56.6495, 63.2045 is called "border". The border property can be set on classes, ids or directly on the HTML element.

This example shows the color as border, it can be applied via the CSS property "border" or "border-color".

```
.border, #border, table{ border:4px solid rgb(211, 194, 201) }
```


If only the border color should be changed use the property `border-color`.

```
.border{ border-color:rgb(211, 194, 201) }
```

If you want to add a box shadow in that color use:

Here you see how a box with a 4 pixel `rgb(211, 194, 201)` colored shadow looks like.

```
.boxshadow{ -moz-box-shadow:4px 4px 4px  
4px rgb(211, 194, 201); -webkit-box-  
shadow:4px 4px 4px 4px rgb(211, 194, 201);  
box-shadow:4px 4px 4px 4px rgb(211, 194,  
201) }
```

Background

The CSS property to change the background color of an element to XYZ 56.6984, 56.6495, 63.2045 is called "background". The background property can be set on classes, ids or directly on the HTML element.

```
.background, #background, body{  
background: rgb(211, 194, 201) }
```

If only the background color should be changed can be used:

```
.background{ background-color: rgb(211,  
194, 201) }
```

This example shows the color as background, it is applied via the CSS property "background".

To optimize and compress your CSS code, you can use our [online CSS compressor and optimizer](#) based on csstidy. If you want to create a linear or radial gradient as background or border, check our [CSS Gradient Generator](#).

Hey! You found this booklet interesting? Support Converting Colors with the new Membership Option!

The pro membership hides all ads, plus gives you double the colors in the color bucket, and more awesome pro features!

[Learn more, Memberships starting at \\$2.50/m!](#)

**Follow me
on Twitter!**

@ConvertingColor